



S St Thomas

The Art of Sophistication

“Art is not a thing; it is a way of life.”

– Elbert Hubbard



At 8 St Thomas, sophistication and elegance sit in perfect harmony. Artful geometric lines and forms dance in rhythm on the facades of magnificent twin towers, accentuating a quality home with exquisite style.

Symphonic bliss



Artist's Impression



Live fabulously with boundless options
right before you. Be in the heart of
Orchard Road and reach Marina Bay
Financial Centre and prestigious
schools within minutes.

Seamless connectivity



Marina Bay Sands & Marina Bay Financial Centre



Orchard Road



Actual Photo

Soak in the breathtaking views of marmalade sunrises and sunsets that greet you from beyond the skylines of Marina Bay Sands and Orchard every day.



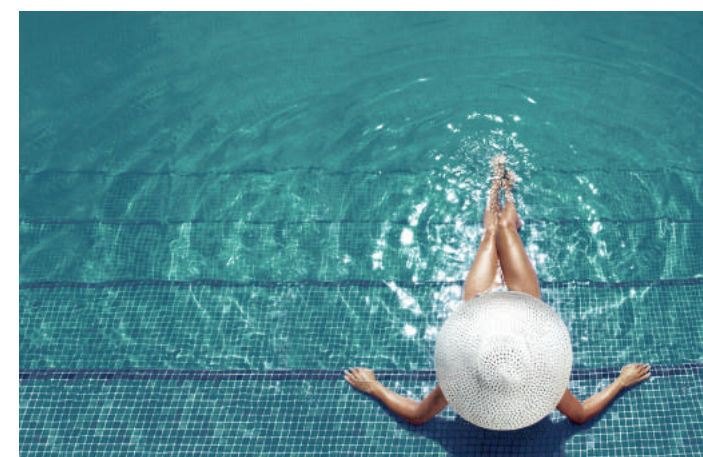


Sensuous aura

Come dive into the embrace of cerulean blue waters or nestle in nature's comforting canopies and retreat into tranquility.



Actual Photo



Waltz with the
world at your feet



Spacious
abode

Open the door to a luxury of space and unbounded beauty at every turn. Look closer for the finer touches that truly redefine the ideals of stylish living.

Soothe your soul in a resplendent eco-paradise, artfully constructed with the environment in mind. 8 St Thomas is awarded BCA Green Mark Gold.

Sustainable living



- Energy Efficiency**
- Energy efficient fridges
 - Common areas are naturally lit in the day and use motion-activated lighting at night



- Water Efficiency**
- Water efficient fittings and washing machines
 - Rainwater is collected, filtered, and used for landscape irrigation



- Other Green Features**
- Green lots available for charging of electric cars
 - Designated bicycle lots available

Sky Terraces

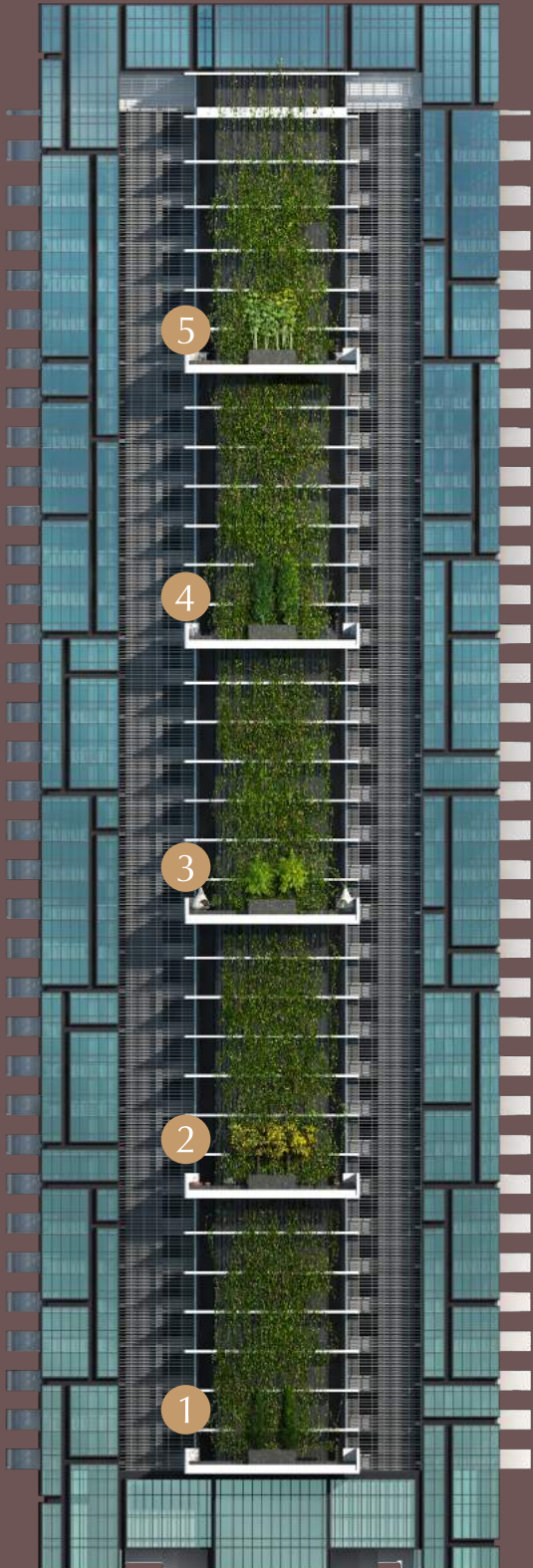
Bask in the allure of nature at themed garden sanctuaries at Block 8; or continue your social activities at Block 10, come rain or shine.

8 ST THOMAS WALK Sky Gardens

- | | |
|-----------------------|-----------------------|
| 1 Level 2
Gusto | 4 Level 23
Toccare |
| 2 Level 9
Colore | 5 Level 30
Suona |
| 3 Level 16
Profumo | |

10 ST THOMAS WALK Fitness & Chillout Pods

- | |
|---|
| 6 Level 13
Game Lounge, Children's
Discovery Deck |
| 7 Level 21
Serenity Deck, Yoga and Fitness Deck |
| 8 Level 29
Cocktail Lounge, Gourmet Dining |



Artist's Impression

Social spaces

Extend your bespoke lifestyle beyond home in recreational spaces designed for every need.



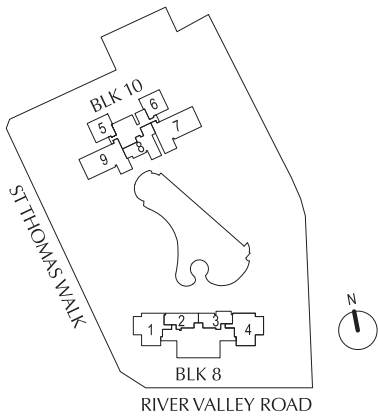
Legend

- | | | | |
|---|--------------------------|---|---------------------------|
| a | Concierge Reception | m | Fitness Corner |
| b | Arrival Plaza | n | Tennis Court |
| c | Sunshine Deck | o | Guardhouse |
| d | Water Feature | p | Pedestrian Side Gate |
| e | Lap Pool | q | Function Room |
| f | Lounge Pool | r | Gymnasium |
| g | Spa Alcove | s | Steam Room |
| h | Kids Splash | t | Garden Trail (Upper Deck) |
| i | Continental Water Deck | u | Accessible Toilet |
| j | Sanctuary Pool | # | Substation & Gen Set |
| k | Garden Barbeque Pavilion | ◇ | Bin Centre |
| l | Children's Funplay | | |

Schematic Diagram

Legend

- 1 BEDROOM
- 2 BEDROOM
- 3 BEDROOM
- 4 BEDROOM
- 4 BEDROOM DUAL KEY
- PENTHOUSE



8 St Thomas Walk Singapore 238146

	01	02	03	04
35	PH1 #35-01			PH2 #35-03
34	D1A			D2A
33	D1B			D2B
32	D1B			D2B
31	D1B			D2B
30	D1B	SKY TERRACE		D2B
29	D1B			D2B
28	D1B			D2B
27	B6	B5		DK1
26	B6	B5		DK1
25	B6	B5		DK1
24	B6	B5		DK1
23	B6	B5	SKY TERRACE	DK1
22	B6	B5		DK1
21	B6	B5		DK1
20	B6	B5		DK1
19	B6	B5		DK1
18	B6	B5		DK1
17	B6	B5		DK1
16	B6	B5	SKY TERRACE	DK1
15	B6	B5		DK1
14	C2	A4		DK1
13	C2	A4		DK1
12	C2	A4		DK1
11	C2	A4		DK1
10	C2	A4		DK1
09	C2	A4	SKY TERRACE	DK1
08	C2	A4		DK1
07	C2	A4		A5C3
06	C2	A4		A5C3
05	C2	A4		A5C3
04	B3	A2		A3B4
03	B3	A2		A3B4
02	B3	A2	SKY TERRACE	A3B4
LIFT LOBBY				
BASEMENT CARPARK				

10 St Thomas Walk Singapore 238102

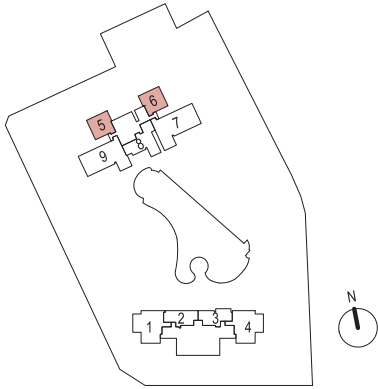
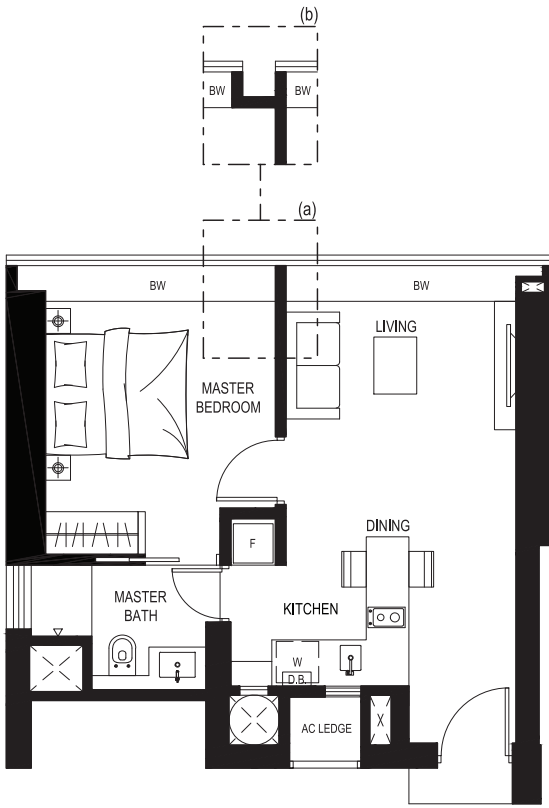
05	09	08	07	06	
B1	C1	B2	C1	B1	35
B1	C1	B2	C1	B1	34
B1	C1	B2	C1	B1	33
B1	C1	B2	C1	B1	32
	C1	B2	C1		31
	C1	B2	C1		30
SKY TERRACE	C1	B2	C1	SKY TERRACE	29
B1	C1	B2	C1	B1	28
B1	C1	B2	C1	B1	27
B1	C1	B2	C1	B1	26
B1	C1	B2	C1	B1	25
B1	C1	B2	C1	B1	24
	C1	B2	C1		23
	C1	B2	C1		22
SKY TERRACE	C1	B2	C1	SKY TERRACE	21
B1	C1	B2	C1	B1	20
B1	C1	B2	C1	B1	19
B1	C1	B2	C1	B1	18
B1	C1	B2	C1	B1	17
B1	C1	B2	C1	B1	16
	C1	B2	C1		15
	C1	B2	C1		14
SKY TERRACE	C1	B2	C1	SKY TERRACE	13
A1	C1	B2	C1	A1	12
A1	C1	B2	C1	A1	11
A1	C1	B2	C1	A1	10
A1	C1	B2	C1	A1	09
A1	C1	B2	C1	A1	08
A1	C1	B2	C1	A1	07
A1	C1	B2	C1	A1	06
A1	C1	B2	C1	A1	05
A1	C1	B2	C1	A1	04
A1	C1	B2	C1	A1	03
	C1	B2	C1		02
LIFT LOBBY					
BASEMENT CARPARK					

1-Bedroom



Type A1

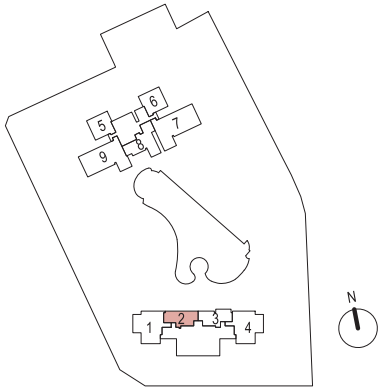
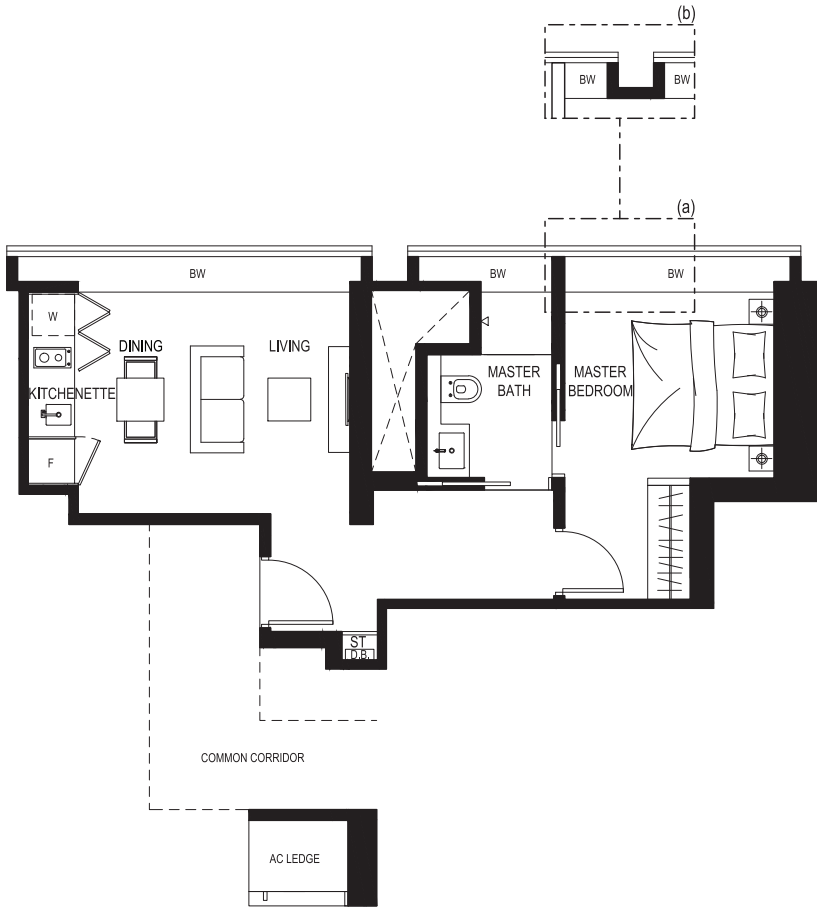
47 sq m / 506 sq ft
#03-05 to #12-05
#03-06* to #12-06*



(a) Applicable to: #03-05 to #07-05, #08-06* to #12-06* (b) Applicable to: #08-05 to #12-05, #03-06* to #07-06*
Note : - handed/ mirrored units not shown *represent mirrored unit
Area includes A/C ledge, balcony and void (where applicable). Plans are approximate measurements and are subject to amendments as may be required or approved by relevant authorities.

Type A2

47 sq m / 506 sq ft
#02-02 to #04-02



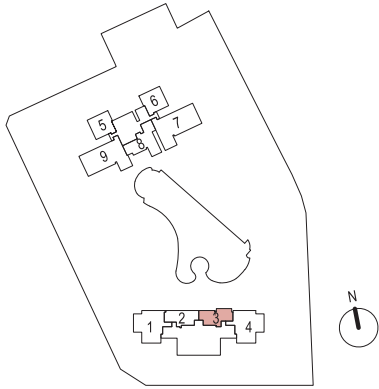
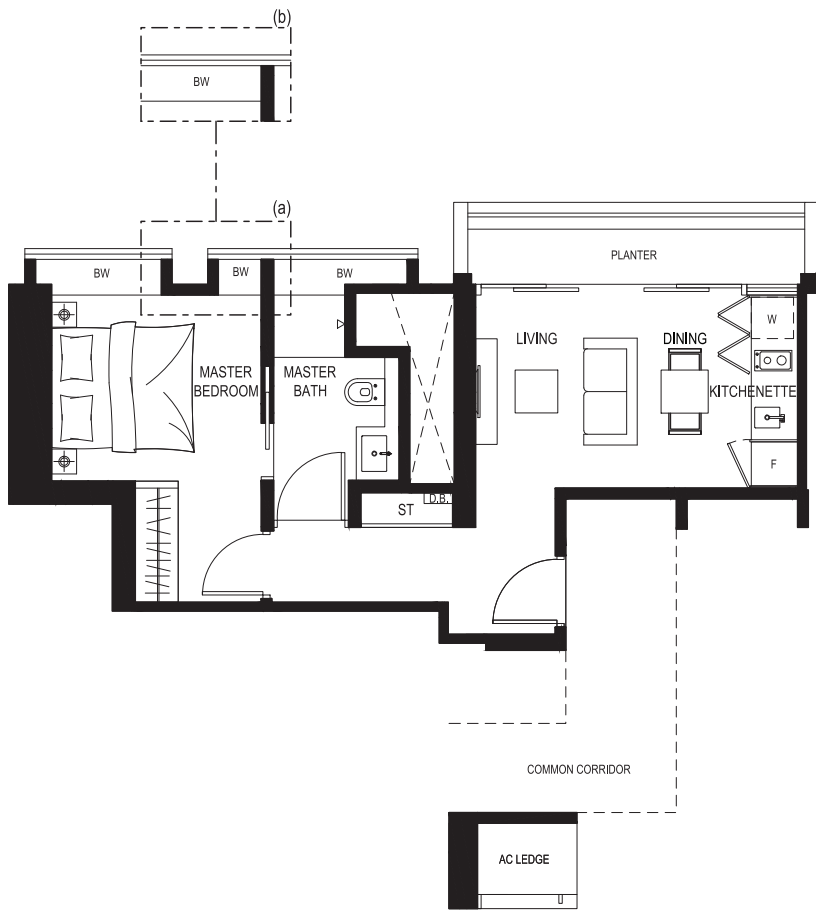
(a) Applicable to: #02-02 to #03-02 (b) Applicable to: #04-02
Area includes A/C ledge, balcony and void (where applicable). Plans are approximate measurements and are subject to amendments as may be required or approved by relevant authorities.

1-Bedroom



Type A3

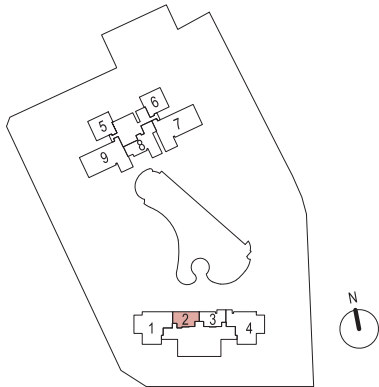
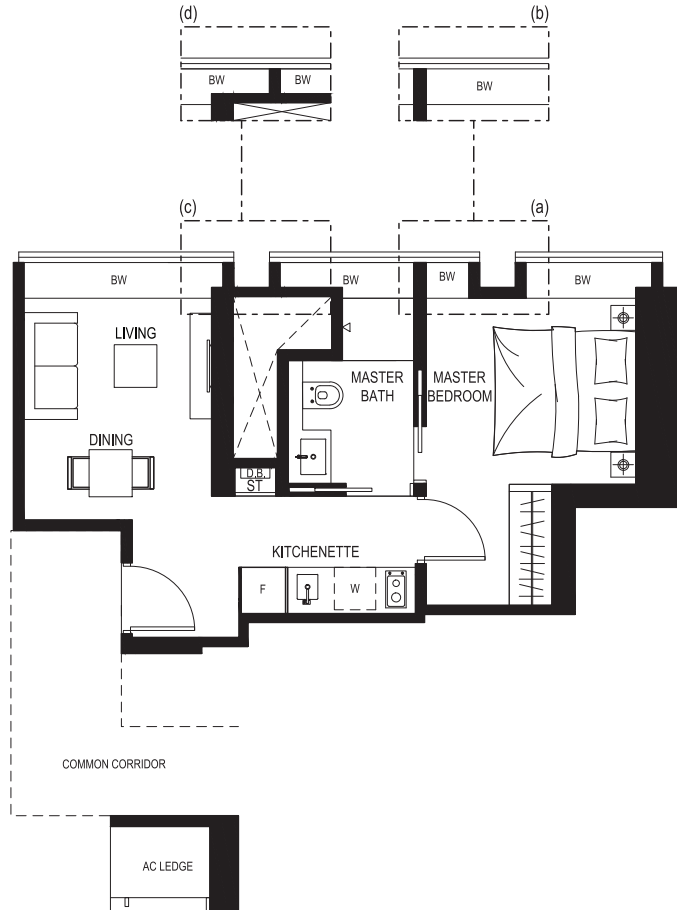
48 sq m / 517 sq ft
#02-03 to #04-03



(a) Applicable to: #02-03 to #03-03 (b) Applicable to: #04-03
Area includes A/C ledge, balcony and void (where applicable). Plans are approximate measurements and are subject to amendments as may be required or approved by relevant authorities.

Type A4

41 sq m / 441 sq ft
#05-02 to #14-02

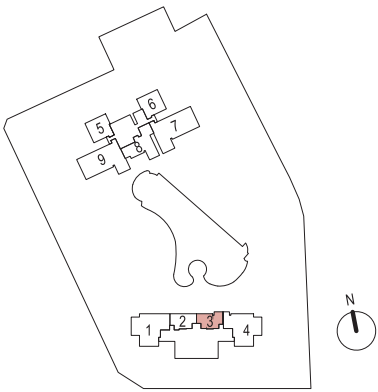
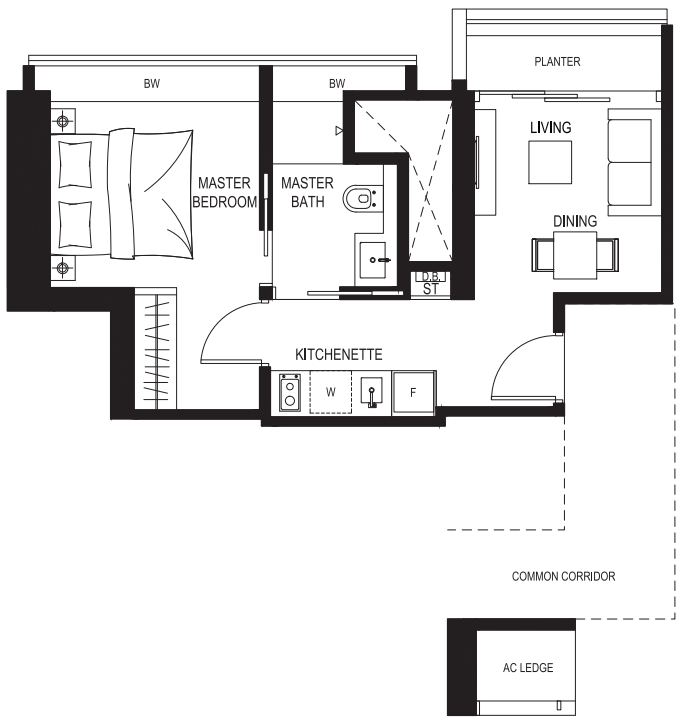


(a) Applicable to: #05-02 to #08-02 (b) Applicable to: #09-02 to #14-02
(c) Applicable to: #05-02 to #08-02, #14-02 (d) Applicable to: #09-02 to #13-02
Area includes A/C ledge, balcony and void (where applicable). Plans are approximate measurements and are subject to amendments as may be required or approved by relevant authorities.

1-Bedroom



Type A5
41 sq m / 441 sq ft
#05-03 to #07-03



Area includes A/C ledge, balcony and void (where applicable). Plans are approximate measurements and are subject to amendments as may be required or approved by relevant authorities.



Actual Photo

2-Bedroom

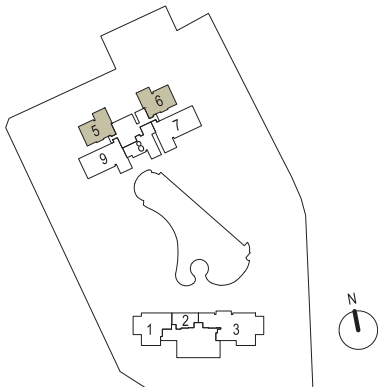


Type B1

81 sq m / 872 sq ft
#16-05 to #20-05
#24-05 to #28-05
#32-05 to #35-05
#16-06* to #20-06*
#24-06* to #28-06*
#32-06* to #35-06*



(a) Applicable to: #16-05 to #20-05, #24-05 to #28-05, #32-05 to #35-05, #24-06* to #27-06*, #32-06* to #35-06*
(b) Applicable to: #16-06* to #20-06*, #28-06*
Note : - handed/ mirrored units not shown *represent mirrored unit
Area includes A/C ledge, balcony and void (where applicable). Plans are approximate measurements and are subject to amendments as may be required or approved by relevant authorities.

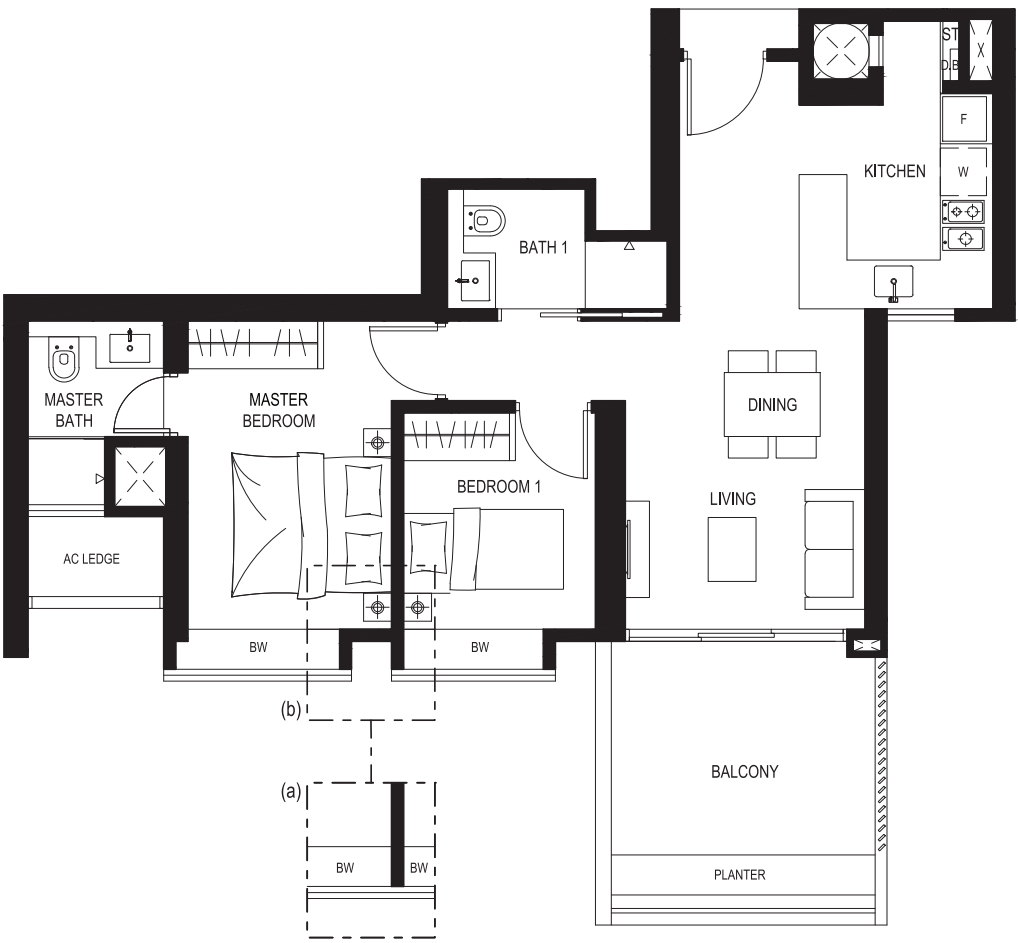


2-Bedroom

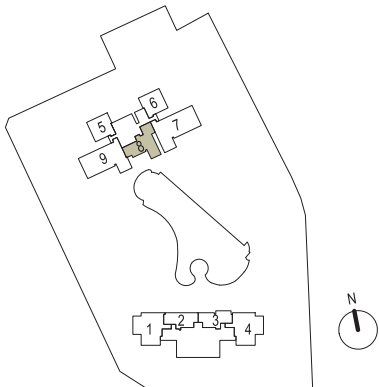


Type B2

75 sq m / 807 sq ft
#02-08 to #35-08



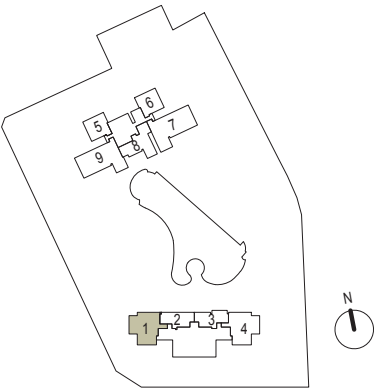
(a) Applicable to: #02-08 to #15-08, #21-08 to #24-08, #30-08 to #35-08
(b) Applicable to: #16-08 to #20-08, #25-08 to #29-08
Area includes A/C ledge, balcony and void (where applicable). Plans are approximate measurements and are subject to amendments as may be required or approved by relevant authorities.



2-Bedroom



Type B3
97 sq m / 1044 sq ft
#02-01 to #04-01

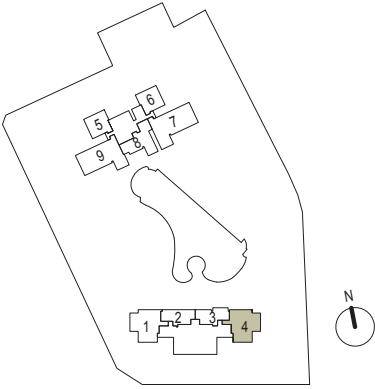
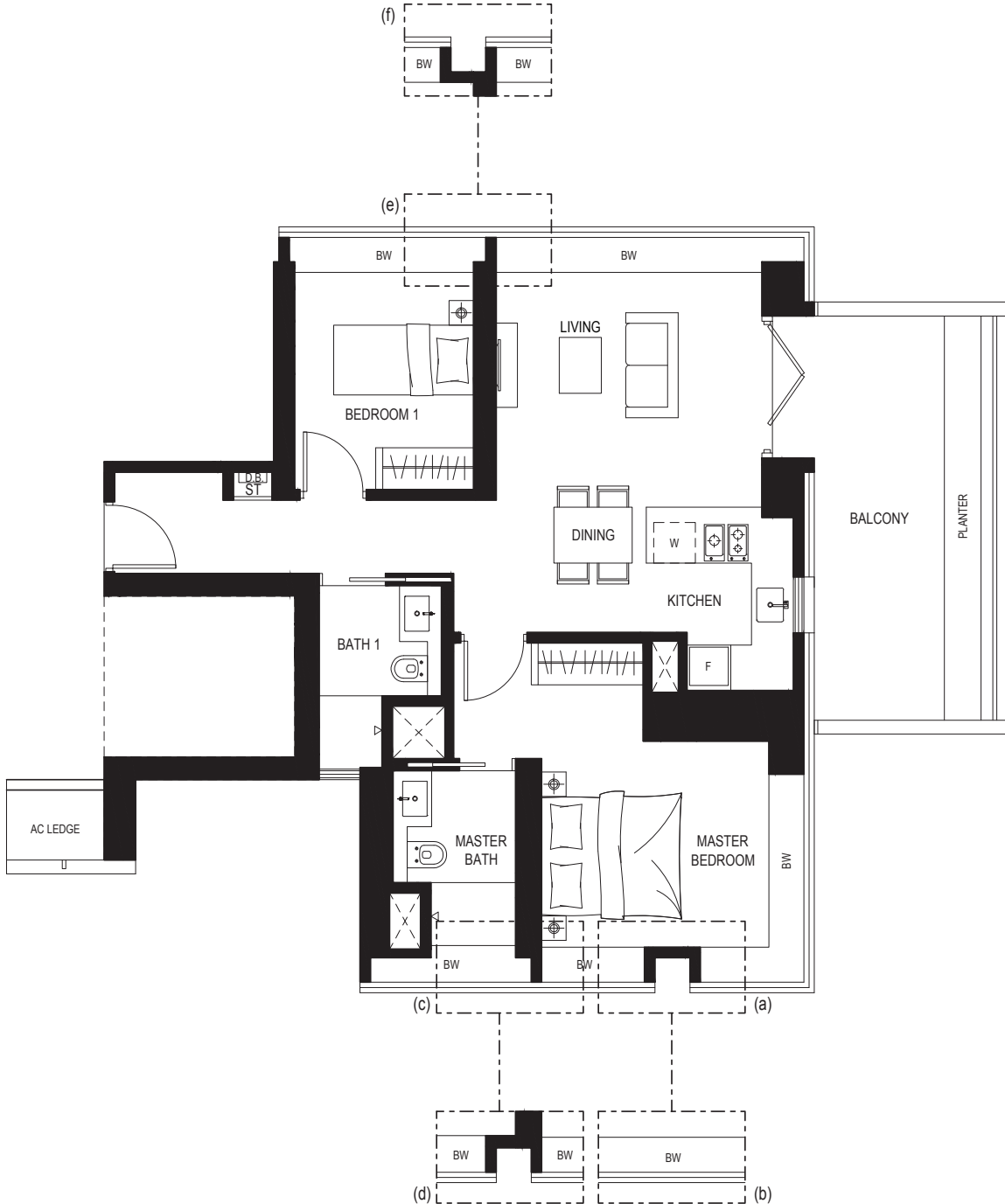


(a) Applicable to: #02-01 & #04-01 (b) Applicable to: #03-01 (c) Applicable to: #02-01
(d) Applicable to: #03-01 to #04-01 (e) Applicable to: #03-01 to #04-01 (f) Applicable to: #02-01
Area includes A/C ledge, balcony and void (where applicable). Plans are approximate measurements and are subject to amendments as may be required or approved by relevant authorities.

2-Bedroom



Type B4
97 sq m / 1044 sq ft
#02-04 to #04-04



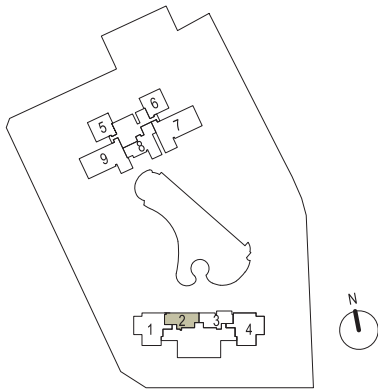
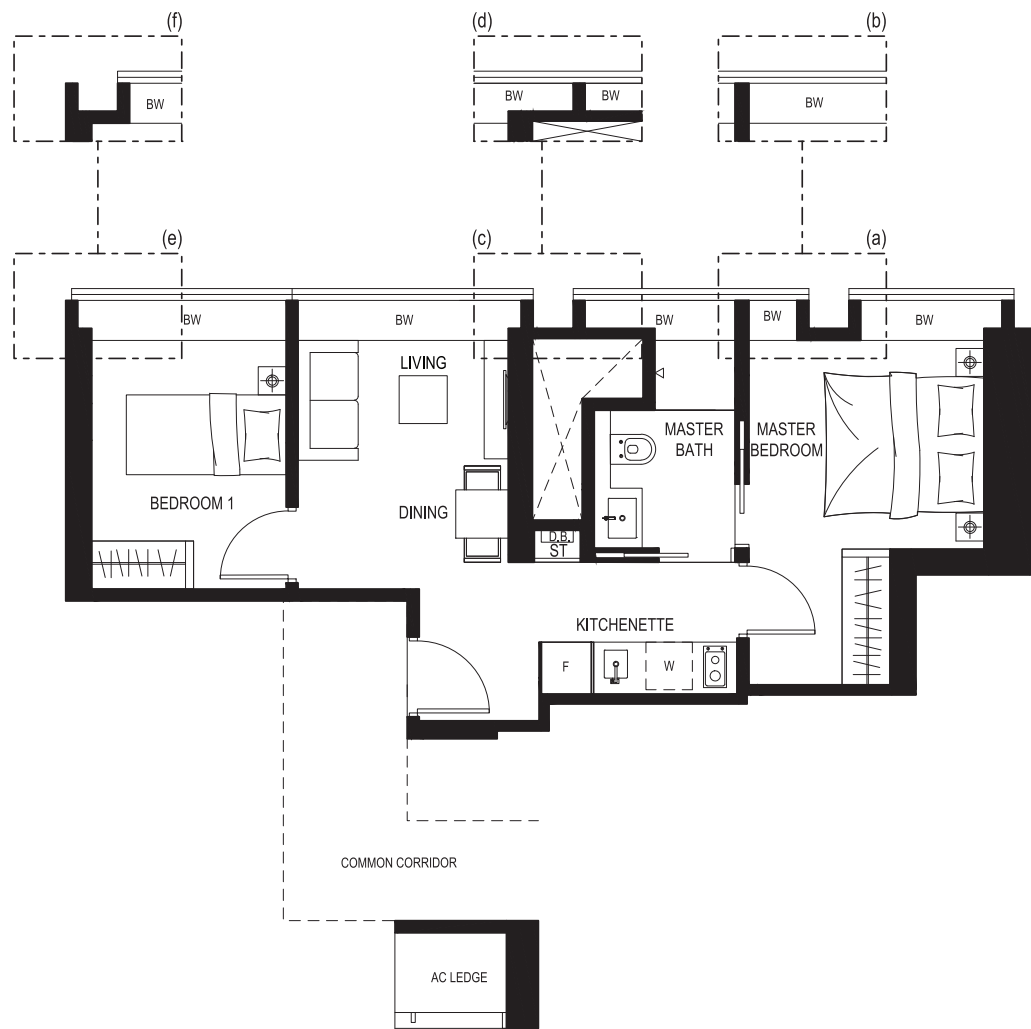
(a) Applicable to: #02-04 to #03-04 (b) Applicable to: #04-04 (c) Applicable to: #02-04 to #03-04
(d) Applicable to: #04-04 (e) Applicable to: #02-04 to #03-04 (f) Applicable to: #04-04
Area includes A/C ledge, balcony and void (where applicable). Plans are approximate measurements and are subject to amendments as may be required or approved by relevant authorities.

2-Bedroom



Type B5

51 sq m / 549 sq ft
#15-02 to #27-02



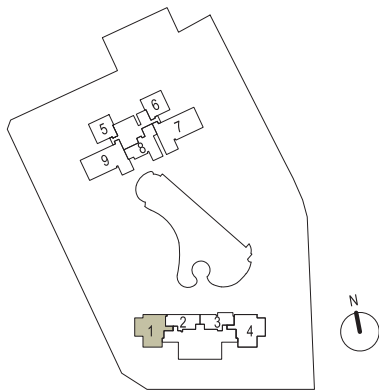
(a) Applicable to: #20-02 to #24-02 (b) Applicable to: #15-02 to #19-02, #25-02 to #27-02 (c) Applicable to: #15-02 to #24-02
(d) Applicable to: #25-02 to #27-02 (e) Applicable to: #19-02 to #24-02 (f) Applicable to: #15-02 to #18-02, #25-02 to #27-02
Area includes A/C ledge, balcony and void (where applicable). Plans are approximate measurements and are subject to amendments as may be required or approved by relevant authorities.

2-Bedroom



Type B6

97 sq m / 1044 sq ft
#15-01 to #27-01



(a) Applicable to: #15-01 to #18-01, #20-01 to #24-01 (b) Applicable to: #19-01, #25-01 to #27-01 (c) Applicable to: #15-01 to #24-01
(d) Applicable to: #25-01 to #27-01 (e) Applicable to: #19-01 to #27-01 (f) Applicable to: #15-01 to #18-01
Area includes A/C ledge, balcony and void (where applicable). Plans are approximate measurements and are subject to amendments as may be required or approved by relevant authorities.

3-Bedroom



Type C1

121 sq m / 1302 sq ft
#02-07* to #35-07*
#02-09 to #35-09

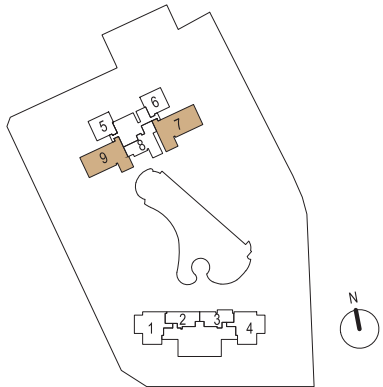


Actual Photo



(a) Applicable to: #02-09 to #07-09, #14-09 to #23-09, #28-09 to #31-09, #08-07* to #15-07*, #21-07* to #24-07*, #30-07* to #35-07*
(b) Applicable to: #08-09 to #13-09, #24-09 to #27-09, #32-09 to #35-09, #02-07* to #07-07*, #16-07* to #20-07*, #25-07* to #29-07*
(c) Applicable to: #02-09 to #07-09, #13-09 to #23-09, #28-09 to #31-09, #08-07* to #15-07*, #21-07* to #24-07*, #29-07* to #35-07*
(d) Applicable to: #08-09 to #12-09, #24-09 to #27-09, #32-09 to #35-09, #02-07* to #07-07*, #16-07* to #20-07*, #25-07* to #28-07*
(e) Applicable to: #02-09 to #07-09, #13-09 to #23-09, #28-09 to #31-09, #08-07* to #15-07*, #21-07* to #24-07*, #29-07* to #35-07*
(f) Applicable to: #08-09 to #12-09, #24-09 to #27-09, #32-09 to #35-09, #02-07* to #07-07*, #16-07* to #20-07*, #25-07* to #28-07*

Note : - handed/ mirrored units not shown *represent mirrored unit
Area includes A/C ledge, balcony and void (where applicable). Plans are approximate measurements and are subject to amendments as may be required or approved by relevant authorities.



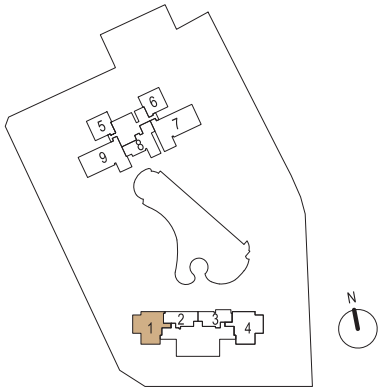
3-Bedroom



Type C2
107 sq m / 1152 sq ft
#05-01 to #14-01



(a) Applicable to: #05-01 to #08-01, #14-01 (b) Applicable to: #09-01 to #13-01 (c) Applicable to: #05-01 to #08-01, #14-01
(d) Applicable to: #09-01 to #13-01 (e) Applicable to: #05-01 to #13-01 (f) Applicable to: #14-01
(g) Applicable to: #05-01 to #08-01 (h) Applicable to: #09-01 to #14-01
Area includes A/C ledge, balcony and void (where applicable). Plans are approximate measurements and are subject to amendments as may be required or approved by relevant authorities.



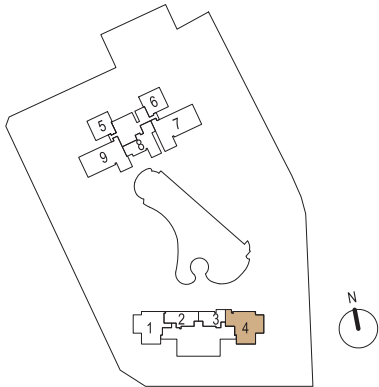
3-Bedroom



Type C3
106 sq m / 1141 sq ft
#05-04 to #07-04



Area includes A/C ledge, balcony and void (where applicable). Plans are approximate measurements and are subject to amendments as may be required or approved by relevant authorities.



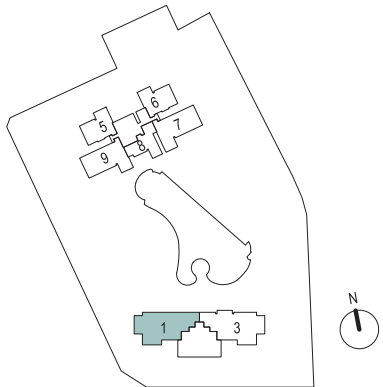
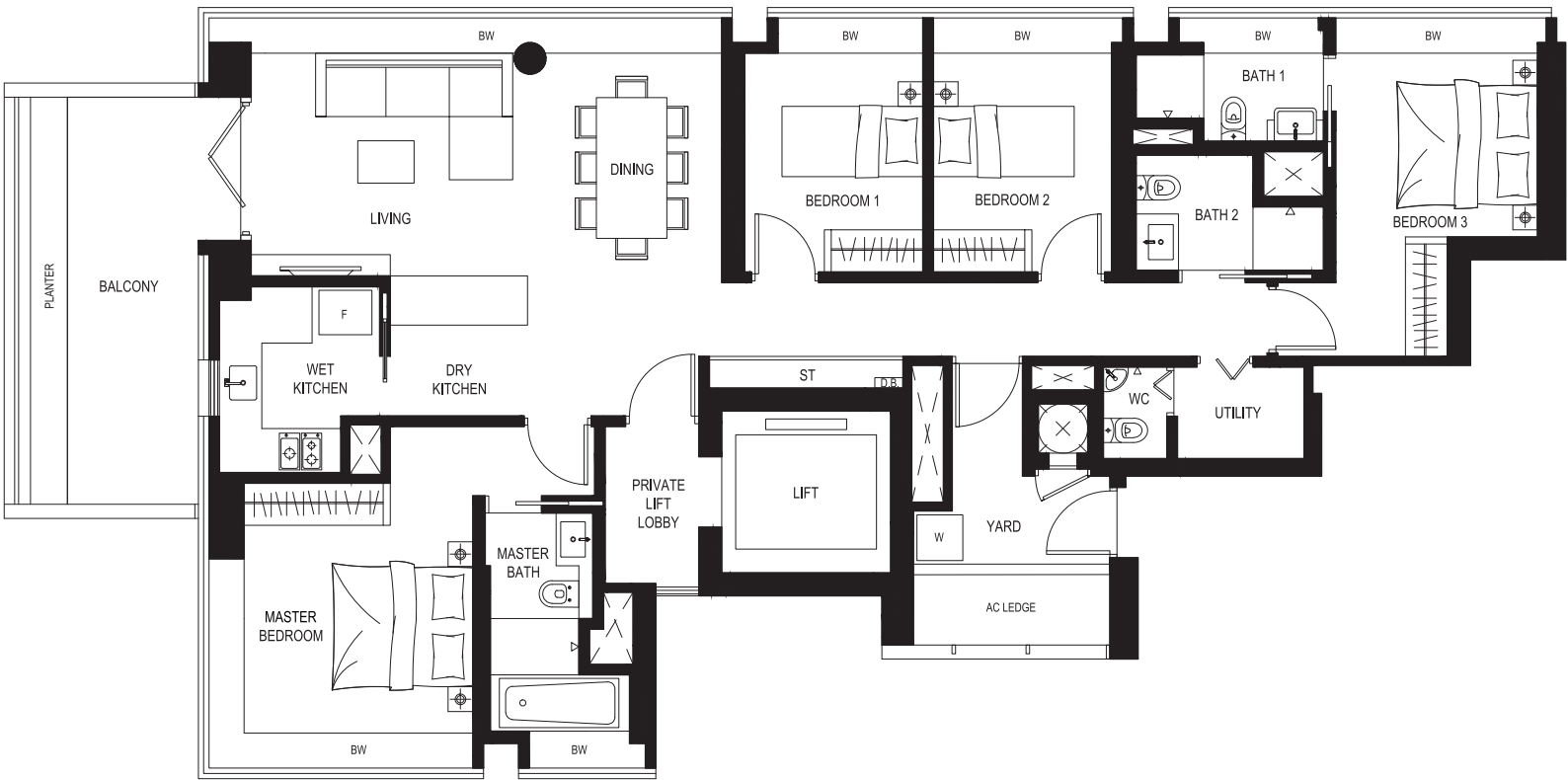
4-Bedroom



Type D1A
163 sq m / 1755 sq ft
#34-01



Actual Photo



Area includes A/C ledge, balcony and void (where applicable). Plans are approximate measurements and are subject to amendments as may be required or approved by relevant authorities.

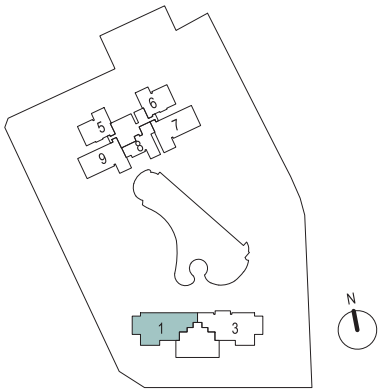
4-Bedroom



Type D1B
162 sq m / 1744 sq ft
#28-01 to #33-01



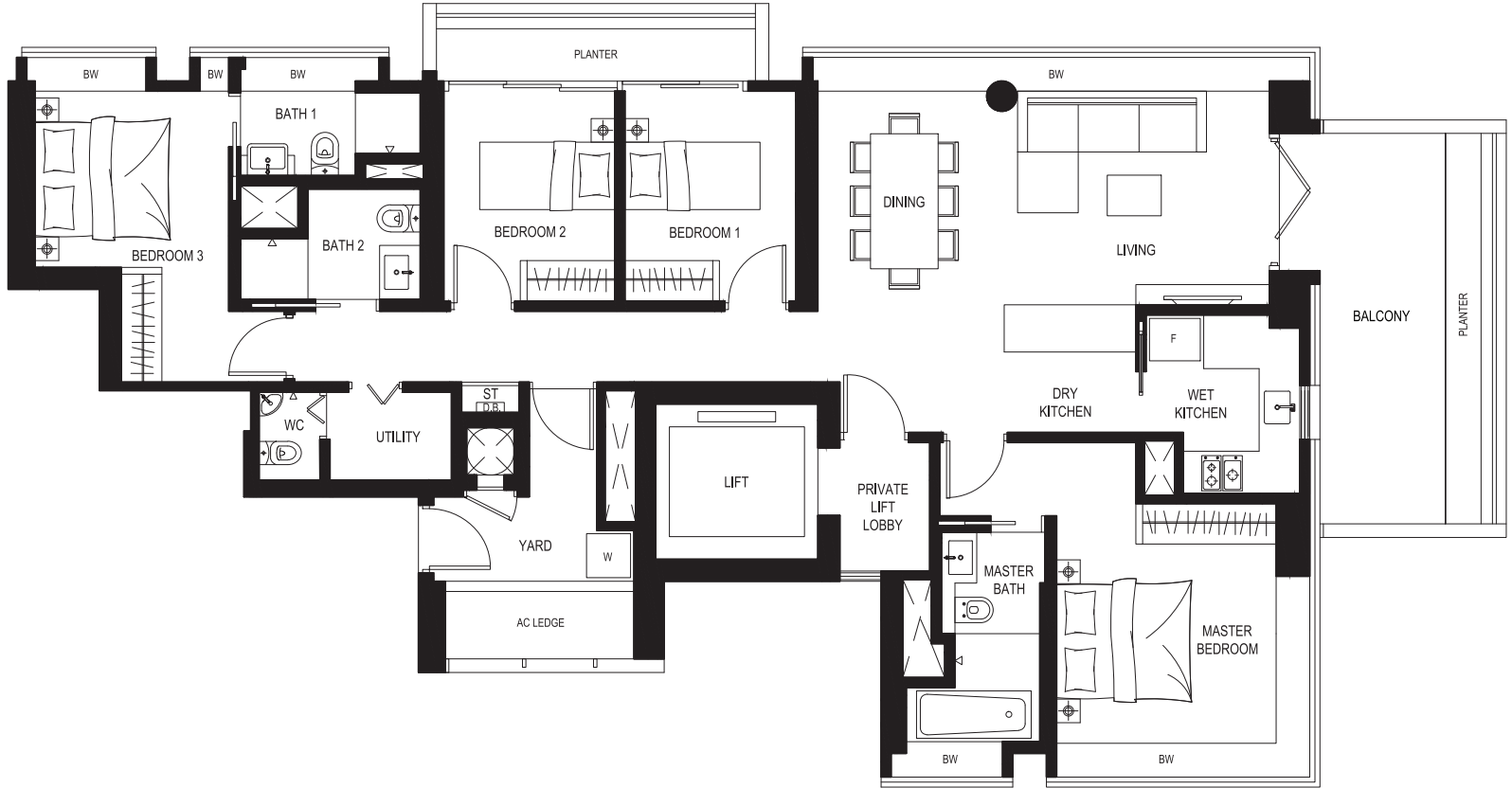
(a) Applicable to: #28-01 to #29-01 (b) Applicable to: #30-01 to #33-01 (c) Applicable to: #28-01 to #29-01 (d) Applicable to: #30-01 to #33-01
(e) Applicable to: #28-01 to #29-01 (f) Applicable to: #30-01 to #33-01 (g) Applicable to: #28-01 to #29-01 (h) Applicable to: 30-01 to #33-01
Area includes A/C ledge, balcony and void (where applicable). Plans are approximate measurements and are subject to amendments as may be required or approved by relevant authorities.



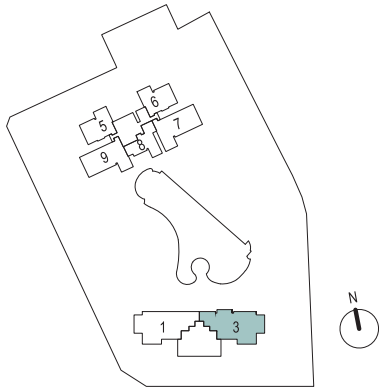
4-Bedroom



Type D2A
163 sq m / 1755 sq ft
#34-03



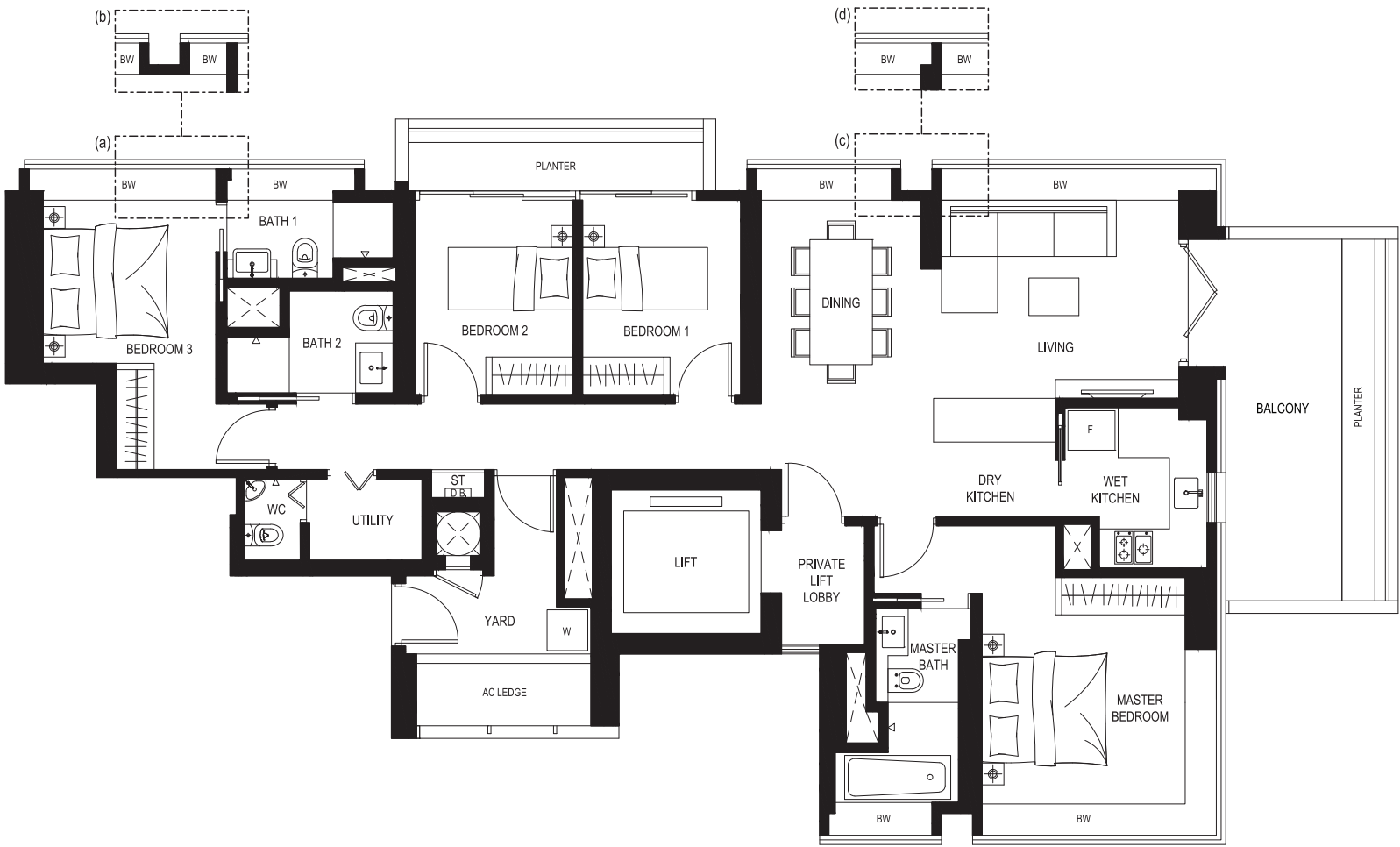
Area includes A/C ledge, balcony and void (where applicable). Plans are approximate measurements and are subject to amendments as may be required or approved by relevant authorities.



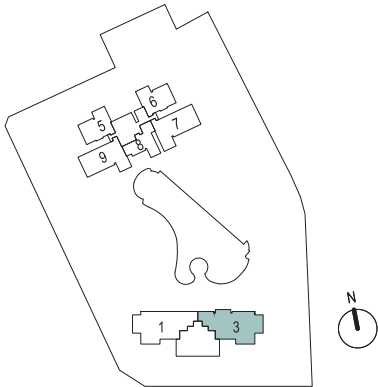
4-Bedroom



Type D2B
163 sq m / 1755 sq ft
#28-03 to #33-03



(a) Applicable to: #28-03 (b) Applicable to: #29-03 to #33-03 (c) Applicable to: #28-03 (d) Applicable to: #29-03 to #33-03
Area includes A/C ledge, balcony and void (where applicable). Plans are approximate measurements and are subject to amendments as may be required or approved by relevant authorities.



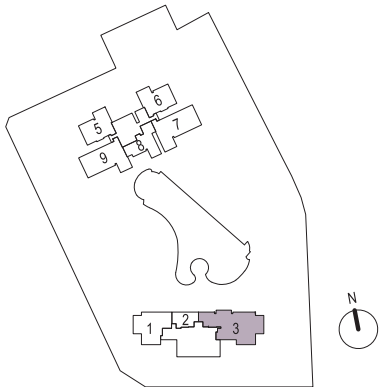
4-Bedroom Dual Key



Type DK1
157 sq m / 1690 sq ft
#08-03 to #27-03



(a) Applicable to: #08-03 to #09-03, #14-03 to #18-03, #23-03 to #27-03 (b) Applicable to: #10-03 to #13-03, #19-03 to #22-03
(c) Applicable to: #08-03, #14-03 to #18-03, #23-03 to #27-03 (d) Applicable to: #09-03 to #13-03, #19-03 to #22-03
(e) Applicable to: #08-03, #20-03 to #27-03 (f) Applicable to: #09-03 to #19-03 (g) Applicable to: #08-03 to #09-03, #23-03 to #27-03
(h) Applicable to: #10-03 to #22-03
Area includes A/C ledge, balcony and void (where applicable). Plans are approximate measurements and are subject to amendments as may be required or approved by relevant authorities.





BUKIT SEMBAWANG ESTATES LIMITED

Bukit Sembawang Estates Limited (BSEL) started developing landed properties in the 1950s and was incorporated in Singapore in 1967. It is one of the pioneer companies that obtained public-listing on SGX Mainboard in 1968. BSEL now focuses on property development, investments and other property-related activities.

Our Mission

As a leading and experienced property developer, we are committed to designing and building fine quality homes that satisfy the aspirations and lifestyles of our customers, for generations to come.

Our Milestone

For over half a century, Bukit Sembawang Estates Limited has built many of Singapore's renowned and established residential developments comprising landed homes, private condominiums and apartments.

Our Commitment

We value every customer, every family, and we shall remain dedicated to creating quality homes that property owners will love, cherish and appreciate – for generation after generation.

View actual showsuites | 8 St Thomas Walk | Tel: 6950 0333 | bsel.sg/8stthomas

Developer: Bukit Sembawang View Pte Ltd (ROC 199507006C) - Developer's Licence No.: C0645 - Tenure: Estate in fee simple - Building Plan No.: BP No. A0909-00001-2007-BP01 dated 6 July 2010, BP No. A0909-00001-2007-BP02 dated 21 August 2012, BP No. A0909-00001-2007-BP03 dated 21 October 2014, BP No. A0909-00001-2007-BP04 dated 21 September 2015, BP No. A0909-00001-2007-BP05 dated 20 October 2016, BP No. A0909-00001-2007-BP06 dated 20 June 2017 - Land Lot: TS21-444C, TS21-445M, TS21-609T - Expected Date of Vacant Possession: 31 July 2019 - Expected Legal Completion: 31 July 2022 - Encumbrances: NIL

Disclaimer:
Whilst reasonable care has been taken in the preparation of this brochure, the developer cannot be held responsible for any inaccuracies or omissions. The statements, information and depictions shall not be regarded or relied upon as statements or representations of fact, and are subject to such changes as may be required by the developer or the relevant authorities, and cannot form part of an offer or contract. Visual representations, models, showflat, illustrations, photographs, pictures, drawings, displays and art renderings are artists' impressions only, and cannot be regarded as representation of fact. All plans and layouts are not to scale and are subject to change/amendments as may be directed or approved by the relevant authorities. The floor areas indicated in the brochure are approximate measurements only and are subject to final survey. The Sale and Purchase Agreement shall form the entire agreement between the developer and the purchaser and shall in no way be modified by any statements or representations (whether contained in this brochure or otherwise). All information, plans and specifications are current at the time of print and are subject to change as may be required or approved by the developer or the relevant authorities.

All exterior photos in this brochure are by © 2018 Robert Such Photography Pte Ltd.



Actual Photo

