

From the city. From responsibility.
From the hustle and bustle.
Not far enough to lose touch, but just far enough.

To breathe.

To inhale life. And exhale limits.
With space to grow. As a person. A family. And a legacy.
With greens to get lost in and find yourself.
Surrounded by modern mountains and age old trees.
Crafted landscapes and wild imagination.

Return to a life made smarter.
And an existence made wiser.
So that you can live bolder.

Take a deep breath.
You're home.

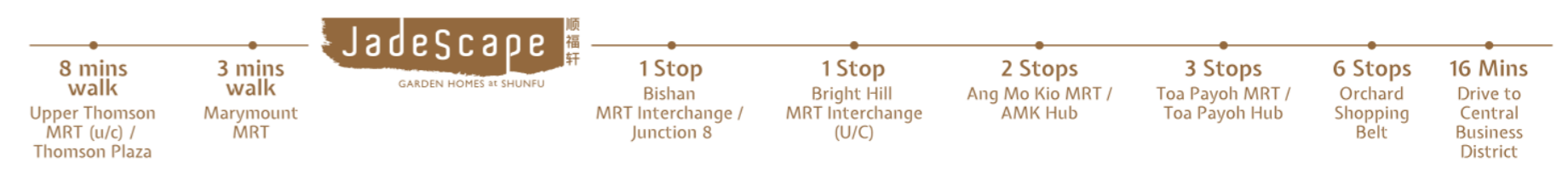
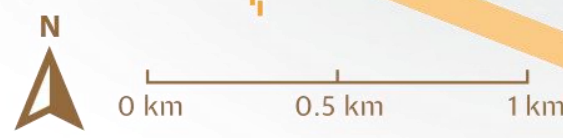
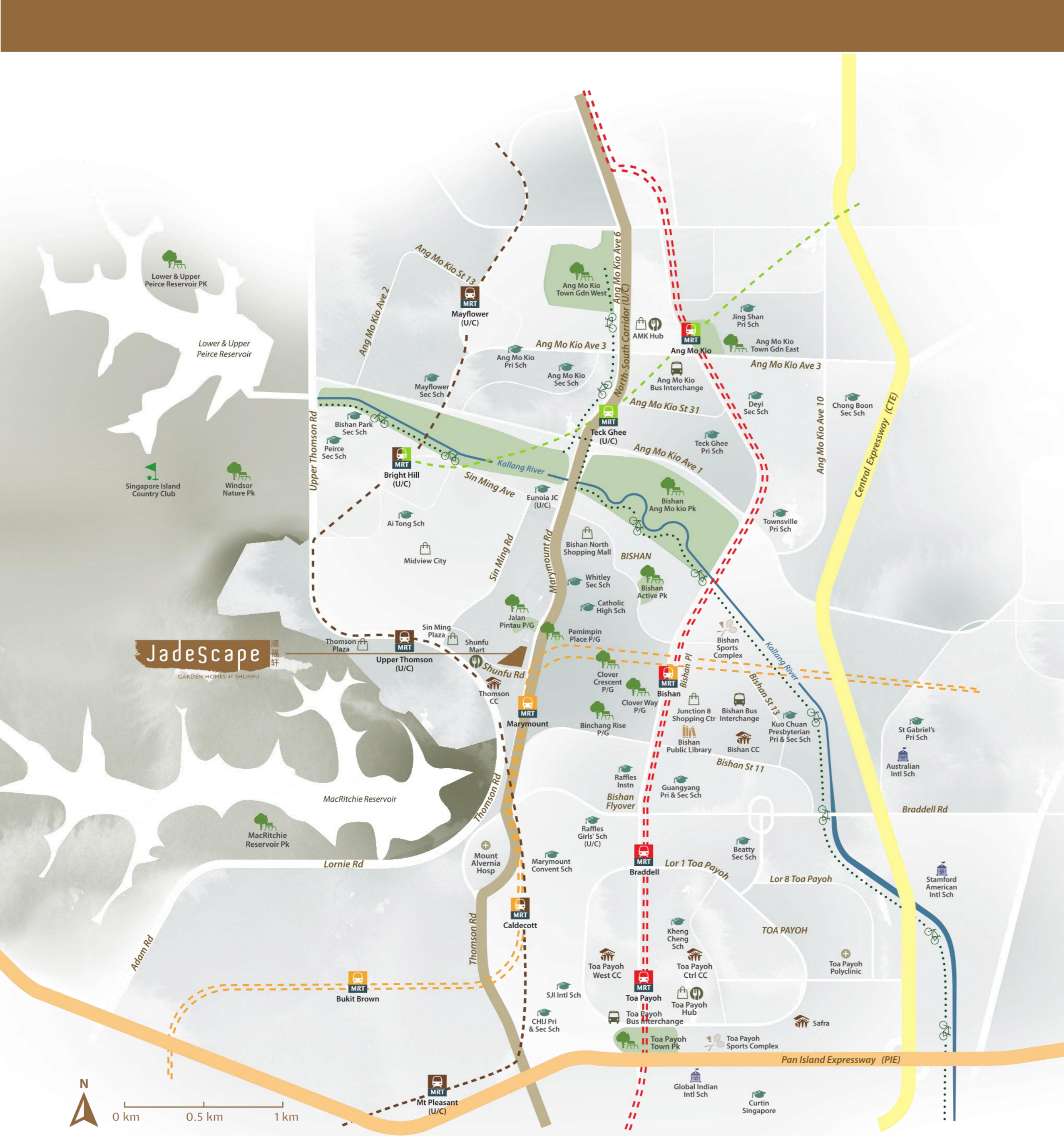
Return, home.





Return,
to a picturesque landscape.

If there's one thing to be said about JadeScape, it would be that it was built to spark awe. With 7 peaks that strike the silver edge of the sky. Carved waterways in its valley. And green life that is fed by those same waters. From the minute you walk in, to the time you lay down in your home, the majesty of it all is unyielding.



Location Map

- Bus Interchange
- Shopping Mall
- Food Centre
- School
- International School
- Library
- Community Club
- Golf Course
- Sport Complex
- Hospital & Medical Care
- Garden & Park

Schools

- Primary Schools**
- Less Than 1 km**
- Catholic High School
- Between 1 km - 2 km**
- Ai Tong School
 - Ang Mo Kio Primary School
 - Guangyang Primary School
 - Kuo Chuan Presbyterian Primary School
 - Kheng Cheng School
 - Marymount Convent School
 - Teck Ghee Primary School
 - Townsville Primary School
- More Than 2 km**
- CHIJ Primary School (Toa Payoh)
 - Jing Shan Primary School
 - St Gabriel's Primary School
- Secondary & Tertiary Schools**
- Ang Mo Kio Secondary School
 - Beatty Secondary School
 - Bishan Park Secondary School
 - Catholic High School
 - CHIJ Secondary School (Toa Payoh)
 - Chong Boon Secondary School
 - Curtin Singapore
 - Deyi Secondary School
 - Eunoia Junior College (U/C)
 - Guangyang Secondary School
 - Kuo Chuan Presbyterian Secondary School
 - Mayflower Secondary School
 - Peirce Secondary School
 - Raffles Girls' School (U/C)
 - Raffles Institution
 - SJI International School
 - Whitley Secondary School

- Mass Rapid Transit
- North South Line
- Circle Line
- Thomson-East Coast Line (U/C)
- Cross Island Line (U/C)
- Expressway
- North-South Corridor (U/C)
- Central Expressway (CTE)
- Pan Island Expressway (PIE)

International Schools

- Australian International School
- Global Indian International School
- Stamford American International School

Hospitals & Medical Care

- Mount Alvernia Hospital
- Toa Payoh Polyclinic

Shopping Malls & Food Centres

- Ang Mo Kio Hub
- Bishan North Shopping Mall
- Junction 8 Shopping Centre
- Mid View City
- Shunfu Mart
- Sin Ming Plaza
- Thomson Plaza
- Toa Payoh Hub

Park Connector Network





The connected commuter

Just around the bend from Marymount MRT Station and future Upper Thomson MRT Station, the city is just a train ride away or a quick drive down the North-South Corridor.



The ecstatic entertainment

Just a little over a kilometre walk to Thomson Plaza, work up an appetite while shopping and visit Thomson Road for a wide variety of restaurants and cafes fit to satisfy any cravings.

For an even bigger treat Shunfu Mart offers up a place where the long queues justify the mouth watering food served up, and you can get your marketing done at the same time at one of the best stocked wet markets in Singapore.

Or when it's nice out in the evenings, go for a stroll, grab some dinner and catch a movie at Bishan Junction 8.



A lifetime of learning

Watch as life progresses. From a child's first day of school, to when adolescence kicks in and they run off with their friends to the nearby malls. Soon they'll graduate and be off to college, stepping out as an independent adult. But take comfort in knowing they're never too far from home.

Covering all stages of education from primary to college, there are several excellent national schools within the vicinity including Ai Tong School, Catholic High School, Raffles Institution and the future Raffles Girls' School, as well as Junior Colleges and International Schools.





The majesty of MacRitchie

Bordering the first and oldest of four reservoirs found in Singapore, MacRitchie Reservoir Park is home to 12 hectares of nature's best reserve. Stand amongst the heights of primary rainforest, paddle along the water's edge or hike its many cross country trails for a weekend outdoors.



The beauty of Bishan-Ang Mo Kio Park

One of the largest urban parks in Singapore, Bishan-Ang Mo Kio Park is 62 hectare of open fields, pond gardens, river plains and unique waterways reconstructed from past concrete canals. Along with an almost unlimited supply of park activities for every generation.

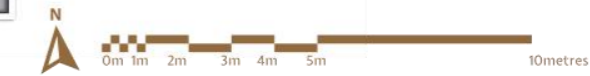
Site Plan

And through the meandering gardens, skipping across pools of water, you scale the mountains and finally arrive. Home, where a welcome of unobstructed views stretches across the horizon.



SKY TERRACE

Block 10 & 12 (Level 13)



LEGEND

- | | | |
|-----------------------------------|------------------------------------|-------------------------------|
| 1 Drop Off | 41 Maze Garden | 81 Sun Deck |
| 2 Concierge | 42 Community Garden | 82 50m Skyline Pool |
| 3 Grand Plaza | 43 Adventure Playground | 83 Aqua Massaging Seats |
| 4 Sculpture Courtyard | 44 Forest Trail | 84 Aqua Sunbath |
| 5 Leisure Lawn | 45 Forest Stream | 85 Lantern Island |
| 6 West Courtyard | 46 Oriental Pavilion | 86 Island Deck |
| 7 West Atrium Pavilion | 47 Jogging Trail | 87 Island Bar |
| 8 Feature Tree Courtyard | 48 Tranquil Pond | 88 Aqua Gym |
| 9 East Courtyard | 49 Changing Rooms (at Hilltop Gym) | 89 Jets Pool |
| 10 East Atrium Pavilion | 50 Hilltop Gym | 90 Main Gym |
| 11 Theatre | 51 Executive Lounge | 91 Lounge |
| 12 Karaoke Room 1 & 2 | 52 Heated Foot Therapy | 92 Changing Rooms (at Lounge) |
| 13 Atrium Courtyard | 53 Forest Waterfall | |
| 14 Serenity Lounge | 54 Japanese Pavilion | |
| 15 Tennis Court 1 & 2 | 55 Butterfly Garden Trail | |
| 16 Outdoor Training Area | 56 Bio Pond | |
| 17 Woodfire (BBQ Pit 1-4) | 57 Zen Pavilion | |
| 18 Putting Green | 58 Koi Pond | |
| 19 Waterfall Corridor | 59 Cascading Waterfall | |
| 20 Games Room | 60 Heated Massage Jet | |
| 21 Sapphire Room | 61 Sauna | |
| 22 Ruby Room | 62 Steam Room | |
| 23 Changing Rooms (at Kid's Pool) | 63 Wellness Lounge | |
| 24 Kid's Club | 64 Tropical Pavilion | |
| 25 Kid's Pool | 65 Pets Corner | |
| 26 Kid's Pool Deck | 66 Tai-Chi Lawn | |
| 27 Sunrise Lawn | 67 Heliconia Garden | |
| 28 Sensory Trail | 68 Hammock Garden | |
| 29 Sunrise Pavilion | 69 Family Pavilion | |
| 30 Lantern Trail | 70 3-Gen Fitness Corner | |
| 31 Sunrise Stream | 71 Tiny Tot's Playground | |
| 32 50m Infinity Pool | 72 Bamboo Grove | |
| 33 Sky Deck | 73 Foot Reflexology | |
| 34 Grand Boulevard | 74 Virtual Golf 1 & 2 | |
| 35 Cascading Stream | 75 Wash Room | |
| 36 Herbs Garden | 76 Changing Rooms (at pool deck) | |
| 37 Party Lawn | 77 Jade Room | |
| 38 Grill Pit Pavilion A & B | 78 Emerald Room | |
| 39 Chill Out Lawn | 79 Atrium Lounge | |
| 40 Bubbling Stream | 80 Foliage Garden | |

Unit Types

- Gold Standard (1 Bedroom)
- 1 Bedroom
- 1 Bedroom + Study
- 2 Bedroom
- 2 Bedroom Deluxe
- 2 Bedroom Premium
- 3 Bedroom
- 3 Bedroom Deluxe
- 3 Bedroom Deluxe
- 3 Bedroom Premium
- 4 Bedroom
- 4 Bedroom Deluxe
- 4 Bedroom Suite
- 5 Bedroom Suite
- Penthouse

Sky Terrace Block 10 & 12 (Level 13)

- 93 Sky Daybed
- 94 Seating Lounge
- 95 Viewing Deck
- 96 Sky Cabana

Water Tank Location



Unit Types

Legend

- Gold Standard (1 Bedroom)
- 1 Bedroom
- 1 Bedroom + Study
- 2 Bedroom
- 2 Bedroom Deluxe
- 2 Bedroom Premium
- 3 Bedroom
- 3 Bedroom Deluxe
- 3 Bedroom Deluxe
- 3 Bedroom Premium
- 4 Bedroom
- 4 Bedroom Deluxe
- 4 Bedroom Suite
- 5 Bedroom Suite
- Penthouse

Block 2
Shunfu Road
Singapore 575742

Unit Flr	1	2	3	4	5	6	7	8	9
23	B2	B3	B3	A	A	ASa	C1b	D1	B2
22	B2	B3	B3	A	A	ASa	C1b	D1	B2
21	B2	B3	B3	A	A	ASa	C1b	D1	B2
20	B2	B3	B3	A	A	ASa	C1b	D1	B2
19	B2	B3	B3	A	A	ASa	C1b	D1	B2
18	B2	B3	B3	A	A	ASa	C1b	D1	B2
17	B2	B3	B3	A	A	ASa	C1b	D1	B2
16	B2	B3	B3	A	A	ASa	C1b	D1	B2
15	B2	B3	B3	A	A	ASa	C1b	D1	B2
14	B2	B3	B3	A	A	ASa	C1b	D1	B2
13	B2	B3	B3	A	A	ASa	C1b	D1	B2
12	B2	B3	B3	A	A	ASa	C1b	D1	B2
11	B2	B3	B3	A	A	ASa	C1b	D1	B2
10	B2	B3	B3	A	A	ASa	C1b	D1	B2
9	B2	B3	B3	A	A	ASa	C1b	D1	B2
8	B2	B3	B3	A	A	ASa	C1b	D1	B2
7	B2	B3	B3	A	A	ASa	C1b	D1	B2
6	B2	B3	B3	A	A	ASa	C1b	D1	B2
5	B2	B3	B3	Ag	A	ASa	C1b	D1	B2
4	B2	B3	B3	A	A	ASa	C1b	D1	B2
3	B2	B3	B3	A	A	ASa	C1b	D1	B2
2	B2	B3						D1	B2
1	B2(P)	B3(P)						D1(P)	B2(P)

Block 6
Shunfu Road
Singapore 575744

Unit Flr	19	20	21	22	23	24	25	26
23	B1	C2b	C2b	B2	B2	D1	D2	B1
22	B1	C2b	C2b	B2	B2	D1	D2	B1
21	B1	C2b	C2b	B2	B2	D1	D2	B1
20	B1	C2b	C2b	B2	B2	D1	D2	B1
19	B1	C2b	C2b	B2	B2	D1	D2	B1
18	B1	C2b	C2b	B2	B2	D1	D2	B1
17	B1	C2b	C2b	B2	B2	D1	D2	B1
16	B1	C2b	C2b	B2	B2	D1	D2	B1
15	B1	C2b	C2b	B2	B2	D1	D2	B1
14	B1	C2b	C2b	B2	B2	D1	D2	B1
13	B1	C2b	C2b	B2	B2	D1	D2	B1
12	B1	C2b	C2b	B2	B2	D1	D2	B1
11	B1	C2b	C2b	B2	B2	D1	D2	B1
10	B1	C2b	C2b	B2	B2	D1	D2	B1
9	B1	C2a	C2a	B2	B2	D1	D2	B1
8	B1	C2a	C2a	B2	B2	D1	D2	B1
7	B1	C2a	C2a	B2	B2	D1	D2	B1
6	B1	C2a	C2a	B2	B2	D1	D2	B1
5	B1	C2a	C2a	B2	B2	D1	D2	B1
4	B1	C2a	C2a	B2	B2	D1	D2	B1
3	B1	C2a	C2a	B2	B2	D1	D2	B1
2	B1	C2a	C2a	B2	B2	D1	D2	B1
1			C2a(P)	B2(P)	B2(P)	D1(P)		

Block 4
Shunfu Road
Singapore 575743

Unit Flr	10	11	12	13	14	15	16	17	18
23	B2	C2b	C2b	A	A	A	C1a	D2	B2
22	B2	C2b	C2b	A	A	A	C1a	D2	B2
21	B2	C2b	C2b	A	A	A	C1a	D2	B2
20	B2	C2b	C2b	A	A	A	C1a	D2	B2
19	B2	C2b	C2b	A	A	A	C1a	D2	B2
18	B2	C2b	C2b	A	A	A	C1a	D2	B2
17	B2	C2b	C2b	A	A	A	C1a	D2	B2
16	B2	C2b	C2b	A	A	A	C1a	D2	B2
15	B2	C2b	C2b	A	A	A	C1a	D2	B2
14	B2	C2b	C2b	A	A	A	C1a	D2	B2
13	B2	C2b	C2b	A	A	A	C1a	D2	B2
12	B2	C2b	C2b	A	A	A	C1a	D2	B2
11	B2	C2b	C2b	A	A	A	C1a	D2	B2
10	B2	C2b	C2b	A	A	A	C1a	D2	B2
9	B2	C2a	C2a	A	A	A	C1a	D2	B2
8	B2	C2a	C2a	A	A	A	C1a	D2	B2
7	B2	C2a	C2a	A	A	A	C1a	D2	B2
6	B2	C2a	C2a	A	A	A	C1a	D2	B2
5	B2	C2a	C2a	A	A	A	C1a	D2	B2
4	B2	C2a	C2a	A	A	A	C1a	D2	B2
3	B2	C2a	C2a	A	A	A	C1a	D2	B2
2	B2	C2a	C2a	A	A	A	C1a	D2	B2
1	B2(P)	C2a(P)	C2a(P)	A(P)	A(P)	A(P)	C1a(P)		B2(P)

Block 8
Shunfu Road
Singapore 575745

Unit Flr	27	28	29	30	31	32	33	34
23	B1	C2b	C2b	B2	B2	D2	D1	B1
22	B1	C2b	C2b	B2	B2	D2	D1	B1
21	B1	C2b	C2b	B2	B2	D2	D1	B1
20	B1	C2b	C2b	B2	B2	D2	D1	B1
19	B1	C2b	C2b	B2	B2	D2	D1	B1
18	B1	C2b	C2b	B2	B2	D2	D1	B1
17	B1	C2b	C2b	B2	B2	D2	D1	B1
16	B1	C2b	C2b	B2	B2	D2	D1	B1
15	B1	C2b	C2b	B2	B2	D2	D1	B1
14	B1	C2b	C2b	B2	B2	D2	D1	B1
13	B1	C2b	C2b	B2	B2	D2	D1	B1
12	B1	C2b	C2b	B2	B2	D2	D1	B1
11	B1	C2b	C2b	B2	B2	D2	D1	B1
10	B1	C2b	C2b	B2	B2	D2	D1	B1
9	B1	C2a	C2a	B2	B2	D2	D1	B1
8	B1	C2a	C2a	B2	B2	D2	D1	B1
7	B1	C2a	C2a	B2	B2	D2	D1	B1
6	B1	C2a	C2a	B2	B2	D2	D1	B1
5	B1	C2a	C2a	B2	B2	D2	D1	B1
4	B1	C2a	C2a	B2	B2	D2	D1	B1
3	B1	C2a	C2a	B2	B2	D2	D1	B1
2	B1	C2a	C2a	B2	B2	D2	D1	B1
1	B1(P)	C2a(P)	C2a(P)	B2(P)	B2(P)	D2(P)	D1(P)	B1(P)

Block 10
Shunfu Road
Singapore 575746

Unit Flr	35	36	37	38	39	40
22	B2	D1	PH			EP
21	B2	D1	DP	ASb	DP	EP
20	B2	D1	DP	ASb	DP	EP
19	B2	D1	DP	ASb	DP	EP
18	B2	D1	DP	ASb	DP	EP
17	B2	D1	DP	ASb	DP	EP
16	B2	D1	DP	ASb	DP	EP
15	B2	D1	DP	ASb	SKY TERRACE	
14	B2	D1	DP	ASb		
13	B2	D1	DP	ASb		
12	B2	D1	DP	ASb	DP	EP
11	B2	D1	DP	ASb	DP	EP
10	B2	D1	DP	ASb	DP	EP
9	B2	D1	DP	ASb	DP	EP
8	B2	D1	DP	ASb	DP	EP
7	B2	D1	DP	ASb	DP	EP
6	B2	D1	DP	ASb	DP	EP
5	B2	D1	DP	ASb	DP	EP
4	B2	D1	DP	ASb	DP	EP
3	B2	D1	DP	ASb	DP	EP
2	B2	D1	DP	ASb	DP	EP
1		D1(P)	DP(P)		DP(P)	EP(P)

Unit Types

Legend

- Gold Standard
(1 Bedroom)
- 1 Bedroom
- 1 Bedroom + Study
- 2 Bedroom
- 2 Bedroom Deluxe
- 2 Bedroom Premium
- 3 Bedroom
- 3 Bedroom Deluxe
- 3 Bedroom Deluxe
- 3 Bedroom Premium
- 4 Bedroom
- 4 Bedroom Deluxe
- 4 Bedroom Suite
- 5 Bedroom Suite
- Penthouse

Block 12
Shunfu Road
Singapore 575747

Unit Flr	41	42	43	44	45	46
23	B2	D1	PH			EP
22	B2	D1	DP	A	DP	EP
21	B2	D1	DP	A	DP	EP
20	B2	D1	DP	A	DP	EP
19	B2	D1	DP	A	DP	EP
18	B2	D1	DP	A	DP	EP
17	B2	D1	DP	A	DP	EP
16	B2	D1	DP	A	DP	EP
15	B2	D1	DP	A	SKY TERRACE	
14	B2	D1	DP	A		
13	B2	D1	DP	A		
12	B2	D1	DP	A	DP	EP
11	B2	D1	DP	A	DP	EP
10	B2	D1	DP	A	DP	EP
9	B2	D1	DP	A	DP	EP
8	B2	D1	DP	A	DP	EP
7	B2	D1	DP	A	DP	EP
6	B2	D1	DP	A	DP	EP
5	B2	D1	DP	A	DP	EP
4	B2	D1	DP	A	DP	EP
3	B2	D1	DP	A	DP	EP
2	B2	D1	DP	A	DP	EP
1		D1(P)	DP(P)		DP(P)	EP(P)

Block 16
Shunfu Road
Singapore 575749

Unit Flr	54	55	56	57	58	59	60	61	62
21	B2	C3b	C1a	A	A	A	C1b	C3a	B2
20	B2	C3b	C1a	A	A	A	C1b	C3a	B2
19	B2	C3b	C1a	A	A	A	C1b	C3a	B2
18	B2	C3b	C1a	A	A	A	C1b	C3a	B2
17	B2	C3b	C1a	A	A	A	C1b	C3a	B2
16	B2	C3b	C1a	A	A	A	C1b	C3a	B2
15	B2	C3b	C1a	A	A	A	C1b	C3a	B2
14	B2	C3b	C1a	A	A	A	C1b	C3a	B2
13	B2	C3b	C1a	A	A	A	C1b	C3a	B2
12	B2	C3b	C1a	A	A	A	C1b	C3a	B2
11	B2	C3b	C1a	A	A	A	C1b	C3a	B2
10	B2	C3b	C1a	A	A	A	C1b	C3a	B2
9	B2	C3b	C1a	A	A	A	C1b	C3a	B2
8	B2	C3b	C1a	A	A	A	C1b	C3a	B2
7	B2	C3b	C1a	A	A	A	C1b	C3a	B2
6	B2	C3b	C1a	A	A	A	C1b	C3a	B2
5	B2	C3b	C1a	A	A	A	C1b	C3a	B2
4	B2	C3b	C1a	A	A	A	C1b	C3a	B2
3	B2	C3b	C1a	A	A	A	C1b	C3a	B2
2	B2	C3b	C1a	A	A	A	C1b	C3a	B2
1	B2(P)	C3b(P)	C1a(P)	A(P)	A(P)	A(P)	C1b(P)	C3a(P)	B2(P)

Gold Standard 1 Bedroom

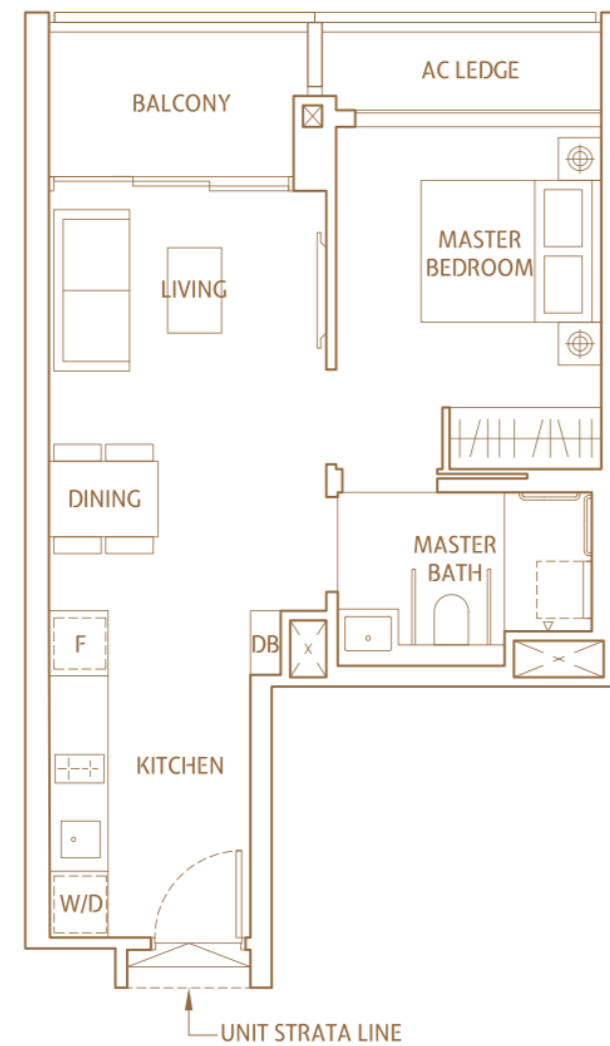
Type Ag

527 sqft (49 sqm)

BLOCK 2
#05-04

The Gold Standard Unit

Designed with fixtures and fittings with your comfort and safety in mind, the gold standard units are equipped to assist and support your way of life at every turn.



General Provision

- Ramps at entrance and balcony
- Vinyl flooring
- Fan with built-in lighting in living room
- Two-way light switches for convenient control in the day and night

Kitchen Provision

- Pull-down hydraulic rack
- Upper cabinets with see-through panels
- Lowered kitchen counter design for easier access

Bathroom Provision

- Grab bars
- Wall mounted seat in the shower
- Slip resistant floor tiles

Bedroom Provision

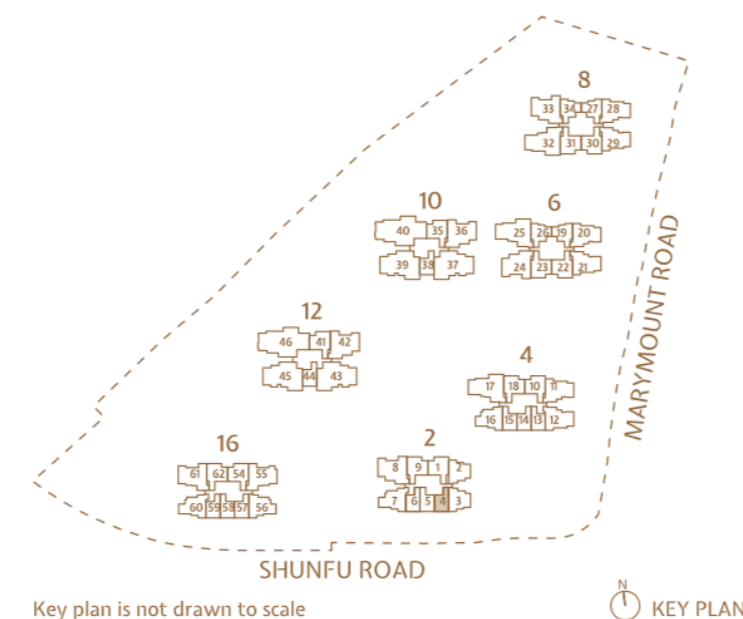
- Pull-down hydraulic wardrobe hanger

LEGEND

- W/D WASHER CUM DRYER
- F INTEGRATED FRIDGE

NOTE
FOR INFORMATION OF VARYING LENGTH OF DIVIDING WALL BETWEEN ADJACENT UNITS AND/OR FACADE FEATURES VISIBLE TO UNITS, WHERE APPLICABLE, AND NOT DEPICTED IN THE UNIT FLOOR PLAN, PLEASE REFER TO THE RESPECTIVE BLOCK PLAN(S).

AREA INCLUDES A/C LEDGE, BALCONY AND PRIVATE ENCLOSED SPACE (PES) WHERE APPLICABLE. THE ABOVE PLANS AND ILLUSTRATIONS ARE SUBJECT TO CHANGE AS MAYBE REQUIRED OR APPROVED BY THE RELEVANT AUTHORITIES. ALL FLOOR AREAS ARE APPROXIMATE ONLY AND SUBJECT TO FINAL SURVEY. PLEASE REFER TO THE KEY PLAN FOR ORIENTATION.



Key plan is not drawn to scale

KEY PLAN

1 Bedroom

Type A(P)

527 sqft (49 sqm)

BLOCK 4
#01-14

BLOCK 16
#01-57
#01-59

MIRRORED

BLOCK 4
#01-13
#01-15

BLOCK 16
#01-58



Type A

527 sqft (49 sqm)

BLOCK 2
#03-04 TO #23-04
(except #05-04)

BLOCK 4
#02-14 TO #23-14

BLOCK 12
#02-44 TO #22-44

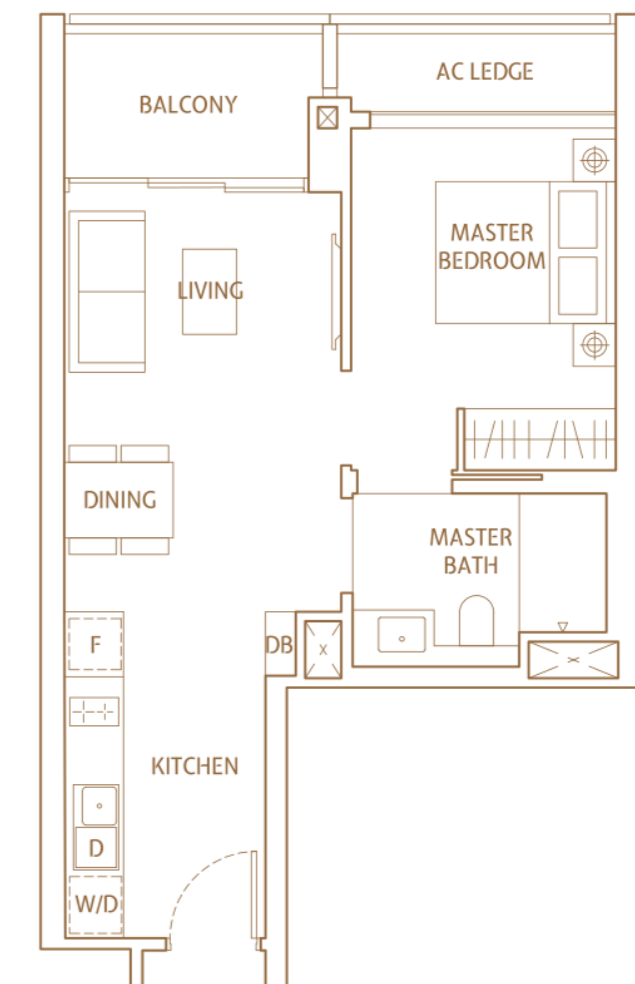
BLOCK 16
#02-57 TO #21-57
#02-59 TO #21-59

MIRRORED

BLOCK 2
#03-05 TO #23-05

BLOCK 4
#02-13 TO #23-13
#02-15 TO #23-15

BLOCK 16
#02-58 TO #21-58

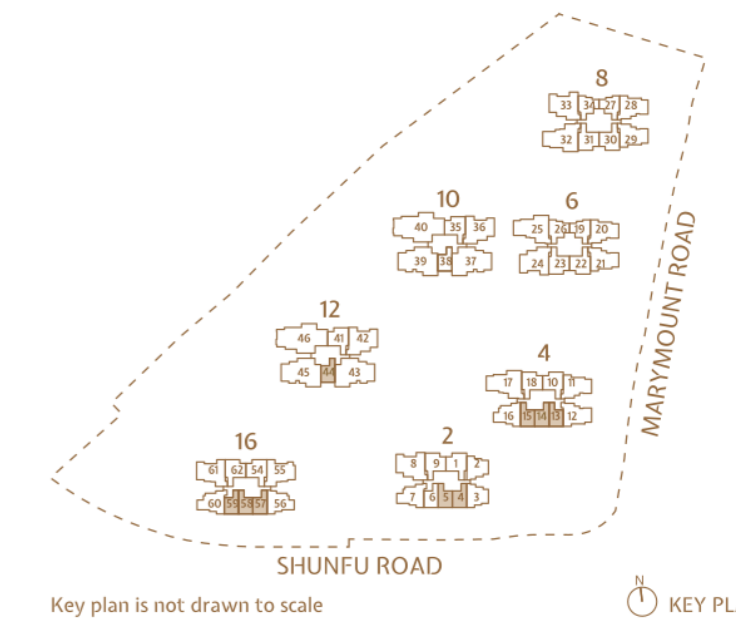


LEGEND

- W/D WASHER CUM DRYER
- D DISHWASHER
- F INTEGRATED FRIDGE

NOTE
FOR INFORMATION OF VARYING LENGTH OF DIVIDING WALL BETWEEN ADJACENT UNITS AND/OR FACADE FEATURES VISIBLE TO UNITS, WHERE APPLICABLE, AND NOT DEPICTED IN THE UNIT FLOOR PLAN, PLEASE REFER TO THE RESPECTIVE BLOCK PLAN(S).

AREA INCLUDES A/C LEDGE, BALCONY AND PRIVATE ENCLOSED SPACE (PES) WHERE APPLICABLE. THE ABOVE PLANS AND ILLUSTRATIONS ARE SUBJECT TO CHANGE AS MAYBE REQUIRED OR APPROVED BY THE RELEVANT AUTHORITIES. ALL FLOOR AREAS ARE APPROXIMATE ONLY AND SUBJECT TO FINAL SURVEY. PLEASE REFER TO THE KEY PLAN FOR ORIENTATION.



Key plan is not drawn to scale

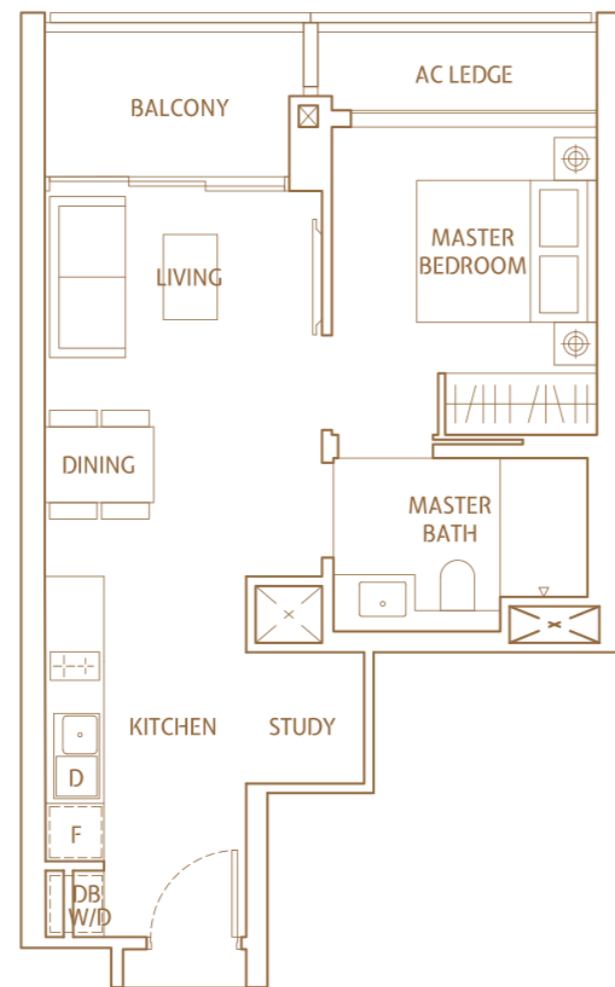
KEY PLAN

1 Bedroom + Study

Type ASa

527 sqft (49 sqm)

BLOCK 2
#03-06 TO #23-06



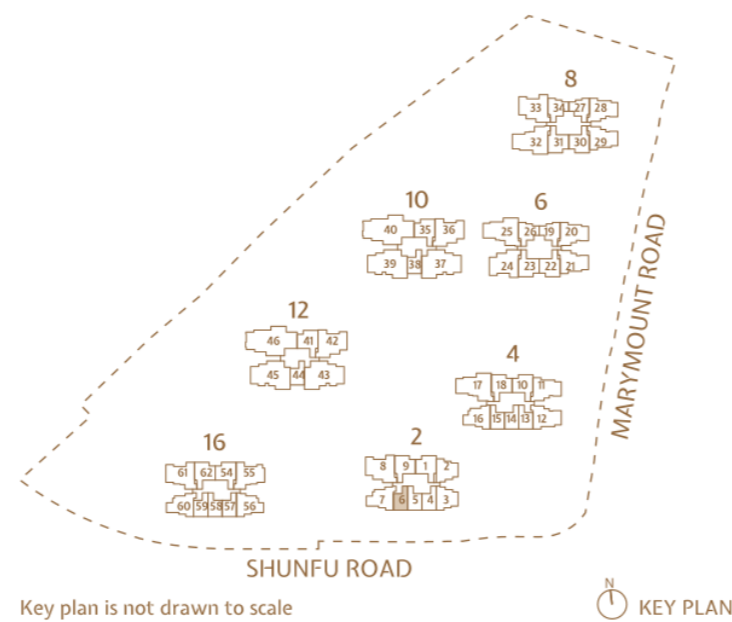
LEGEND

W/D: WASHER CUM DRYER D: DISHWASHER F: INTEGRATED FRIDGE

NOTE

FOR INFORMATION OF VARYING LENGTH OF DIVIDING WALL BETWEEN ADJACENT UNITS AND/OR FACADE FEATURES VISIBLE TO UNITS, WHERE APPLICABLE, AND NOT DEPICTED IN THE UNIT FLOOR PLAN, PLEASE REFER TO THE RESPECTIVE BLOCK PLAN(S).

AREA INCLUDES A/C LEDGE, BALCONY AND PRIVATE ENCLOSED SPACE (PES) WHERE APPLICABLE. THE ABOVE PLANS AND ILLUSTRATIONS ARE SUBJECT TO CHANGE AS MAYBE REQUIRED OR APPROVED BY THE RELEVANT AUTHORITIES. ALL FLOOR AREAS ARE APPROXIMATE ONLY AND SUBJECT TO FINAL SURVEY. PLEASE REFER TO THE KEY PLAN FOR ORIENTATION.

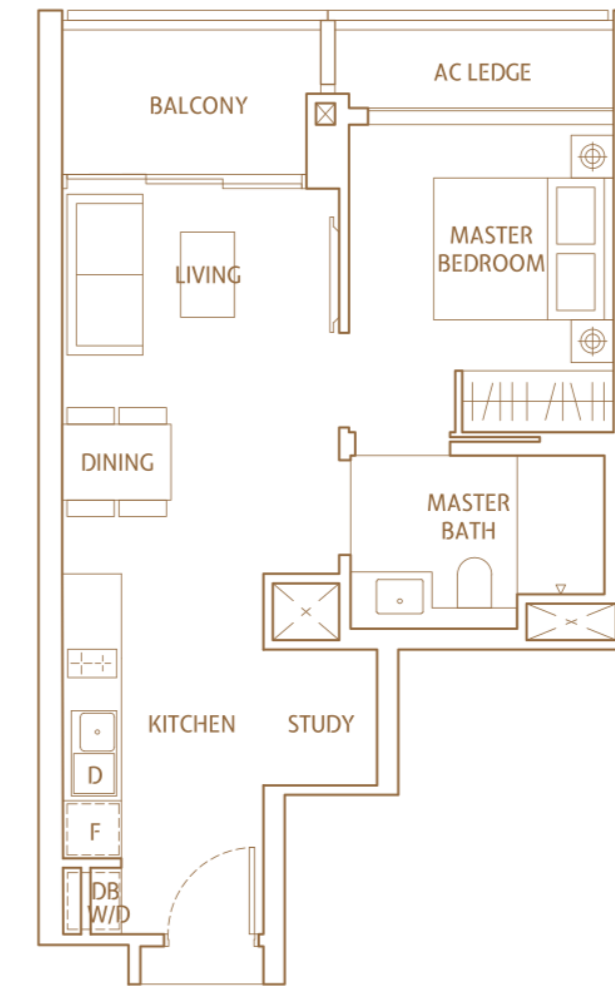


1 Bedroom + Study

Type ASb

527 sqft (49 sqm)

BLOCK 10
#02-38 TO #21-38



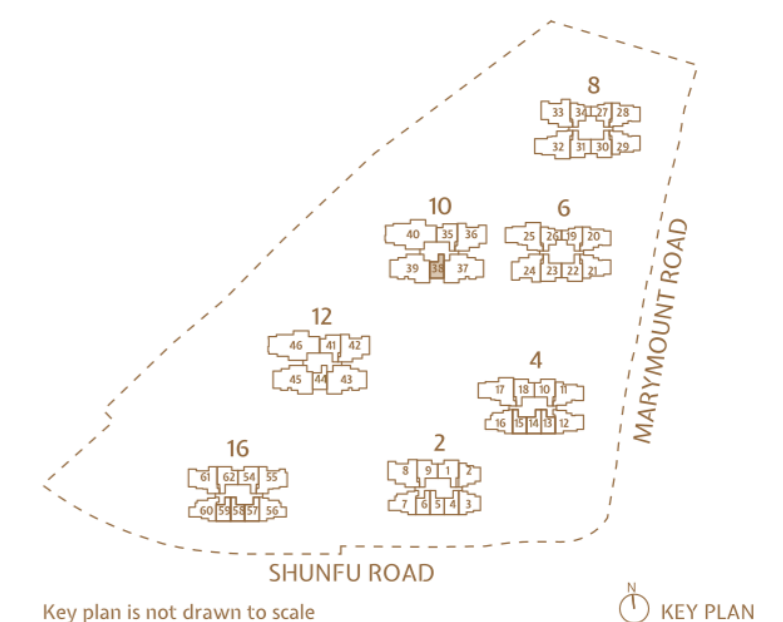
LEGEND

W/D: WASHER CUM DRYER D: DISHWASHER F: INTEGRATED FRIDGE

NOTE

FOR INFORMATION OF VARYING LENGTH OF DIVIDING WALL BETWEEN ADJACENT UNITS AND/OR FACADE FEATURES VISIBLE TO UNITS, WHERE APPLICABLE, AND NOT DEPICTED IN THE UNIT FLOOR PLAN, PLEASE REFER TO THE RESPECTIVE BLOCK PLAN(S).

AREA INCLUDES A/C LEDGE, BALCONY AND PRIVATE ENCLOSED SPACE (PES) WHERE APPLICABLE. THE ABOVE PLANS AND ILLUSTRATIONS ARE SUBJECT TO CHANGE AS MAYBE REQUIRED OR APPROVED BY THE RELEVANT AUTHORITIES. ALL FLOOR AREAS ARE APPROXIMATE ONLY AND SUBJECT TO FINAL SURVEY. PLEASE REFER TO THE KEY PLAN FOR ORIENTATION.





2 Bedroom

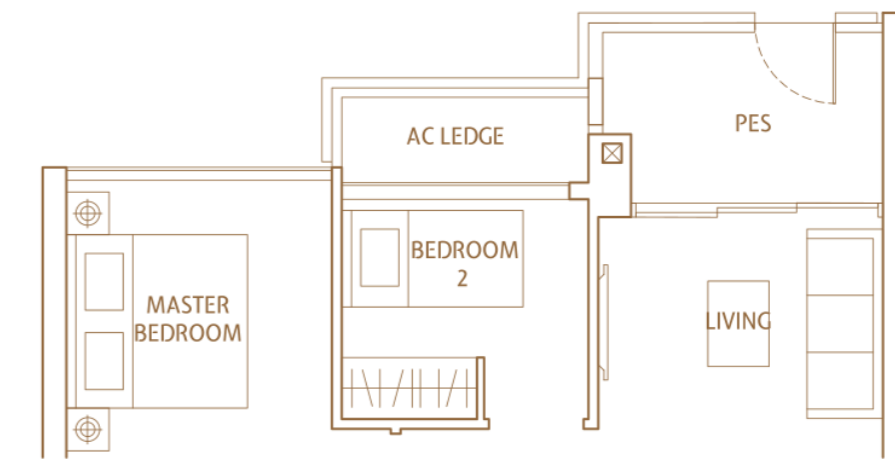
Type B1(P)

646 sqft (60 sqm)

BLOCK 8
#01-27

MIRRORED

BLOCK 8
#01-34



Type B1

646 sqft (60 sqm)

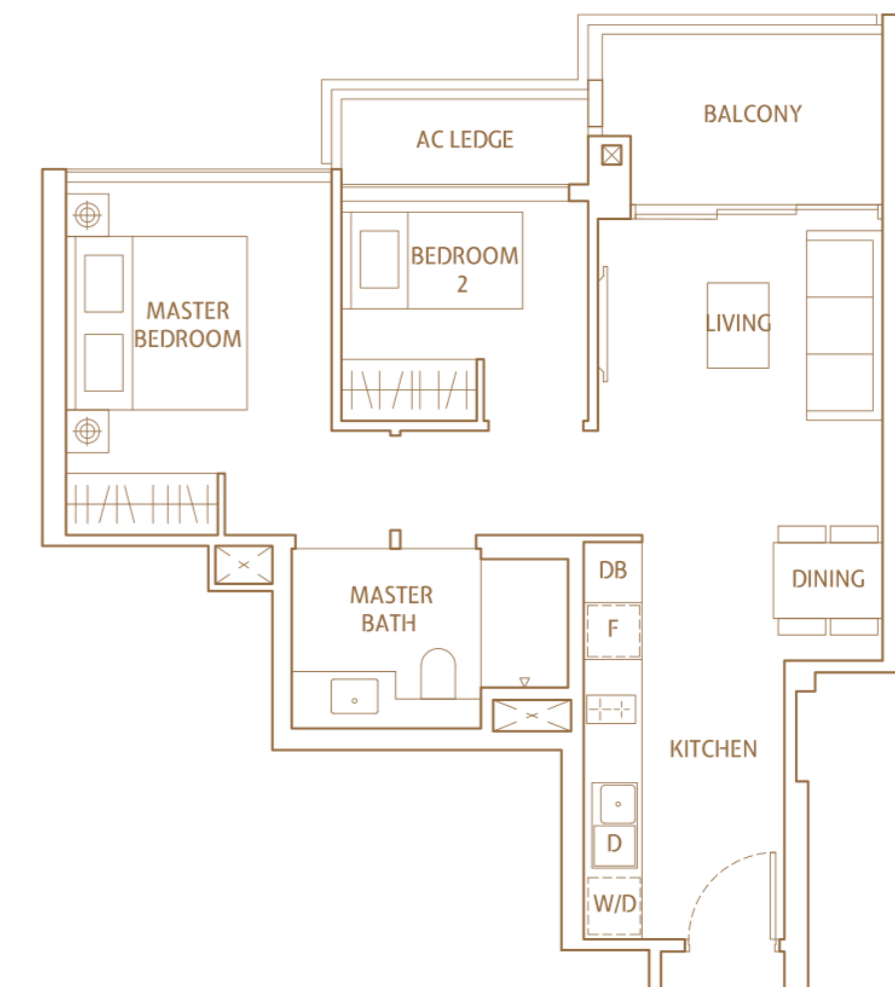
BLOCK 6
#02-19 TO #23-19

MIRRORED

BLOCK 6
#02-26 TO #23-26

BLOCK 8
#02-27 TO #23-27

BLOCK 8
#02-34 TO #23-34



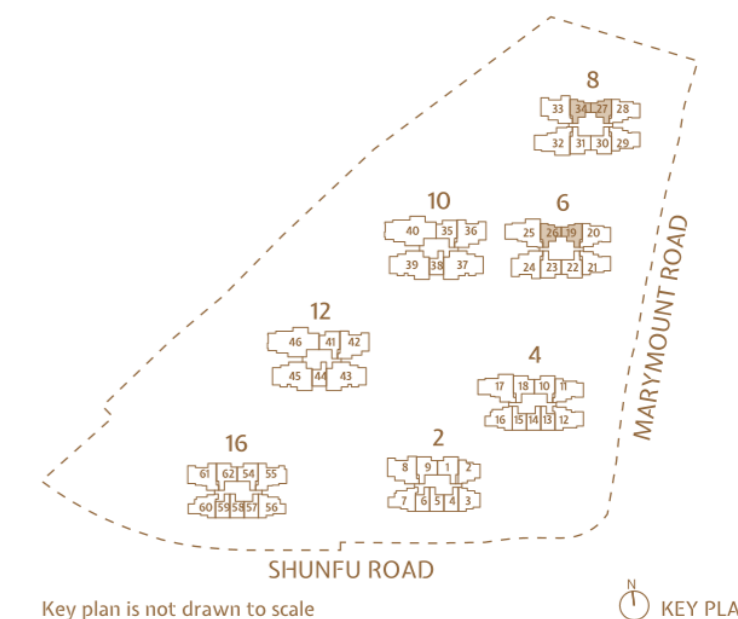
LEGEND

W/D WASHER CUM DRYER D DISHWASHER F INTEGRATED FRIDGE

NOTE

FOR INFORMATION OF VARYING LENGTH OF DIVIDING WALL BETWEEN ADJACENT UNITS AND/OR FACADE FEATURES VISIBLE TO UNITS, WHERE APPLICABLE, AND NOT DEPICTED IN THE UNIT FLOOR PLAN, PLEASE REFER TO THE RESPECTIVE BLOCK PLAN(S).

AREA INCLUDES A/C LEDGE, BALCONY AND PRIVATE ENCLOSED SPACE (PES) WHERE APPLICABLE. THE ABOVE PLANS AND ILLUSTRATIONS ARE SUBJECT TO CHANGE AS MAYBE REQUIRED OR APPROVED BY THE RELEVANT AUTHORITIES. ALL FLOOR AREAS ARE APPROXIMATE ONLY AND SUBJECT TO FINAL SURVEY. PLEASE REFER TO THE KEY PLAN FOR ORIENTATION.



Key plan is not drawn to scale

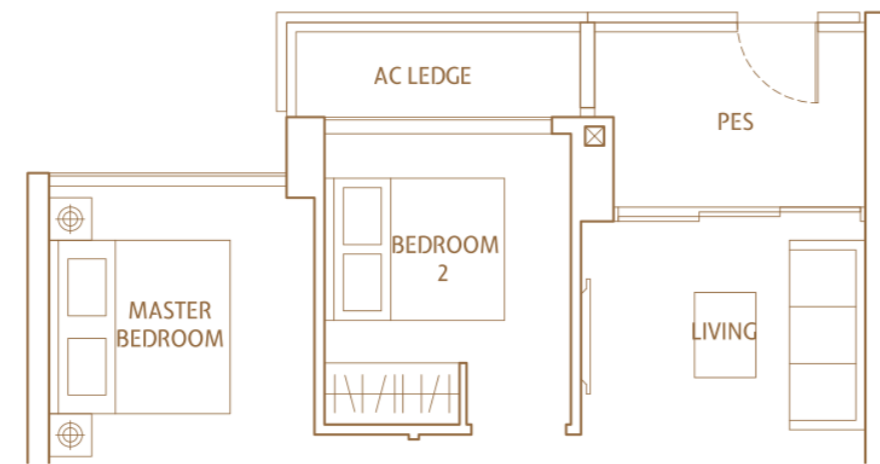
KEY PLAN

2 Bedroom Deluxe

Type B2(P)

764 sqft (71 sqm)

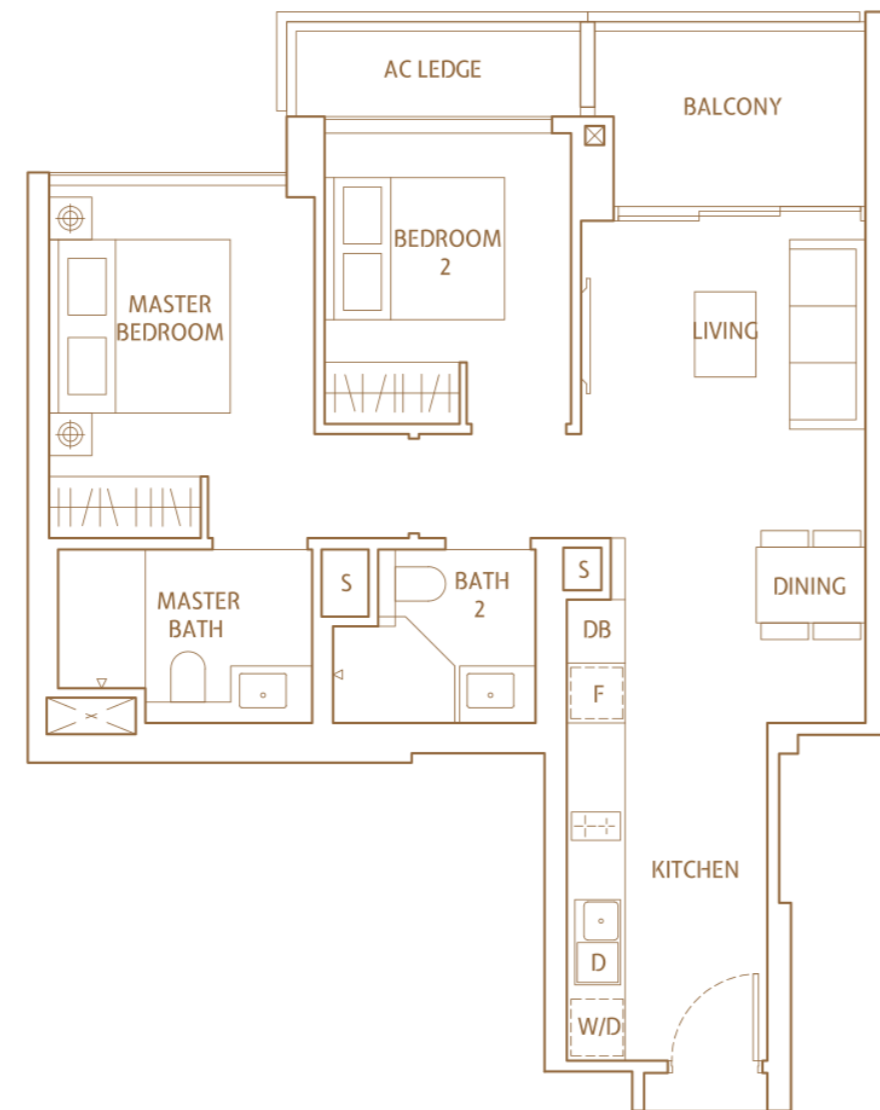
	MIRRORED
BLOCK 2 #01-01	BLOCK 2 #01-09
BLOCK 4 #01-10	BLOCK 4 #01-18
BLOCK 6 #01-23	BLOCK 6 #01-22
BLOCK 8 #01-31	BLOCK 8 #01-30
BLOCK 16 #01-54	BLOCK 16 #01-62



Type B2

764 sqft (71 sqm)

	MIRRORED
BLOCK 2 #02-01 TO #23-01	BLOCK 2 #02-09 TO #23-09
BLOCK 4 #02-10 TO #23-10	BLOCK 4 #02-18 TO #23-18
BLOCK 6 #02-23 TO #23-23	BLOCK 6 #02-22 TO #23-22
BLOCK 8 #02-31 TO #23-31	BLOCK 8 #02-30 TO #23-30
BLOCK 10 #02-35 TO #22-35	
BLOCK 12 #02-41 TO #23-41	
BLOCK 16 #02-54 TO #21-54	BLOCK 16 #02-62 TO #21-62

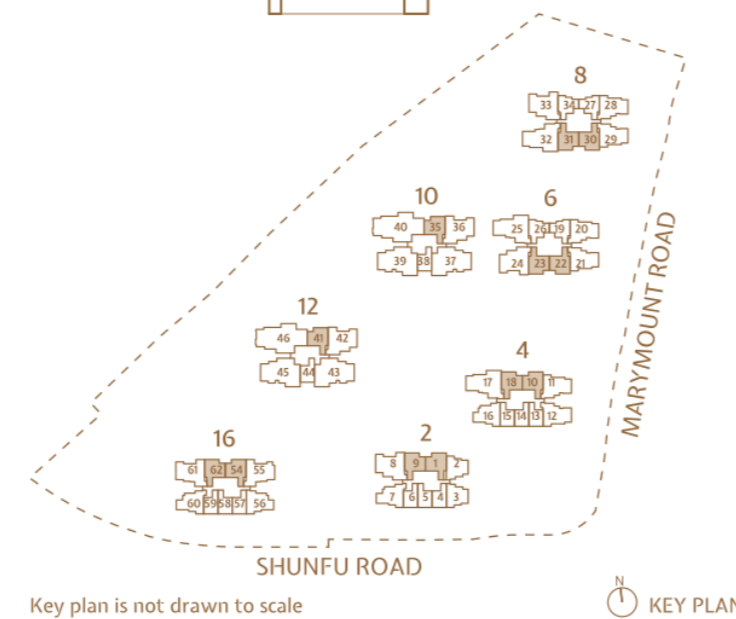


LEGEND

W/D	WASHER CUM DRYER	D	DISHWASHER	F	INTEGRATED FRIDGE
S	SERVICE SHAFT EXCLUDED FROM STRATA AREA				

NOTE
FOR INFORMATION OF VARYING LENGTH OF DIVIDING WALL BETWEEN ADJACENT UNITS AND/OR FACADE FEATURES VISIBLE TO UNITS, WHERE APPLICABLE, AND NOT DEPICTED IN THE UNIT FLOOR PLAN, PLEASE REFER TO THE RESPECTIVE BLOCK PLAN(S).

AREA INCLUDES A/C LEDGE, BALCONY AND PRIVATE ENCLOSED SPACE (PES) WHERE APPLICABLE. THE ABOVE PLANS AND ILLUSTRATIONS ARE SUBJECT TO CHANGE AS MAYBE REQUIRED OR APPROVED BY THE RELEVANT AUTHORITIES. ALL FLOOR AREAS ARE APPROXIMATE ONLY AND SUBJECT TO FINAL SURVEY. PLEASE REFER TO THE KEY PLAN FOR ORIENTATION.

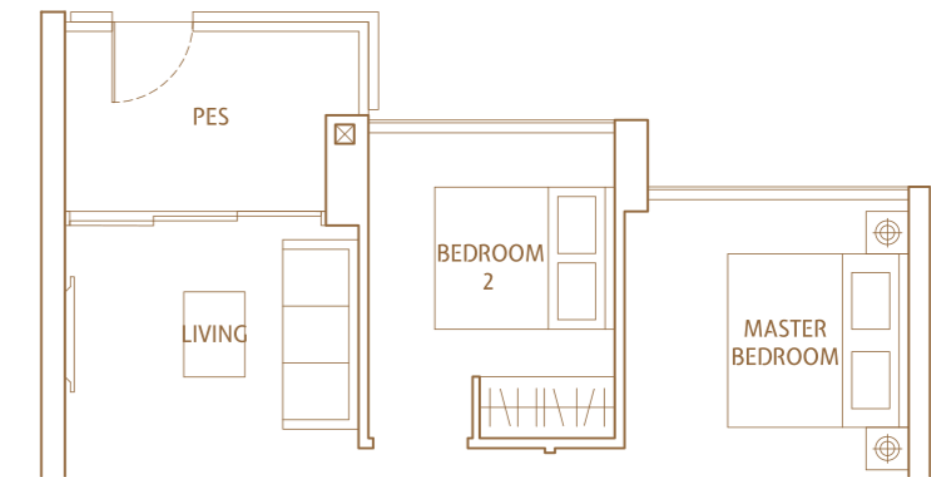


2 Bedroom Premium

Type B3(P)

775 sqft (72 sqm)

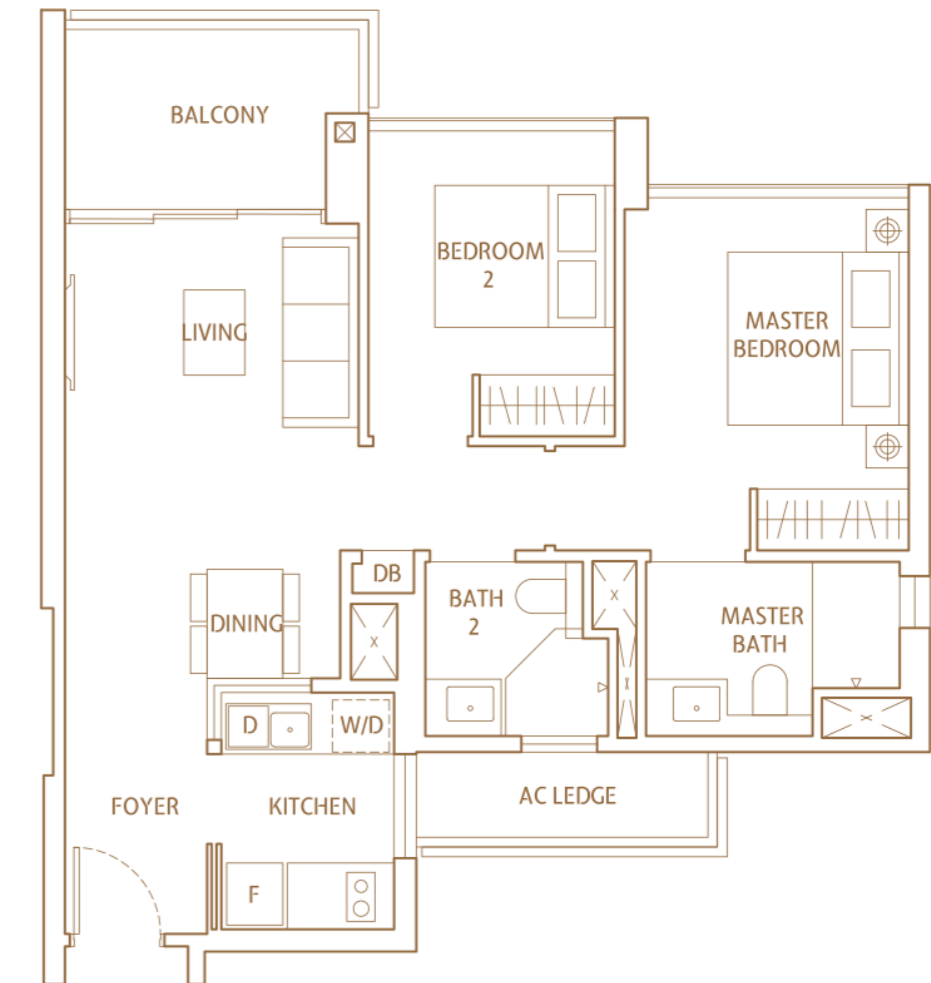
BLOCK 2
#01-02



Type B3

775 sqft (72 sqm)

	MIRRORED
BLOCK 2 #02-02 TO #23-02	BLOCK 2 #03-03 TO #23-03

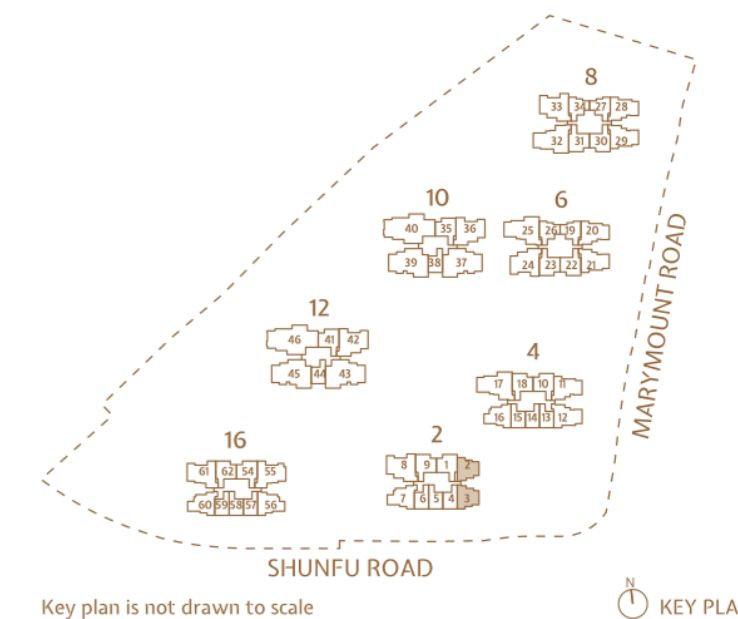


LEGEND

W/D	WASHER CUM DRYER	D	DISHWASHER	F	FRIDGE
-----	------------------	---	------------	---	--------

NOTE
FOR INFORMATION OF VARYING LENGTH OF DIVIDING WALL BETWEEN ADJACENT UNITS AND/OR FACADE FEATURES VISIBLE TO UNITS, WHERE APPLICABLE, AND NOT DEPICTED IN THE UNIT FLOOR PLAN, PLEASE REFER TO THE RESPECTIVE BLOCK PLAN(S).

AREA INCLUDES A/C LEDGE, BALCONY AND PRIVATE ENCLOSED SPACE (PES) WHERE APPLICABLE. THE ABOVE PLANS AND ILLUSTRATIONS ARE SUBJECT TO CHANGE AS MAYBE REQUIRED OR APPROVED BY THE RELEVANT AUTHORITIES. ALL FLOOR AREAS ARE APPROXIMATE ONLY AND SUBJECT TO FINAL SURVEY. PLEASE REFER TO THE KEY PLAN FOR ORIENTATION.



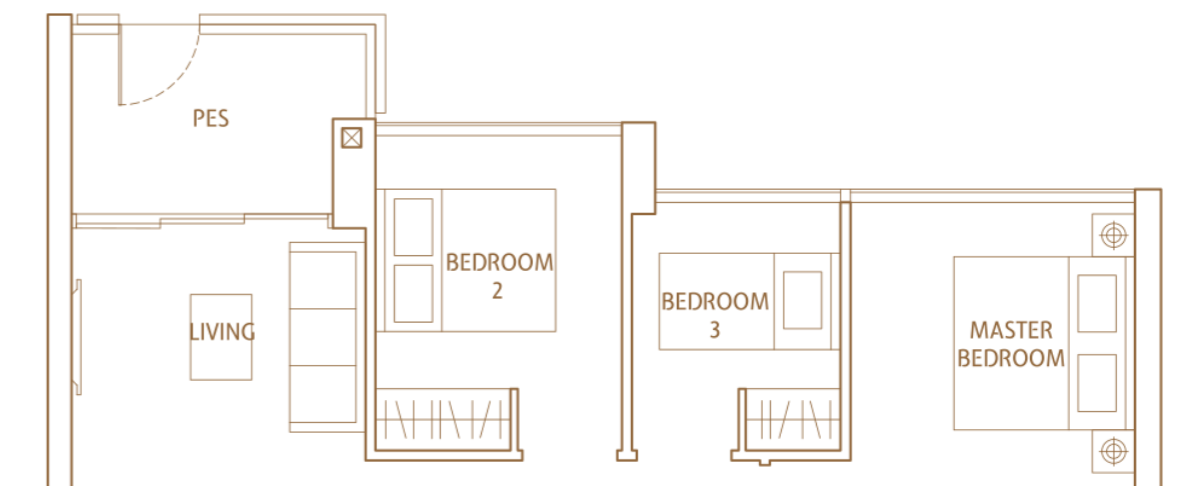


3 Bedroom

Type C1a(P)

904 sqft (84 sqm)

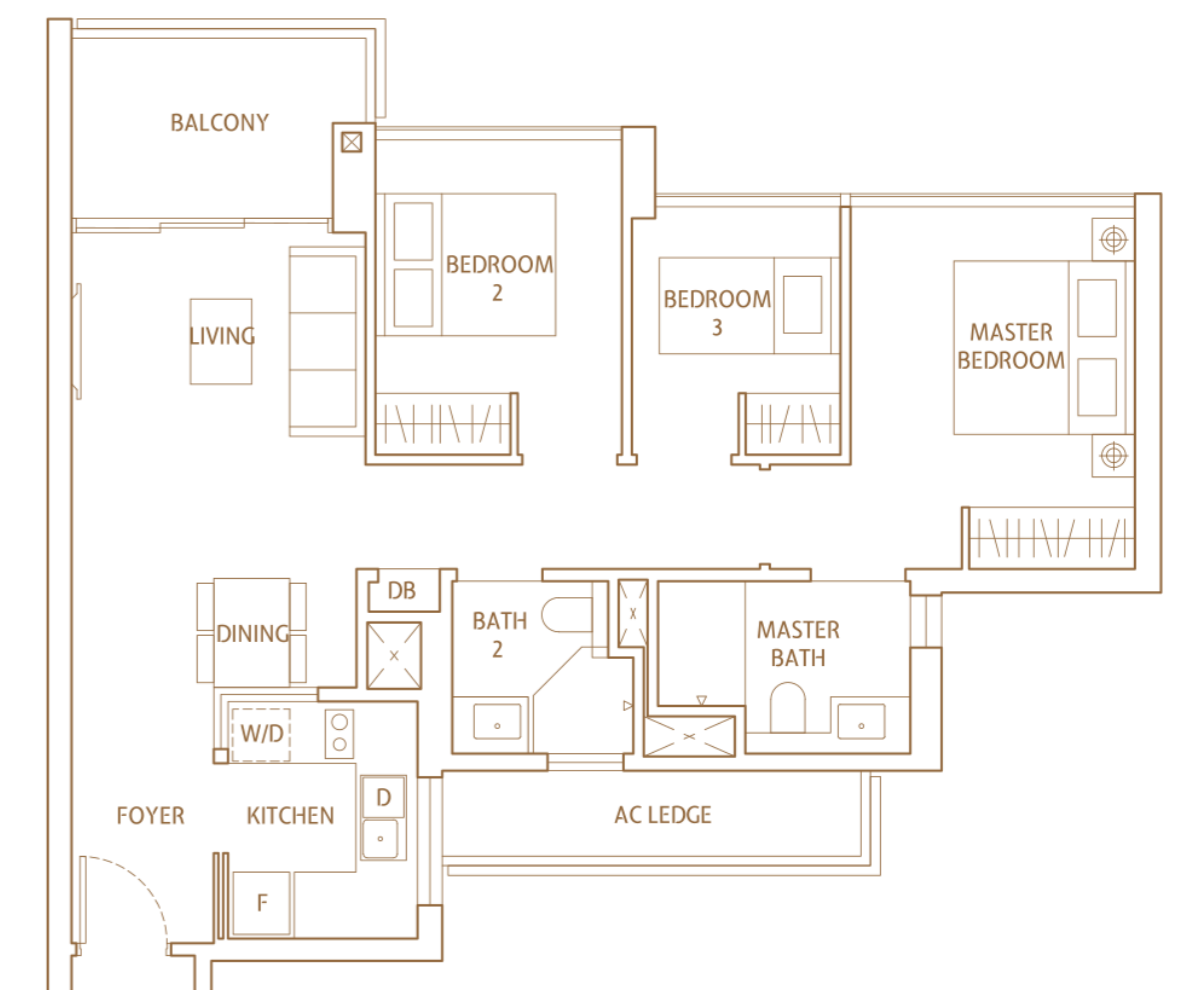
	MIRRORED
BLOCK 4 #01-16	BLOCK 16 #01-56



Type C1a

904 sqft (84 sqm)

	MIRRORED
BLOCK 4 #02-16 TO #23-16	BLOCK 16 #02-56 TO #21-56



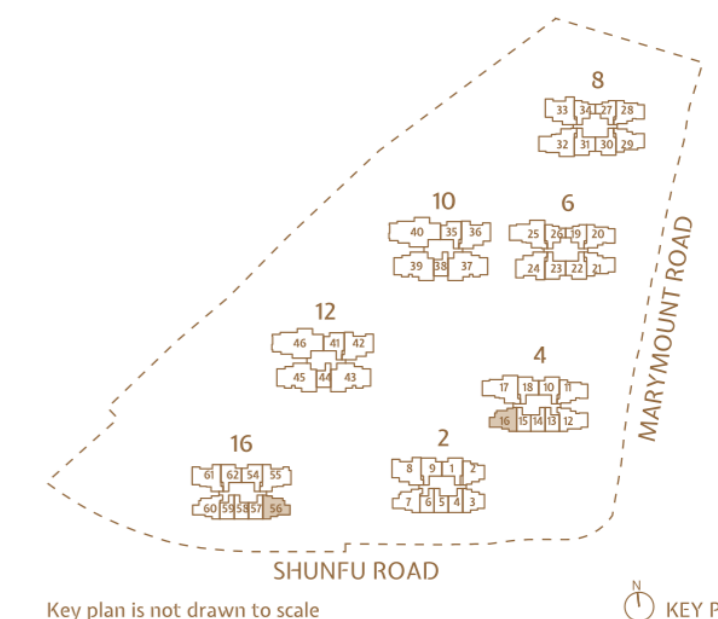
LEGEND

W/D WASHER CUM DRYER
 D DISHWASHER
 F FRIDGE

NOTE

FOR INFORMATION OF VARYING LENGTH OF DIVIDING WALL BETWEEN ADJACENT UNITS AND/OR FACADE FEATURES VISIBLE TO UNITS, WHERE APPLICABLE, AND NOT DEPICTED IN THE UNIT FLOOR PLAN, PLEASE REFER TO THE RESPECTIVE BLOCK PLAN(S).

AREA INCLUDES A/C LEDGE, BALCONY AND PRIVATE ENCLOSED SPACE (PES) WHERE APPLICABLE. THE ABOVE PLANS AND ILLUSTRATIONS ARE SUBJECT TO CHANGE AS MAYBE REQUIRED OR APPROVED BY THE RELEVANT AUTHORITIES. ALL FLOOR AREAS ARE APPROXIMATE ONLY AND SUBJECT TO FINAL SURVEY. PLEASE REFER TO THE KEY PLAN FOR ORIENTATION.



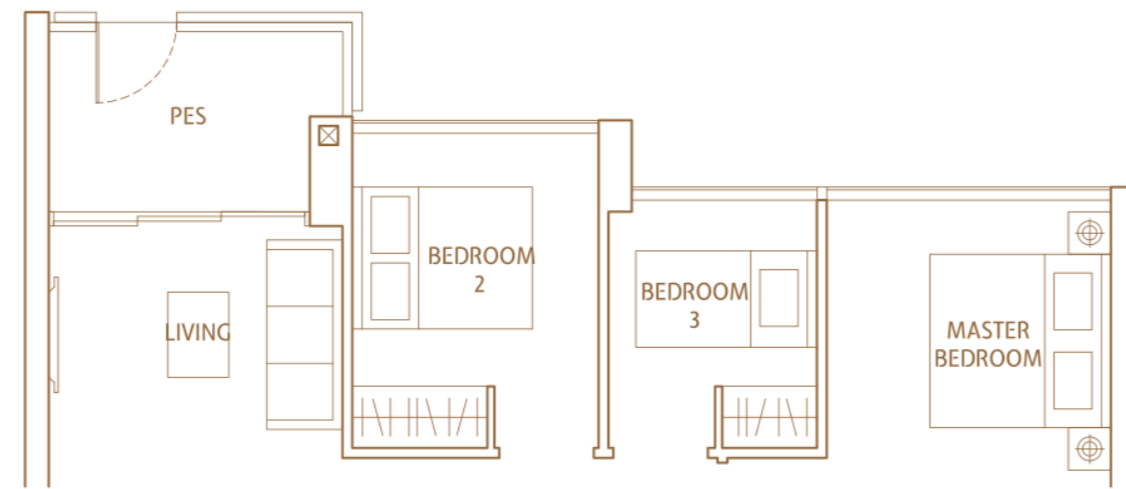
KEY PLAN

3 Bedroom

Type C1b(P)

904 sqft (84 sqm)

BLOCK 16
#01-60

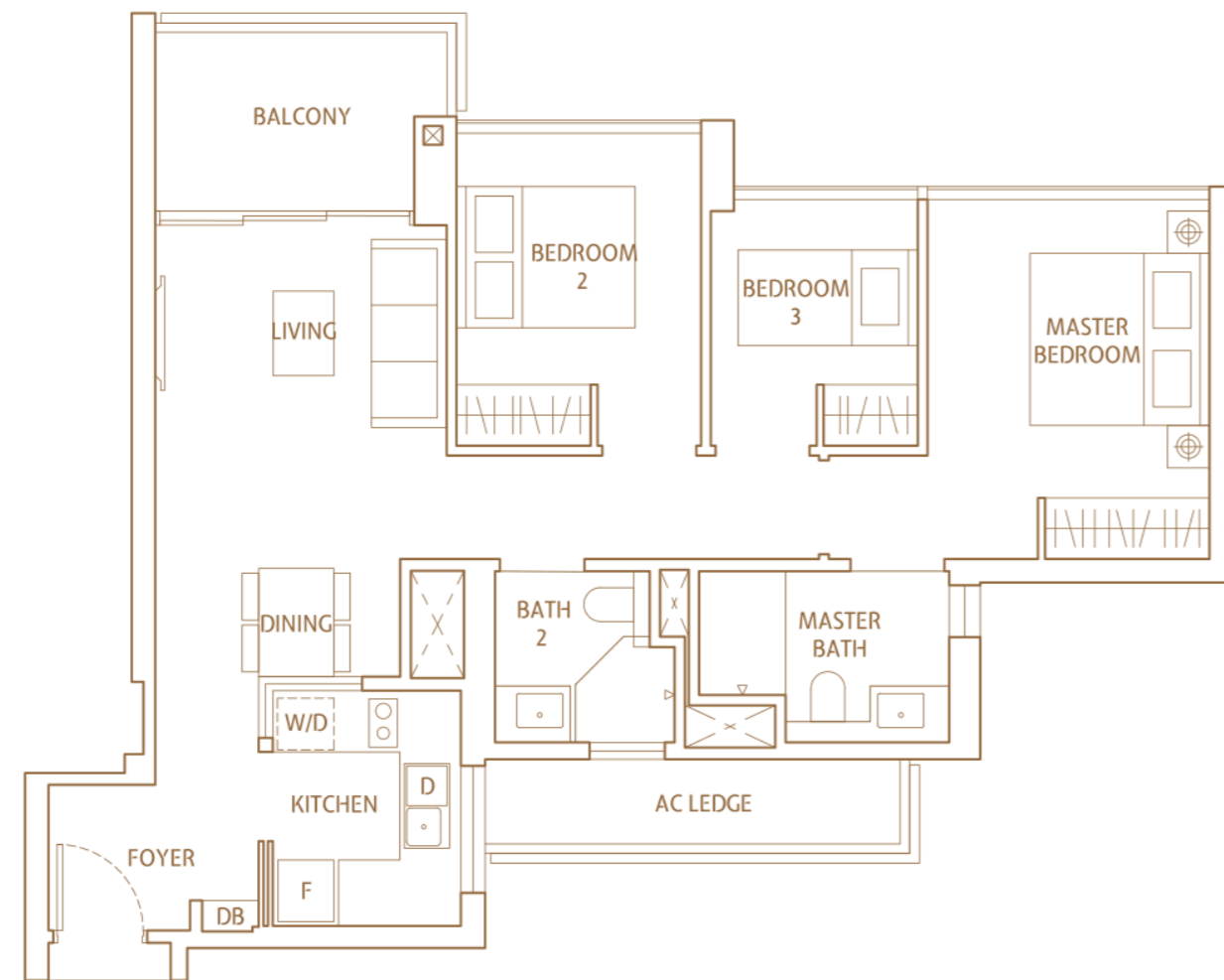


Type C1b

904 sqft (84 sqm)

BLOCK 2
#03-07 TO #23-07

BLOCK 16
#02-60 TO #21-60



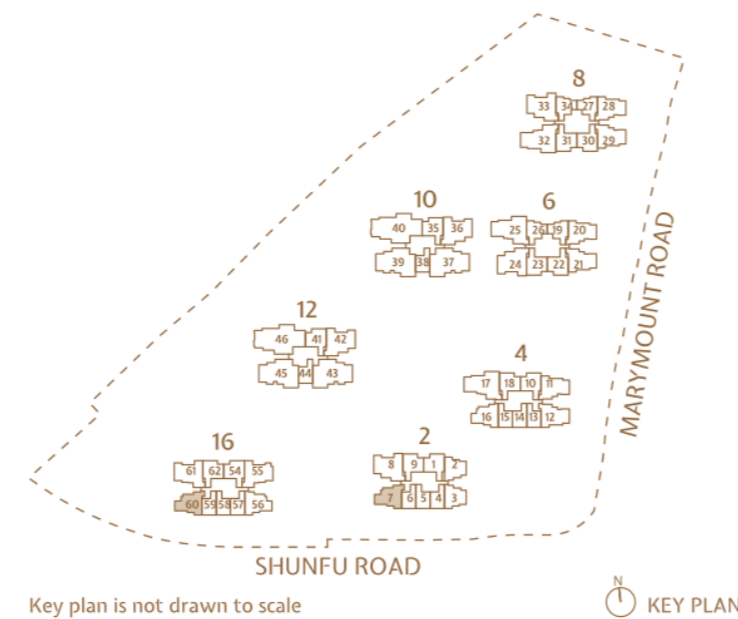
LEGEND

W/D WASHER CUM DRYER D DISHWASHER F FRIDGE

NOTE

FOR INFORMATION OF VARYING LENGTH OF DIVIDING WALL BETWEEN ADJACENT UNITS AND/OR FACADE FEATURES VISIBLE TO UNITS, WHERE APPLICABLE, AND NOT DEPICTED IN THE UNIT FLOOR PLAN, PLEASE REFER TO THE RESPECTIVE BLOCK PLAN(S).

AREA INCLUDES A/C LEDGE, BALCONY AND PRIVATE ENCLOSED SPACE (PES) WHERE APPLICABLE. THE ABOVE PLANS AND ILLUSTRATIONS ARE SUBJECT TO CHANGE AS MAYBE REQUIRED OR APPROVED BY THE RELEVANT AUTHORITIES. ALL FLOOR AREAS ARE APPROXIMATE ONLY AND SUBJECT TO FINAL SURVEY. PLEASE REFER TO THE KEY PLAN FOR ORIENTATION.



3 Bedroom Deluxe

Type C2a(P)

1012 sqft (94 sqm)

BLOCK 4
#01-11

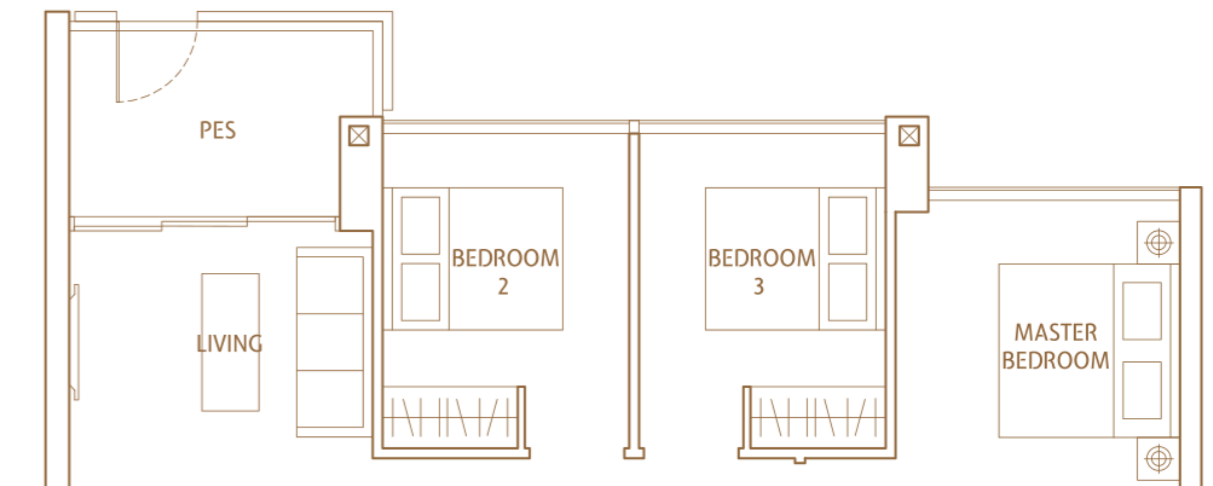
BLOCK 8
#01-28

MIRRORED

BLOCK 4
#01-12

BLOCK 6
#01-21

BLOCK 8
#01-29



Type C2a

1012 sqft (94 sqm)

BLOCK 4
#02-11 TO #09-11

BLOCK 6
#02-20 TO #09-20

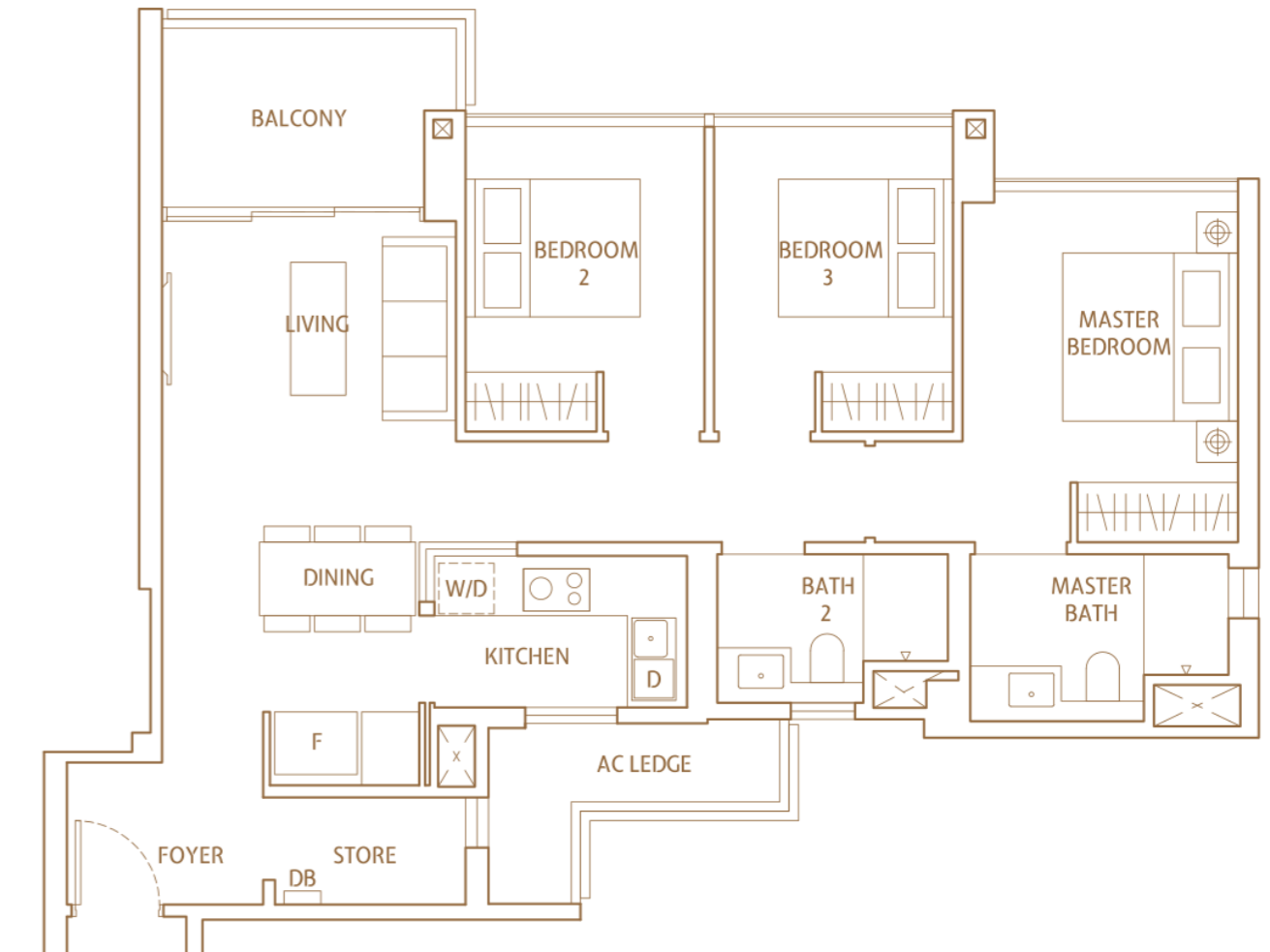
BLOCK 8
#02-28 TO #09-28

MIRRORED

BLOCK 4
#02-12 TO #09-12

BLOCK 6
#02-21 TO #09-21

BLOCK 8
#02-29 TO #09-29



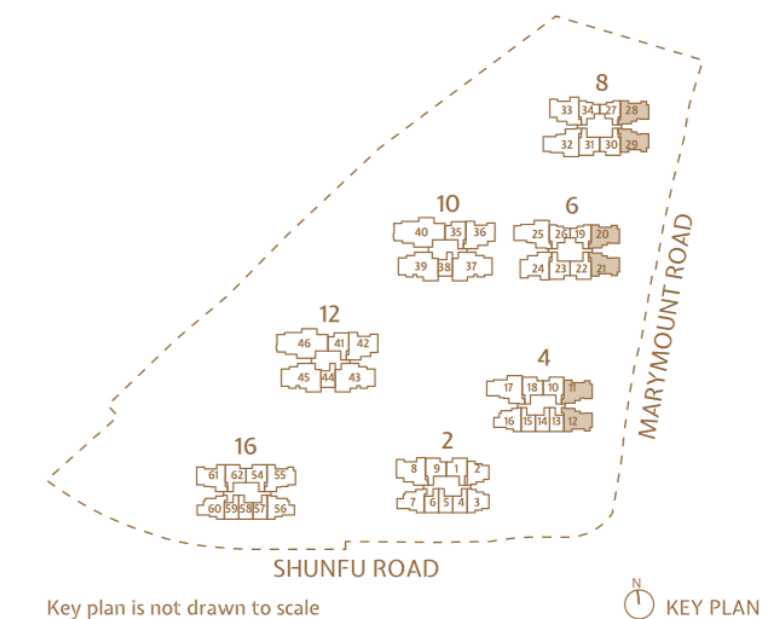
LEGEND

W/D WASHER CUM DRYER D DISHWASHER F FRIDGE

NOTE

FOR INFORMATION OF VARYING LENGTH OF DIVIDING WALL BETWEEN ADJACENT UNITS AND/OR FACADE FEATURES VISIBLE TO UNITS, WHERE APPLICABLE, AND NOT DEPICTED IN THE UNIT FLOOR PLAN, PLEASE REFER TO THE RESPECTIVE BLOCK PLAN(S).

AREA INCLUDES A/C LEDGE, BALCONY AND PRIVATE ENCLOSED SPACE (PES) WHERE APPLICABLE. THE ABOVE PLANS AND ILLUSTRATIONS ARE SUBJECT TO CHANGE AS MAYBE REQUIRED OR APPROVED BY THE RELEVANT AUTHORITIES. ALL FLOOR AREAS ARE APPROXIMATE ONLY AND SUBJECT TO FINAL SURVEY. PLEASE REFER TO THE KEY PLAN FOR ORIENTATION.



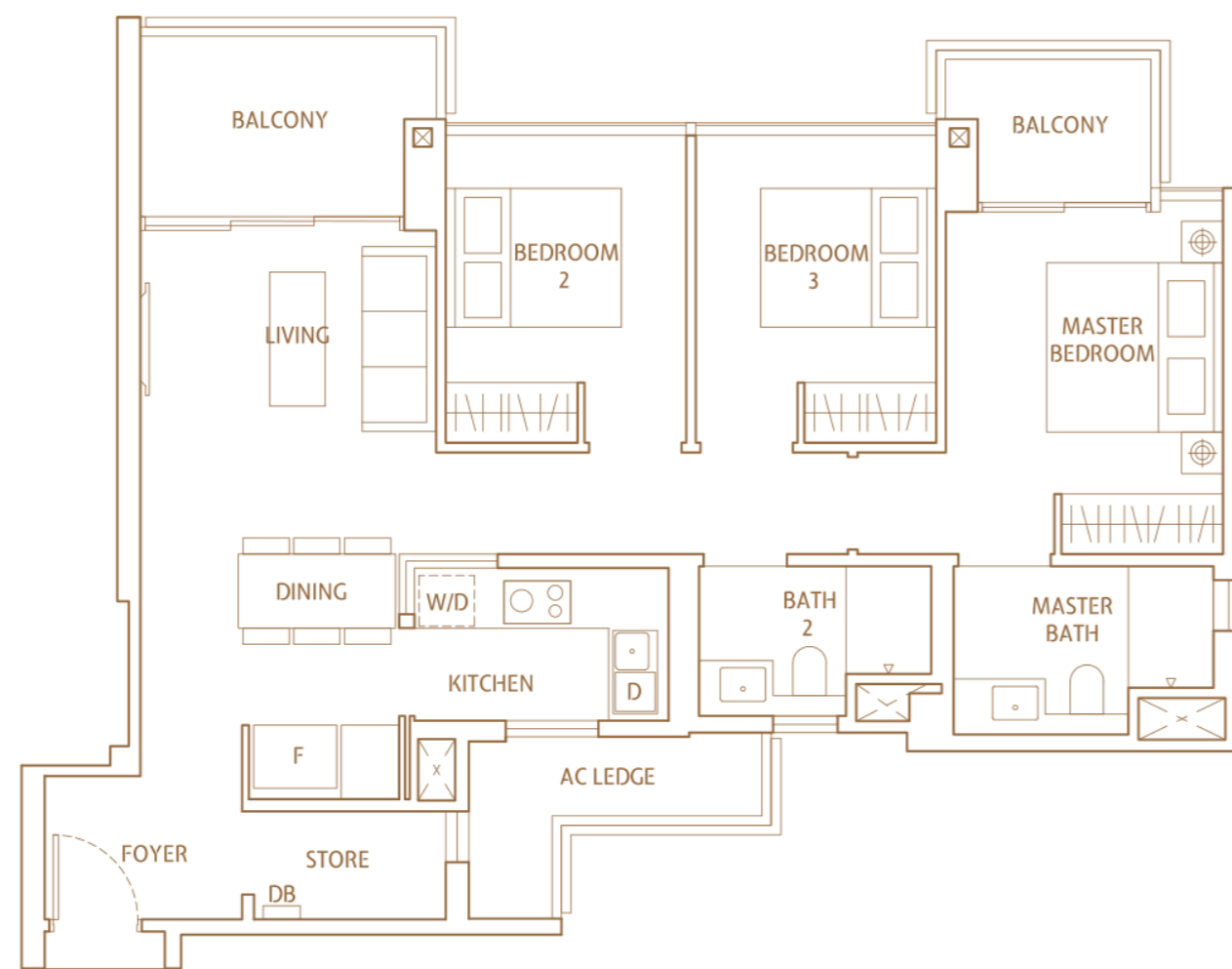
3 Bedroom Deluxe

Type C2b

1055 sqft (98 sqm)

MIRRORED

BLOCK 4 #10-11 TO #23-11	BLOCK 4 #10-12 TO #23-12
BLOCK 6 #10-20 TO #23-20	BLOCK 6 #10-21 TO #23-21
BLOCK 8 #10-28 TO #23-28	BLOCK 8 #10-29 TO #23-29

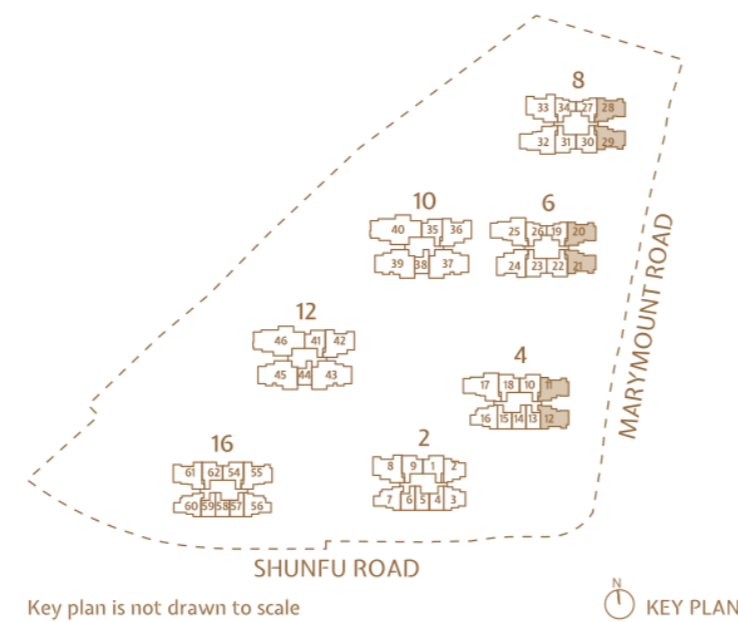


LEGEND

W/D WASHER CUM DRYER	D DISHWASHER	F FRIDGE
----------------------	--------------	----------

NOTE
FOR INFORMATION OF VARYING LENGTH OF DIVIDING WALL BETWEEN ADJACENT UNITS AND/OR FACADE FEATURES VISIBLE TO UNITS, WHERE APPLICABLE, AND NOT DEPICTED IN THE UNIT FLOOR PLAN, PLEASE REFER TO THE RESPECTIVE BLOCK PLAN(S).

AREA INCLUDES A/C LEDGE, BALCONY AND PRIVATE ENCLOSED SPACE (PES) WHERE APPLICABLE. THE ABOVE PLANS AND ILLUSTRATIONS ARE SUBJECT TO CHANGE AS MAYBE REQUIRED OR APPROVED BY THE RELEVANT AUTHORITIES. ALL FLOOR AREAS ARE APPROXIMATE ONLY AND SUBJECT TO FINAL SURVEY. PLEASE REFER TO THE KEY PLAN FOR ORIENTATION.

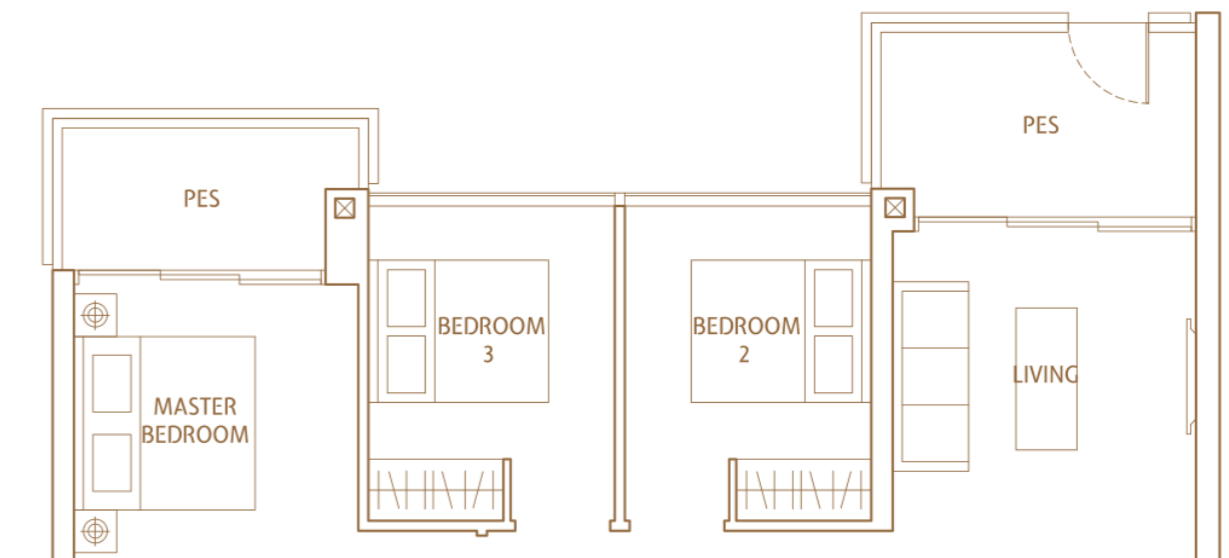


3 Bedroom Premium

Type C3a(P)

1152 sqft (107 sqm)

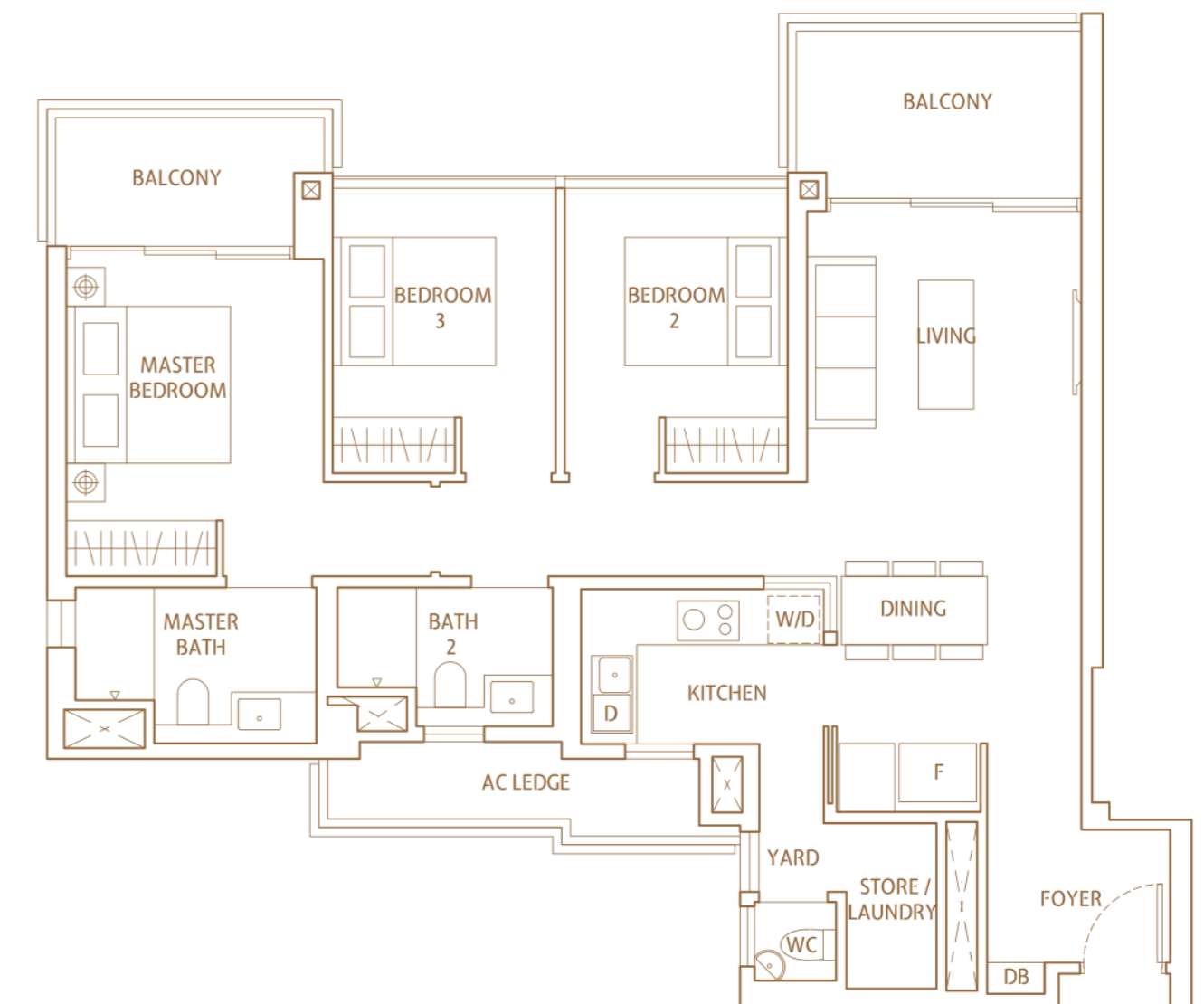
BLOCK 16
#01-61



Type C3a

1152 sqft (107 sqm)

BLOCK 16
#02-61 TO #21-61

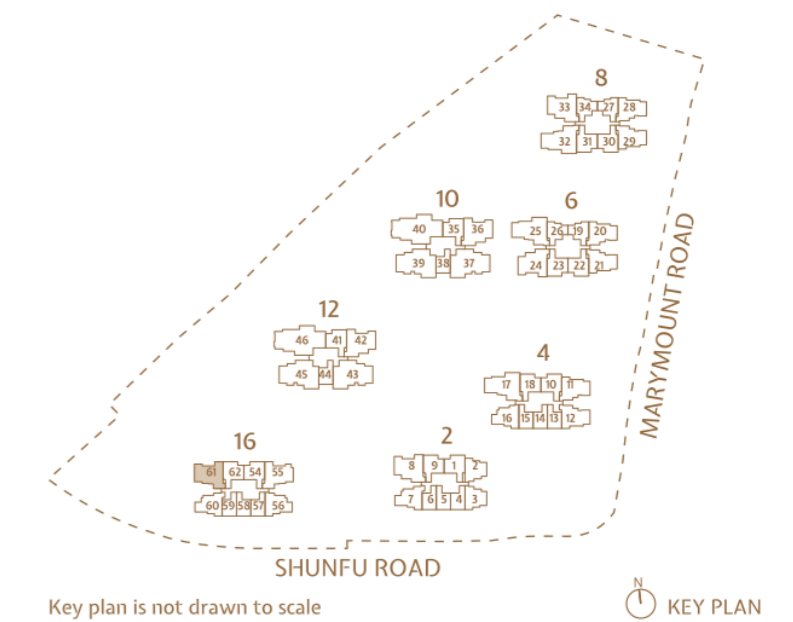


LEGEND

W/D WASHER CUM DRYER	D DISHWASHER	F FRIDGE
----------------------	--------------	----------

NOTE
FOR INFORMATION OF VARYING LENGTH OF DIVIDING WALL BETWEEN ADJACENT UNITS AND/OR FACADE FEATURES VISIBLE TO UNITS, WHERE APPLICABLE, AND NOT DEPICTED IN THE UNIT FLOOR PLAN, PLEASE REFER TO THE RESPECTIVE BLOCK PLAN(S).

AREA INCLUDES A/C LEDGE, BALCONY AND PRIVATE ENCLOSED SPACE (PES) WHERE APPLICABLE. THE ABOVE PLANS AND ILLUSTRATIONS ARE SUBJECT TO CHANGE AS MAYBE REQUIRED OR APPROVED BY THE RELEVANT AUTHORITIES. ALL FLOOR AREAS ARE APPROXIMATE ONLY AND SUBJECT TO FINAL SURVEY. PLEASE REFER TO THE KEY PLAN FOR ORIENTATION.

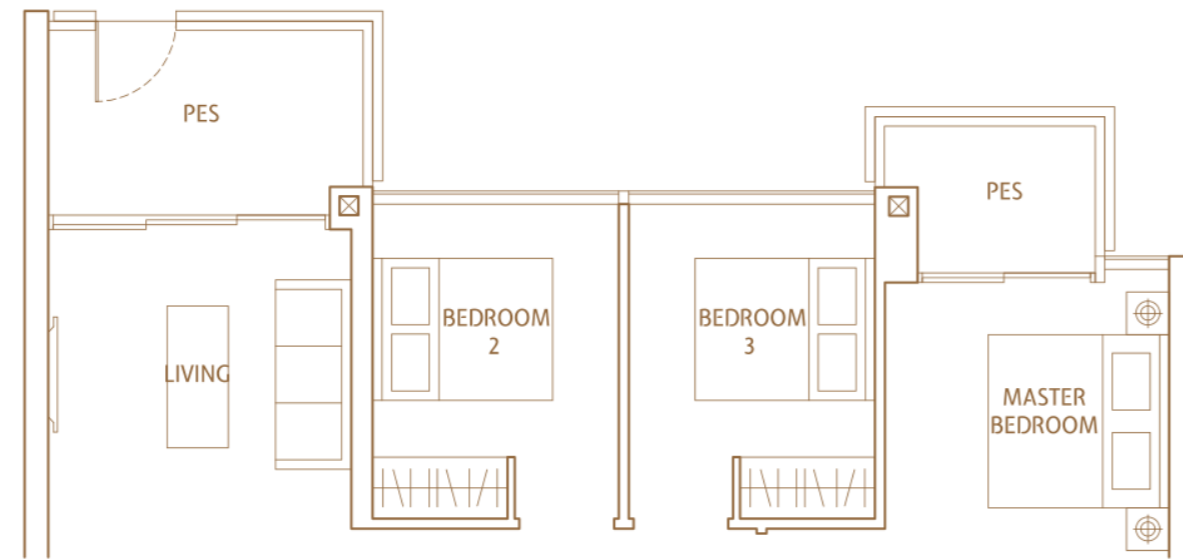


3 Bedroom Premium

Type C3b(P)

1141 sqft (106 sqm)

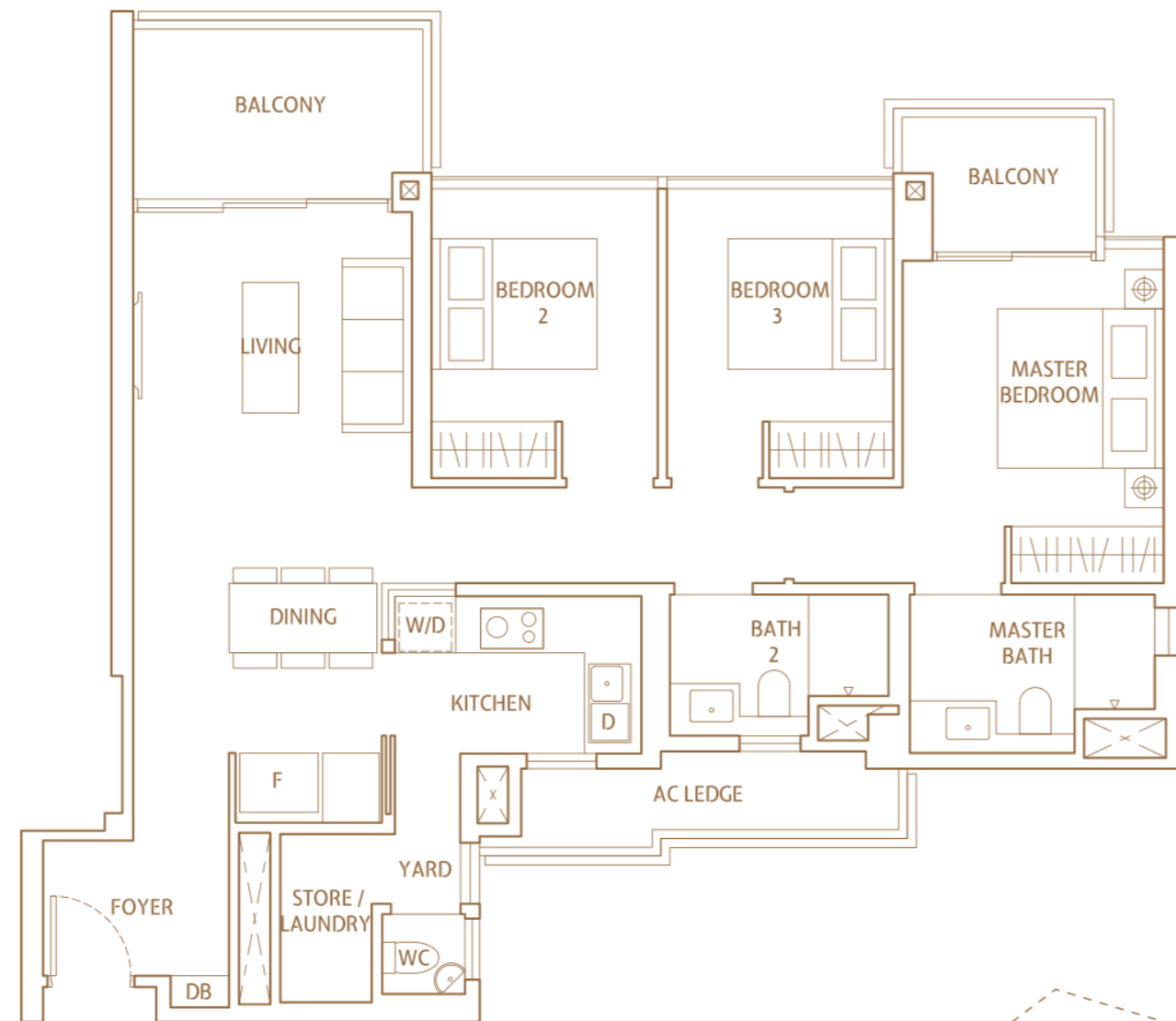
BLOCK 16
#01-55



Type C3b

1141 sqft (106 sqm)

BLOCK 16
#02-55 TO #21-55

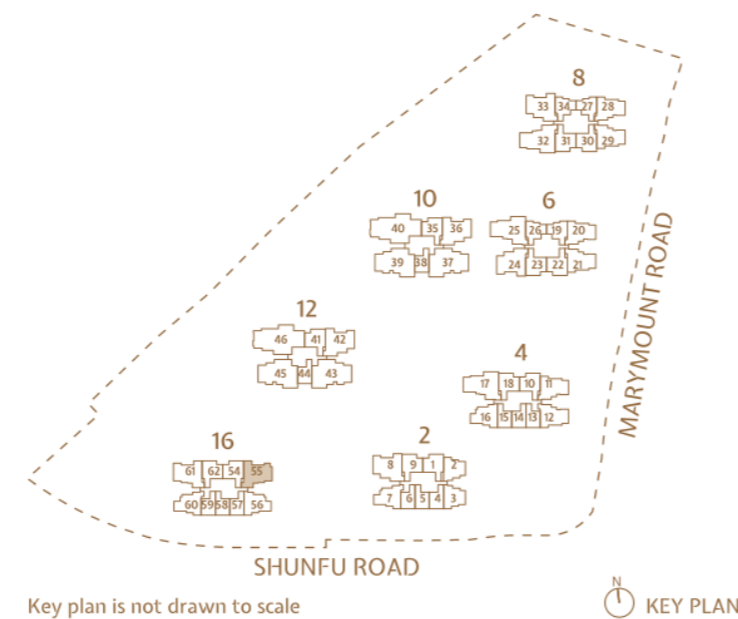


LEGEND

- W/D WASHER CUM DRYER
- D DISHWASHER
- F FRIDGE

NOTE
FOR INFORMATION OF VARYING LENGTH OF DIVIDING WALL BETWEEN ADJACENT UNITS AND/OR FACADE FEATURES VISIBLE TO UNITS, WHERE APPLICABLE, AND NOT DEPICTED IN THE UNIT FLOOR PLAN, PLEASE REFER TO THE RESPECTIVE BLOCK PLAN(S).

AREA INCLUDES A/C LEDGE, BALCONY AND PRIVATE ENCLOSED SPACE (PES) WHERE APPLICABLE. THE ABOVE PLANS AND ILLUSTRATIONS ARE SUBJECT TO CHANGE AS MAYBE REQUIRED OR APPROVED BY THE RELEVANT AUTHORITIES. ALL FLOOR AREAS ARE APPROXIMATE ONLY AND SUBJECT TO FINAL SURVEY. PLEASE REFER TO THE KEY PLAN FOR ORIENTATION.



4 Bedroom

Type D1(P)

1259 sqft (117 sqm)

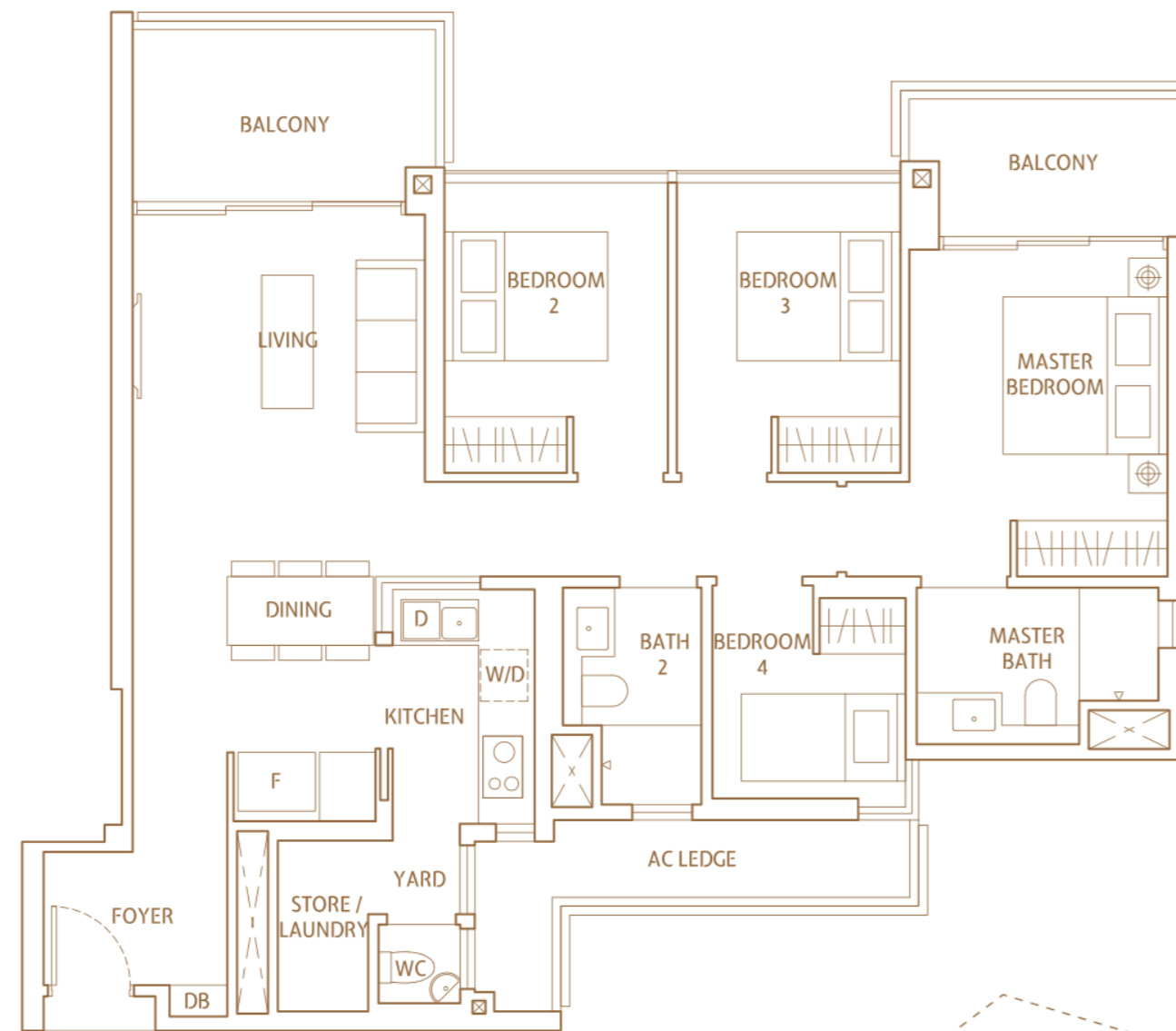
- | | |
|---------------------------|--------------------------|
| | MIRRORED |
| BLOCK 6
#01-24 | BLOCK 2
#01-08 |
| BLOCK 10
#01-36 | BLOCK 8
#01-33 |
| BLOCK 12
#01-42 | |



Type D1

1259 sqft (117 sqm)

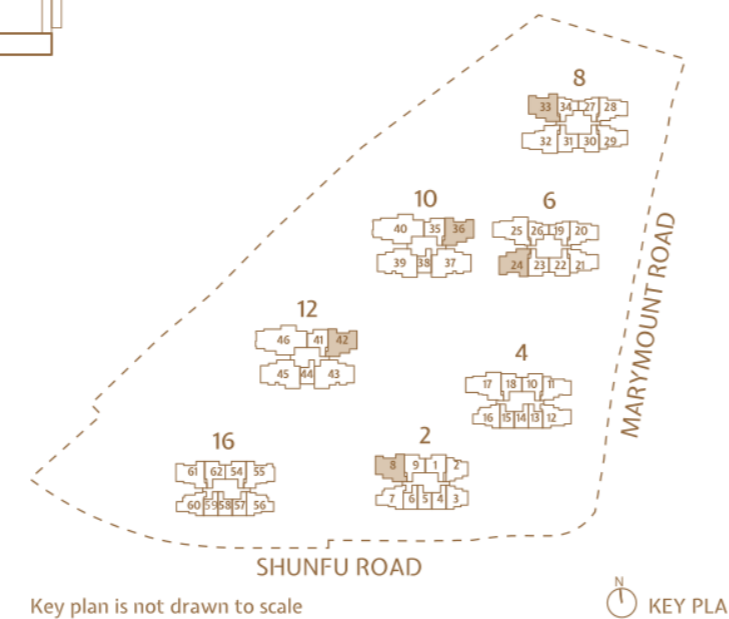
- | | |
|-------------------------------------|------------------------------------|
| | MIRRORED |
| BLOCK 6
#02-24 TO #23-24 | BLOCK 2
#02-08 TO #23-08 |
| BLOCK 10
#02-36 TO #22-36 | BLOCK 8
#02-33 TO #23-33 |
| BLOCK 12
#02-42 TO #23-42 | |



- LEGEND
- | | | |
|------------------|------------|--------|
| WASHER CUM DRYER | DISHWASHER | FRIDGE |
|------------------|------------|--------|

NOTE
FOR INFORMATION OF VARYING LENGTH OF DIVIDING WALL BETWEEN ADJACENT UNITS AND/OR FACADE FEATURES VISIBLE TO UNITS, WHERE APPLICABLE, AND NOT DEPICTED IN THE UNIT FLOOR PLAN, PLEASE REFER TO THE RESPECTIVE BLOCK PLAN(S).

AREA INCLUDES A/C LEDGE, BALCONY AND PRIVATE ENCLOSED SPACE (PES) WHERE APPLICABLE. THE ABOVE PLANS AND ILLUSTRATIONS ARE SUBJECT TO CHANGE AS MAYBE REQUIRED OR APPROVED BY THE RELEVANT AUTHORITIES. ALL FLOOR AREAS ARE APPROXIMATE ONLY AND SUBJECT TO FINAL SURVEY. PLEASE REFER TO THE KEY PLAN FOR ORIENTATION.

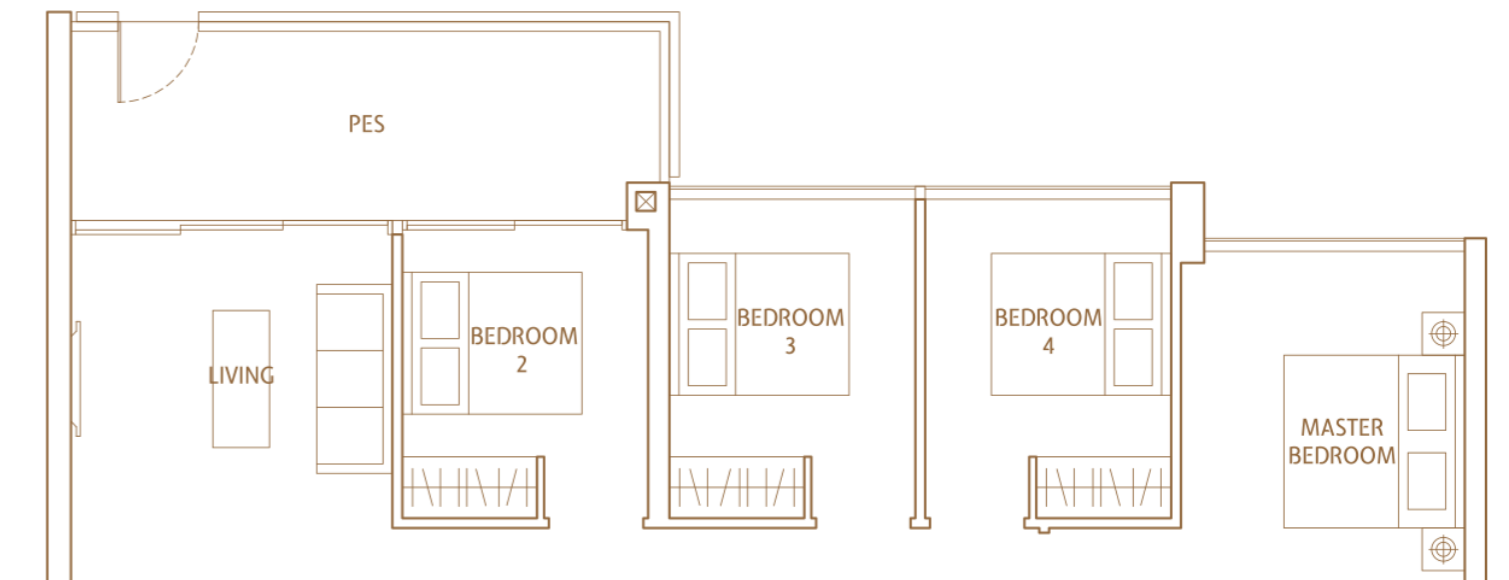


4 Bedroom Deluxe

Type D2(P)

1421 sqft (132 sqm)

- BLOCK 8**
#01-32



Type D2

1421 sqft (132 sqm)

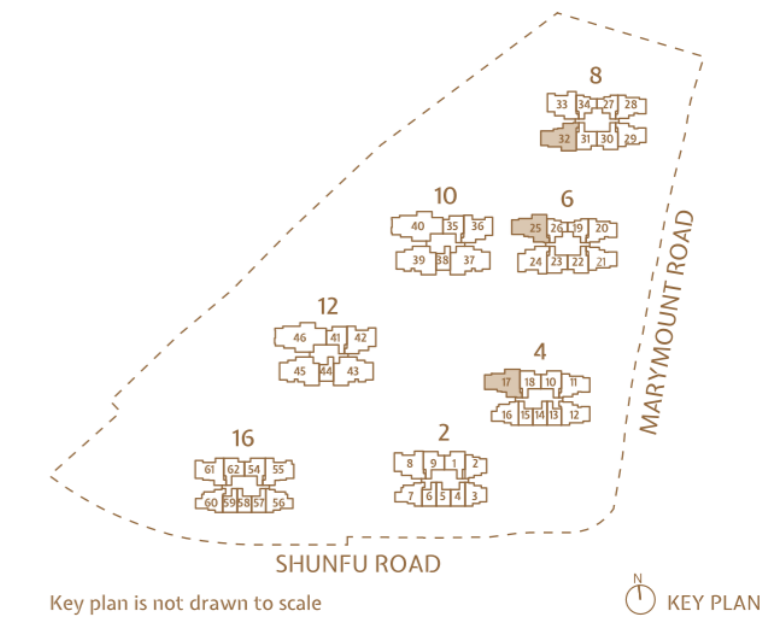
- BLOCK 8**
#02-32 TO #23-32
- MIRRORED
- BLOCK 4**
#02-17 TO #23-17
- BLOCK 6**
#02-25 TO #23-25



- LEGEND
- | | | |
|------------------|------------|--------|
| WASHER CUM DRYER | DISHWASHER | FRIDGE |
|------------------|------------|--------|

NOTE
FOR INFORMATION OF VARYING LENGTH OF DIVIDING WALL BETWEEN ADJACENT UNITS AND/OR FACADE FEATURES VISIBLE TO UNITS, WHERE APPLICABLE, AND NOT DEPICTED IN THE UNIT FLOOR PLAN, PLEASE REFER TO THE RESPECTIVE BLOCK PLAN(S).

AREA INCLUDES A/C LEDGE, BALCONY AND PRIVATE ENCLOSED SPACE (PES) WHERE APPLICABLE. THE ABOVE PLANS AND ILLUSTRATIONS ARE SUBJECT TO CHANGE AS MAYBE REQUIRED OR APPROVED BY THE RELEVANT AUTHORITIES. ALL FLOOR AREAS ARE APPROXIMATE ONLY AND SUBJECT TO FINAL SURVEY. PLEASE REFER TO THE KEY PLAN FOR ORIENTATION.



We work with the most inspirational luxury suppliers to create homes that are the perfect balance of elegance and functionality.

Designed with timeless, quality fixtures and fittings, our homes are the ideal illustration of when design meets innovation.

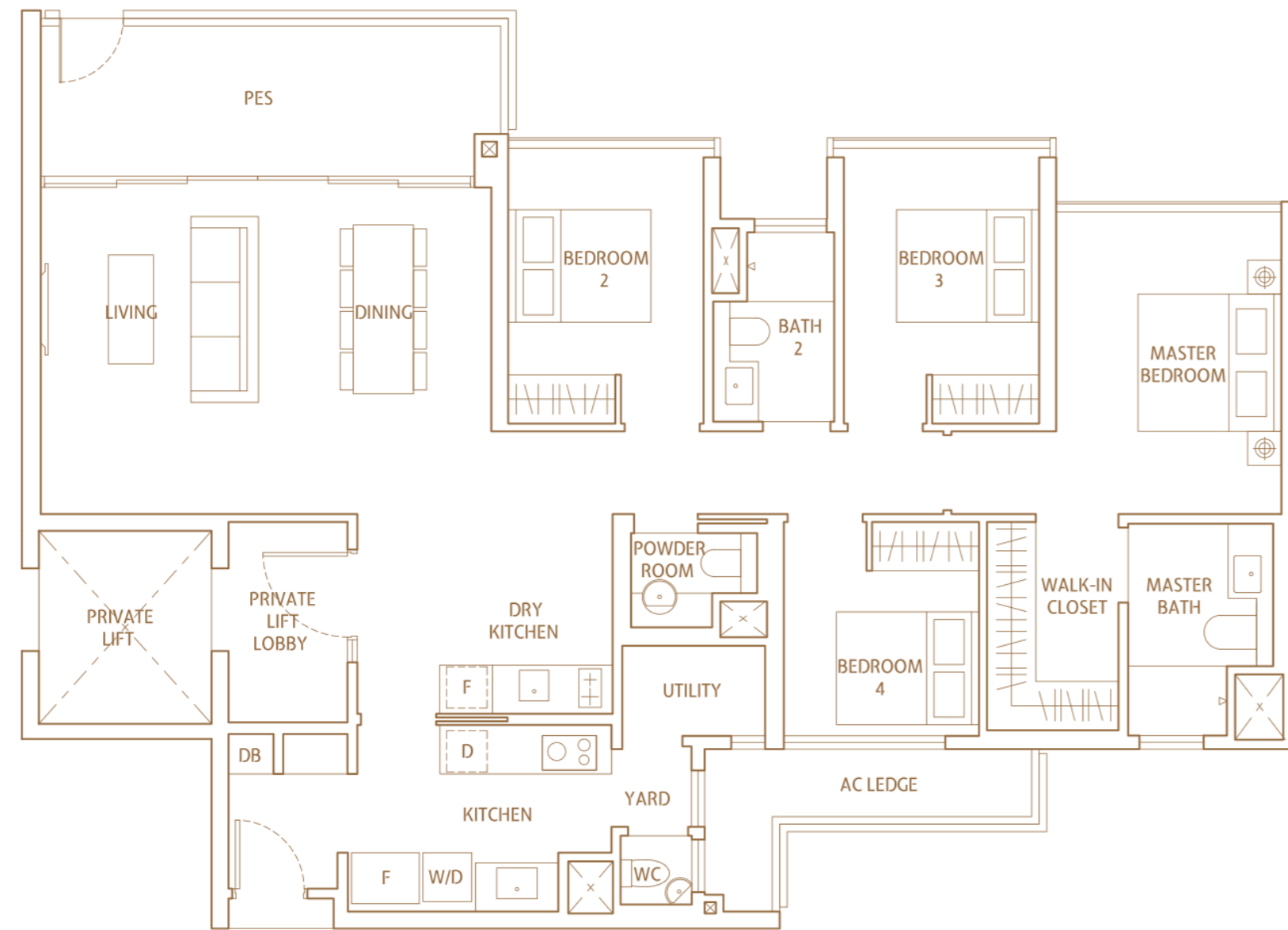


4 Bedroom Suite

Type DP(P)

1647 sqft (153 sqm)

	MIRRORED
BLOCK 10 #01-39	BLOCK 10 #01-37
BLOCK 12 #01-45	BLOCK 12 #01-43

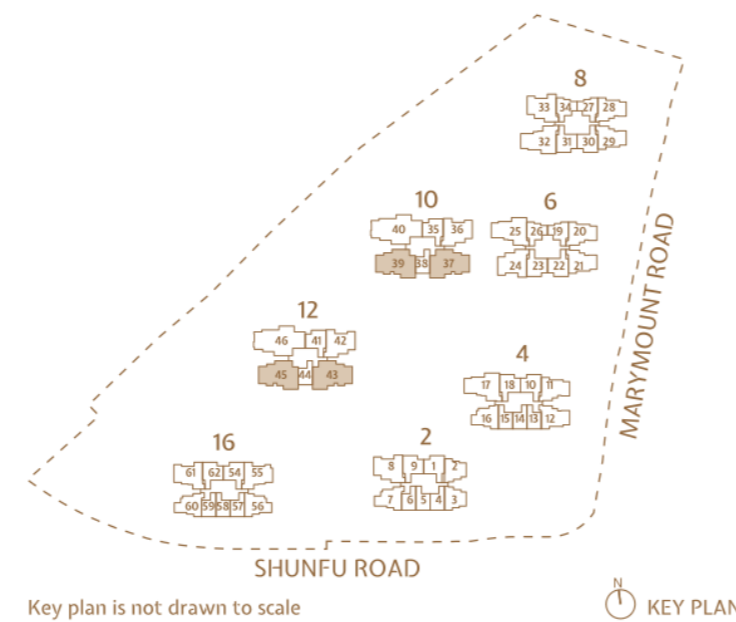


LEGEND

INTEGRATED FRIDGE	FRIDGE	WASHER AND DRYER
DISHWASHER		

NOTE
FOR INFORMATION OF VARYING LENGTH OF DIVIDING WALL BETWEEN ADJACENT UNITS AND/OR FACADE FEATURES VISIBLE TO UNITS, WHERE APPLICABLE, AND NOT DEPICTED IN THE UNIT FLOOR PLAN, PLEASE REFER TO THE RESPECTIVE BLOCK PLAN(S).

AREA INCLUDES A/C LEDGE, BALCONY AND PRIVATE ENCLOSED SPACE (PES) WHERE APPLICABLE. THE ABOVE PLANS AND ILLUSTRATIONS ARE SUBJECT TO CHANGE AS MAYBE REQUIRED OR APPROVED BY THE RELEVANT AUTHORITIES. ALL FLOOR AREAS ARE APPROXIMATE ONLY AND SUBJECT TO FINAL SURVEY. PLEASE REFER TO THE KEY PLAN FOR ORIENTATION.

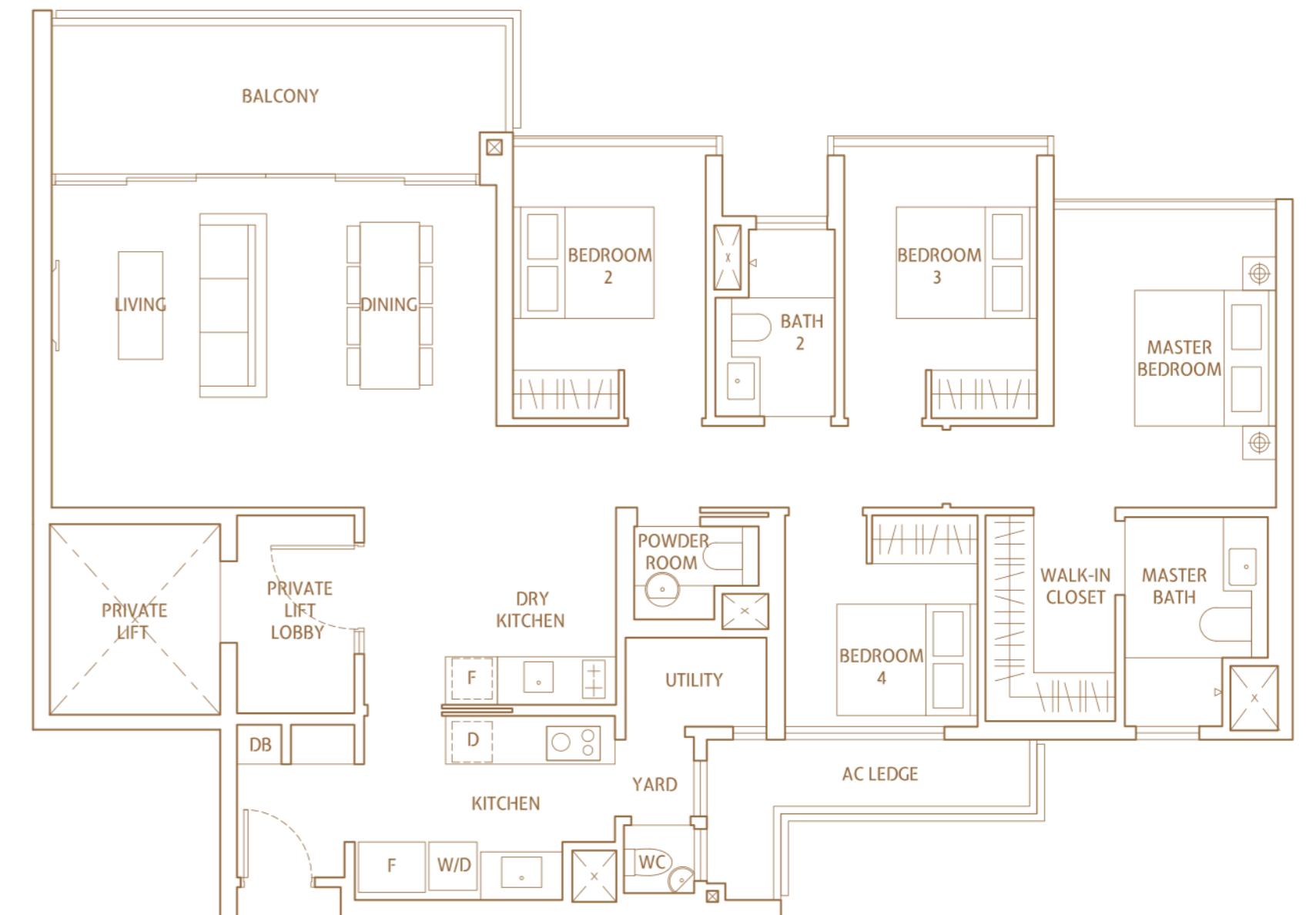


4 Bedroom Suite

Type DP

1647 sqft (153 sqm)

	MIRRORED
BLOCK 10 #02-39 TO #12-39 #16-39 TO #21-39	BLOCK 10 #02-37 TO #21-37
BLOCK 12 #02-45 TO #12-45 #16-45 TO #22-45	BLOCK 12 #02-43 TO #22-43

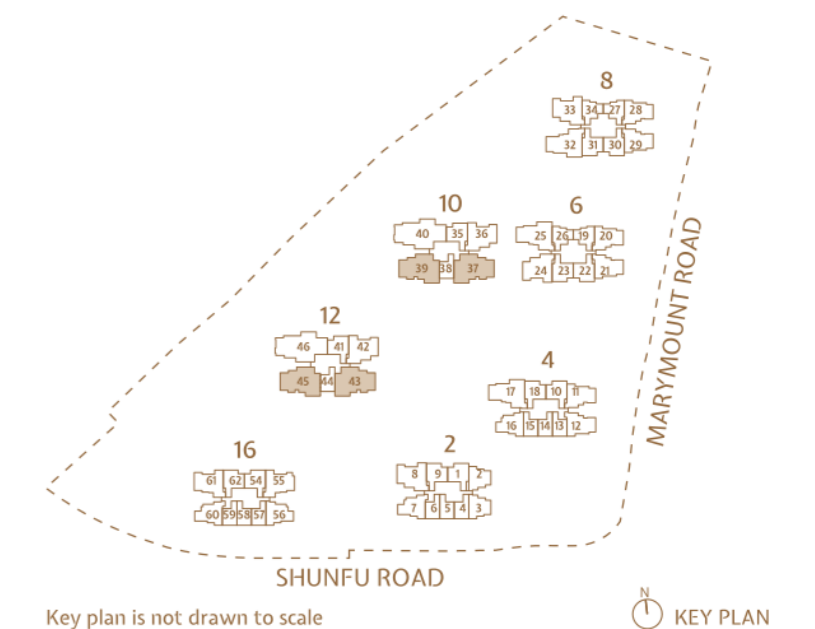


LEGEND

INTEGRATED FRIDGE	FRIDGE	WASHER AND DRYER
DISHWASHER		

NOTE
FOR INFORMATION OF VARYING LENGTH OF DIVIDING WALL BETWEEN ADJACENT UNITS AND/OR FACADE FEATURES VISIBLE TO UNITS, WHERE APPLICABLE, AND NOT DEPICTED IN THE UNIT FLOOR PLAN, PLEASE REFER TO THE RESPECTIVE BLOCK PLAN(S).

AREA INCLUDES A/C LEDGE, BALCONY AND PRIVATE ENCLOSED SPACE (PES) WHERE APPLICABLE. THE ABOVE PLANS AND ILLUSTRATIONS ARE SUBJECT TO CHANGE AS MAYBE REQUIRED OR APPROVED BY THE RELEVANT AUTHORITIES. ALL FLOOR AREAS ARE APPROXIMATE ONLY AND SUBJECT TO FINAL SURVEY. PLEASE REFER TO THE KEY PLAN FOR ORIENTATION.



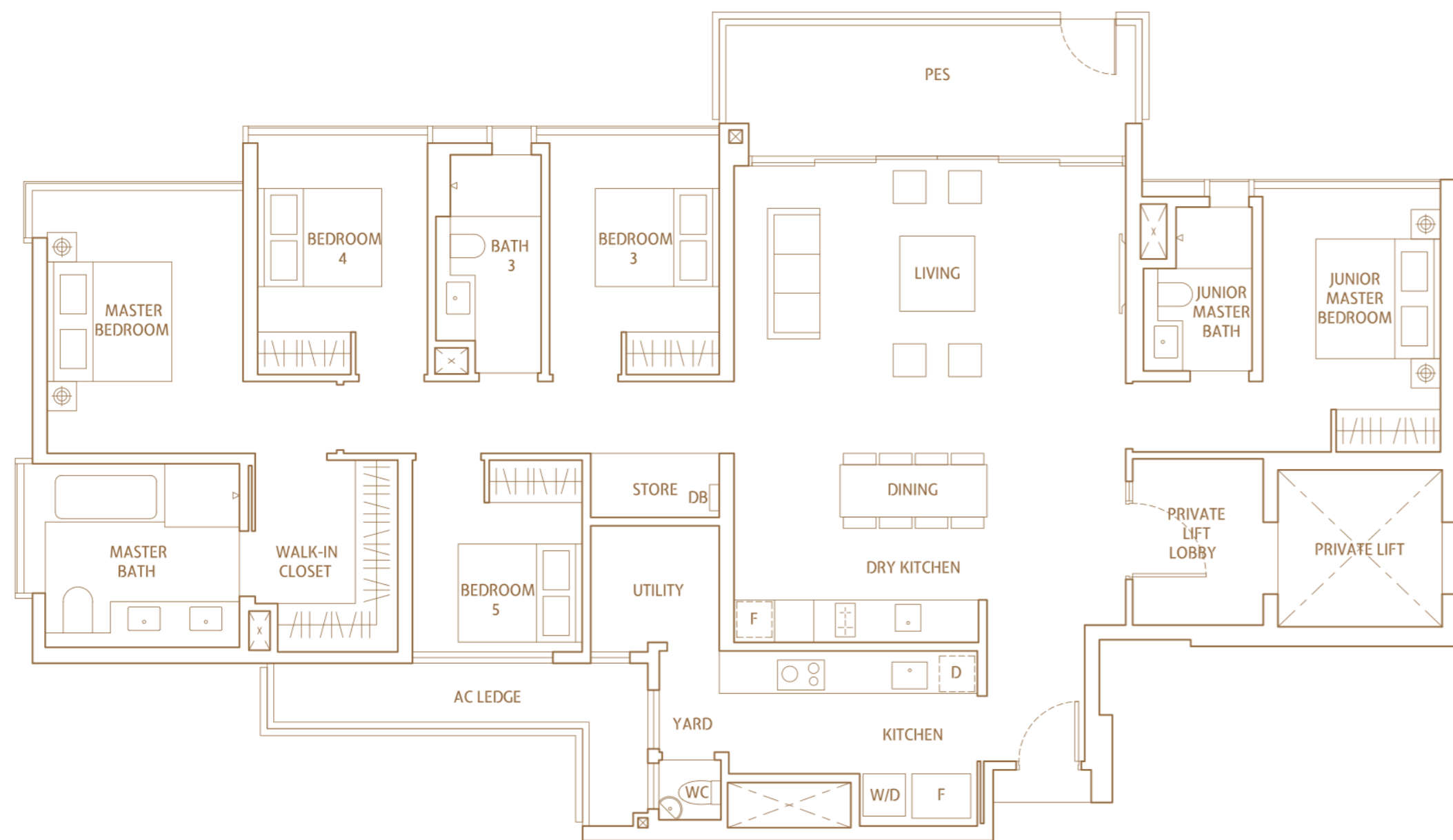
5 Bedroom Suite

Type EP (P)

2099 sqft (195 sqm)

BLOCK 10
#01-40

BLOCK 12
#01-46



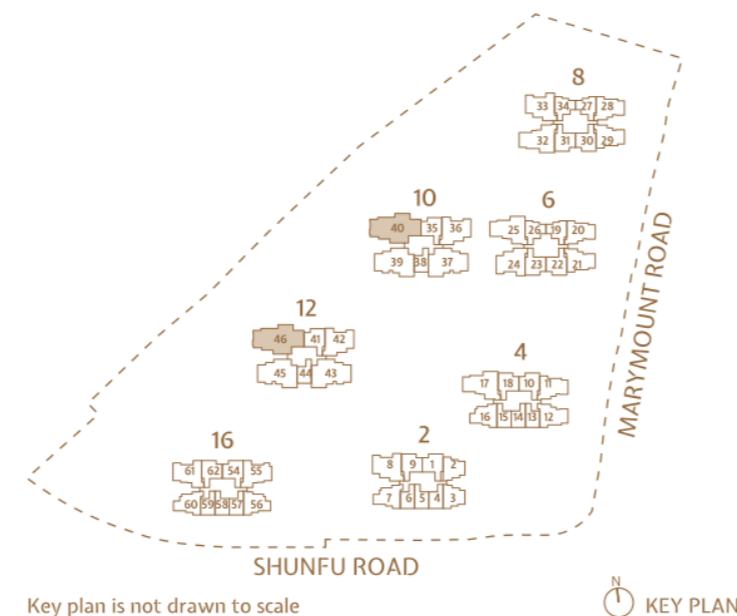
LEGEND

- F INTEGRATED FRIDGE F FRIDGE W/D WASHER AND DRYER
- D DISHWASHER

NOTE

FOR INFORMATION OF VARYING LENGTH OF DIVIDING WALL BETWEEN ADJACENT UNITS AND/OR FACADE FEATURES VISIBLE TO UNITS, WHERE APPLICABLE, AND NOT DEPICTED IN THE UNIT FLOOR PLAN, PLEASE REFER TO THE RESPECTIVE BLOCK PLAN (S).

AREA INCLUDES A/C LEDGE, BALCONY AND PRIVATE ENCLOSED SPACE (PES) WHERE APPLICABLE. THE ABOVE PLANS AND ILLUSTRATIONS ARE SUBJECT TO CHANGE AS MAYBE REQUIRED OR APPROVED BY THE RELEVANT AUTHORITIES. ALL FLOOR AREAS ARE APPROXIMATE ONLY AND SUBJECT TO FINAL SURVEY. PLEASE REFER TO THE KEY PLAN FOR ORIENTATION.



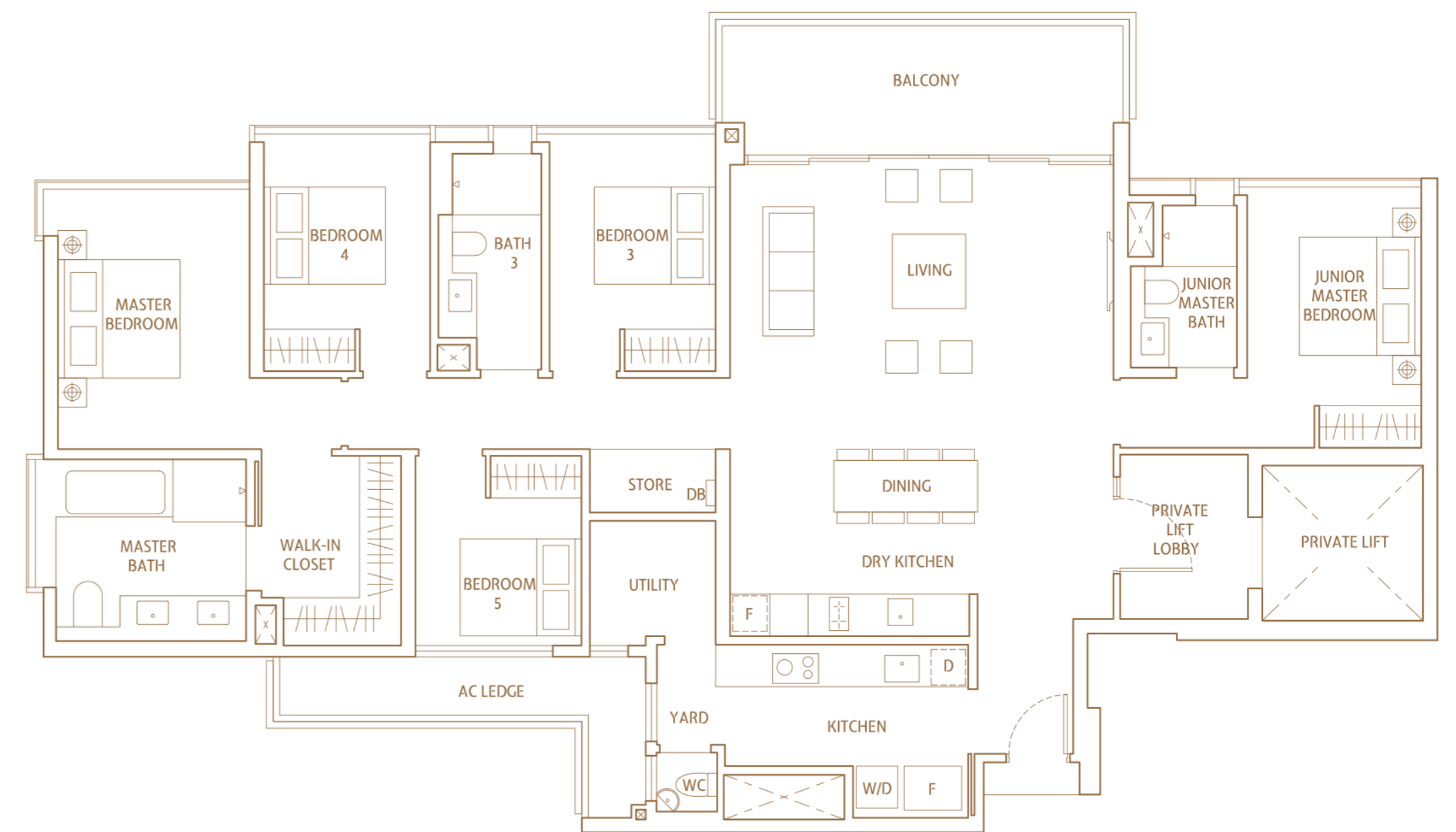
5 Bedroom Suite

Type EP

2099 sqft (195 sqm)

BLOCK 10
#02-40 TO #12-40
#16-40 TO #22-40

BLOCK 12
#02-46 TO #12-46
#16-46 TO #23-46



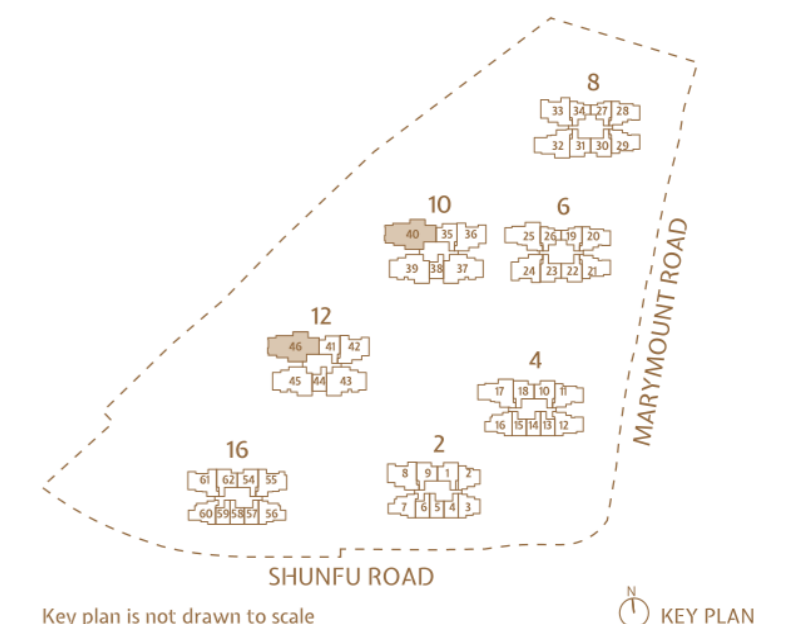
LEGEND

- F INTEGRATED FRIDGE F FRIDGE W/D WASHER AND DRYER
- D DISHWASHER

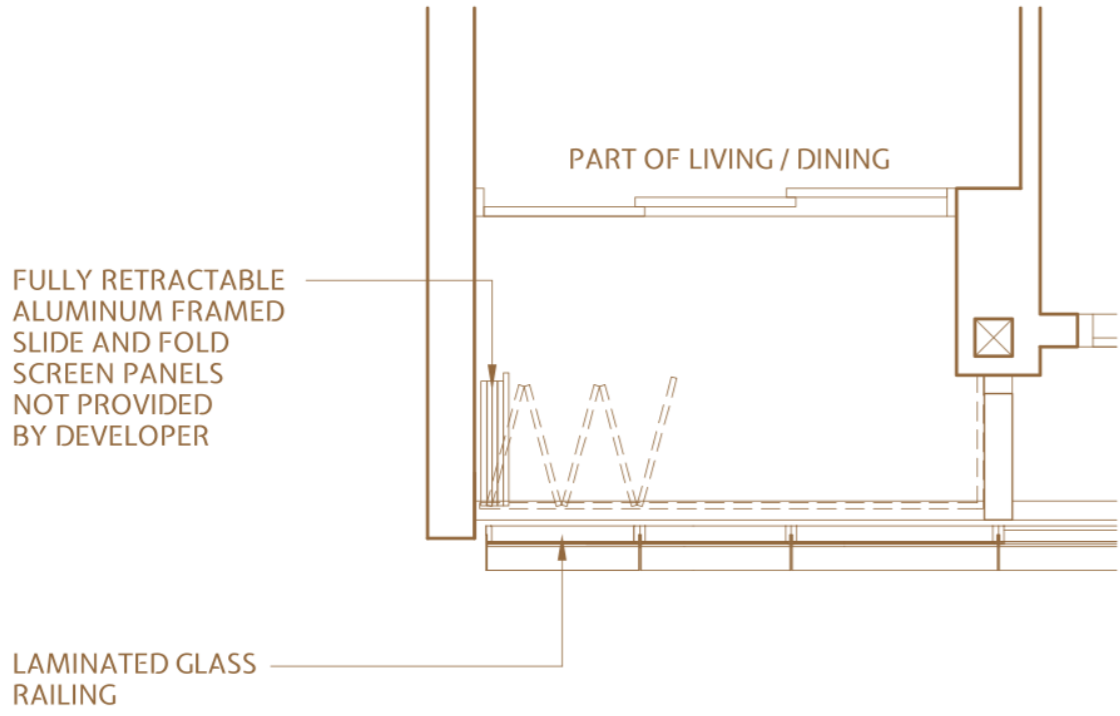
NOTE

FOR INFORMATION OF VARYING LENGTH OF DIVIDING WALL BETWEEN ADJACENT UNITS AND/OR FACADE FEATURES VISIBLE TO UNITS, WHERE APPLICABLE, AND NOT DEPICTED IN THE UNIT FLOOR PLAN, PLEASE REFER TO THE RESPECTIVE BLOCK PLAN (S).

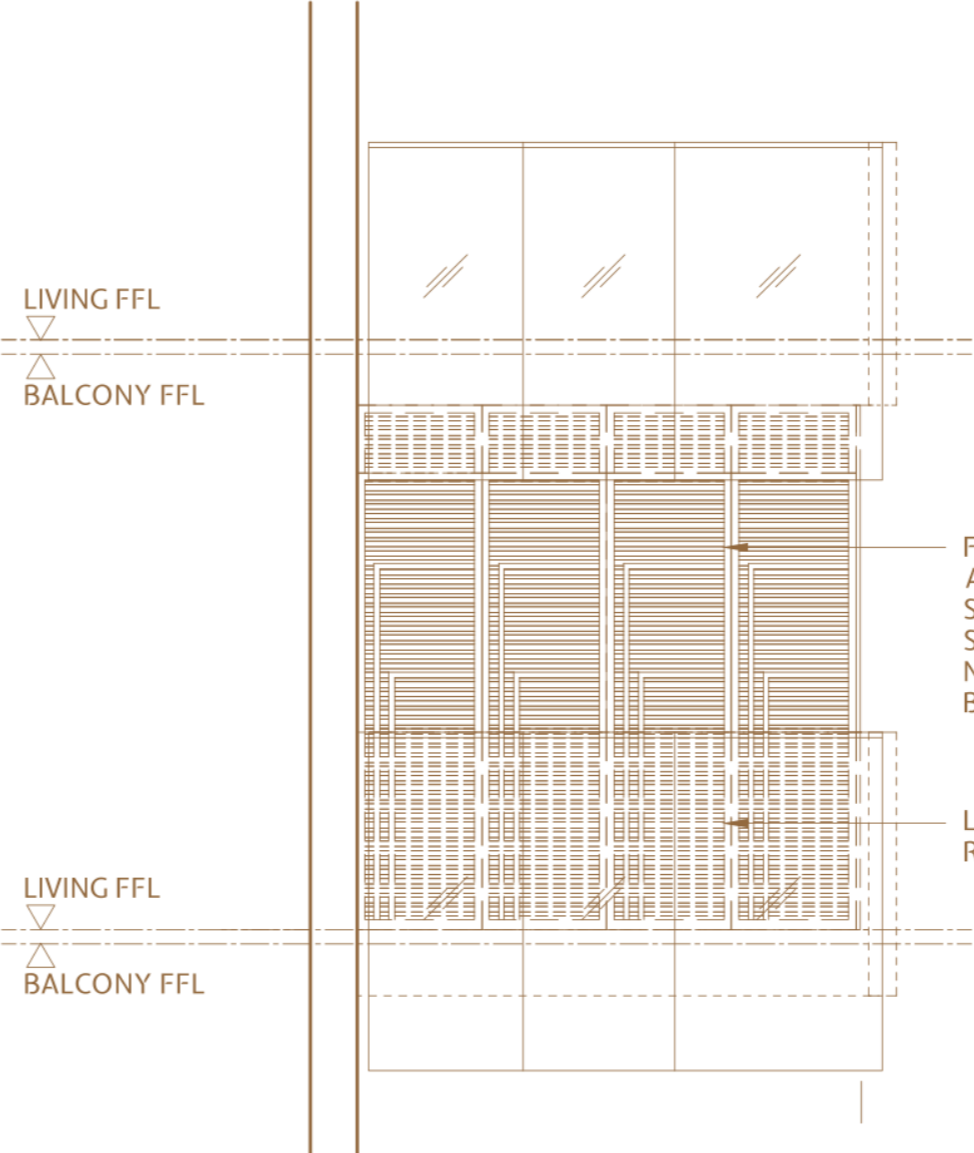
AREA INCLUDES A/C LEDGE, BALCONY AND PRIVATE ENCLOSED SPACE (PES) WHERE APPLICABLE. THE ABOVE PLANS AND ILLUSTRATIONS ARE SUBJECT TO CHANGE AS MAYBE REQUIRED OR APPROVED BY THE RELEVANT AUTHORITIES. ALL FLOOR AREAS ARE APPROXIMATE ONLY AND SUBJECT TO FINAL SURVEY. PLEASE REFER TO THE KEY PLAN FOR ORIENTATION.



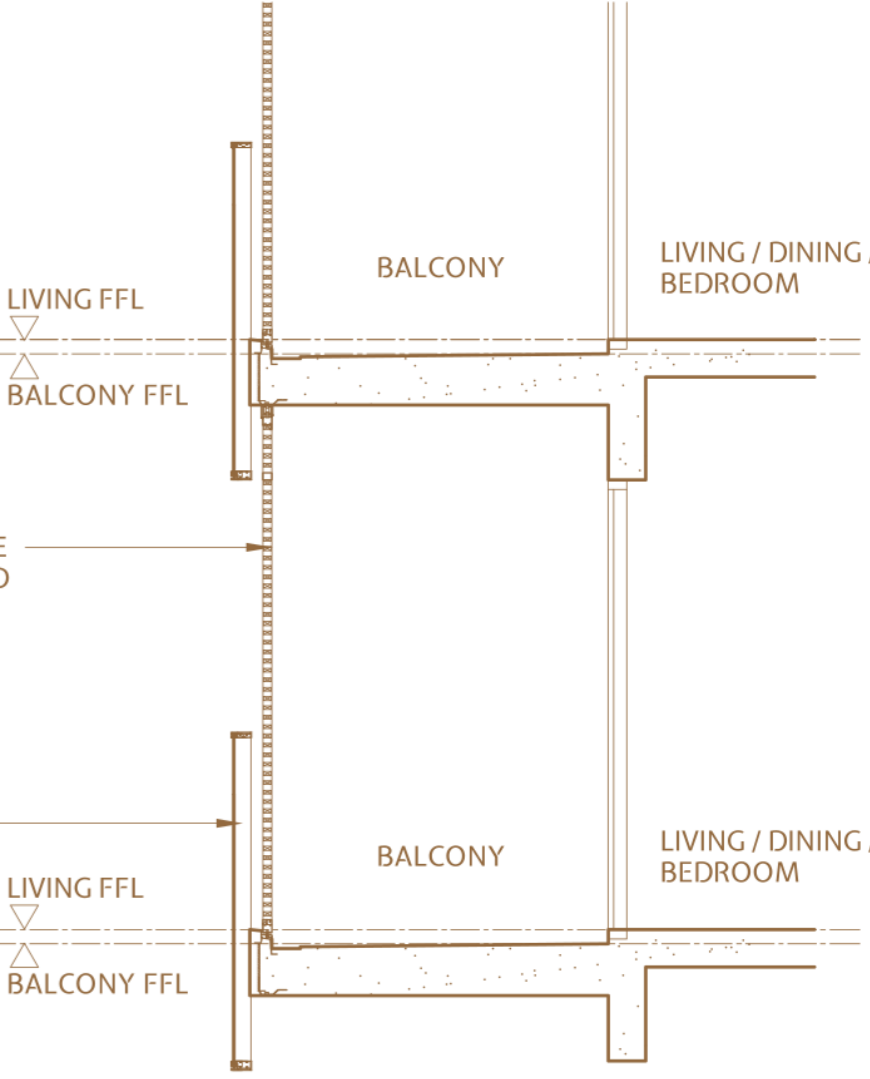
Balcony Screen Design



PLAN



ELEVATION



SECTION

BALCONY SCREEN DETAILS

NOTE: THE PRIVATE ENCLOSED SPACE (PES) AND BALCONY SHALL BE NOT ENCLOSED UNLESS WITH THE APPROVED BALCONY SCREEN AS SHOWN ABOVE. THE COST OF SCREEN AND INSTALLATION SHALL BE BORNE BY THE PURCHASER.



SMARTER SECURITY



Face Recognition

Face recognition technology at your lift lobby allows seamless and secured access back home



All-Seeing Doorbell

Even when you are not at home, you can always see who's at the door



Fire Safety

Smoke detectors provide real-time information to the guard house as well as instant alerts to residents and emergency services



A Watchful Eye

PTZ (Pan-Tilt-Zoom) IP Camera with Audio & Video function to monitor your children and pets anytime



Anytime, Anywhere

Use your smart device to check if you have securely locked your door

SMARTER COMMUNITY



We Organize, You Party

Make every celebration a success by selecting from our list of party and event planners



Your Food, Your Way

Choose your favourite dishes from a list of caterers, pay for them and have it delivered to you all through the app



Learn New Skills

Learn to swim, take a cooking class or pick up a new hobby from certified instructors



Keep Fit, Stay Active

Take your pick from Zumba, Yoga, Pilates or dance classes for a healthier lifestyle



Hassle Free, Home Help

From house cleaning and choked pipes to aircon maintenance, choose from a curated list of services at your fingertips



24/7 Facility Booking

Select and book your preferred facility whenever, wherever



Unlimited Privileges

Exclusive deals and promotions

SMARTER HEALTH



Smart Integrated Dishwasher#

- Ultrasonic fruit and vegetable cleaning removes up to 99.99% of chemicals
- High temperature washing & sterilization of soiled dishes
- Water saving, time saving and energy saving



Water Purifier**

Enjoy crystal clear purified alkaline water for better health

SMARTER EFFICIENCY



Smart Aircon and Eco Water Heater*

- 5 ticks energy efficiency aircon system Heat Recovery System (Utilisation of waste heat from aircon condensing unit) to heat up the water tank for your shower
- Save up to 35% on electricity bills
- Cleaner air with PM2.5 dust collection filter



Pre-cooling Mode

Set your preferred room temperature even before you arrive back home

SMARTER LIVING



Payment Made Easy

Pay your maintenance fees through the app



Virtual Doorman

Lock and unlock your doors remotely



Face-To-Face Greetings

Welcome your guests through the lift lobby's video intercom system



Wash Bay

Narrowband-Internet of Things (NB-IoT) enabled sensors allow real-time checks on availability of the car wash bays



Voice Control

Control your appliances at home with voice commands including your entertainment systems, aircon, curtains and lightings



Parcel Station

Securely receive your parcels even when you are away and conveniently retrieve them by scanning your QR code



VIP Access

Give your guests the VIP treatment. With one click of the app, the guards will be informed instantly of your guests' arrival, making visits from friends and relatives hassle-free and easy

SMARTER CARE



Sleep Smart

With the smart sleep sensor, ensure a better health regimen by monitoring and analysing your sleep patterns (optional)



Simple Control

Customized SMART Control Panel that allows easier access for elderly with simpler interface



In The Pink Of Health

Health monitoring service for residents



Tender Loving Care

Engage childcare, medical and caregiver services in the comfort of your home

SMART

Get SMART.
Live SMART.



* Applicable to master bedroom only.
Applicable to selected unit types only.



About Qingjian Realty (South Pacific) Group Pte Ltd

Qingjian Realty (South Pacific) Group Pte Ltd (Qingjian Realty) is the Southeast Asian regional headquarters for Qingjian Group's real estate development arm. Qingjian Realty focuses on property development in the residential, commercial and industrial sectors.

The trusted developer constantly looks for new ways to provide well-designed and thought-out homes that complement the lifestyles of homeowners. In 2013, Qingjian Realty led the industry in flexible layout options with its innovative CoSpace™ concept. Qingjian Realty paved the way for smart living in Singapore with the launch of The Visionaire, Singapore's first executive condominium with smart homes, in 2016.

Qingjian Realty's commitment to providing quality homes in Singapore is widely recognised. Qingjian Realty has consistently received the BCI Asia Top Ten Award (2013, 2015 to 2018), and has amassed various awards from the Southeast Asia Property Awards, Asia Property Awards and FIABCI Singapore Property Awards. Qingjian Realty has also been conferred multiple BCA Green Mark Awards for its sustainability efforts.

A Multi-Award Winning Developer



Listening, Innovating & Growing with you:



A Residential Masterpiece By



Developer: Qingjian Realty (Marymount) Pte Ltd (ROC-201613375Z) - Developer's Licence No.: C1238 - Encumbrances: Mortgage No. IE/938254H in favour of United Overseas Bank Limited - Lot/Mukim No.: Lot 17609L MK 18 at Shunfu Road - Tenure of Land: 99 years leasehold commencing 19 Jun 2018 - Expected Date of Vacant Possession: 9 Jan 2023 - Expected Date of Legal Completion: 9 Jan 2026

While every reasonable care has been taken in preparing this brochure, specifications, constructing the sales models and sales gallery/showflat (the "Materials"), the Developer and its agents and their respective servants and contractors do not warrant the accuracy of any of the Materials and shall in no way be held responsible for any inaccuracies in their contents or between the Materials and the actual unit when built. The Developer shall not be bound by any statement, representation or promise (written or oral) by its agents and contractors. All statements and depictions are believed to be correct but are not to be regarded as statements or representations of fact. The Sale and Purchase Agreement shall form the entire agreement between the Developer and the Purchaser and shall supersede all statements, representations or promises made prior to the signing of the Sale and Purchase Agreement. All information, specifications, layout plans, building plans, location of facilities, finishes and appliance selection and visuals are subject to any changes as may be required and approved by the Architect, Developer and/or by the relevant authority and may be changed without notice. The Materials are not intended to be contractual documents and shall not form part of any offer or contract. Visuals, renderings, illustrations, models, showflat displays and photography are artist's impressions only and none can be regarded as representation of fact. Floor areas are approximate measurements only and not to scale. It is subject to final survey. The property is subject to inspection by the relevant authorities to comply with current codes of practice.

All information, specifications, rendering, visual representations and plans are current at the time of publication and are subject to change as may be required by us and/or the competent authorities, and shall not form part of any offer or contract nor constitute any warranty by us and shall not be regarded as statements or representations of fact. All plans are subject to amendments as directed and/or approved by the building authorities. The Sale and Purchase Agreement shall form the entire agreement between us as the Developer and the Purchaser, and shall supersede all statements, representations or promises made prior to the signing of the Sale and Purchase Agreement and shall in no way be modified by any statements, representations or promises made by us or the Marketing Agent(s).