

FLOOR PLANS

# 2 - BED ROOM





# AN ABODE TO RIVAL THE HEIGHTS YOU SCALE



For the individual who demands absolute exclusivity, South Beach Residences is a landmark home without equal. Nestled within the iconic South Beach integrated development and perched atop the JW Marriott Singapore South Beach, this is an abode at the height of luxury.



## LUSH SKY GARDENS

Get away from the bustle high above the city. Find retreat and recreation at the two Sky Gardens located on levels 22 and 32.



## JW MARRIOTT SINGAPORE SOUTH BEACH

Live atop this design-led luxury hotel which boasts 634 rooms and suites; five exciting restaurants and bars; The NCO Club, an entertainment and lifestyle venue; and the signature Spa by JW.



## DINING AND ENTERTAINMENT

Indulge your palate with a host of options that run the gamut from casual modern to fine dining.



## CONSERVATION BUILDINGS

Remembering the army camp history of the South Beach site, the four restored military buildings now serve as unique lifestyle and event venues.

## SOUTH BEACH TOWER

The sister tower to South Beach Residences, and a dynamic business hub featuring 34 storeys of Grade A office space.





# LIVE LARGE WITH NO BOUNDARIES



Located within the Civic District, enjoy an address that places you at the heart of Singapore's historical, architectural and cultural heritage.

Connecting you to the island at large, Esplanade MRT Station and City Hall MRT Interchange can be directly accessed from South Beach itself.

By car, key destinations are well within reach: 5 minutes to the Central Business District; 10 minutes to the world-famous Orchard Road shopping belt; and 15 minutes to Changi Airport.



# WHEN EVEN LUXURY HAS BECOME COMMONPLACE, IT'S TIME TO RAISE THE BAR

With only 190 apartments, South Beach Residences is your exclusive sanctuary in the sky. Choose from two-, three- and four-bedroom suites to sprawling penthouses.

Completing your life of leisure — our Signature Residential Services\*. Well versed in the finer points of hospitality, our Residential Hosts are on hand to provide seamless assistance so you can simply put your feet up. From organising a private soirée, to securing restaurant reservations or help with laundry and housekeeping, consider it done.



For illustration only

\*Selected services are chargeable. Terms and conditions apply.



# SITE PLAN

LEVEL 1



- |                               |                           |                          |  |
|-------------------------------|---------------------------|--------------------------|--|
| <b>South Beach Residences</b> | <b>South Beach Avenue</b> | <b>South Beach Tower</b> | <b>JW Marriott Singapore South Beach</b> |
| A Residence Arrival           | E Restaurants & Services  | F Office Lobby           | H Hotel Lobby                            |
| B Residences Lobby One        |                           | G Office Arrival         | I Hotel Arrival                          |
| C Residences Lobby Two        |                           |                          | J The NCO Club                           |
| D Residential Services        |                           |                          | K The Assembly - Meeting Rooms           |
|                               |                           |                          | L Grand Ballroom                         |

SKY GARDEN (LEVEL 22)



SKY GARDEN (LEVEL 32)





# SCHEMATIC DIAGRAM

UNIT  
LEVEL

ROOF

45

44

43

42

41

40

39

38

37

36

35

34

33

32

31

30

29

28

27

26

25

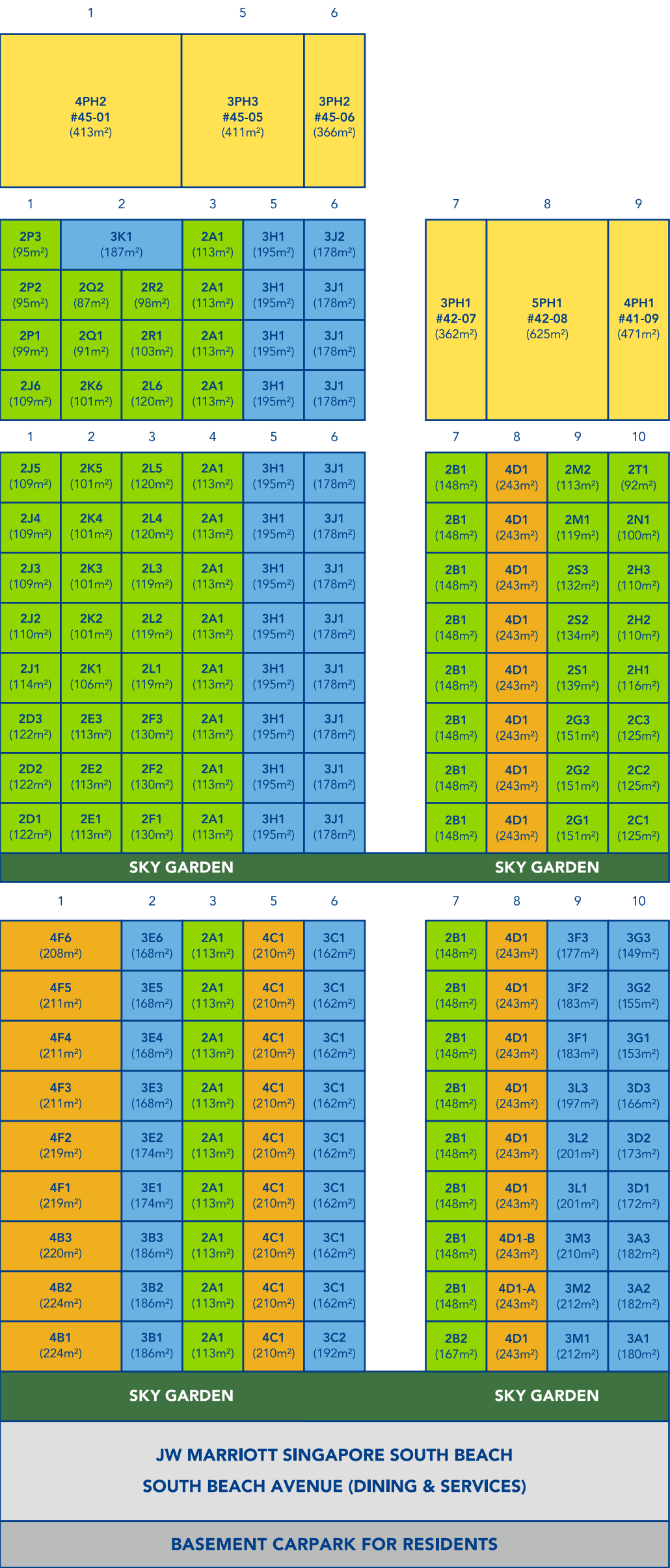
24

23

22

Basement Mezzanine — 21

Basement

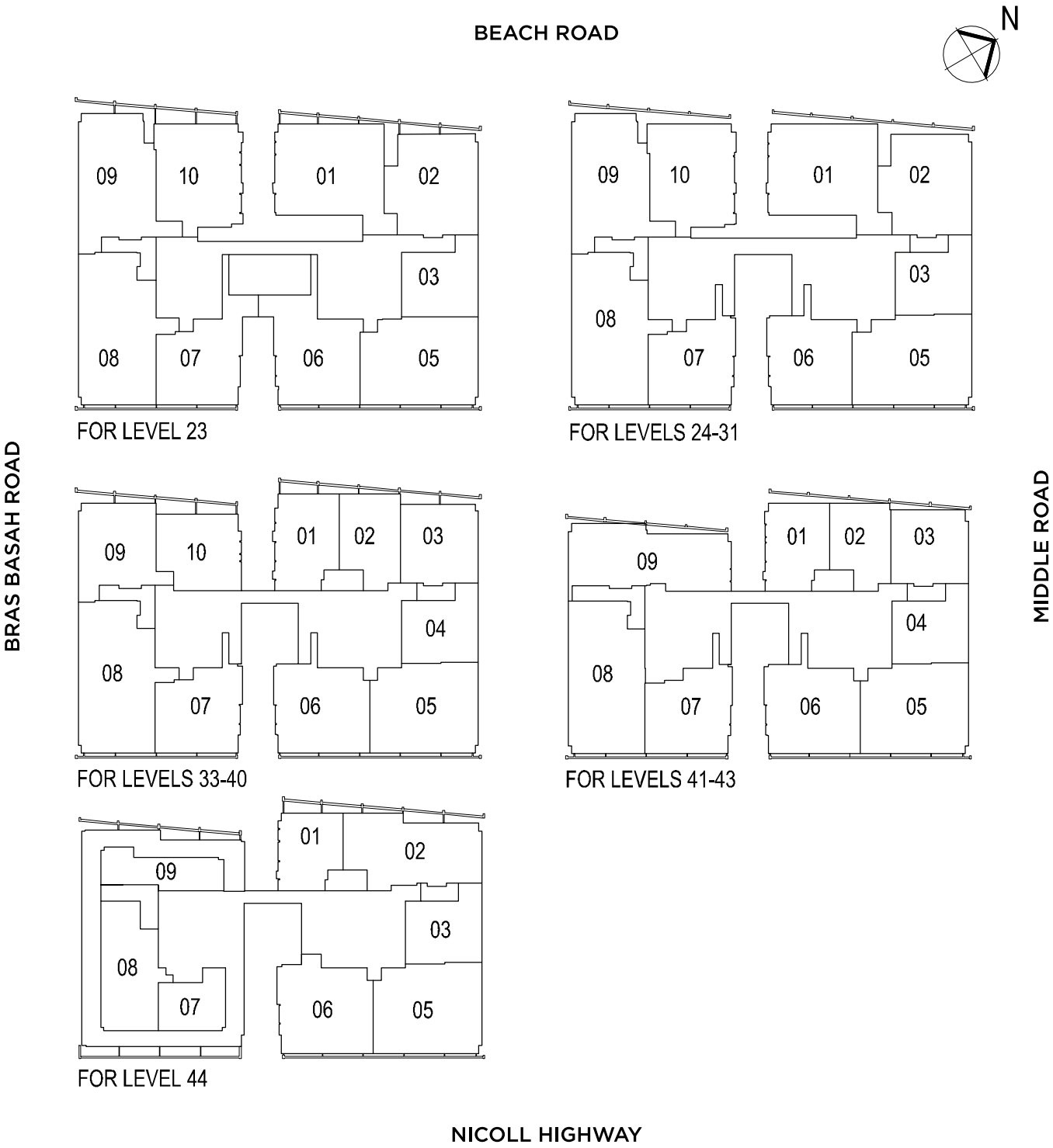


- 2-BEDROOM
- 3-BEDROOM
- 4-BEDROOM
- PENTHOUSE

# STOREY KEY PLANS

TO ORCHARD ROAD

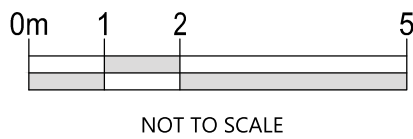
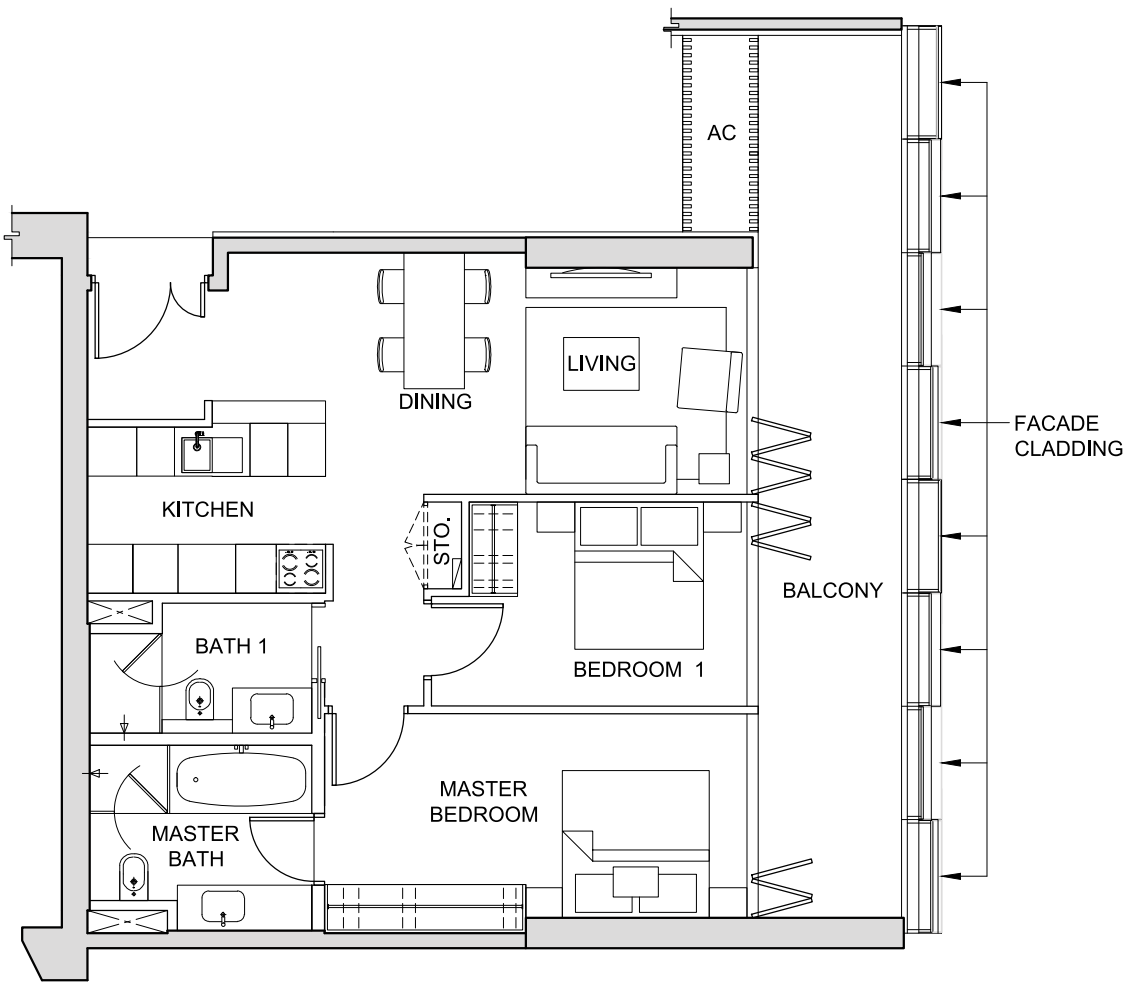
TO MARINA BAY SANDS





TYPE 2A1

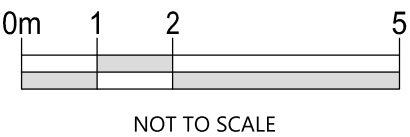
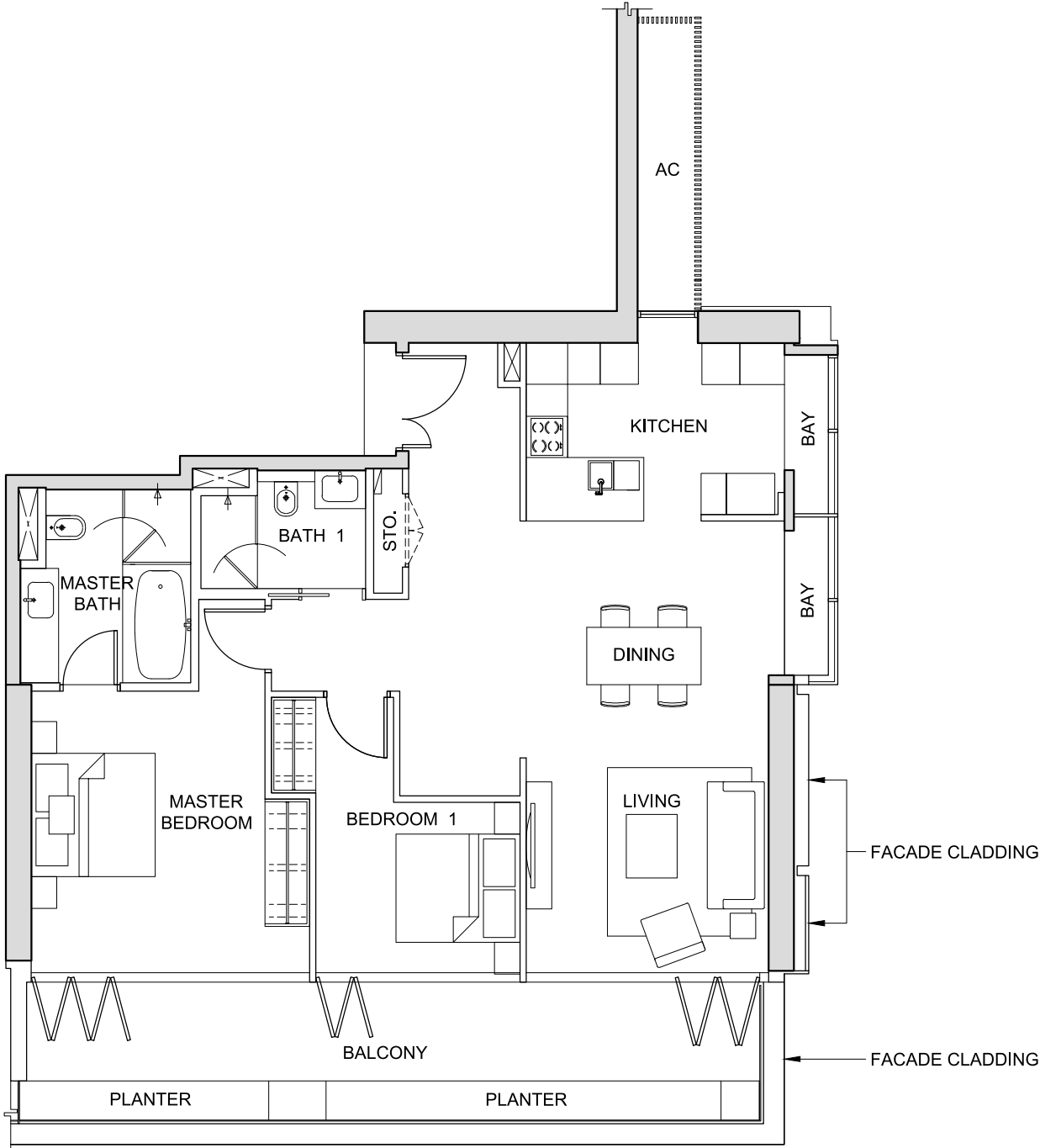
2-BEDROOM  
(113 sq m / 1,216 sq ft)



- #23-03
- #24-03
- #25-03
- #26-03
- #27-03
- #28-03
- #29-03
- #30-03
- #31-03
- #33-04
- #34-04
- #35-04
- #36-04
- #37-04
- #38-04
- #39-04
- #40-04
- #41-04
- #42-04
- #43-04
- #44-03

TYPE 2B1

2-BEDROOM  
(148 sq m / 1,593 sq ft)



- #24-07
- #25-07
- #26-07
- #27-07
- #28-07
- #29-07
- #30-07
- #31-07
- #33-07
- #34-07
- #35-07
- #36-07
- #37-07
- #38-07
- #39-07
- #40-07



The above plans and illustrations are subject to change as may be required or approved by the relevant authorities. All measurements are estimates only and are subject to final survey.



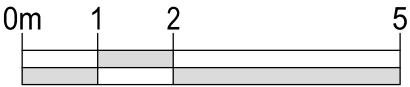
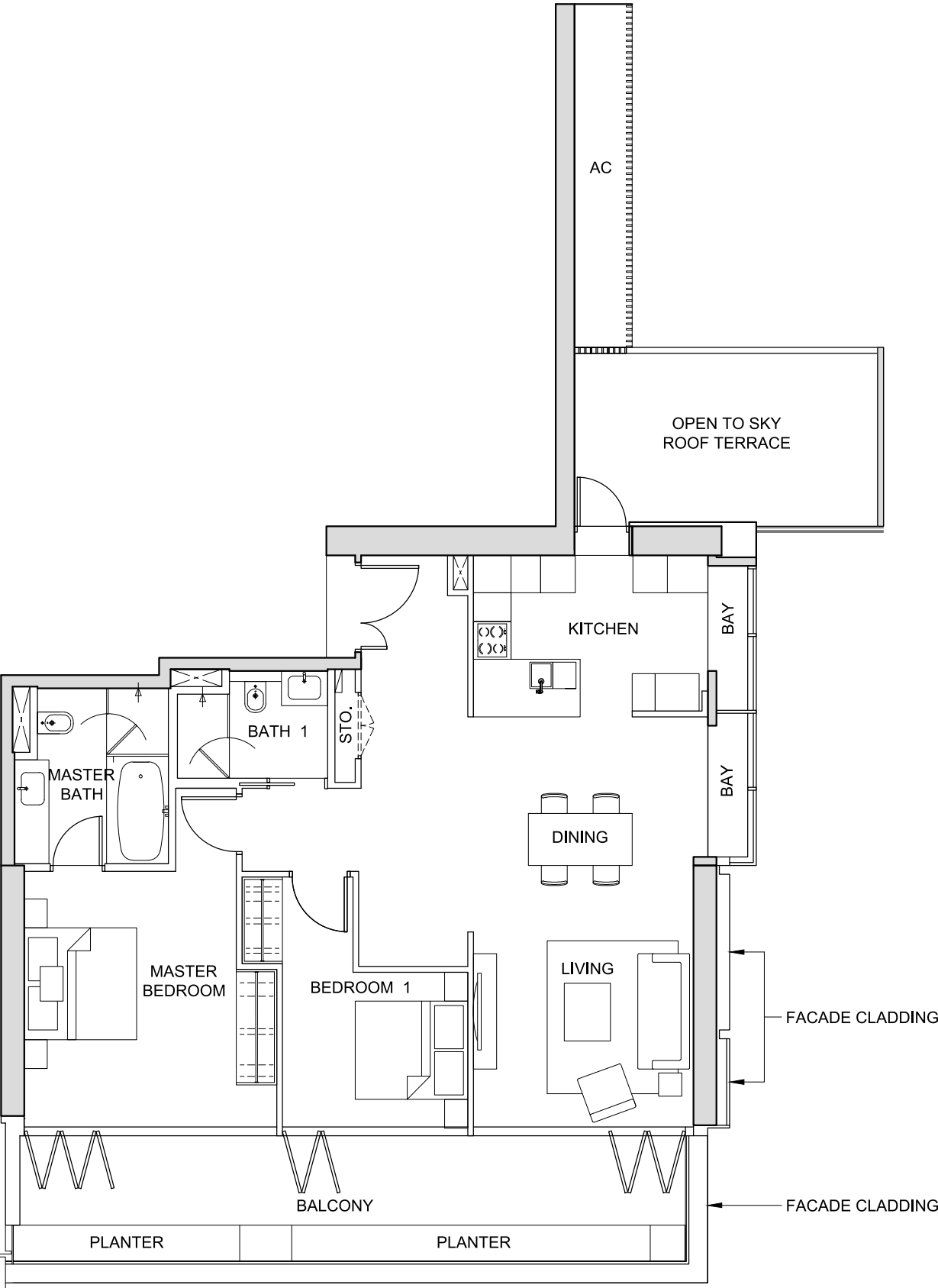
The above plans and illustrations are subject to change as may be required or approved by the relevant authorities. All measurements are estimates only and are subject to final survey.



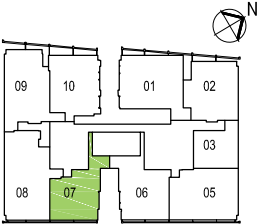
TYPE 2B2

2-BEDROOM  
(167 sq m / 1,798 sq ft)

#23-07



NOT TO SCALE



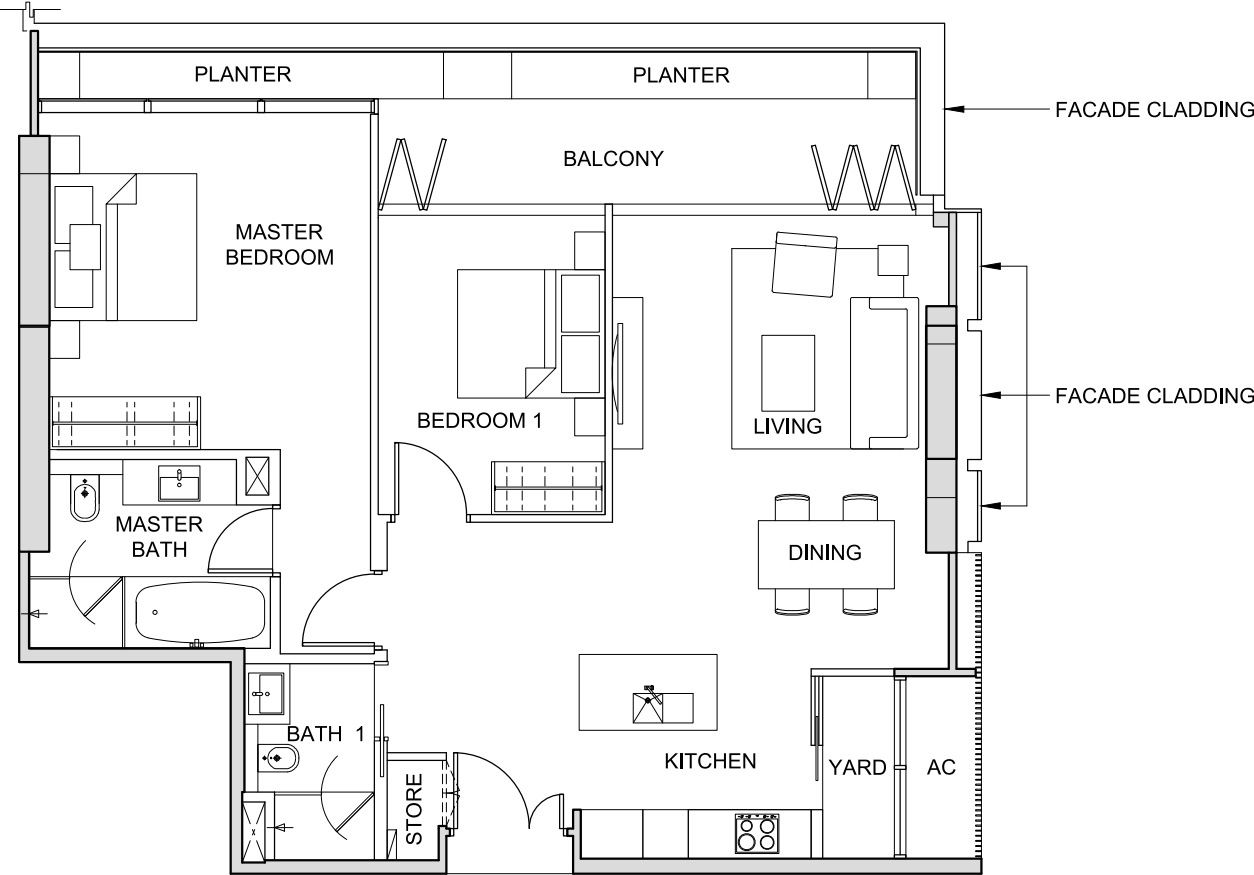
FOR LEVEL 23

The above plans and illustrations are subject to change as may be required or approved by the relevant authorities. All measurements are estimates only and are subject to final survey.

TYPE 2C1

2-BEDROOM  
(125 sq m / 1,346 sq ft)

#33-10



NOT TO SCALE



FOR LEVEL 33

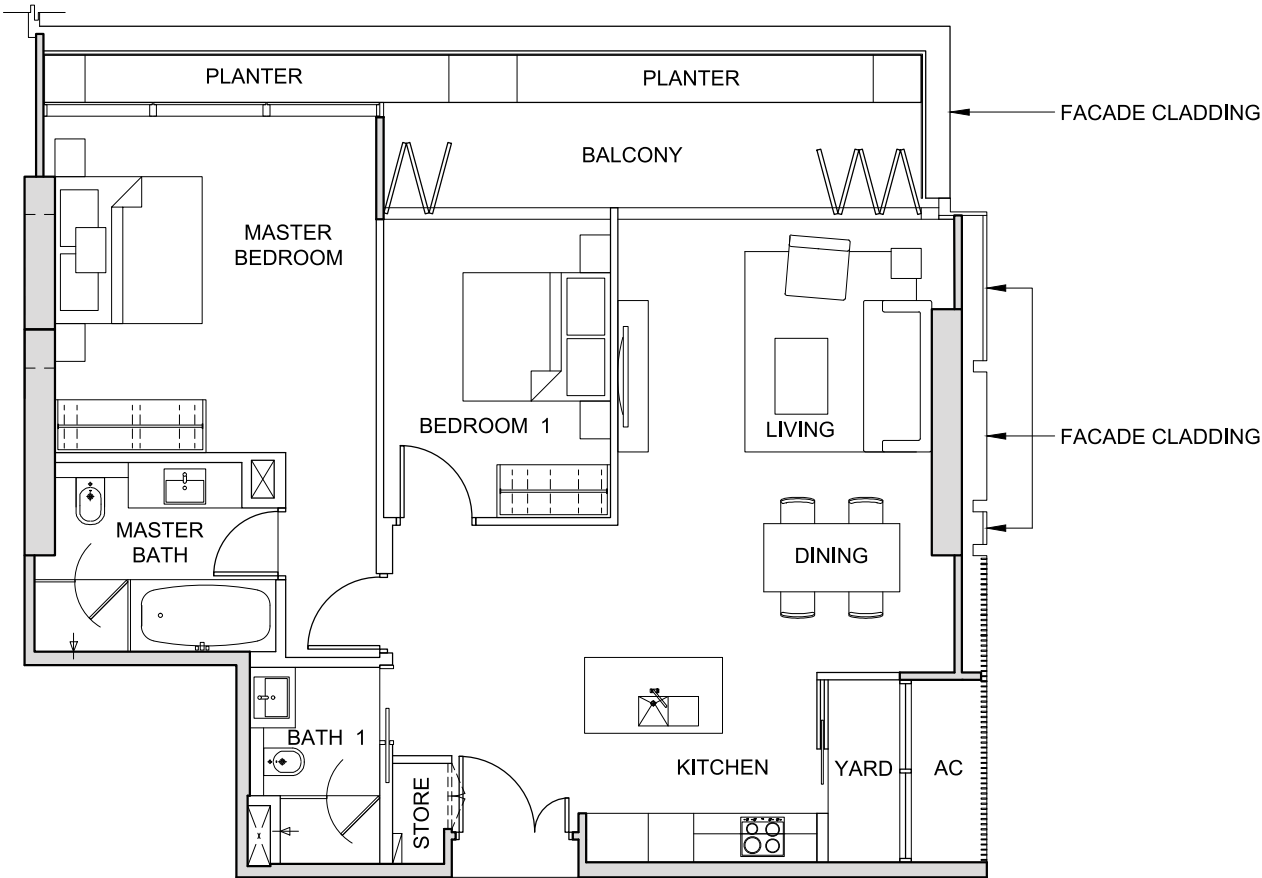
The above plans and illustrations are subject to change as may be required or approved by the relevant authorities. All measurements are estimates only and are subject to final survey.



TYPE 2C2

2-BEDROOM  
(125 sq m / 1,346 sq ft)

#34-10



0m 1 2 5  
NOT TO SCALE



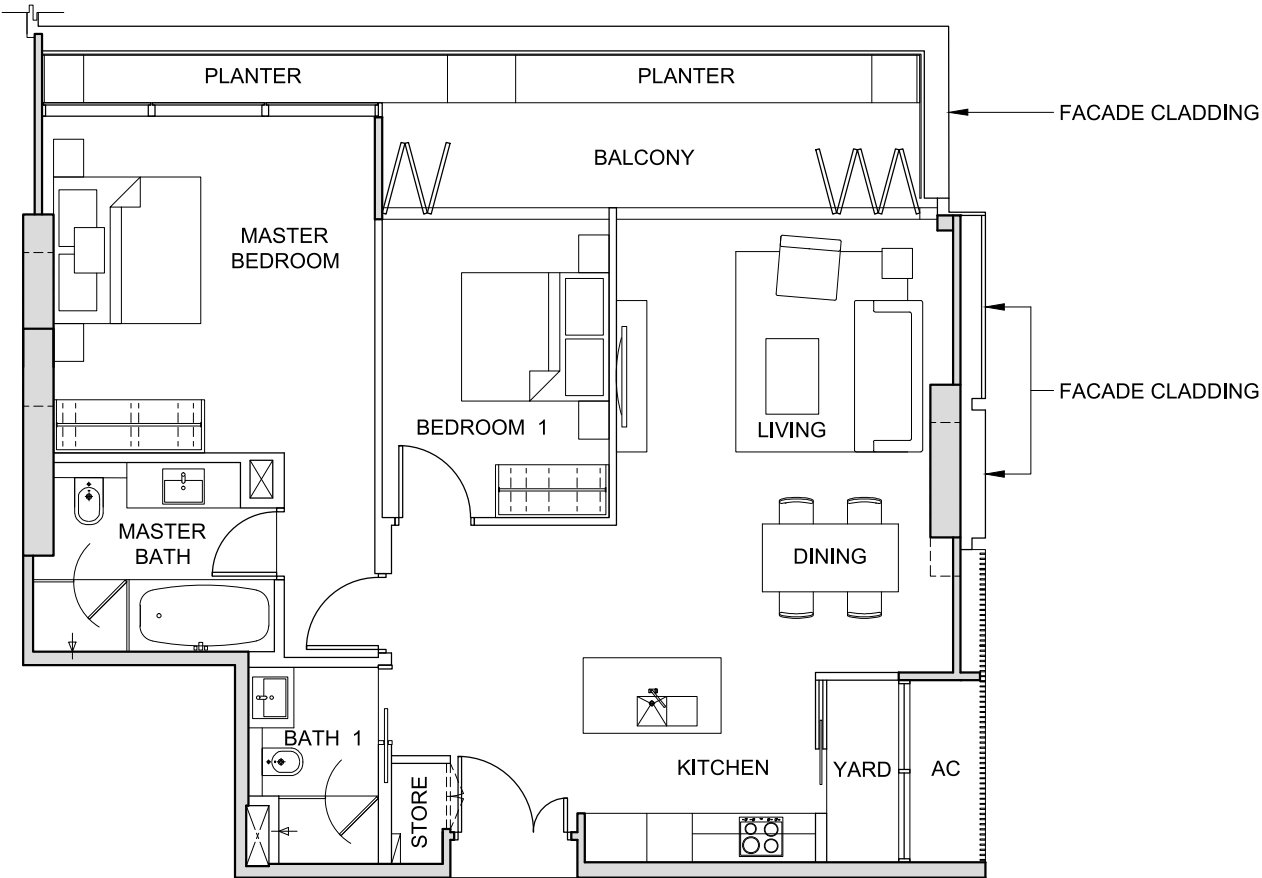
FOR LEVEL 34

The above plans and illustrations are subject to change as may be required or approved by the relevant authorities. All measurements are estimates only and are subject to final survey.

TYPE 2C3

2-BEDROOM  
(125 sq m / 1,346 sq ft)

#35-10



0m 1 2 5  
NOT TO SCALE



FOR LEVEL 35

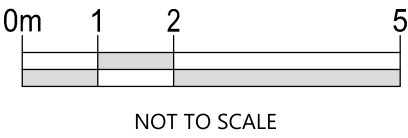
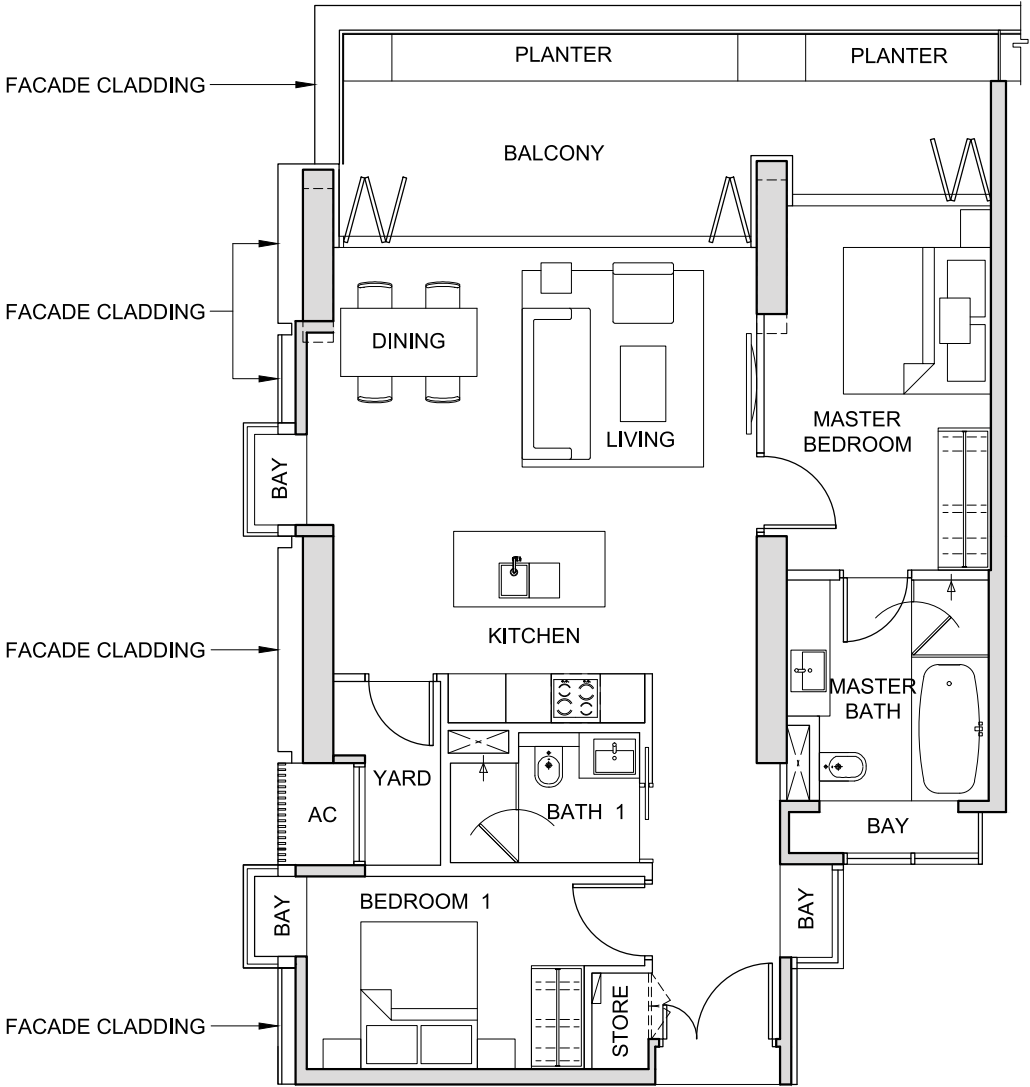
The above plans and illustrations are subject to change as may be required or approved by the relevant authorities. All measurements are estimates only and are subject to final survey.



TYPE 2D1

2-BEDROOM  
(122 sq m / 1,313 sq ft)

#33-01



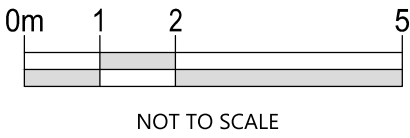
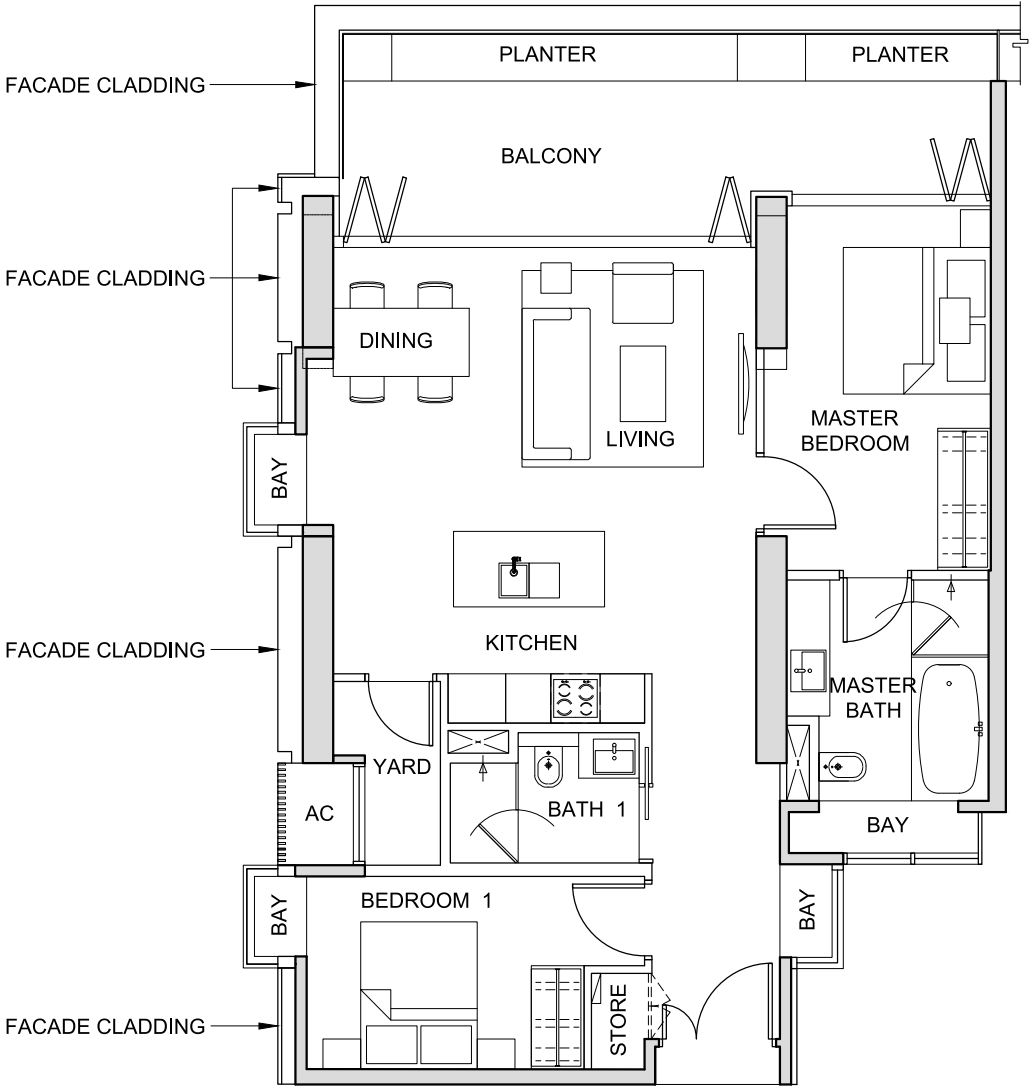
FOR LEVEL 33

The above plans and illustrations are subject to change as may be required or approved by the relevant authorities. All measurements are estimates only and are subject to final survey.

TYPE 2D2

2-BEDROOM  
(122 sq m / 1,313 sq ft)

#34-01



FOR LEVEL 34

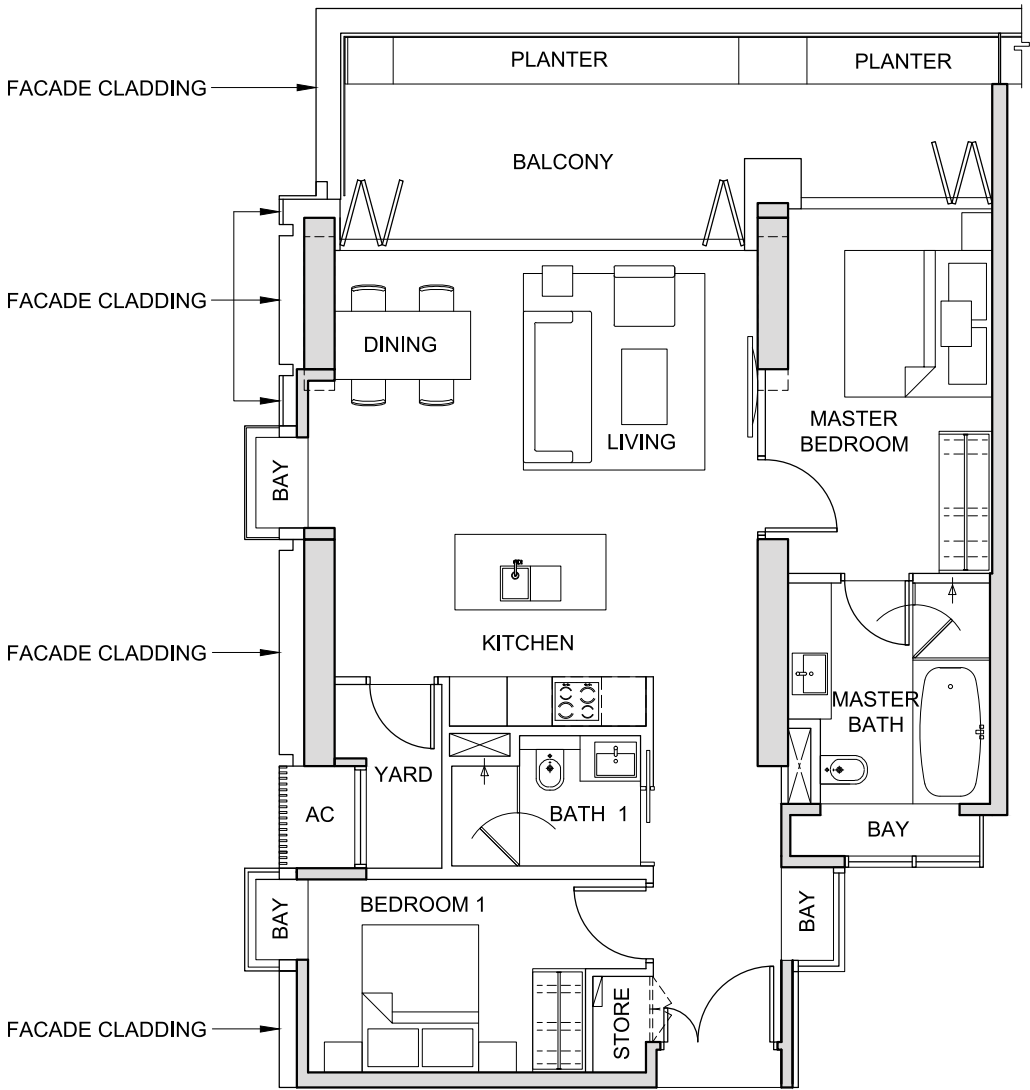
The above plans and illustrations are subject to change as may be required or approved by the relevant authorities. All measurements are estimates only and are subject to final survey.



TYPE 2D3

2-BEDROOM  
(122 sq m / 1,313 sq ft)

#35-01



0m 1 2 5  
NOT TO SCALE



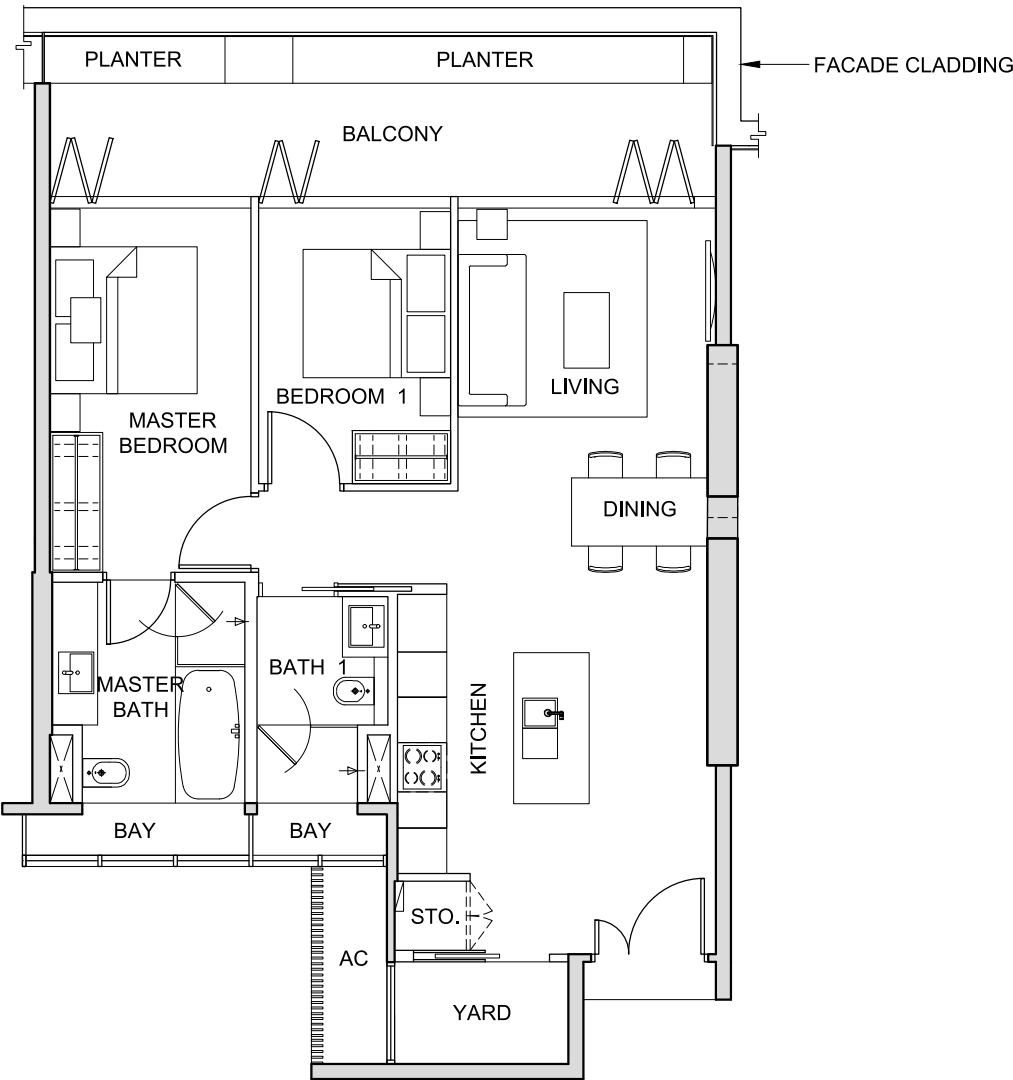
FOR LEVEL 35

The above plans and illustrations are subject to change as may be required or approved by the relevant authorities. All measurements are estimates only and are subject to final survey.

TYPE 2E1

2-BEDROOM  
(113 sq m / 1,216 sq ft)

#33-02



0m 1 2 5  
NOT TO SCALE



FOR LEVEL 33

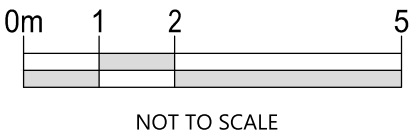
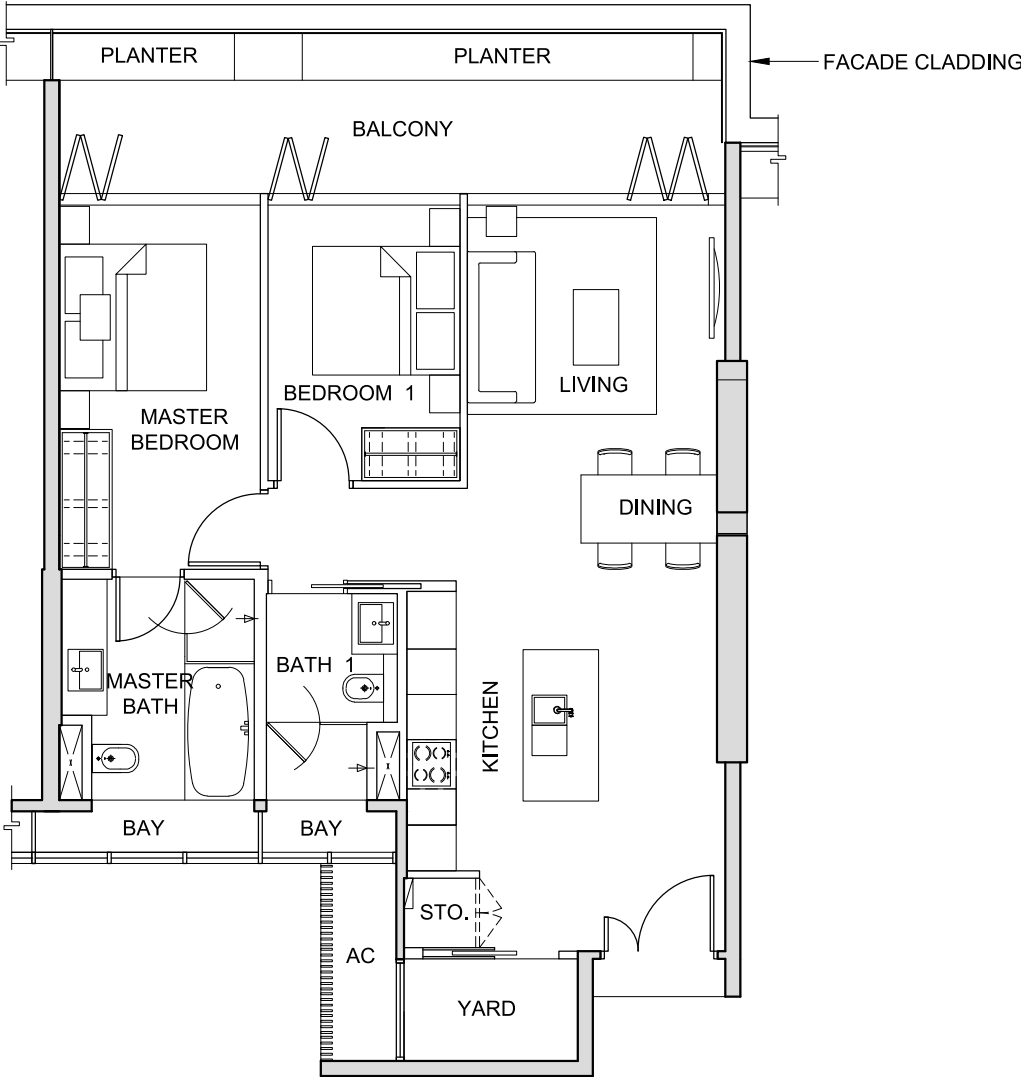
The above plans and illustrations are subject to change as may be required or approved by the relevant authorities. All measurements are estimates only and are subject to final survey.



TYPE 2E2

2-BEDROOM  
(113 sq m / 1,216 sq ft)

#34-02



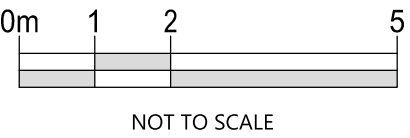
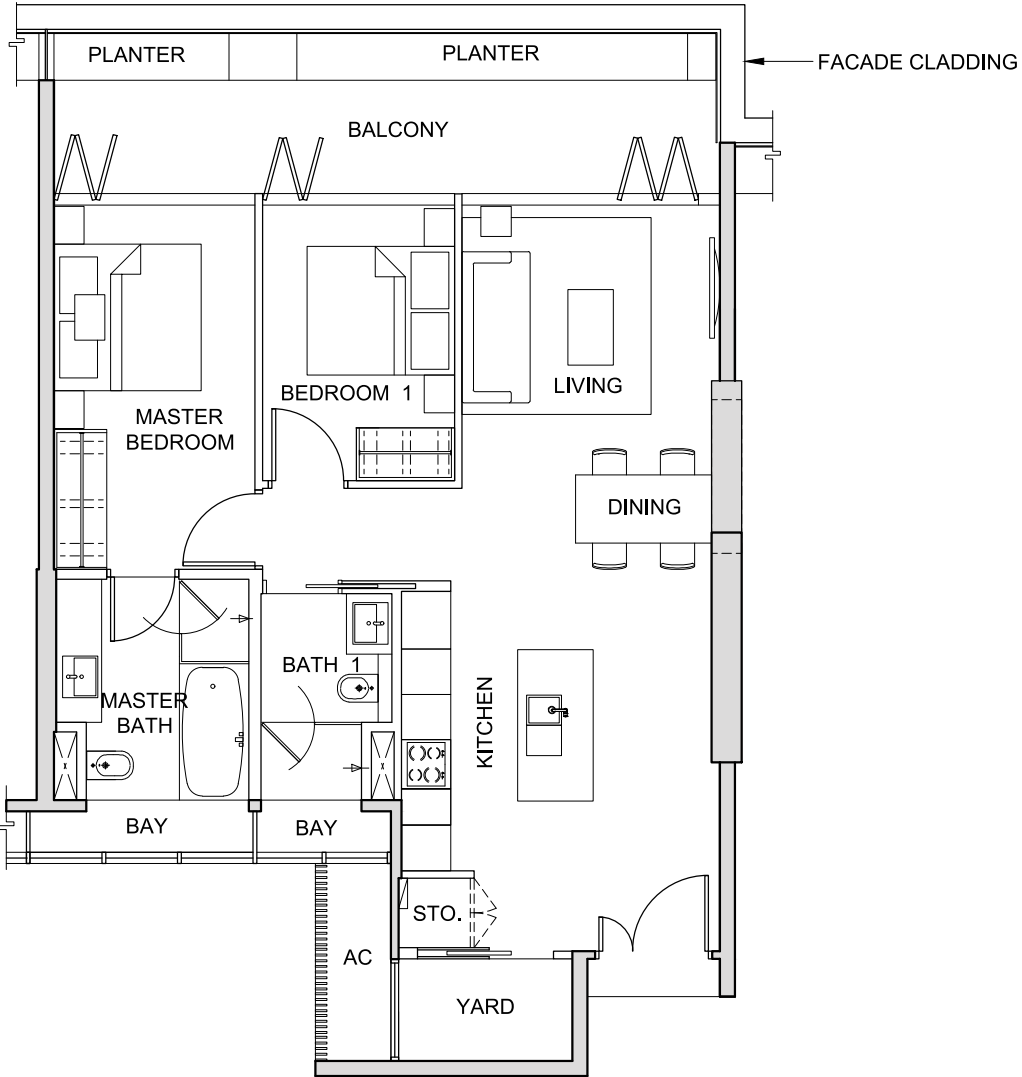
FOR LEVEL 34

The above plans and illustrations are subject to change as may be required or approved by the relevant authorities. All measurements are estimates only and are subject to final survey.

TYPE 2E3

2-BEDROOM  
(113 sq m / 1,216 sq ft)

#35-02



FOR LEVEL 35

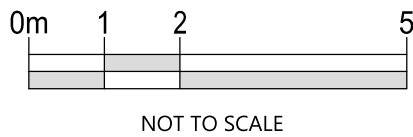
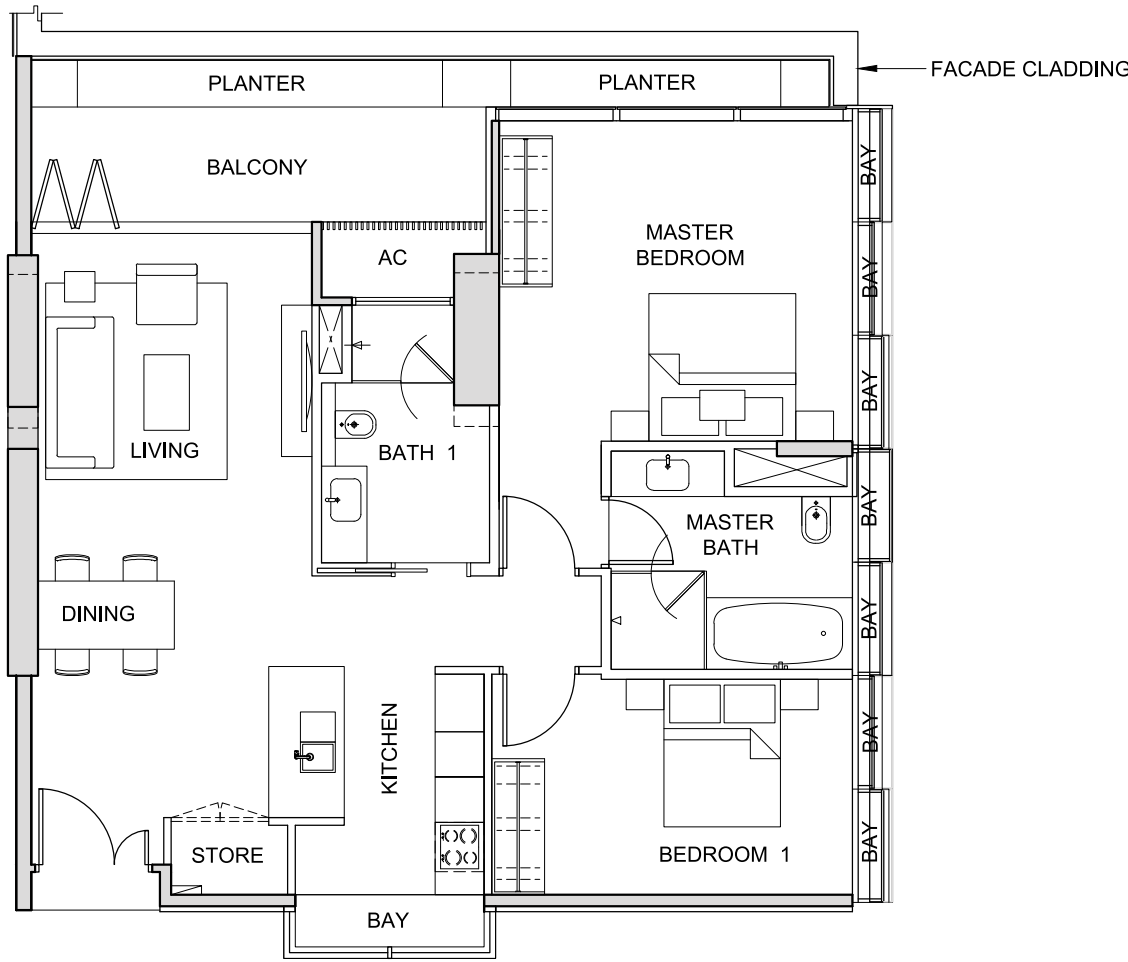
The above plans and illustrations are subject to change as may be required or approved by the relevant authorities. All measurements are estimates only and are subject to final survey.



TYPE 2F1

2-BEDROOM  
(130 sq m / 1,399 sq ft)

#33-03

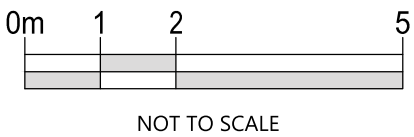
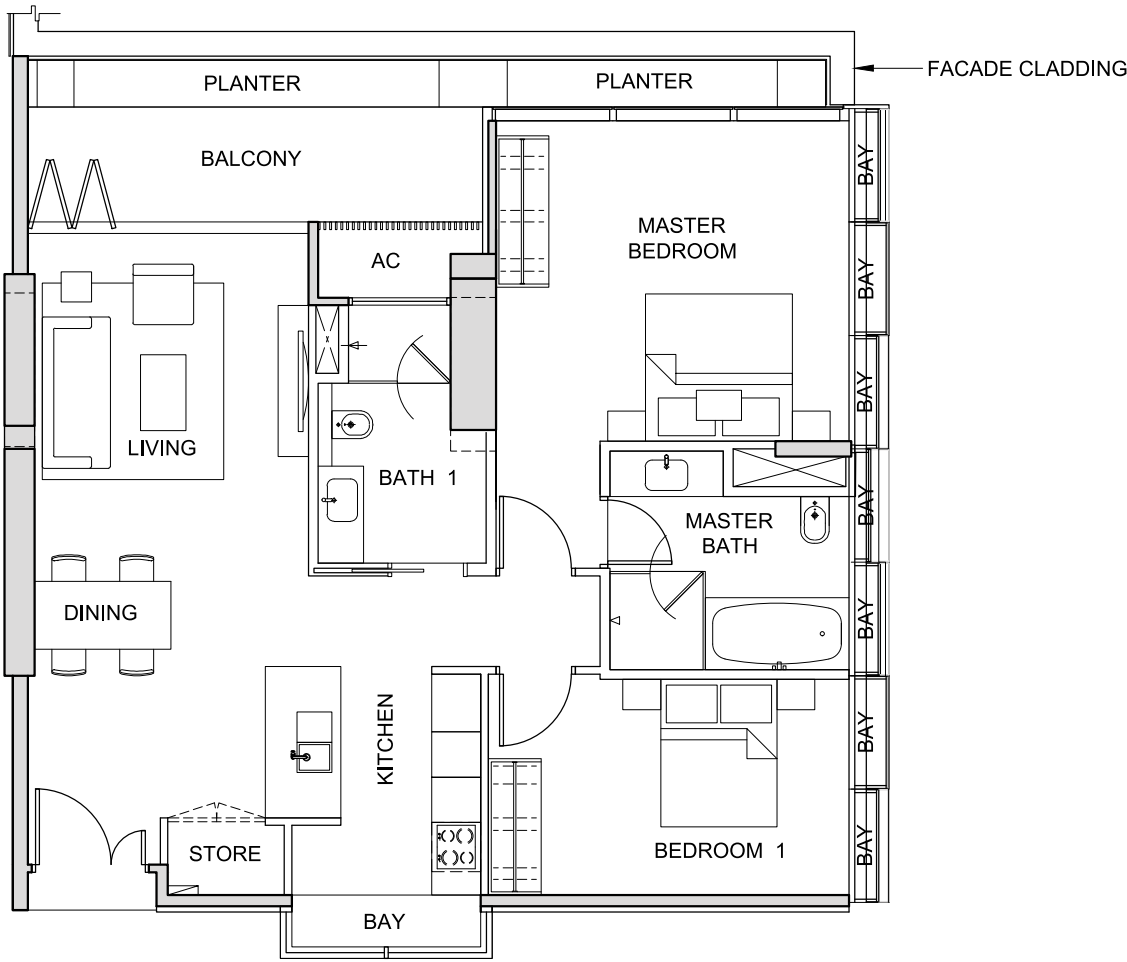


The above plans and illustrations are subject to change as may be required or approved by the relevant authorities. All measurements are estimates only and are subject to final survey.

TYPE 2F2

2-BEDROOM  
(130 sq m / 1,399 sq ft)

#34-03



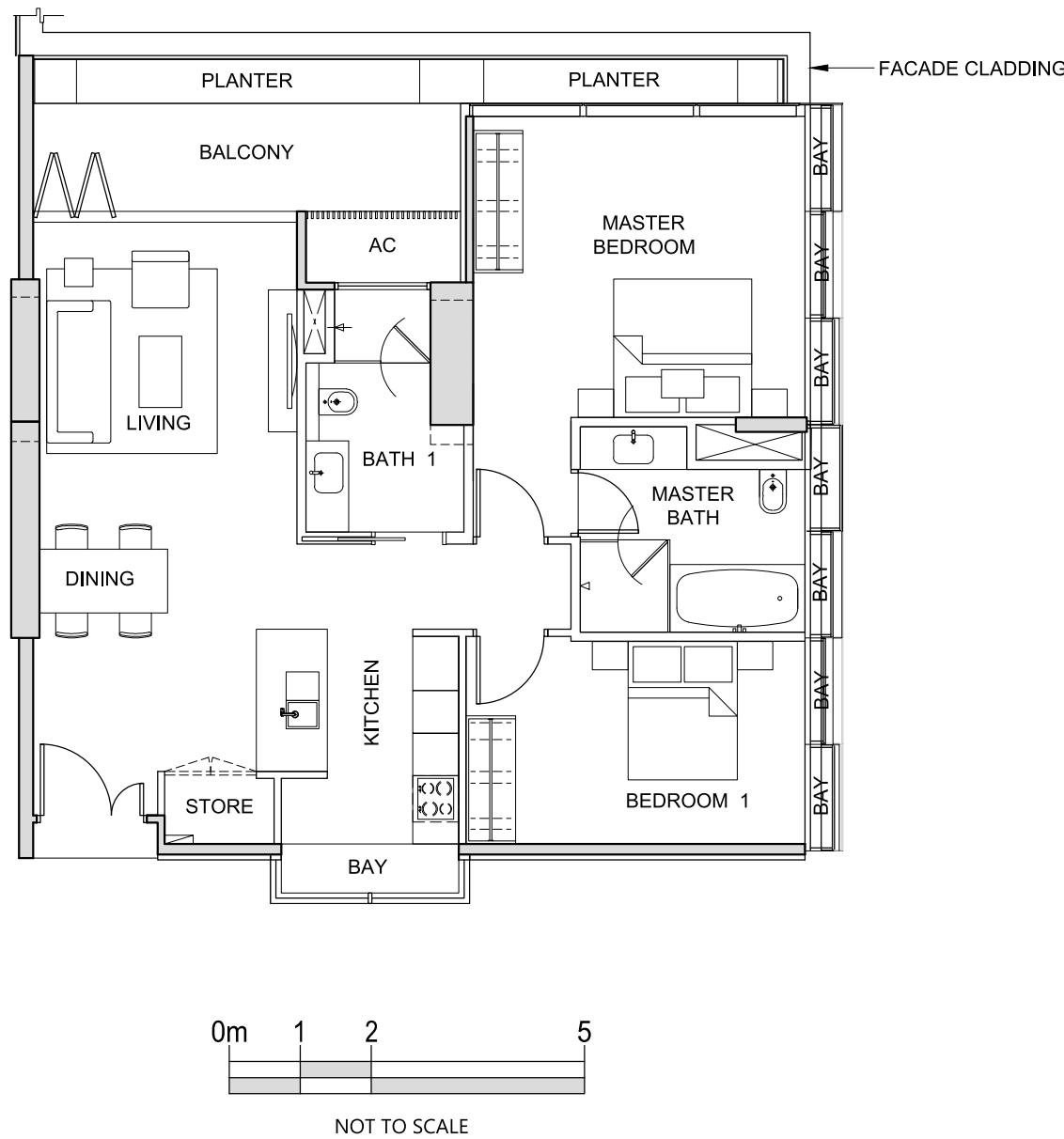
The above plans and illustrations are subject to change as may be required or approved by the relevant authorities. All measurements are estimates only and are subject to final survey.



TYPE 2F3

2-BEDROOM  
(130 sq m / 1,399 sq ft)

#35-03

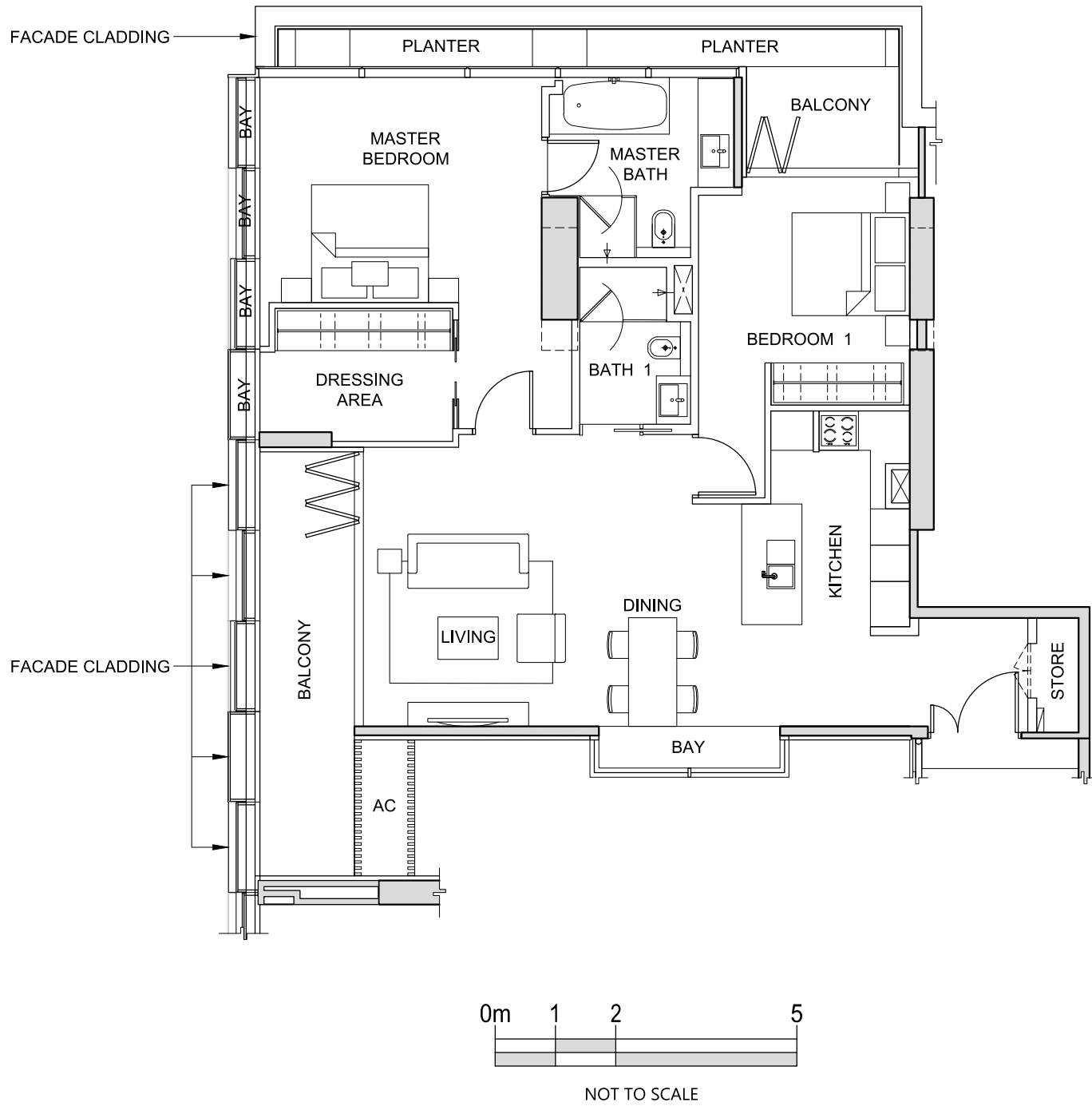


The above plans and illustrations are subject to change as may be required or approved by the relevant authorities. All measurements are estimates only and are subject to final survey.

TYPE 2G1

2-BEDROOM  
(151 sq m / 1,625 sq ft)

#33-09



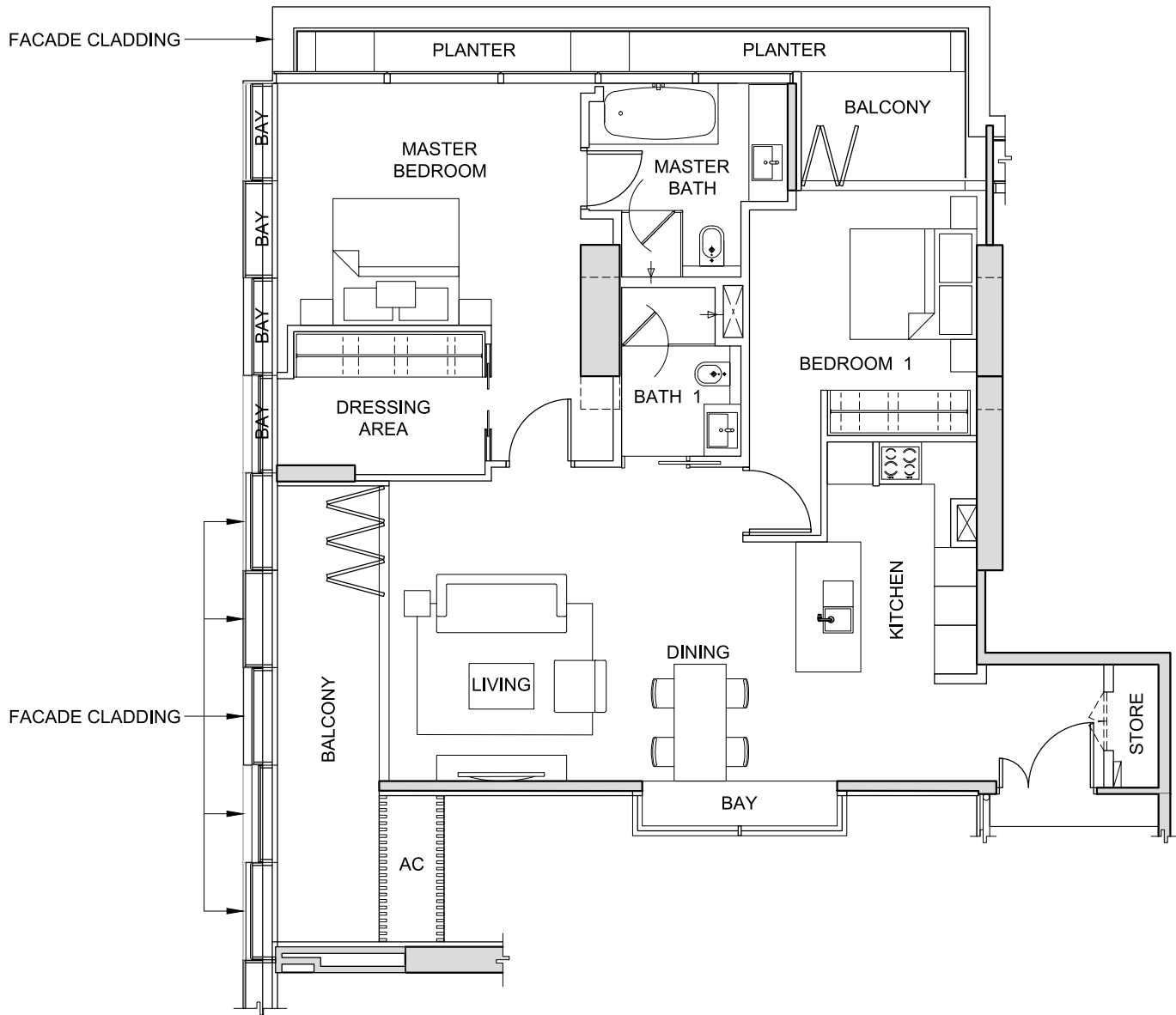
The above plans and illustrations are subject to change as may be required or approved by the relevant authorities. All measurements are estimates only and are subject to final survey.



TYPE 2G2

2-BEDROOM  
(151 sq m / 1,625 sq ft)

#34-09



0m 1 2 5  
NOT TO SCALE



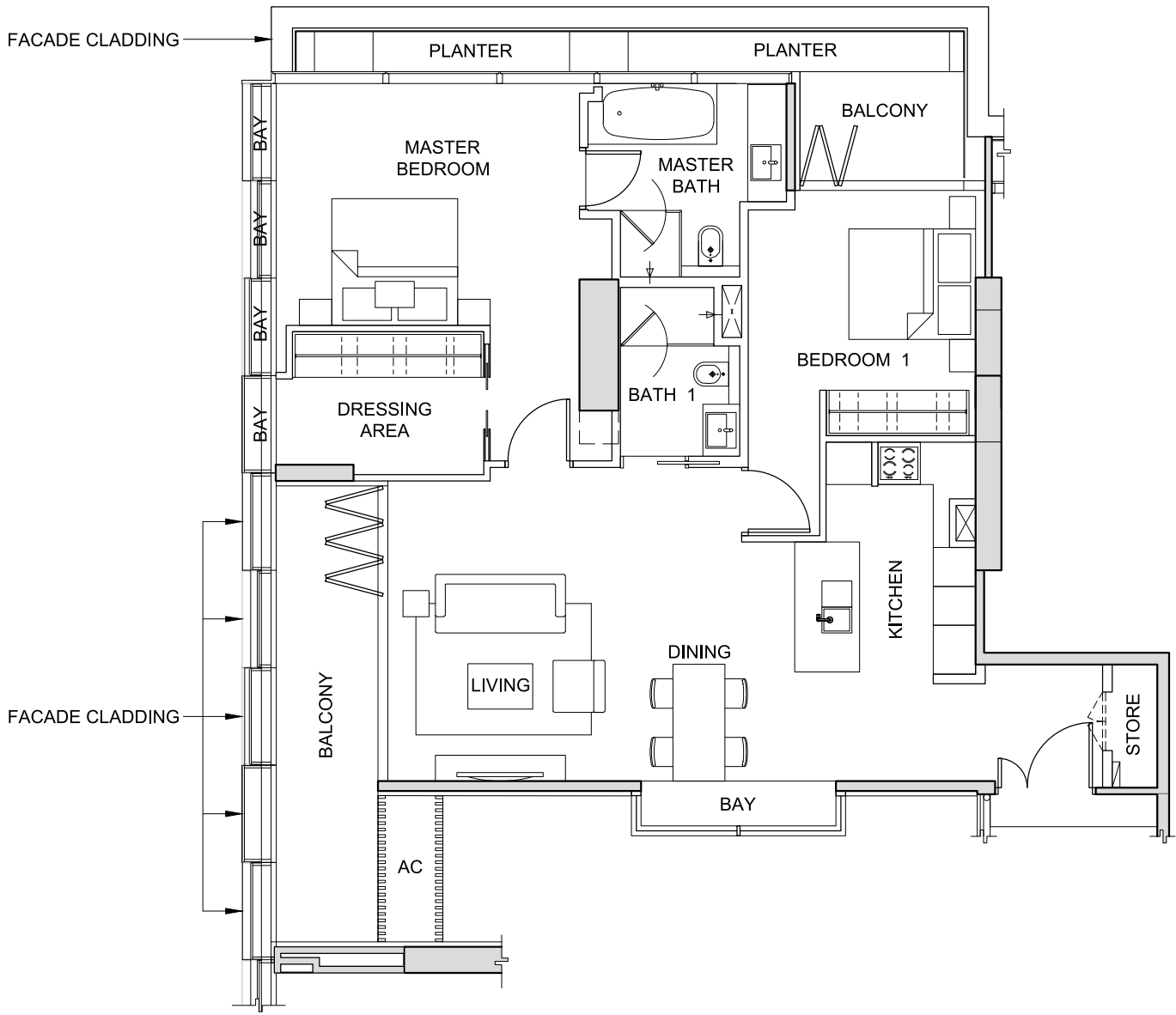
FOR LEVEL 34

The above plans and illustrations are subject to change as may be required or approved by the relevant authorities. All measurements are estimates only and are subject to final survey.

TYPE 2G3

2-BEDROOM  
(151 sq m / 1,625 sq ft)

#35-09



0m 1 2 5  
NOT TO SCALE



FOR LEVEL 35

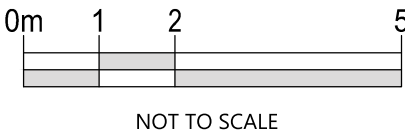
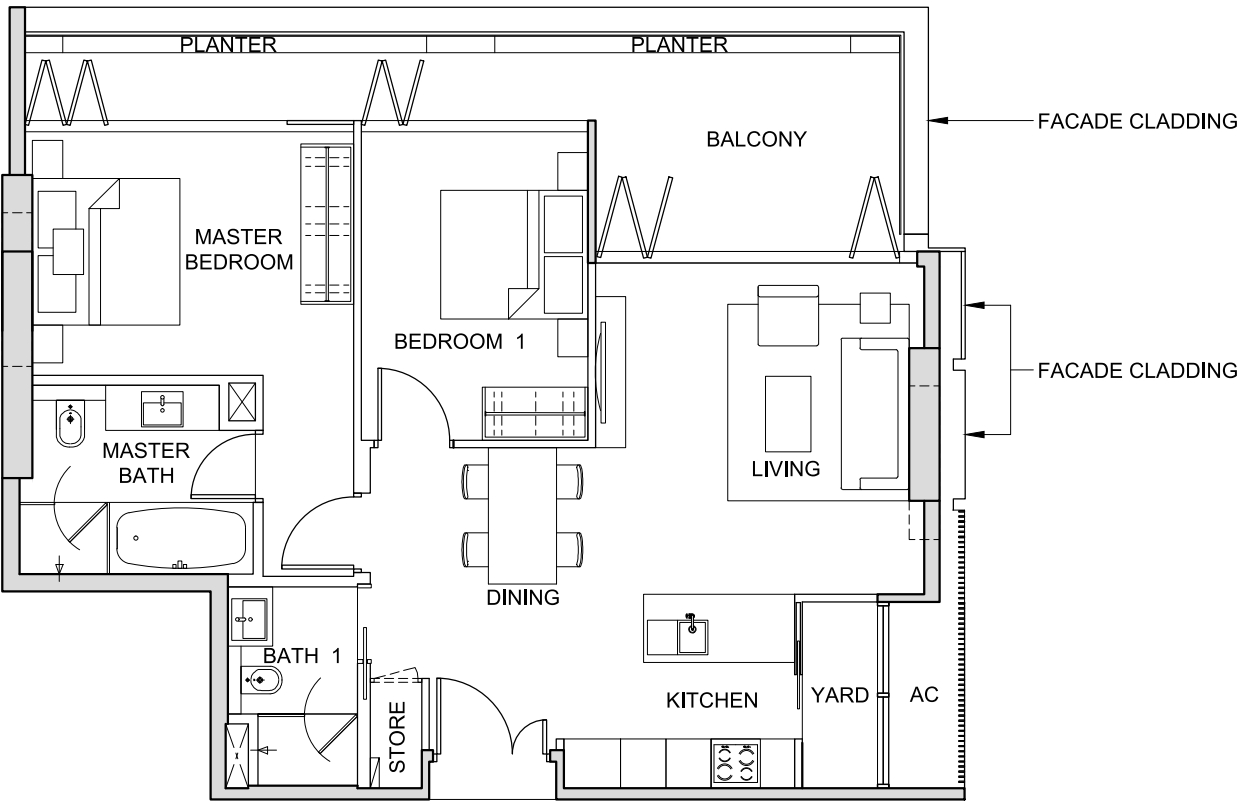
The above plans and illustrations are subject to change as may be required or approved by the relevant authorities. All measurements are estimates only and are subject to final survey.



TYPE 2H1

2-BEDROOM  
(116 sq m / 1,249 sq ft)

#36-10



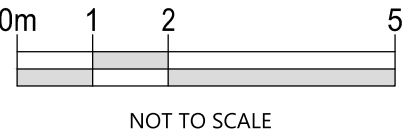
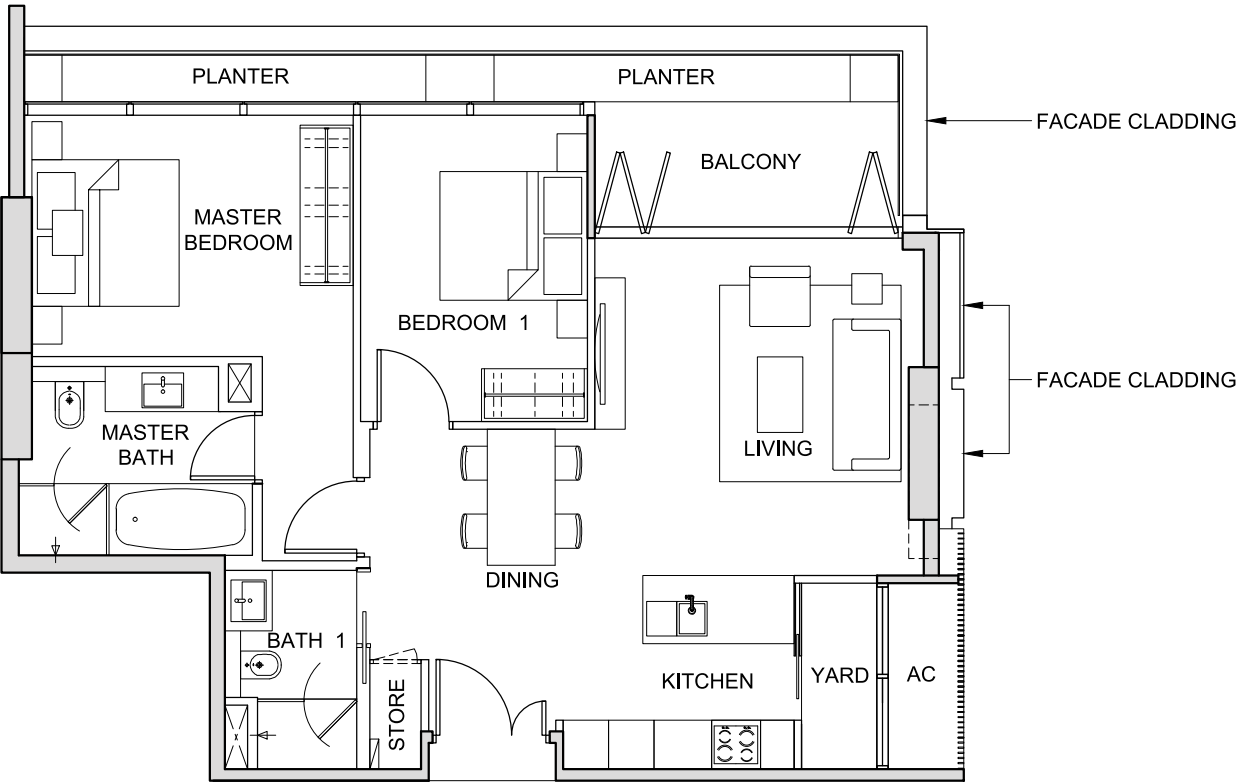
FOR LEVEL 36

The above plans and illustrations are subject to change as may be required or approved by the relevant authorities. All measurements are estimates only and are subject to final survey.

TYPE 2H2

2-BEDROOM  
(110 sq m / 1,184 sq ft)

#37-10



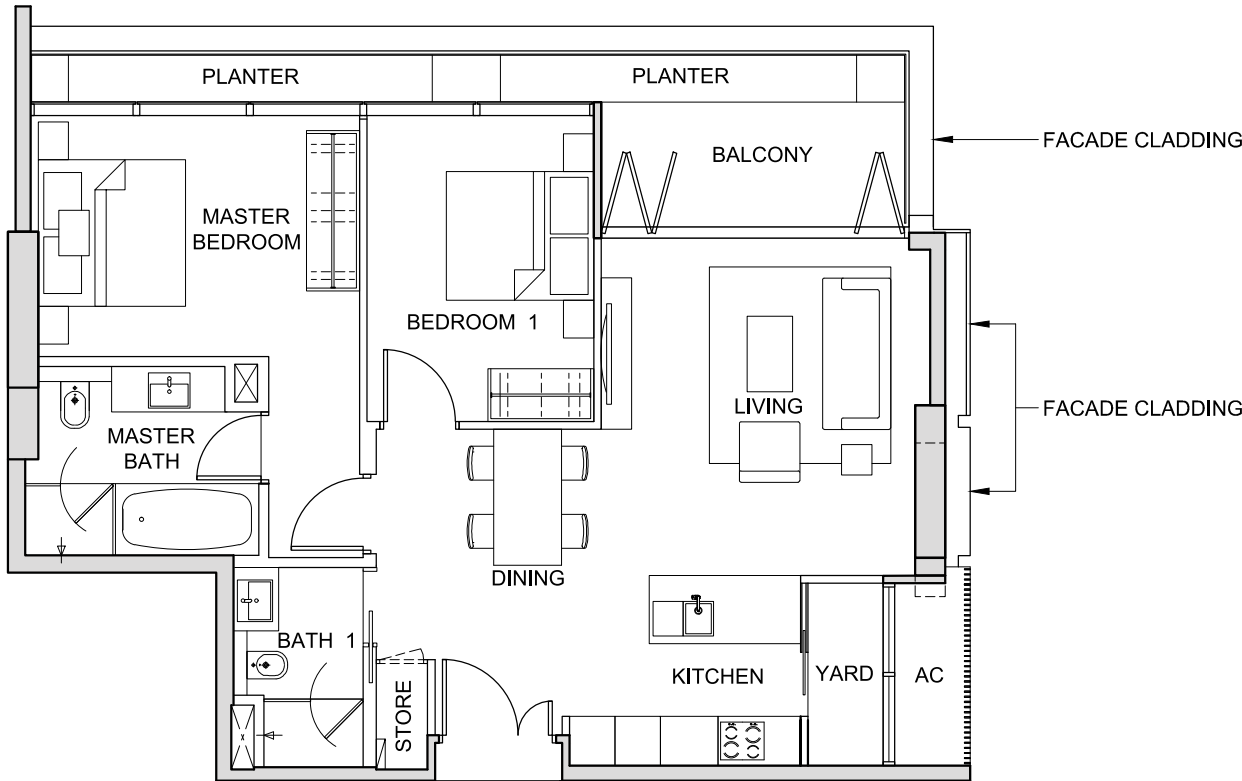
FOR LEVEL 37

The above plans and illustrations are subject to change as may be required or approved by the relevant authorities. All measurements are estimates only and are subject to final survey.

TYPE 2H3

2-BEDROOM  
(110 sq m / 1,184 sq ft)

#38-10



NOT TO SCALE



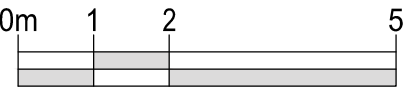
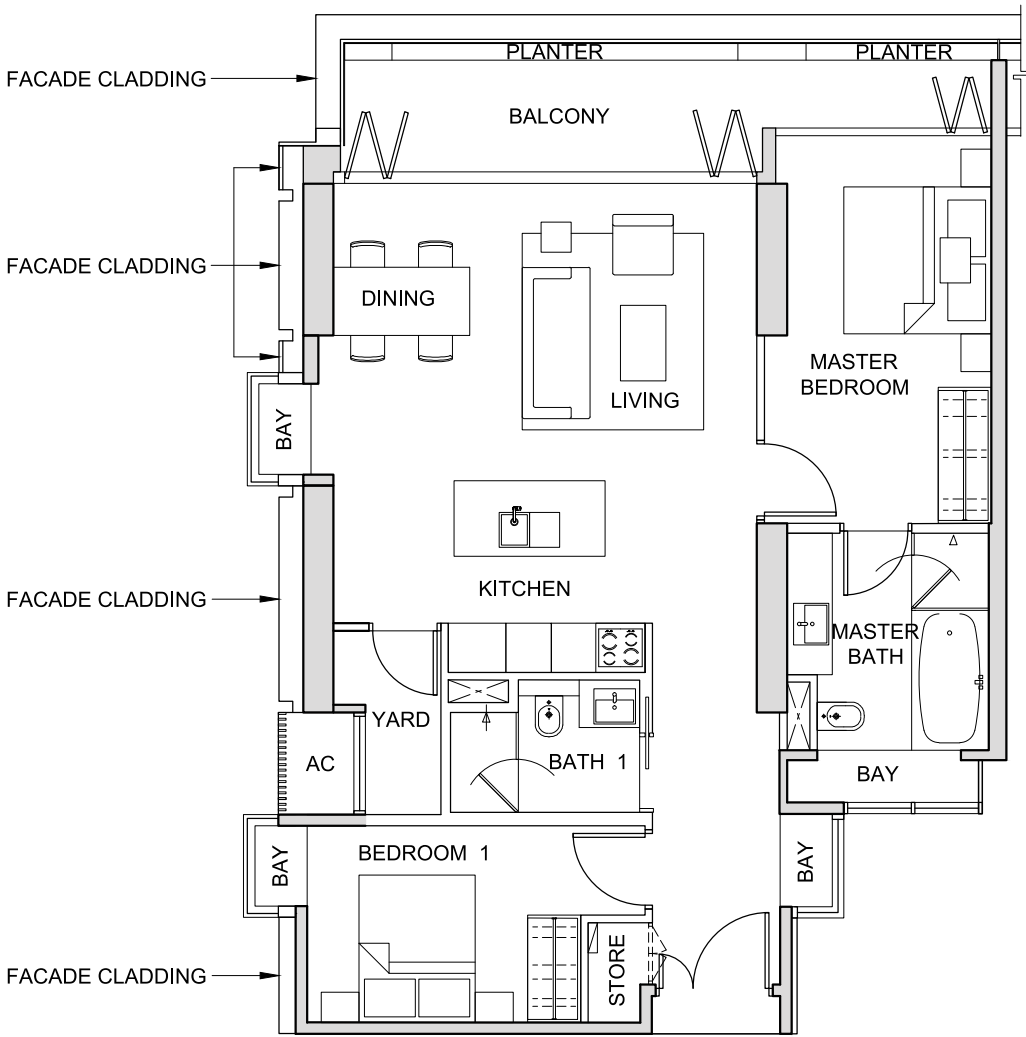
FOR LEVEL 38

The above plans and illustrations are subject to change as may be required or approved by the relevant authorities. All measurements are estimates only and are subject to final survey.

TYPE 2J1

2-BEDROOM  
(114 sq m / 1,227 sq ft)

#36-01



NOT TO SCALE



FOR LEVEL 36

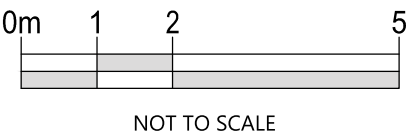
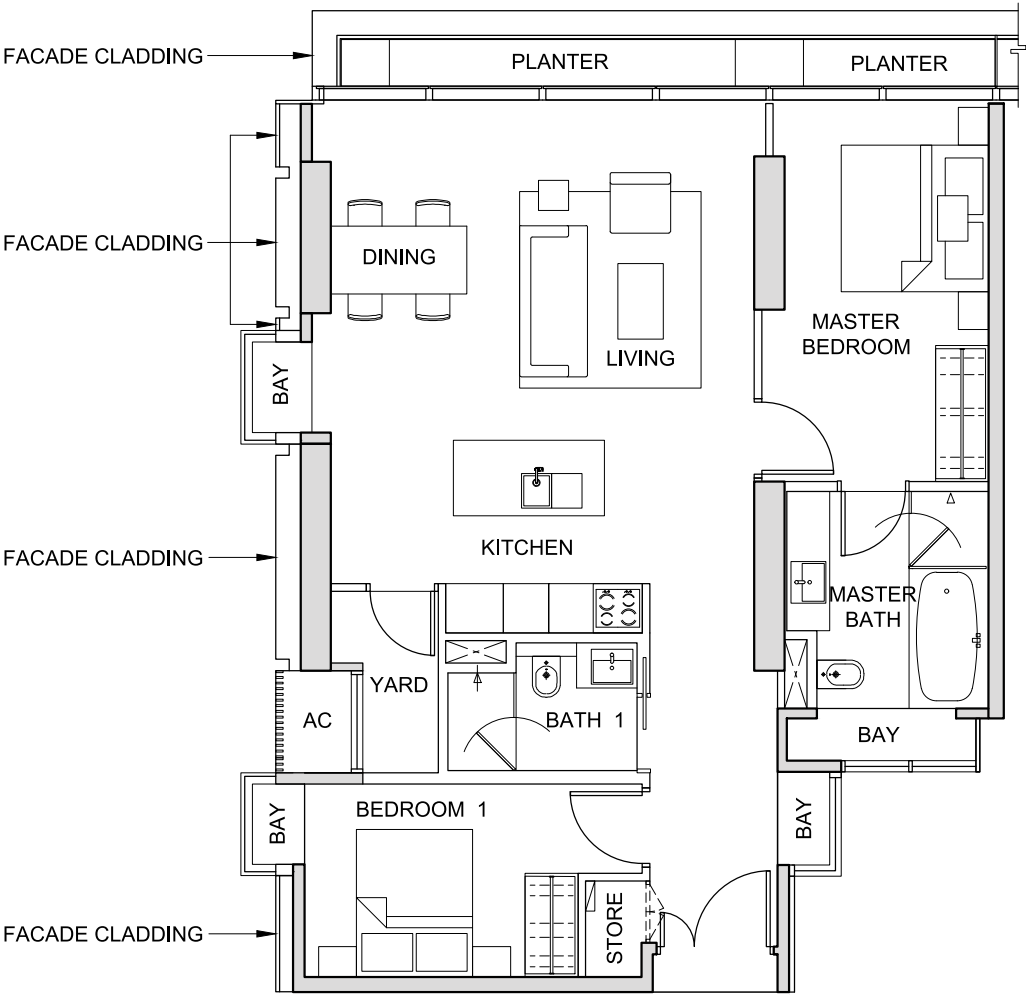
The above plans and illustrations are subject to change as may be required or approved by the relevant authorities. All measurements are estimates only and are subject to final survey.



TYPE 2J2

2-BEDROOM  
(110 sq m / 1,184 sq ft)

#37-01



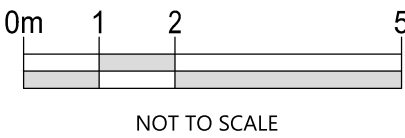
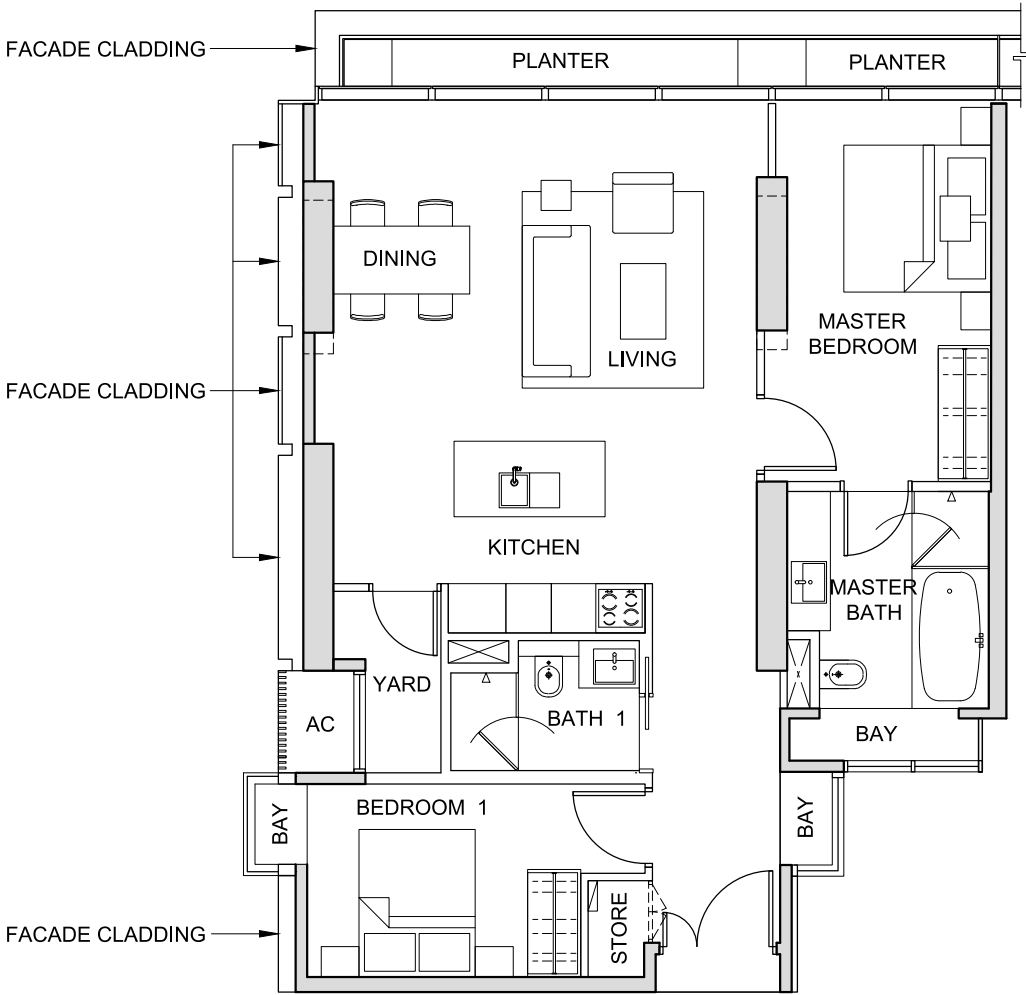
FOR LEVEL 37

The above plans and illustrations are subject to change as may be required or approved by the relevant authorities. All measurements are estimates only and are subject to final survey.

TYPE 2J3

2-BEDROOM  
(109 sq m / 1,173 sq ft)

#38-01



FOR LEVEL 38

The above plans and illustrations are subject to change as may be required or approved by the relevant authorities. All measurements are estimates only and are subject to final survey.

TYPE 2J4

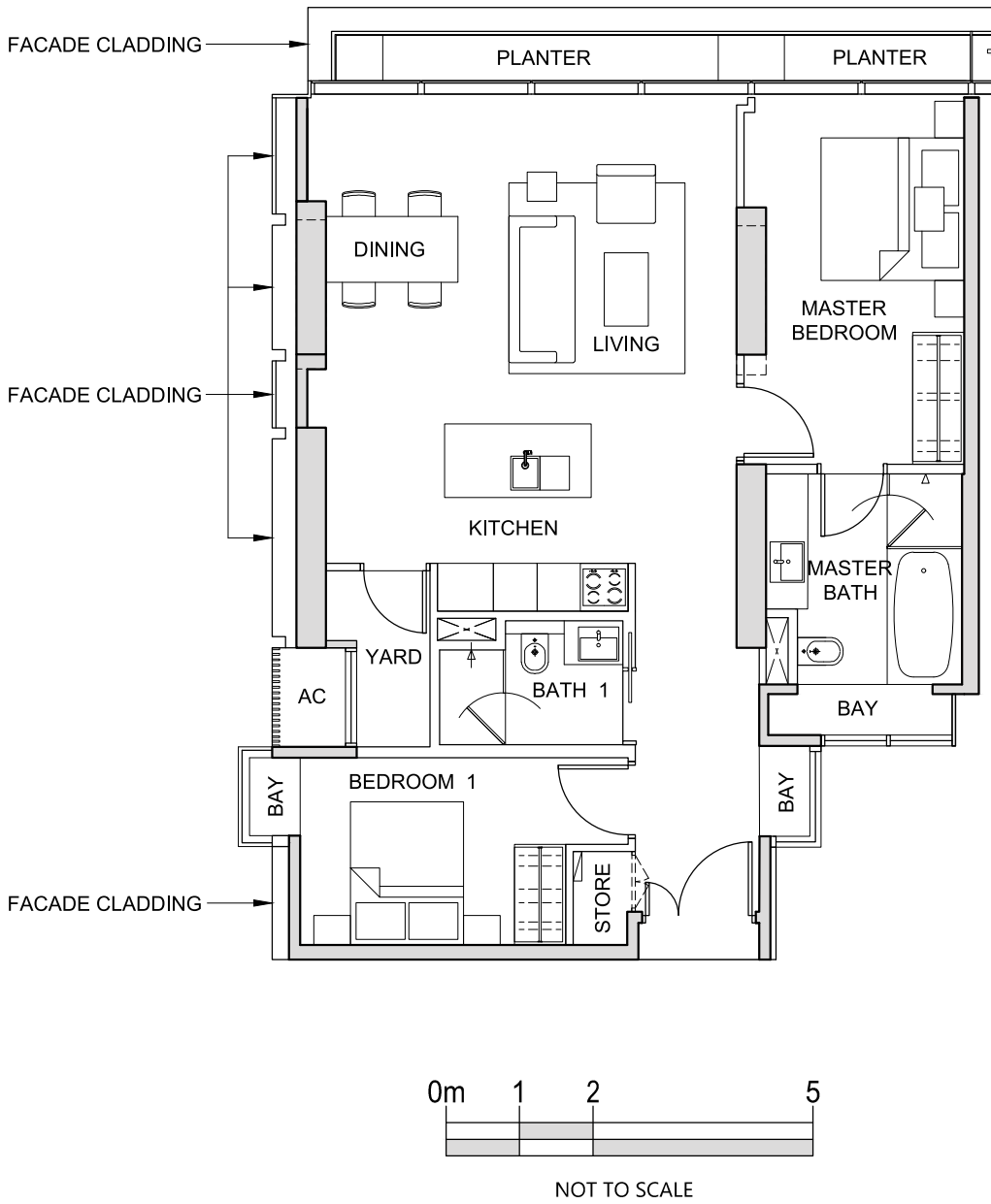
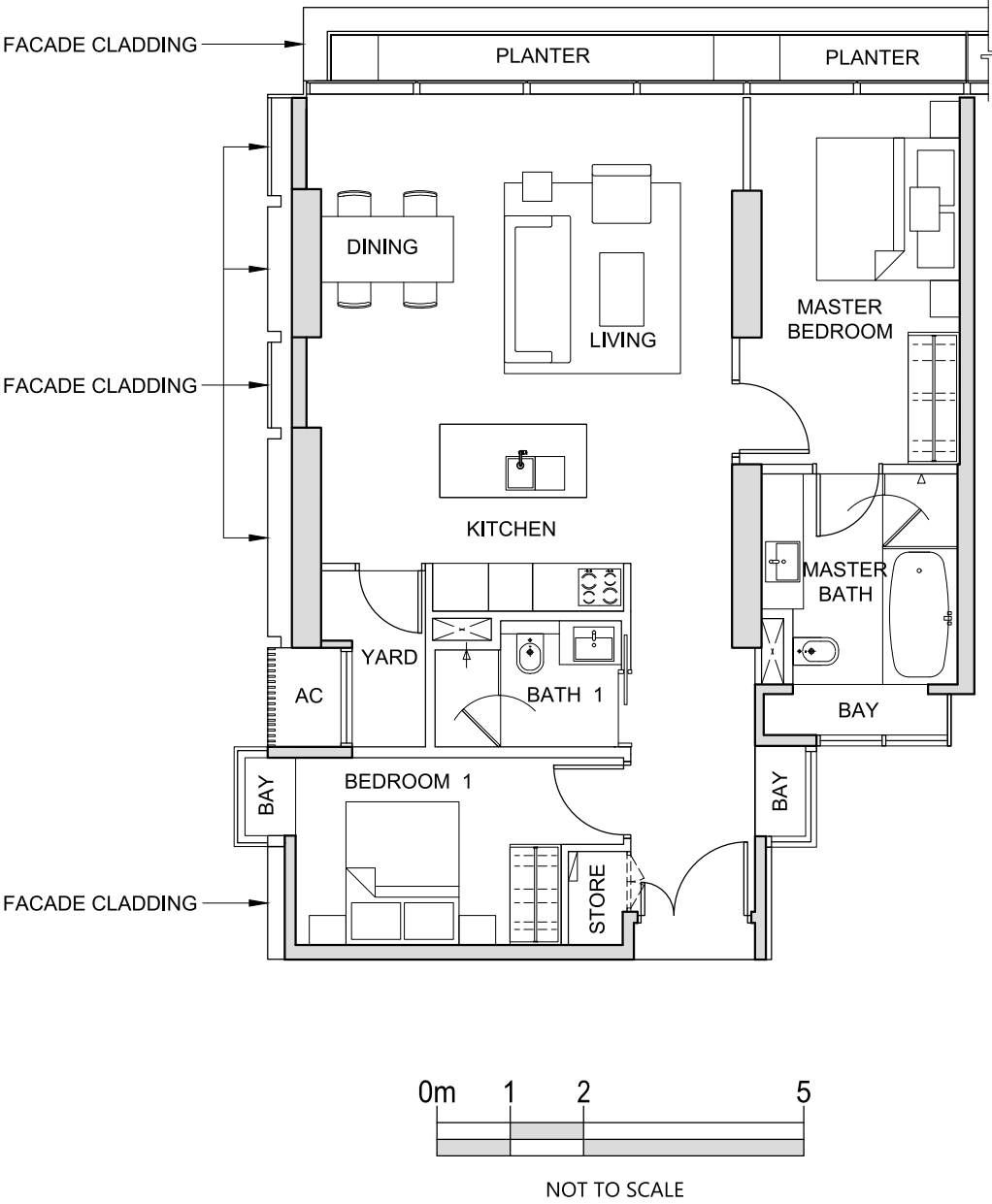
2-BEDROOM  
(109 sq m / 1,173 sq ft)

#39-01

TYPE 2J5

2-BEDROOM  
(109 sq m / 1,173 sq ft)

#40-01



The above plans and illustrations are subject to change as may be required or approved by the relevant authorities. All measurements are estimates only and are subject to final survey.



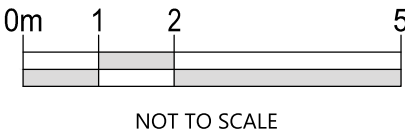
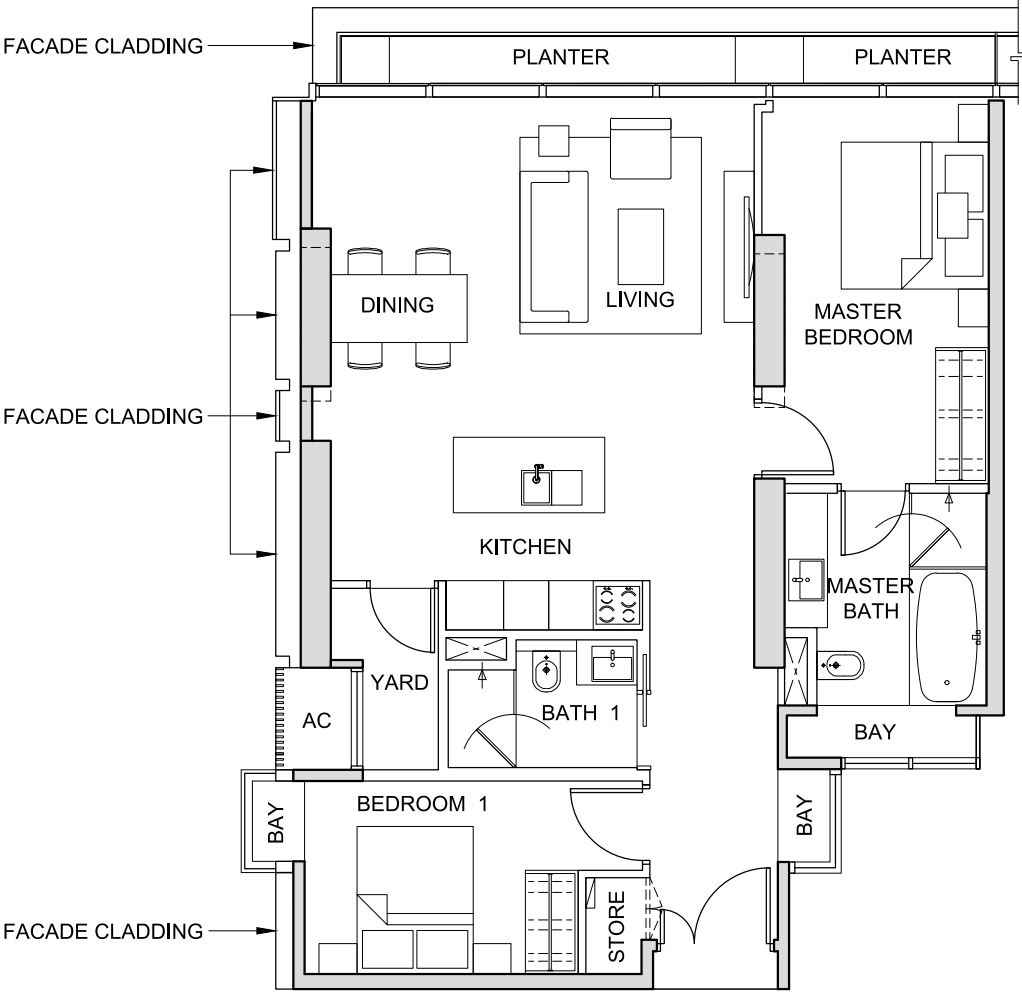
The above plans and illustrations are subject to change as may be required or approved by the relevant authorities. All measurements are estimates only and are subject to final survey.



TYPE 2J6

2-BEDROOM  
(109 sq m / 1,173 sq ft)

#41-01

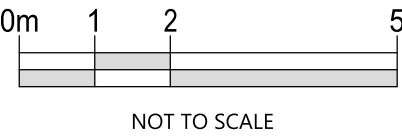
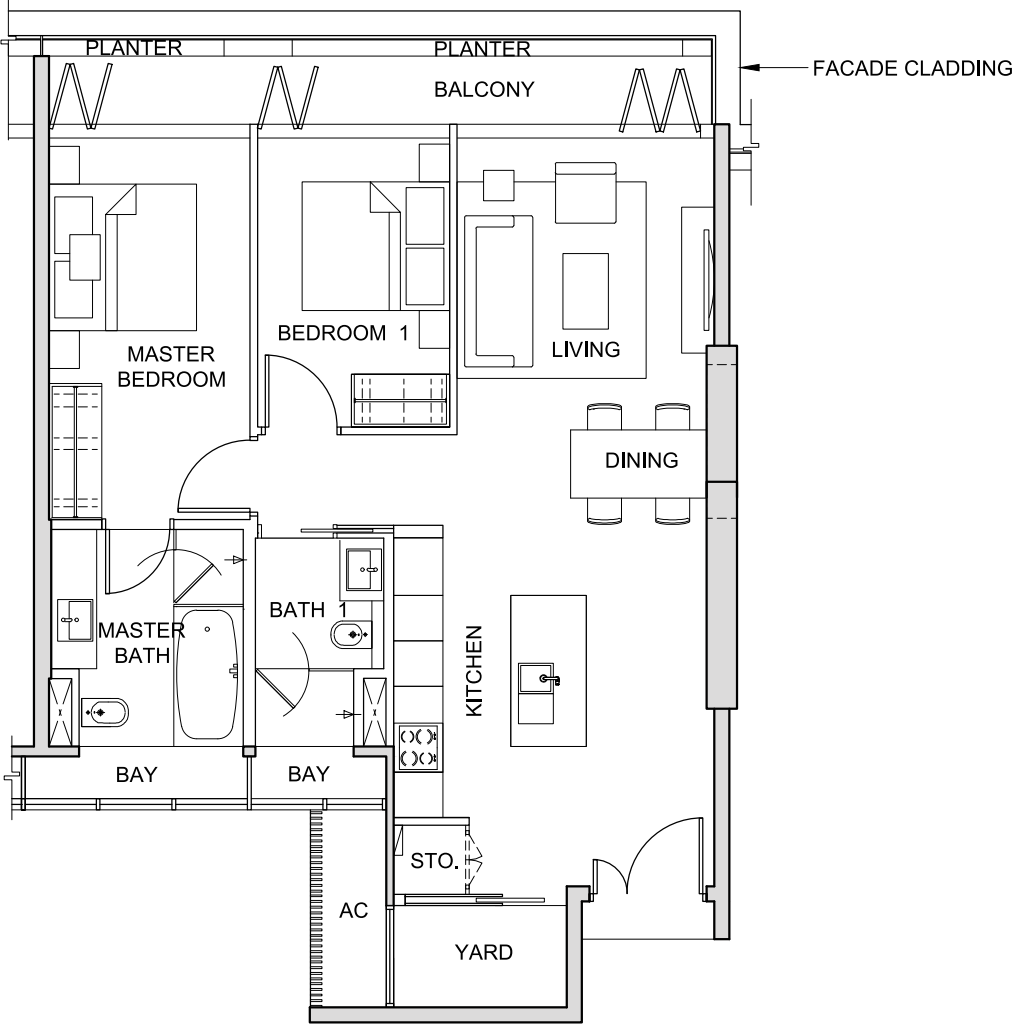


The above plans and illustrations are subject to change as may be required or approved by the relevant authorities. All measurements are estimates only and are subject to final survey.

TYPE 2K1

2-BEDROOM  
(106 sq m / 1,141 sq ft)

#36-02

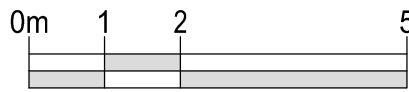
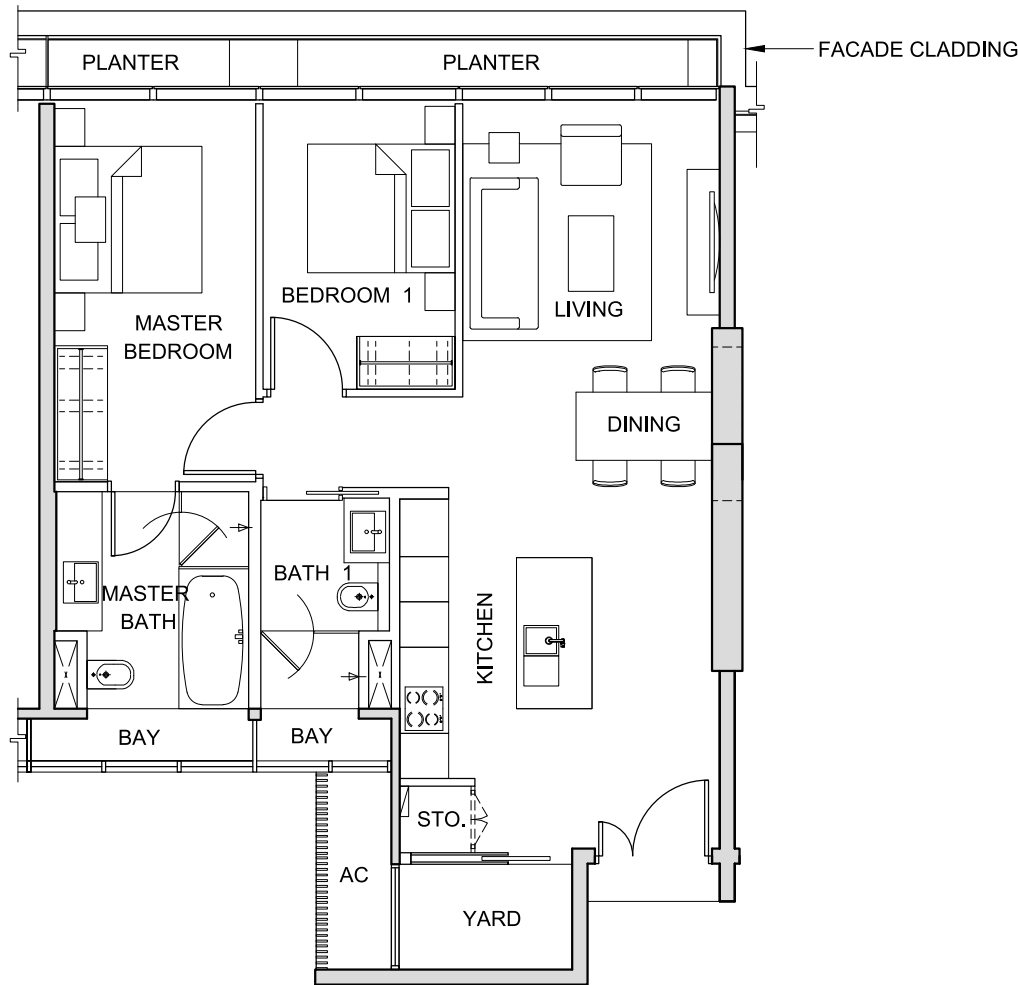


The above plans and illustrations are subject to change as may be required or approved by the relevant authorities. All measurements are estimates only and are subject to final survey.

TYPE 2K2

2-BEDROOM  
(101 sq m / 1,087 sq ft)

#37-02



NOT TO SCALE



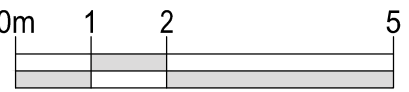
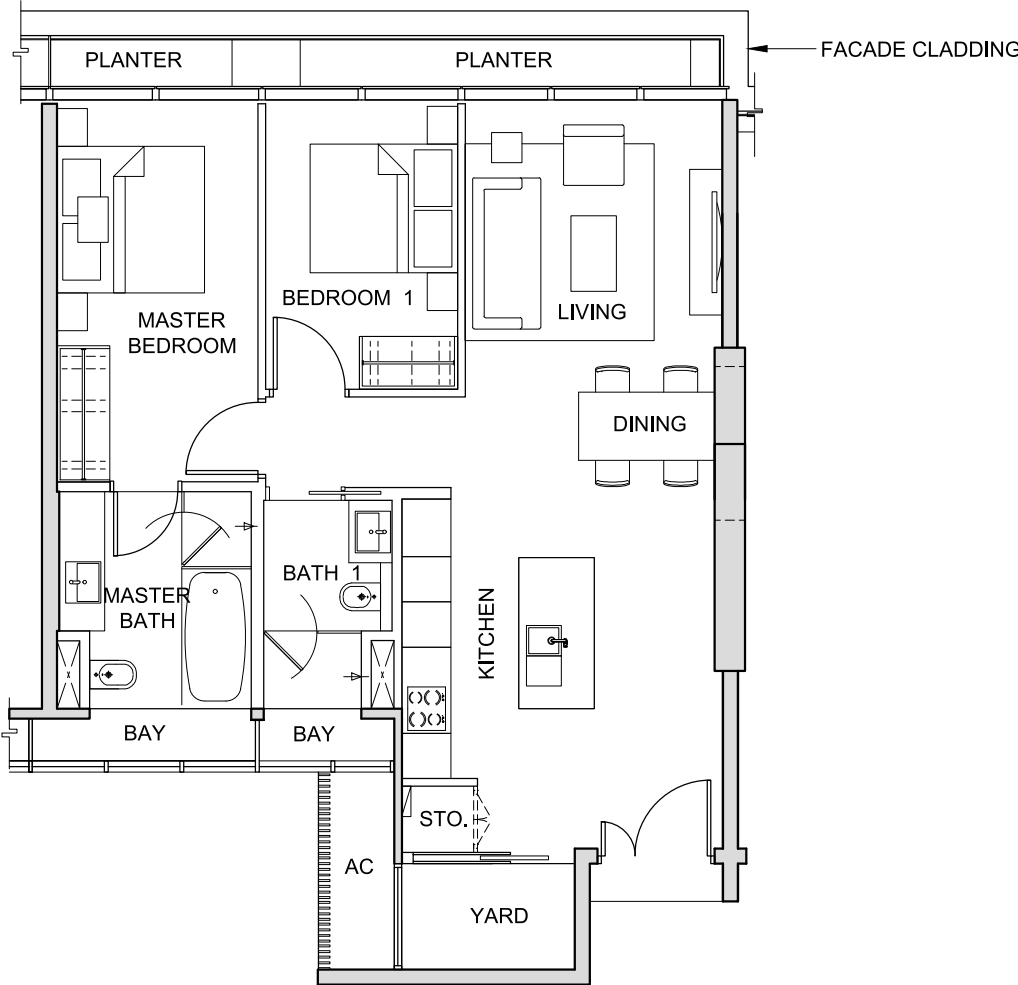
FOR LEVEL 37

The above plans and illustrations are subject to change as may be required or approved by the relevant authorities. All measurements are estimates only and are subject to final survey.

TYPE 2K3

2-BEDROOM  
(101 sq m / 1,087 sq ft)

#38-02



NOT TO SCALE



FOR LEVEL 38

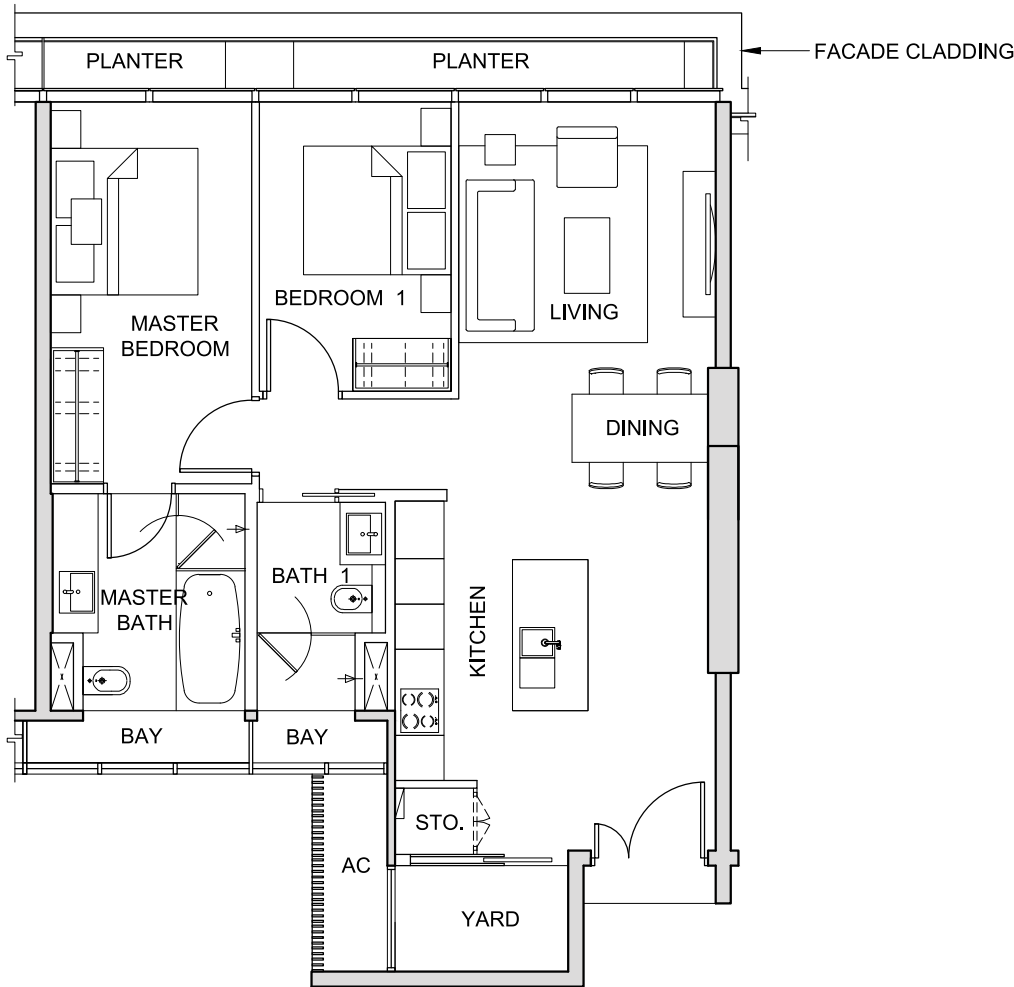
The above plans and illustrations are subject to change as may be required or approved by the relevant authorities. All measurements are estimates only and are subject to final survey.



TYPE 2K4

2-BEDROOM  
(101 sq m / 1,087 sq ft)

#39-02



NOT TO SCALE



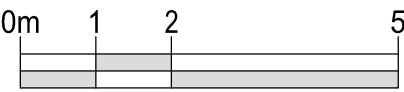
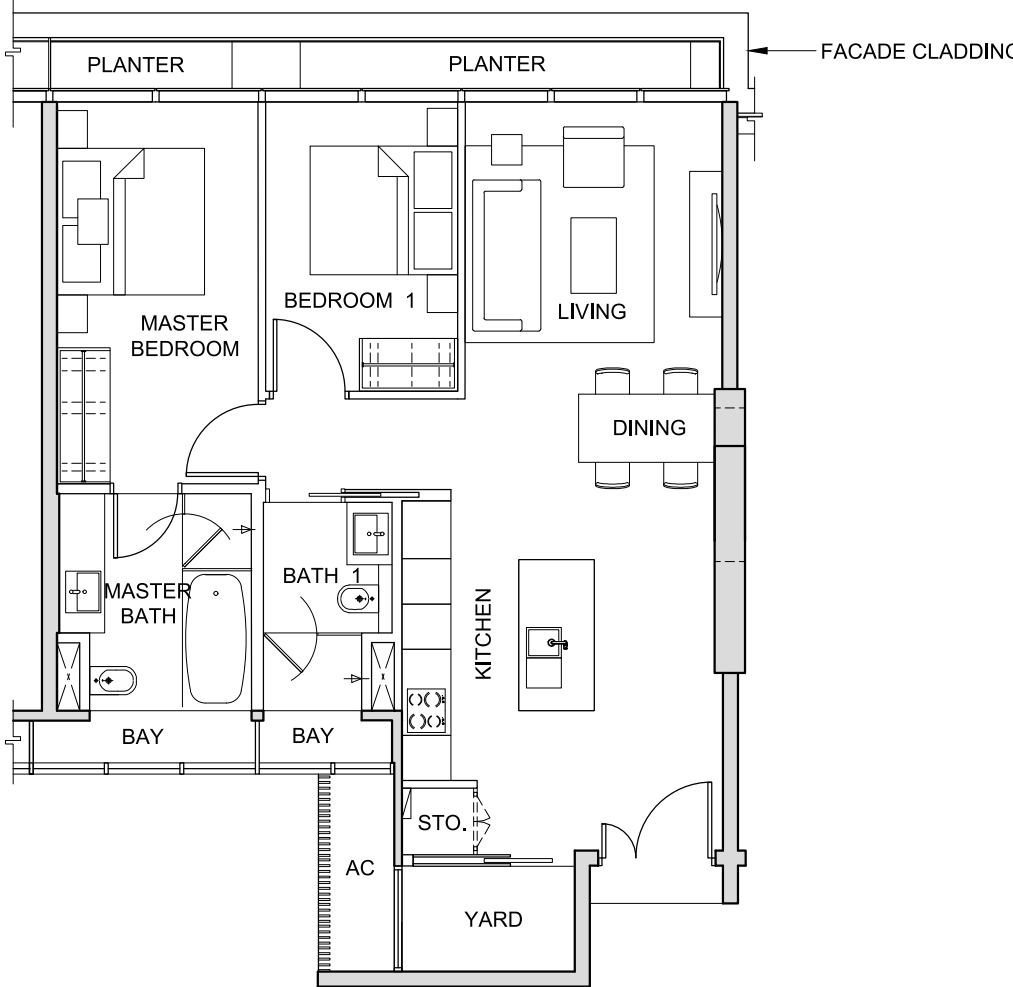
FOR LEVEL 39

The above plans and illustrations are subject to change as may be required or approved by the relevant authorities. All measurements are estimates only and are subject to final survey.

TYPE 2K5

2-BEDROOM  
(101 sq m / 1,087 sq ft)

#40-02



NOT TO SCALE



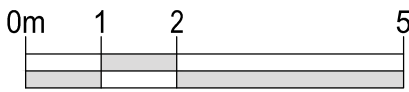
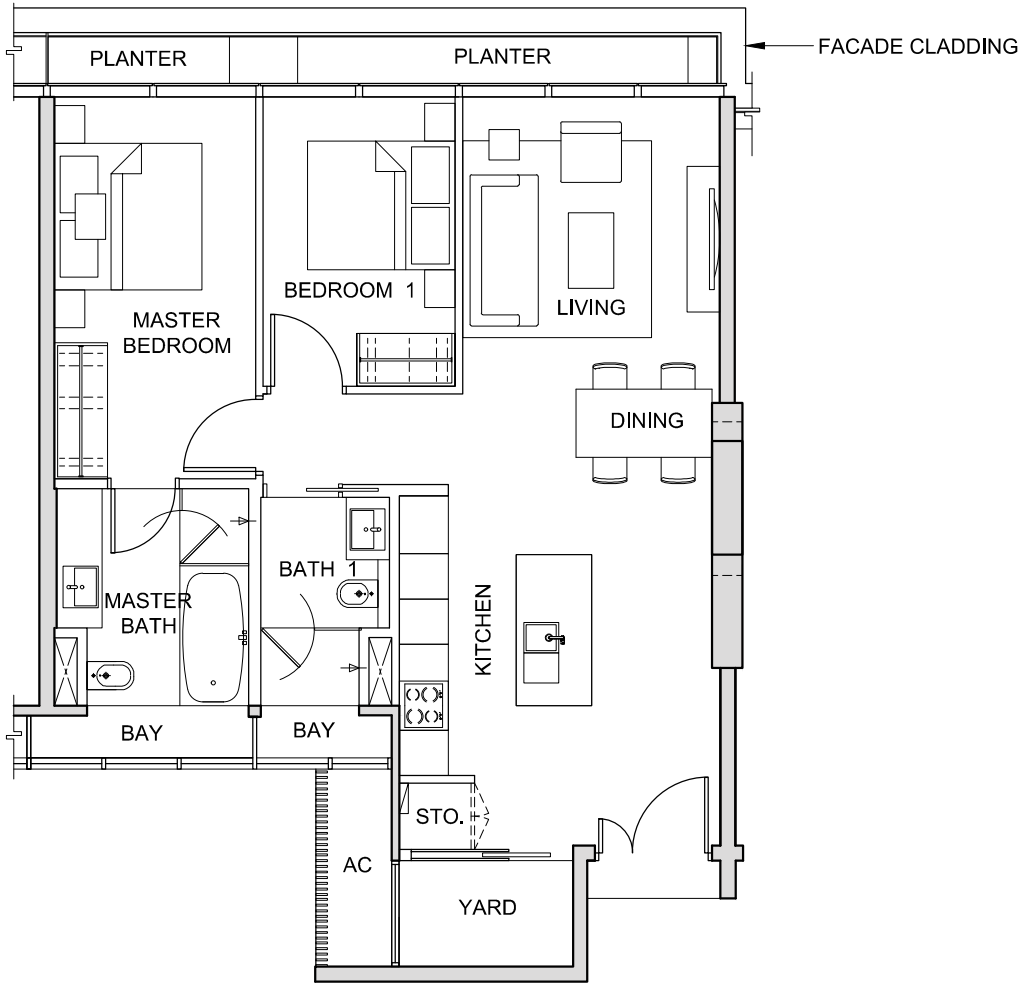
FOR LEVEL 40

The above plans and illustrations are subject to change as may be required or approved by the relevant authorities. All measurements are estimates only and are subject to final survey.

TYPE 2K6

2-BEDROOM  
(101 sq m / 1,087 sq ft)

#41-02



NOT TO SCALE



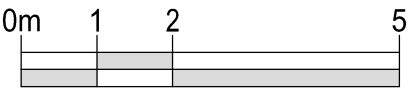
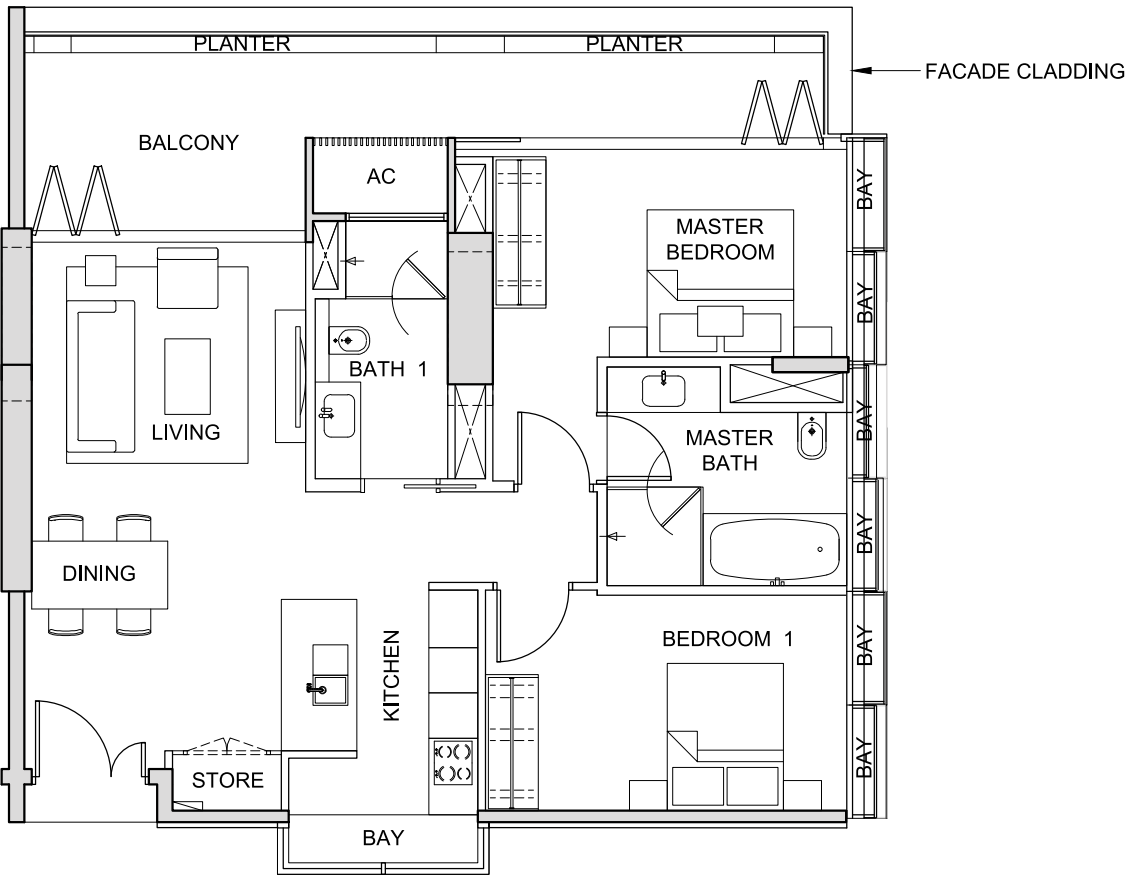
FOR LEVEL 41

The above plans and illustrations are subject to change as may be required or approved by the relevant authorities. All measurements are estimates only and are subject to final survey.

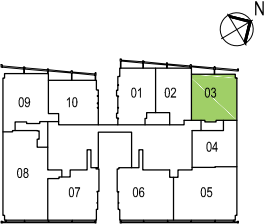
TYPE 2L1

2-BEDROOM  
(119 sq m / 1,281 sq ft)

#36-03



NOT TO SCALE



FOR LEVEL 36

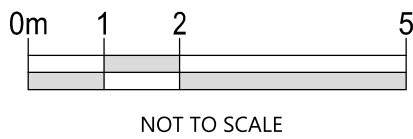
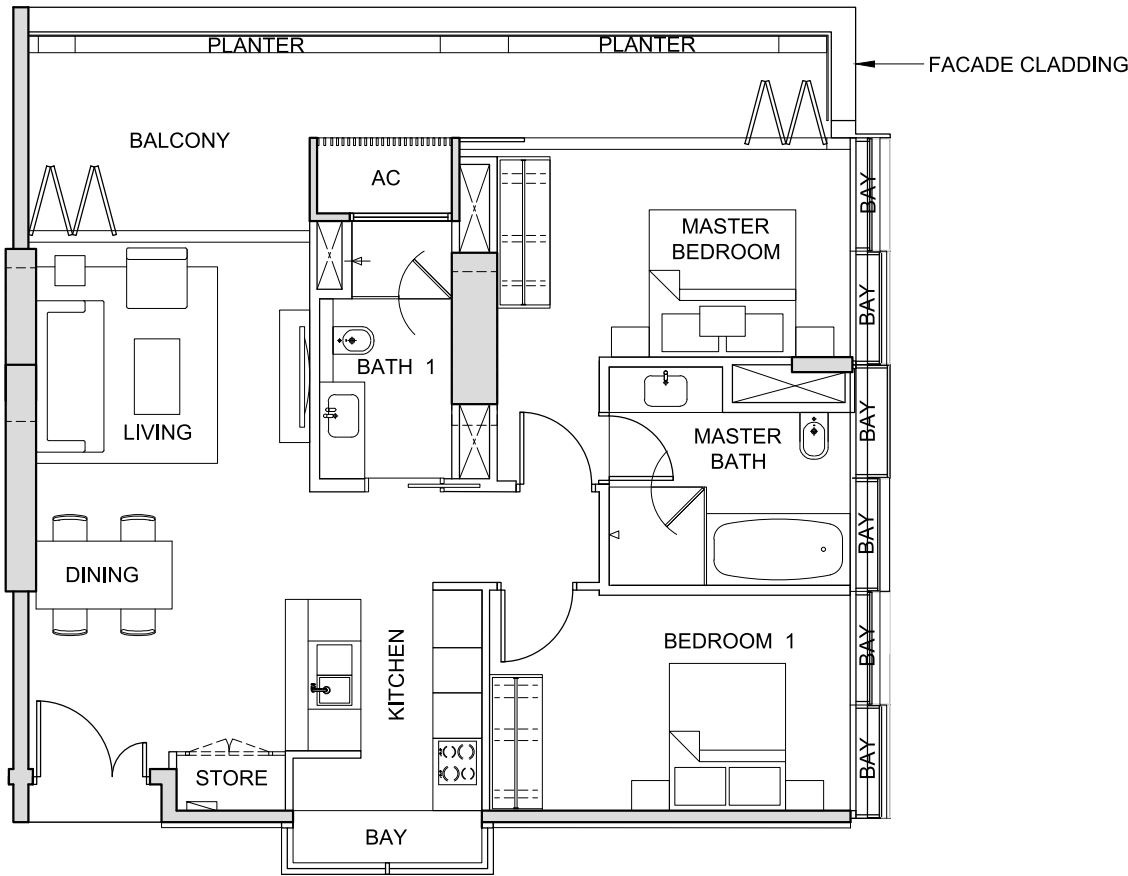
The above plans and illustrations are subject to change as may be required or approved by the relevant authorities. All measurements are estimates only and are subject to final survey.



TYPE 2L2

2-BEDROOM  
(119 sq m / 1,281 sq ft)

#37-03

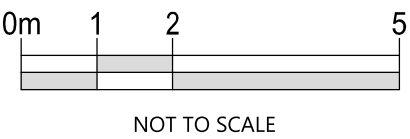
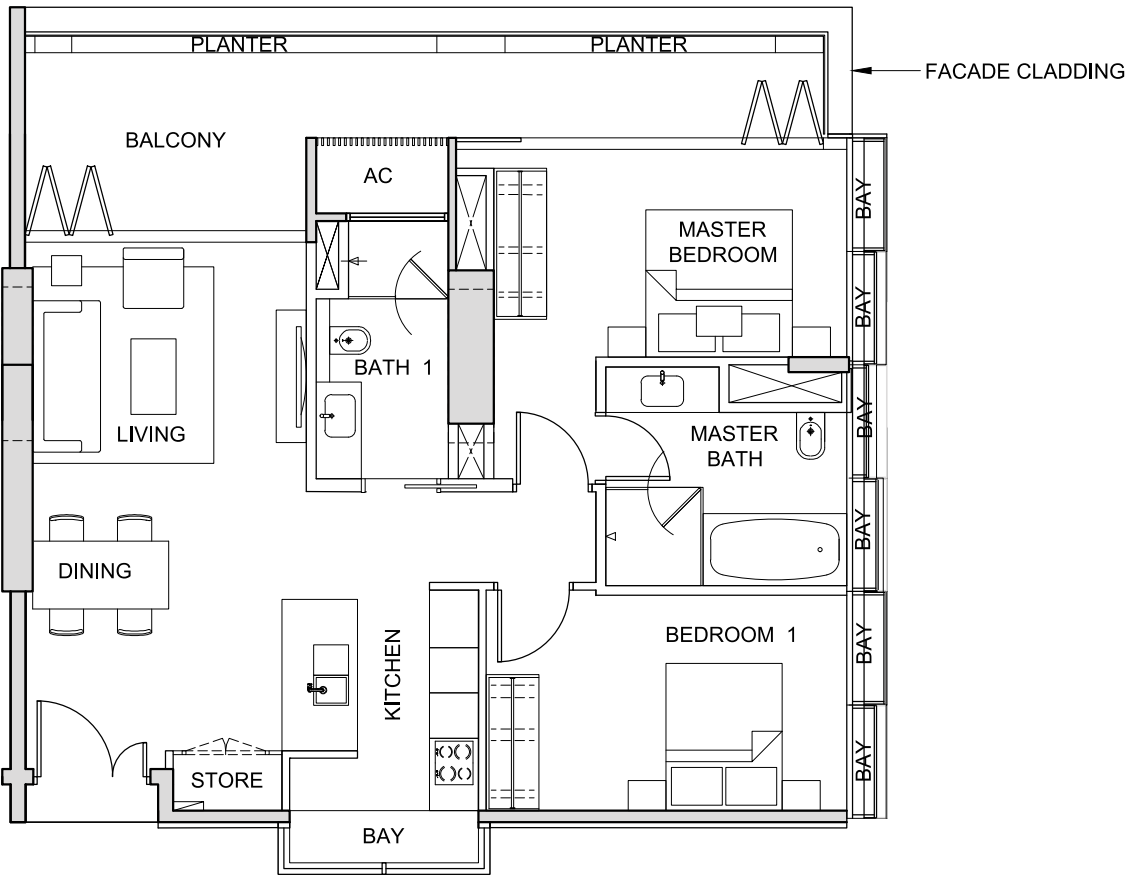


The above plans and illustrations are subject to change as may be required or approved by the relevant authorities. All measurements are estimates only and are subject to final survey.

TYPE 2L3

2-BEDROOM  
(119 sq m / 1,281 sq ft)

#38-03

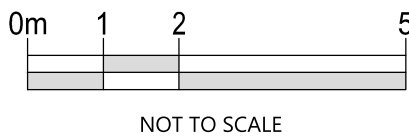
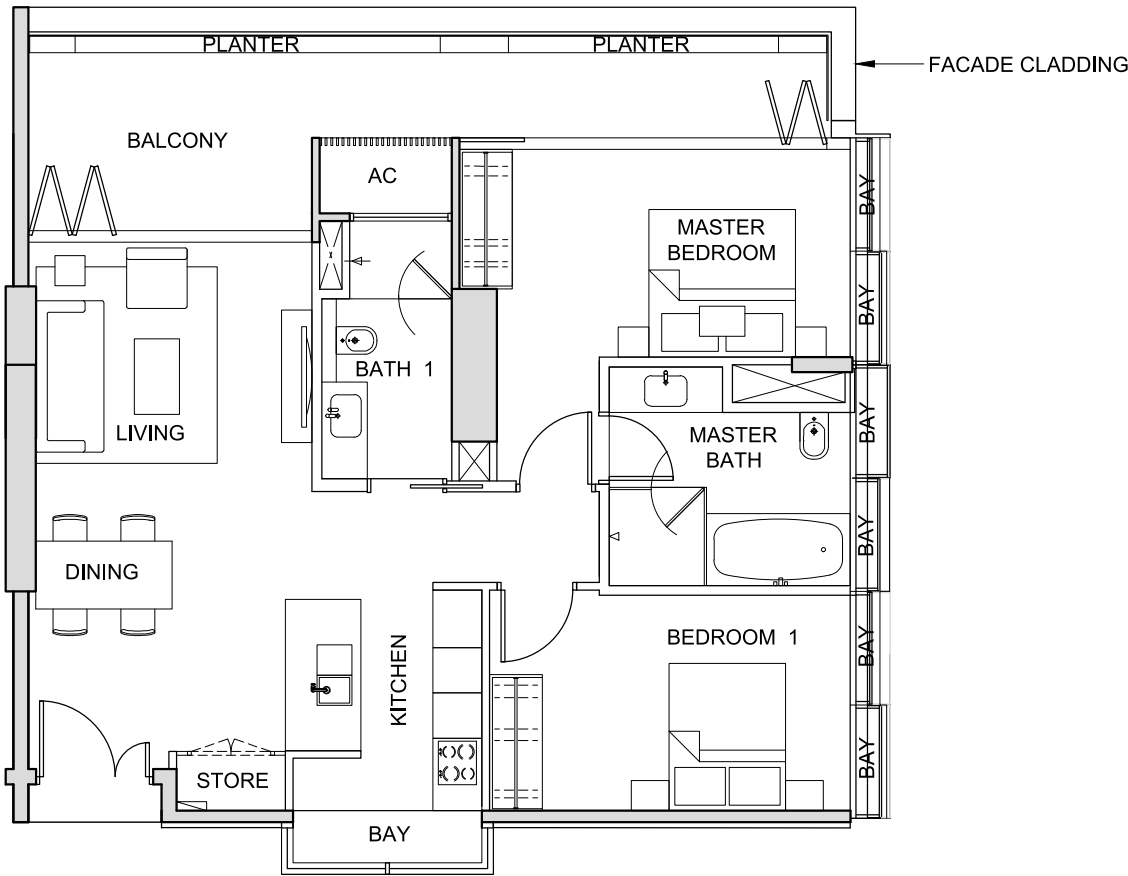


The above plans and illustrations are subject to change as may be required or approved by the relevant authorities. All measurements are estimates only and are subject to final survey.

TYPE 2L4

2-BEDROOM  
(120 sq m / 1,292 sq ft)

#39-03



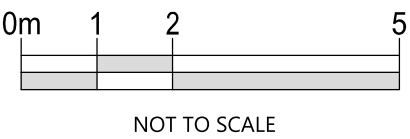
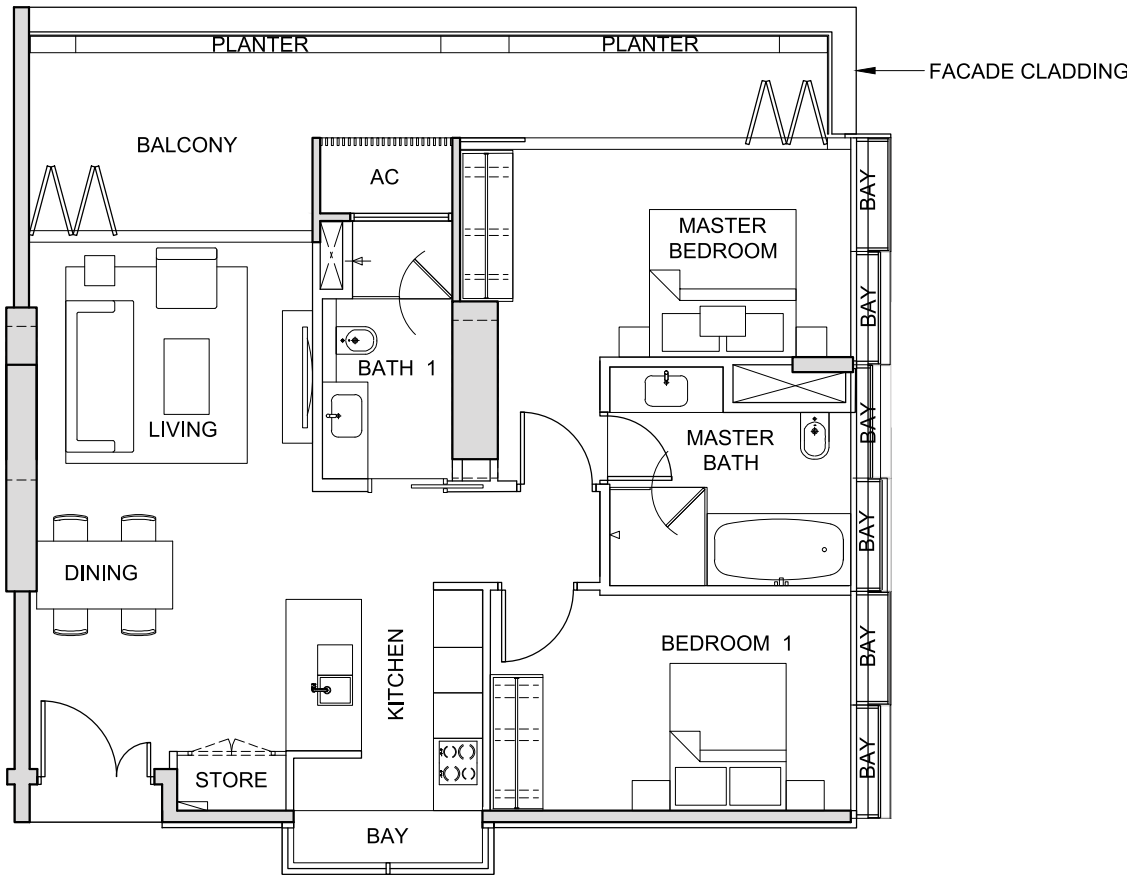
FOR LEVEL 39

The above plans and illustrations are subject to change as may be required or approved by the relevant authorities. All measurements are estimates only and are subject to final survey.

TYPE 2L5

2-BEDROOM  
(120 sq m / 1,292 sq ft)

#40-03



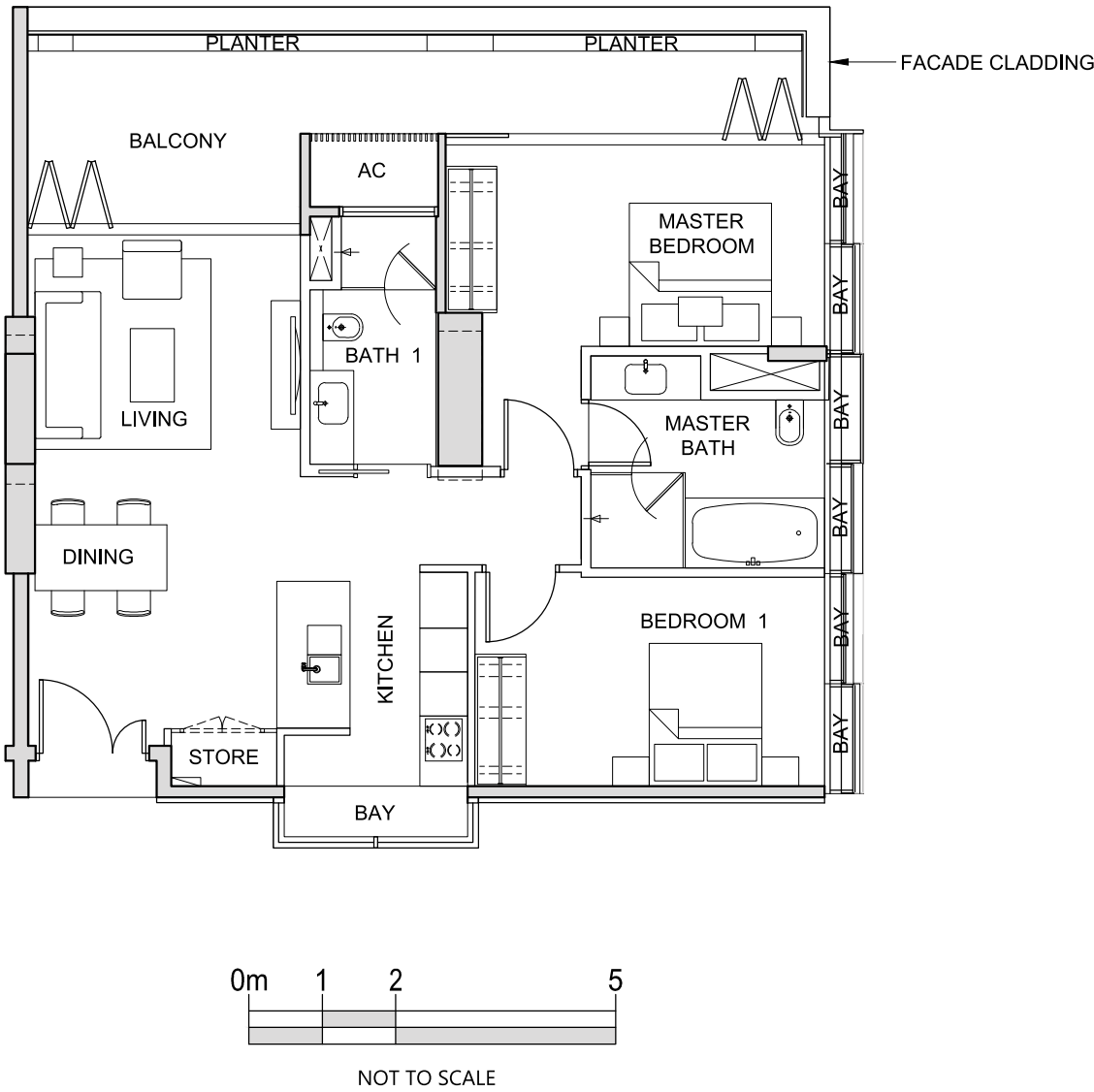
FOR LEVEL 40

The above plans and illustrations are subject to change as may be required or approved by the relevant authorities. All measurements are estimates only and are subject to final survey.

TYPE 2L6

2-BEDROOM  
(120 sq m / 1,292 sq ft)

#41-03

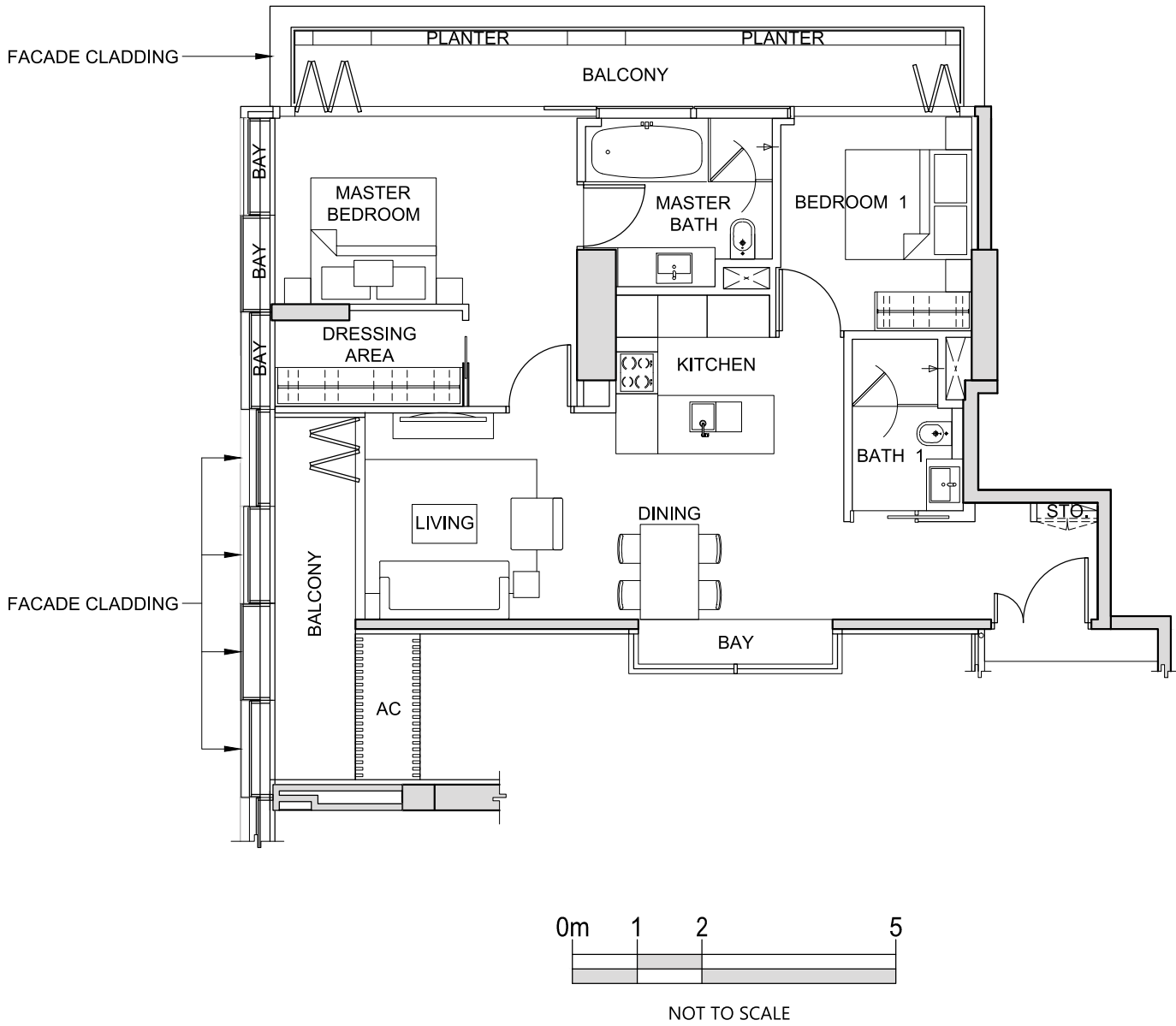


The above plans and illustrations are subject to change as may be required or approved by the relevant authorities. All measurements are estimates only and are subject to final survey.

TYPE 2M1

2-BEDROOM  
(119 sq m / 1,281 sq ft)

#39-09



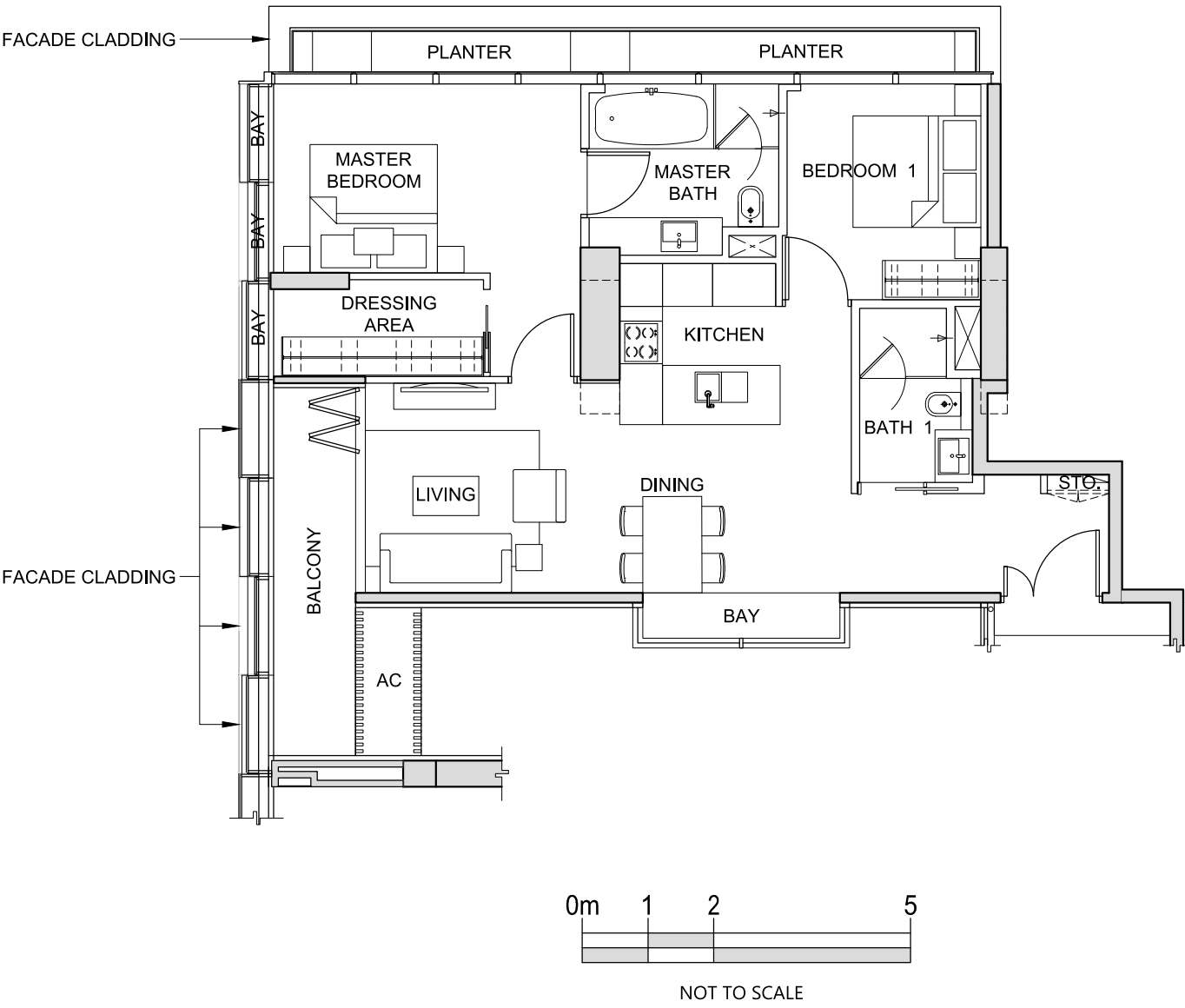
The above plans and illustrations are subject to change as may be required or approved by the relevant authorities. All measurements are estimates only and are subject to final survey.



TYPE 2M2

2-BEDROOM  
(113 sq m / 1,216 sq ft)

#40-09

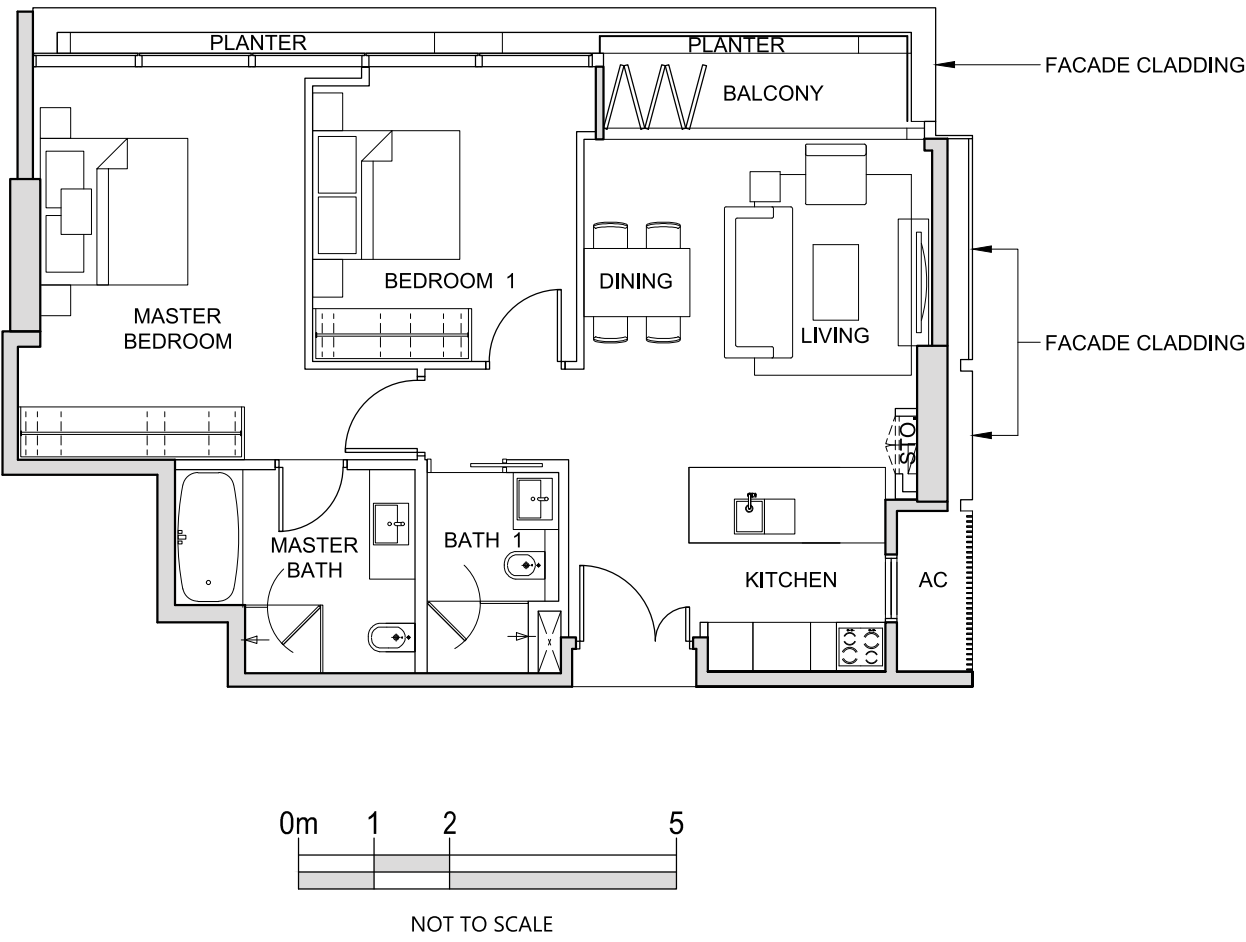


The above plans and illustrations are subject to change as may be required or approved by the relevant authorities. All measurements are estimates only and are subject to final survey.

TYPE 2N1

2-BEDROOM  
(100 sq m / 1,076 sq ft)

#39-10

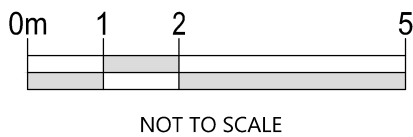
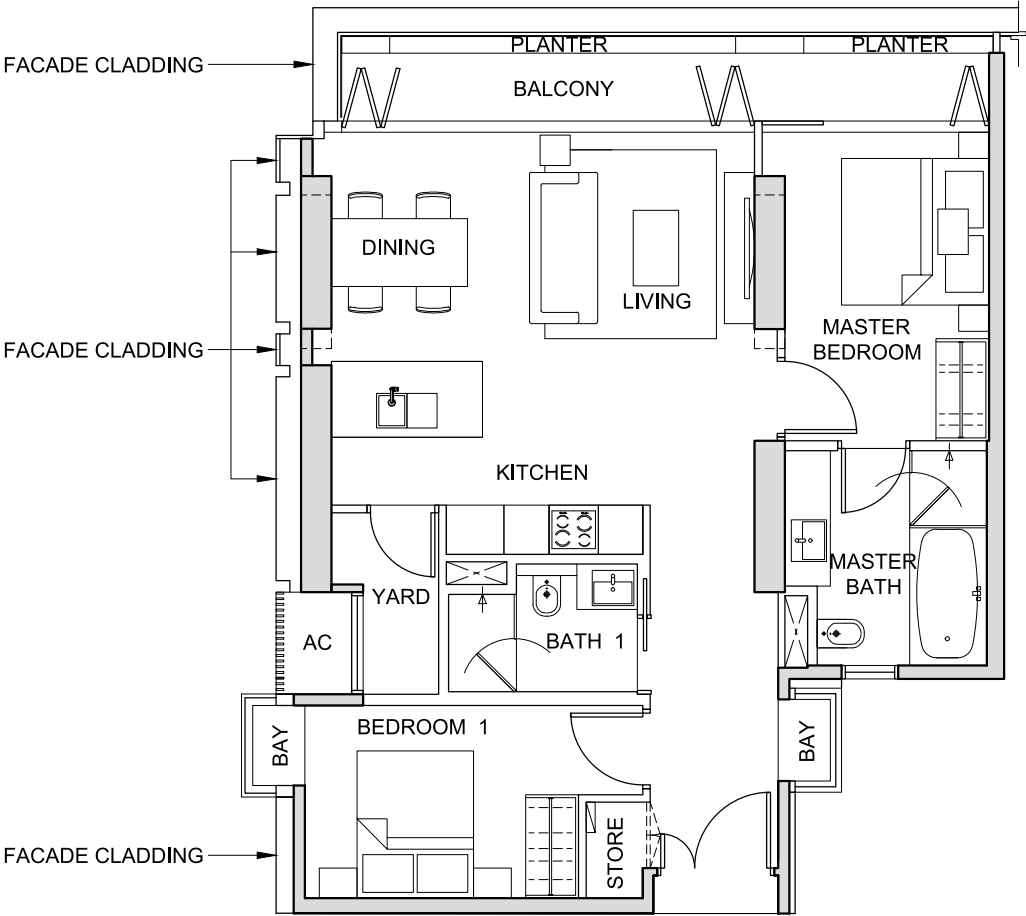


The above plans and illustrations are subject to change as may be required or approved by the relevant authorities. All measurements are estimates only and are subject to final survey.

TYPE 2P1

2-BEDROOM  
(99 sq m / 1,066 sq ft)

#42-01



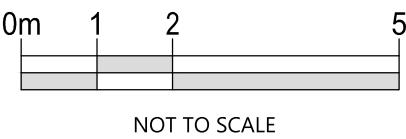
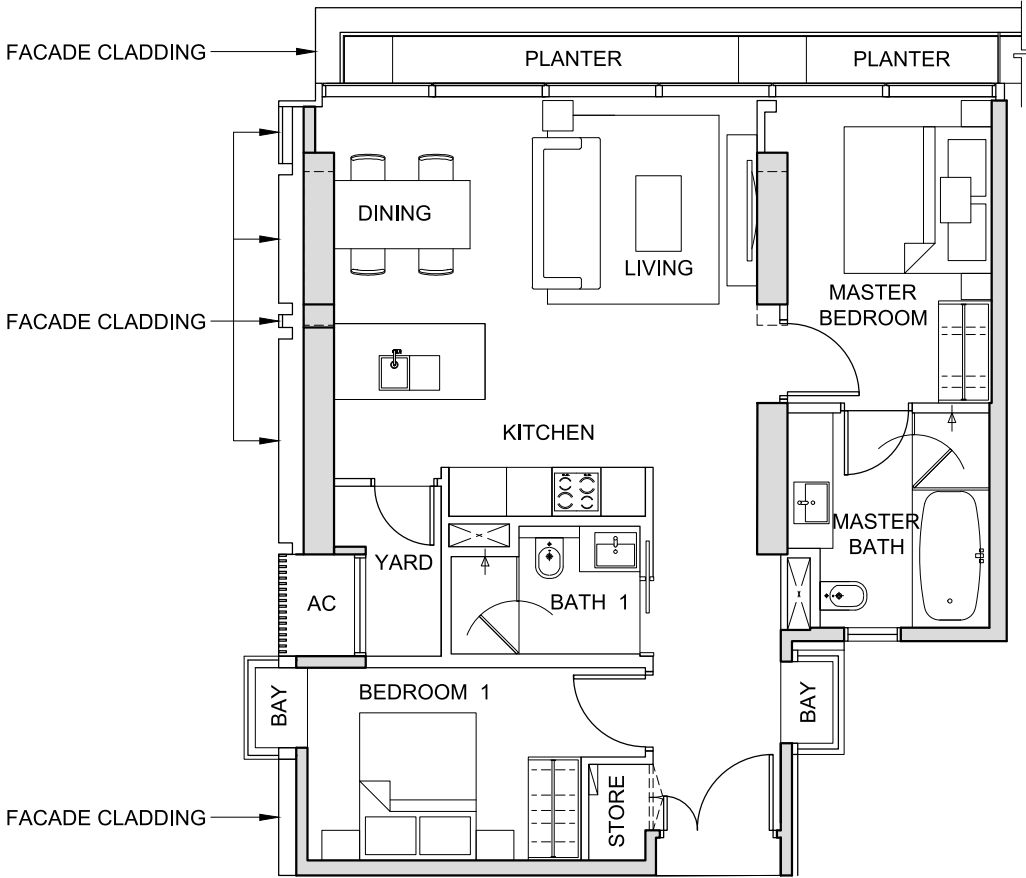
FOR LEVEL 42

The above plans and illustrations are subject to change as may be required or approved by the relevant authorities. All measurements are estimates only and are subject to final survey.

TYPE 2P2

2-BEDROOM  
(95 sq m / 1,023 sq ft)

#43-01



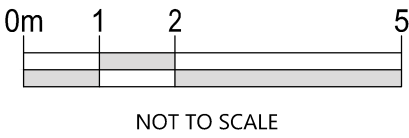
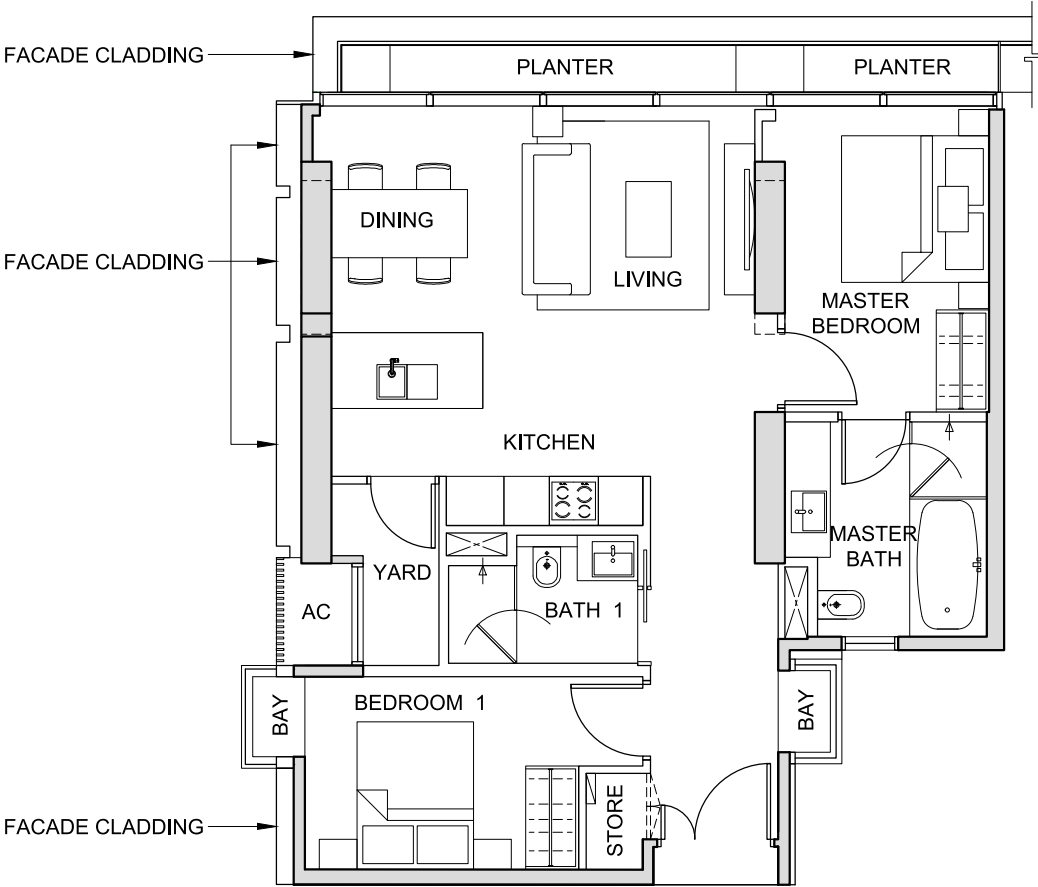
FOR LEVEL 43

The above plans and illustrations are subject to change as may be required or approved by the relevant authorities. All measurements are estimates only and are subject to final survey.

TYPE 2P3

2-BEDROOM  
(95 sq m / 1,023 sq ft)

#44-01

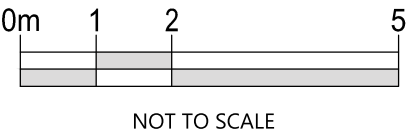
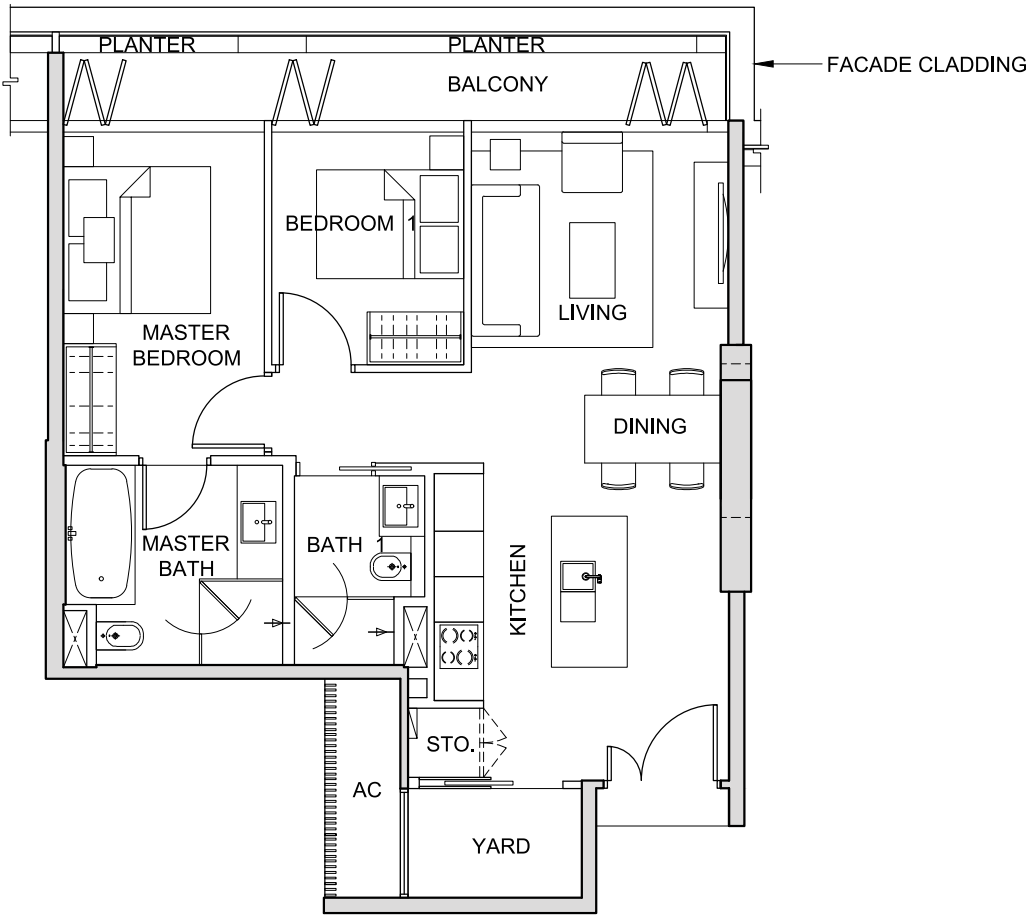


The above plans and illustrations are subject to change as may be required or approved by the relevant authorities. All measurements are estimates only and are subject to final survey.

TYPE 2Q1

2-BEDROOM  
(91 sq m / 980 sq ft)

#42-02



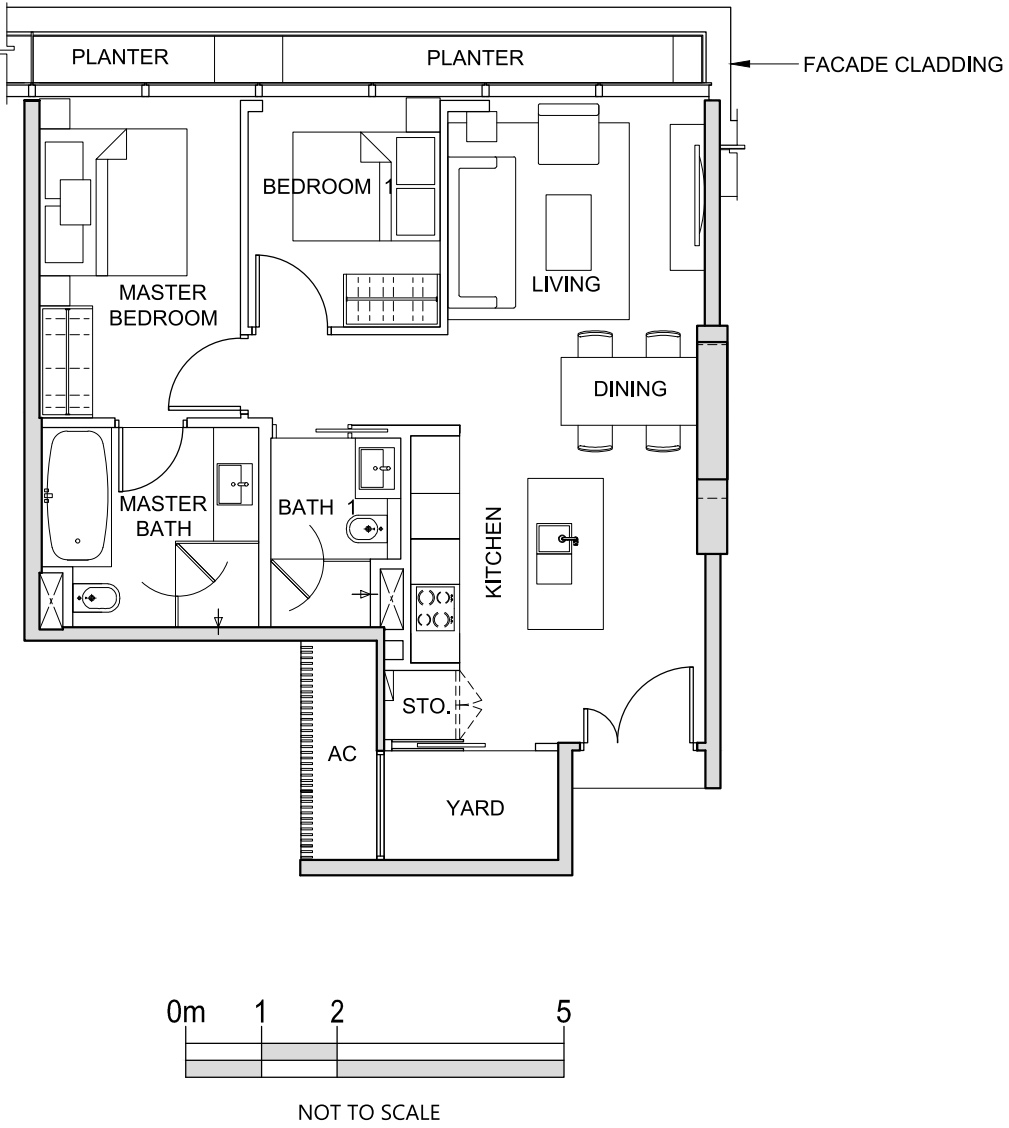
The above plans and illustrations are subject to change as may be required or approved by the relevant authorities. All measurements are estimates only and are subject to final survey.



TYPE 2Q2

2-BEDROOM  
(87 sq m / 936 sq ft)

#43-02

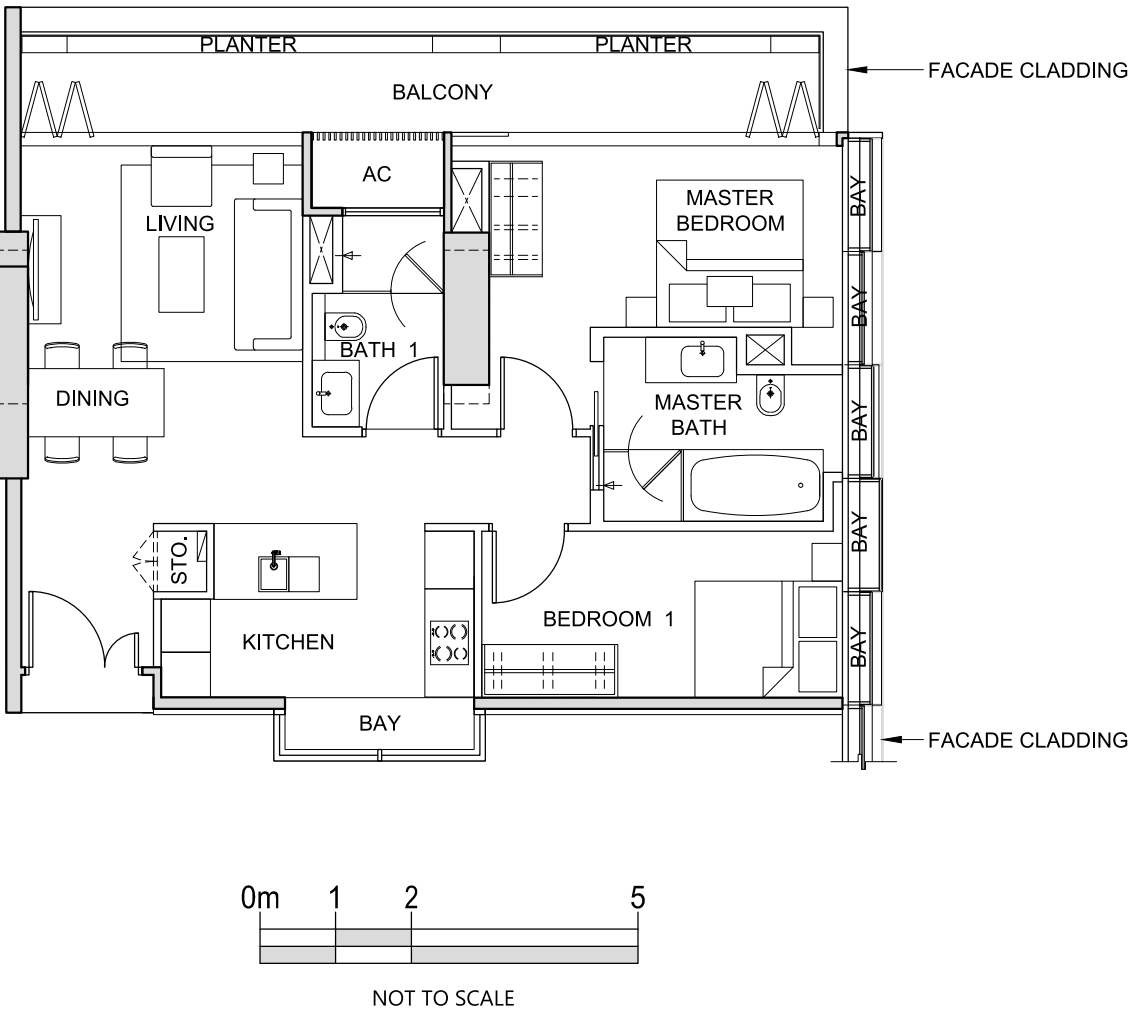


The above plans and illustrations are subject to change as may be required or approved by the relevant authorities. All measurements are estimates only and are subject to final survey.

TYPE 2R1

2-BEDROOM  
(103 sq m / 1,109 sq ft)

#42-03

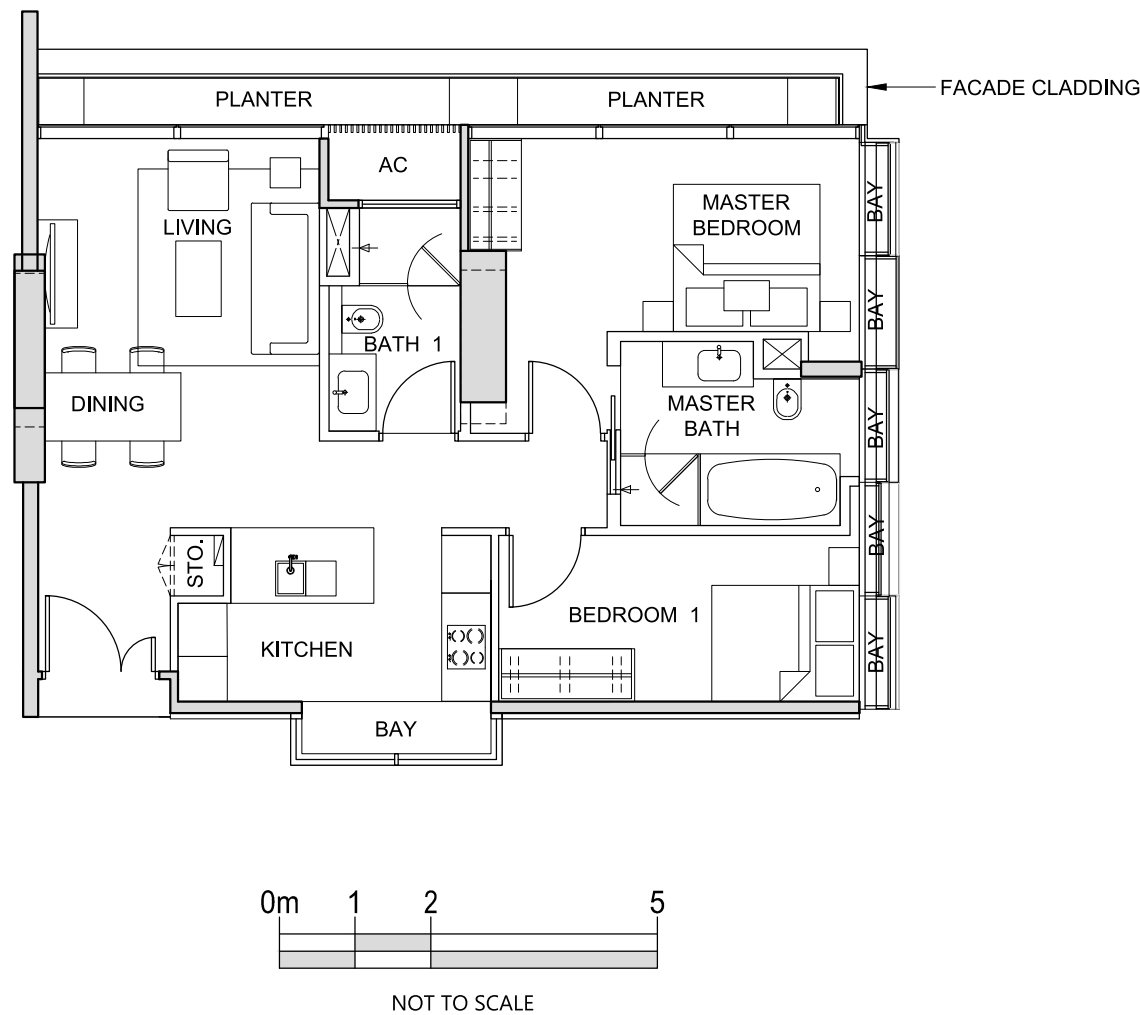


The above plans and illustrations are subject to change as may be required or approved by the relevant authorities. All measurements are estimates only and are subject to final survey.

TYPE 2R2

2-BEDROOM  
(98 sq m / 1,055 sq ft)

#43-03

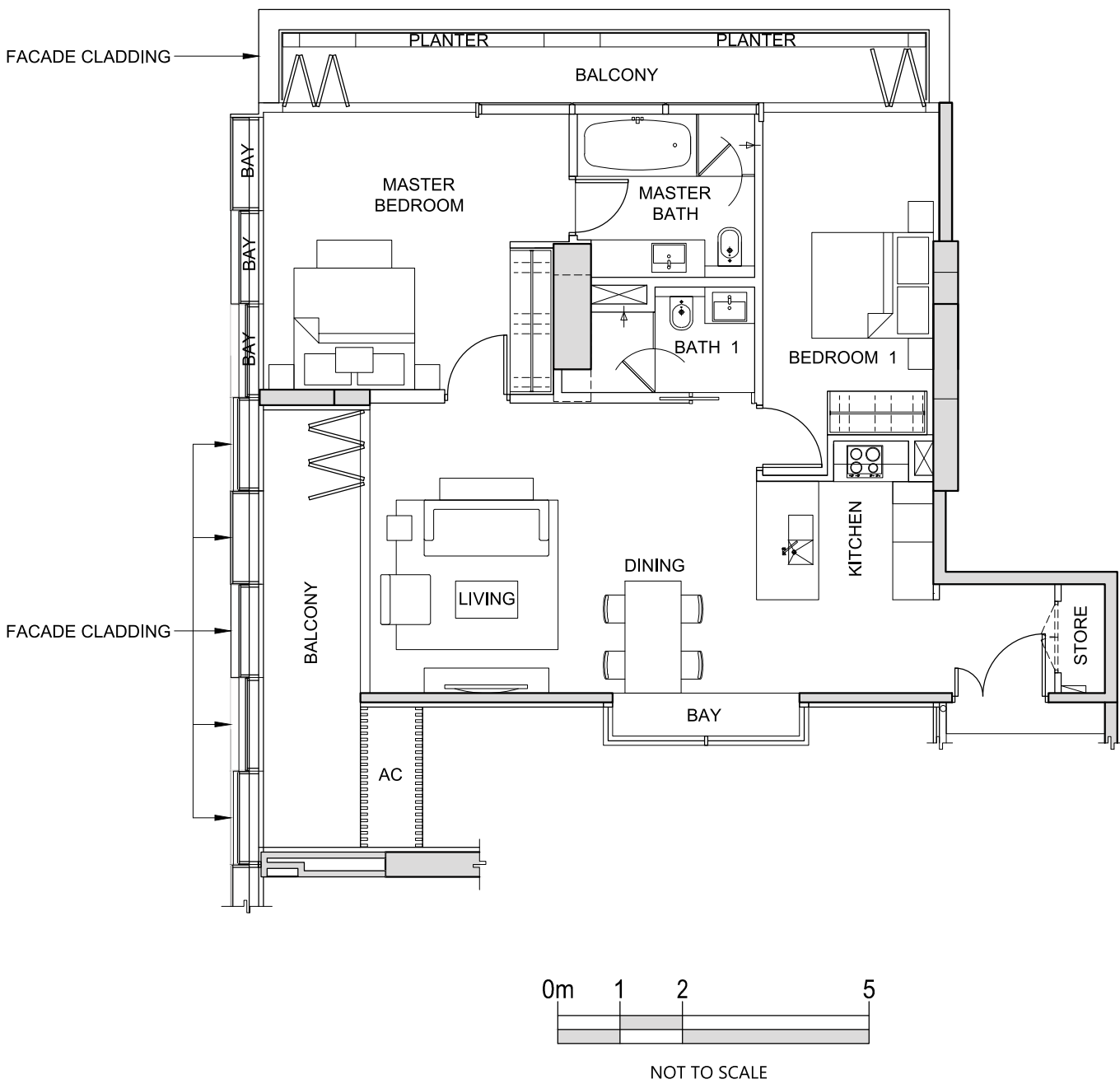


The above plans and illustrations are subject to change as may be required or approved by the relevant authorities. All measurements are estimates only and are subject to final survey.

TYPE 2S1

2-BEDROOM  
(139 sq m / 1,496 sq ft)

#36-09

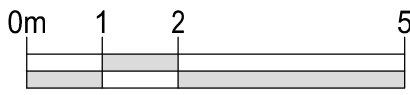
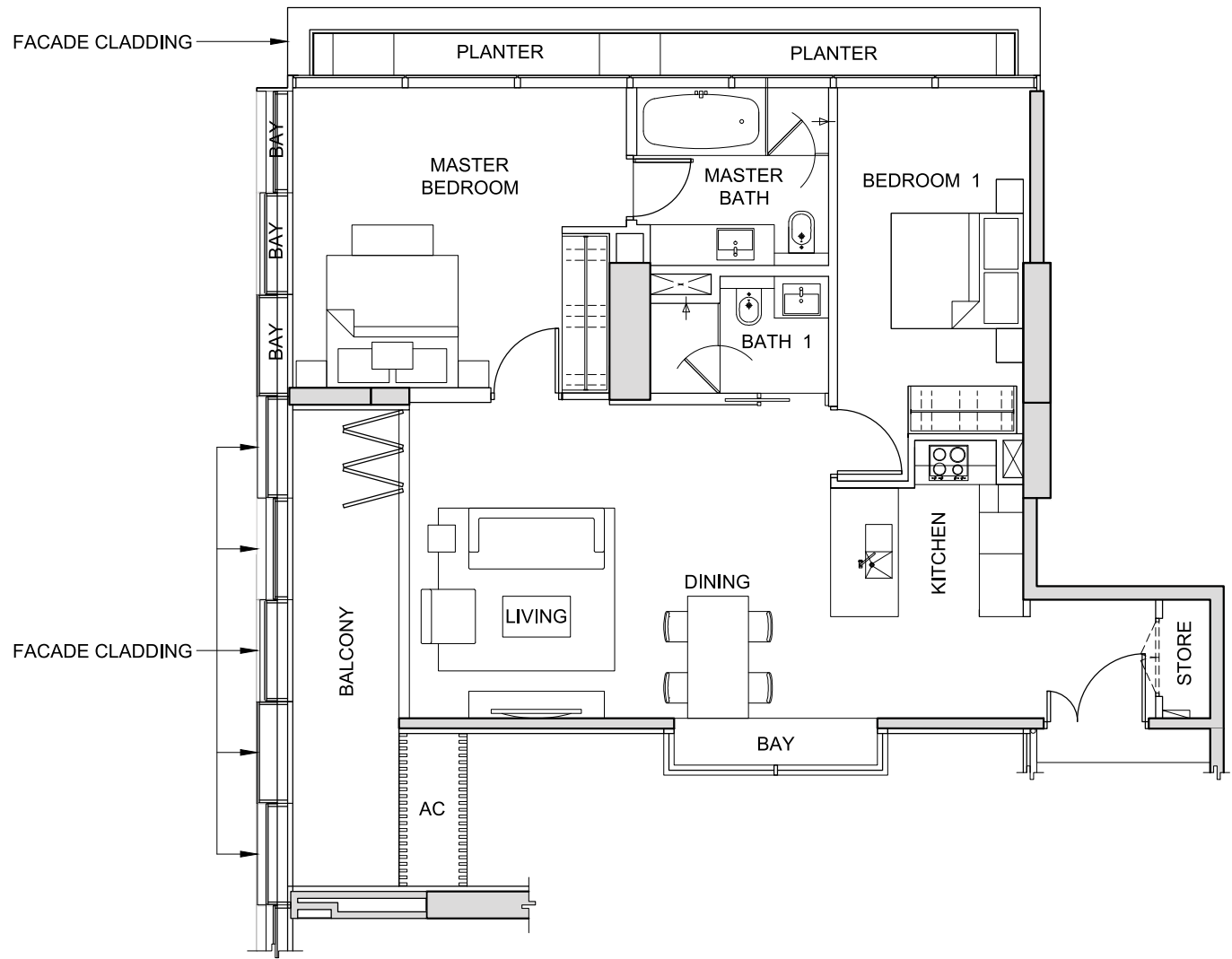


The above plans and illustrations are subject to change as may be required or approved by the relevant authorities. All measurements are estimates only and are subject to final survey.

TYPE 2S2

2-BEDROOM  
(134 sq m / 1,442 sq ft)

#37-09



NOT TO SCALE



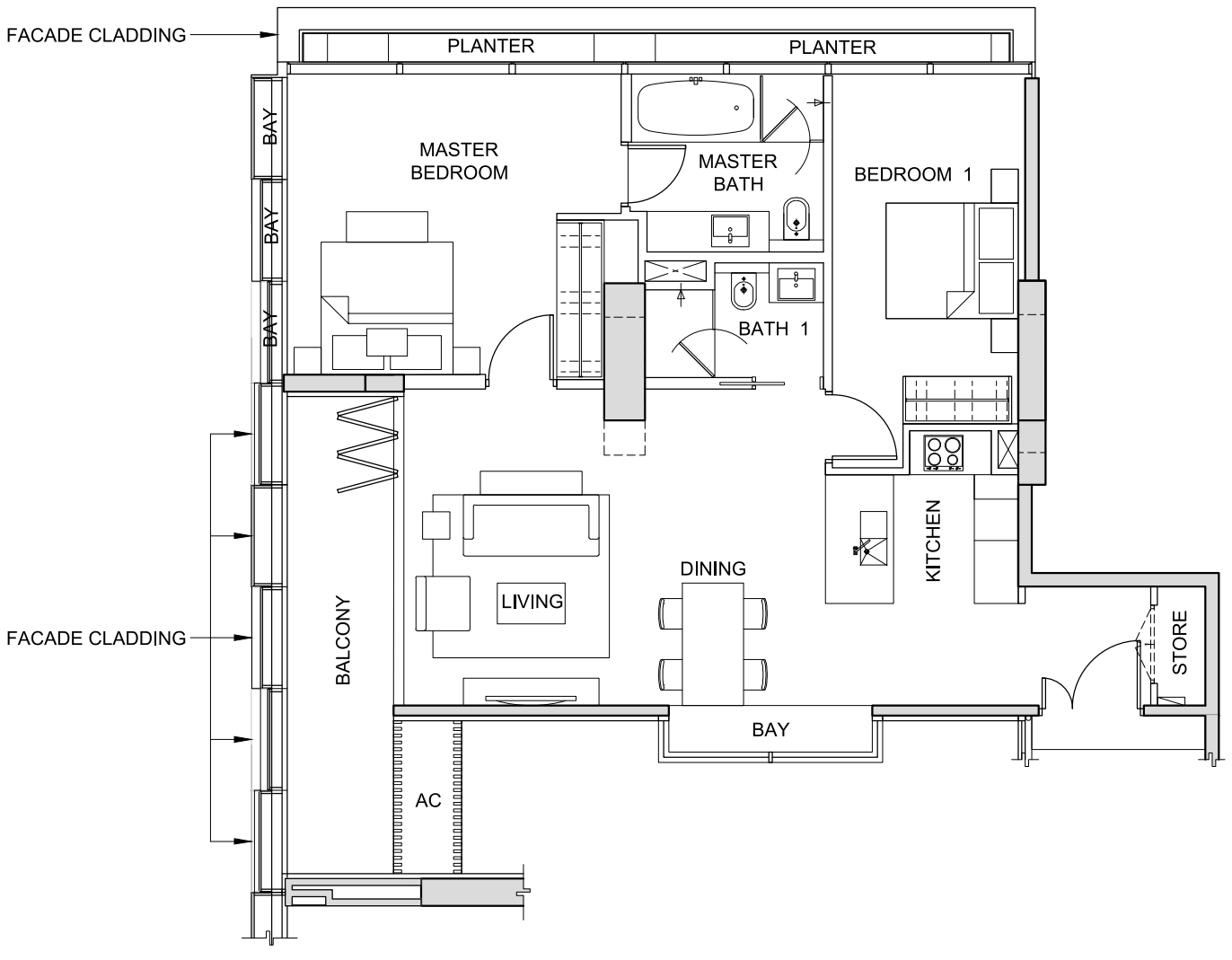
FOR LEVEL 37

The above plans and illustrations are subject to change as may be required or approved by the relevant authorities. All measurements are estimates only and are subject to final survey.

TYPE 2S3

2-BEDROOM  
(132 sq m / 1,421 sq ft)

#38-09



NOT TO SCALE



FOR LEVEL 38

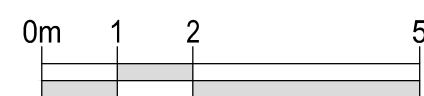
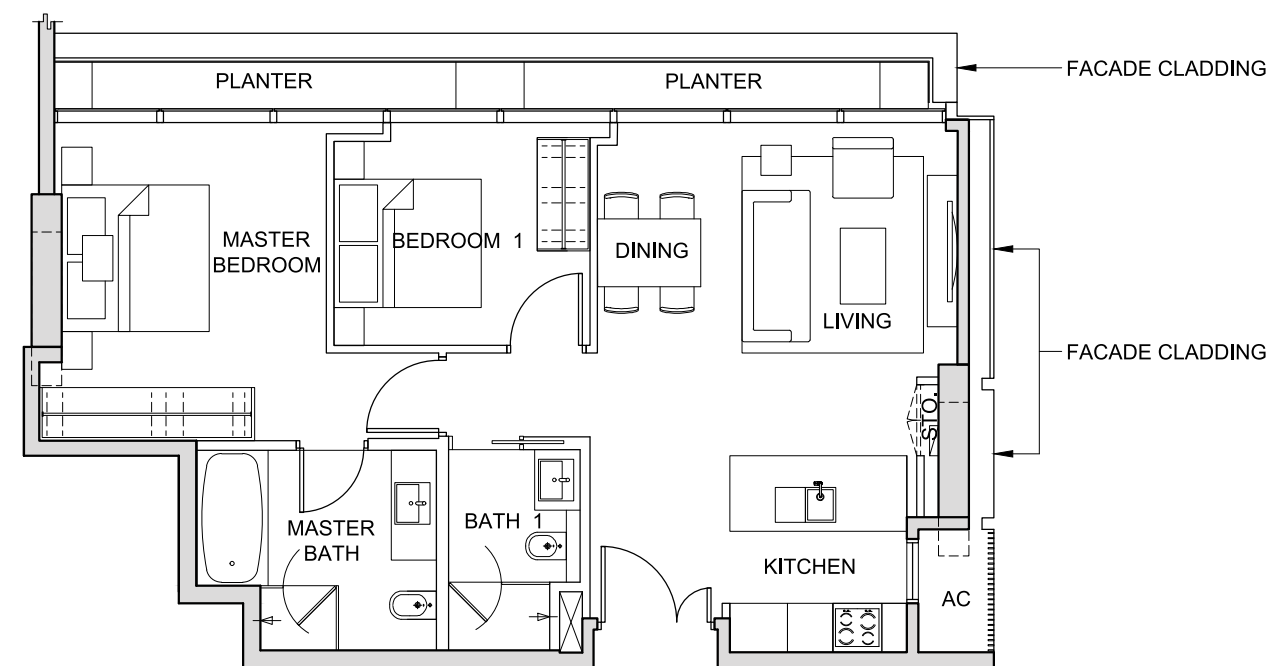
The above plans and illustrations are subject to change as may be required or approved by the relevant authorities. All measurements are estimates only and are subject to final survey.



# TYPE 2T1

2-BEDROOM  
(92 sq m / 990 sq ft)

#40-10



NOT TO SCALE



The above plans and illustrations are subject to change as may be required or approved by the relevant authorities. All measurements are estimates only and are subject to final survey.

JOINTLY DEVELOPED BY



SINGAPORE'S  
TRUSTED PROPERTY  
PIONEER  
SINCE 1963



**IOI PROPERTIES**

MALAYSIA'S  
LEADING  
PROPERTY  
DEVELOPER

FOR THE PLEASURE  
OF OWNERSHIP,  
PLEASE CONTACT  
SOUTH BEACH CONSORTIUM PTE LTD

**(65) 6672 5722**  
**(65) 8338 1010**

[www.southbeachresidences-sb.com](http://www.southbeachresidences-sb.com)

[Enquiries-SBR@cdl.com.sg](mailto:Enquiries-SBR@cdl.com.sg)

While every reasonable care has been taken in preparing this plan, neither the Vendor nor its agents will be held responsible for any inaccuracies or omissions. This plan remains subject to any amendments (including such amendments required or approved by the relevant authorities). All statements are believed to be correct but are not to be regarded as statements or representations of fact. All information and specifications are current at the time of going to press and are subject to such changes as may be required by the Vendor. All areas and other measurements are approximate only and subject to final survey, and the Vendor does not warrant the accuracy of any of the measurements shown on this plan. The Vendor shall not be held liable for any claims, losses, expenses or otherwise whatsoever that may be suffered by purchasers as a result of purchasers' reliance on this plan. The Sale Contract embodies all the terms and conditions between the Vendor and the Purchaser and supersedes and cancels in all respects all previous representations, warranties, promises, inducements or statements of intention, whether written or oral made by the Vendor and/or its agents which are not embodied in the Sale Contract.

